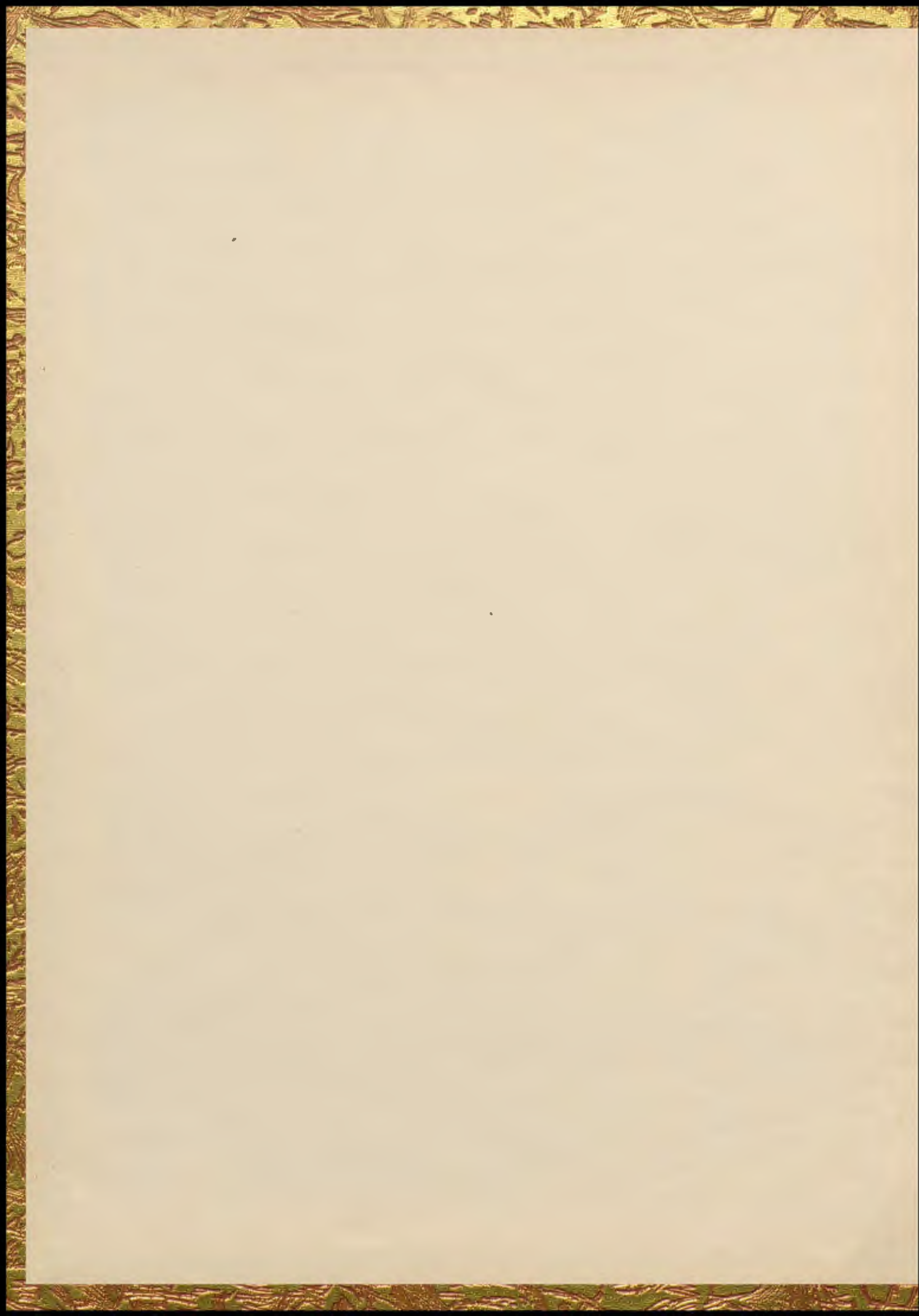
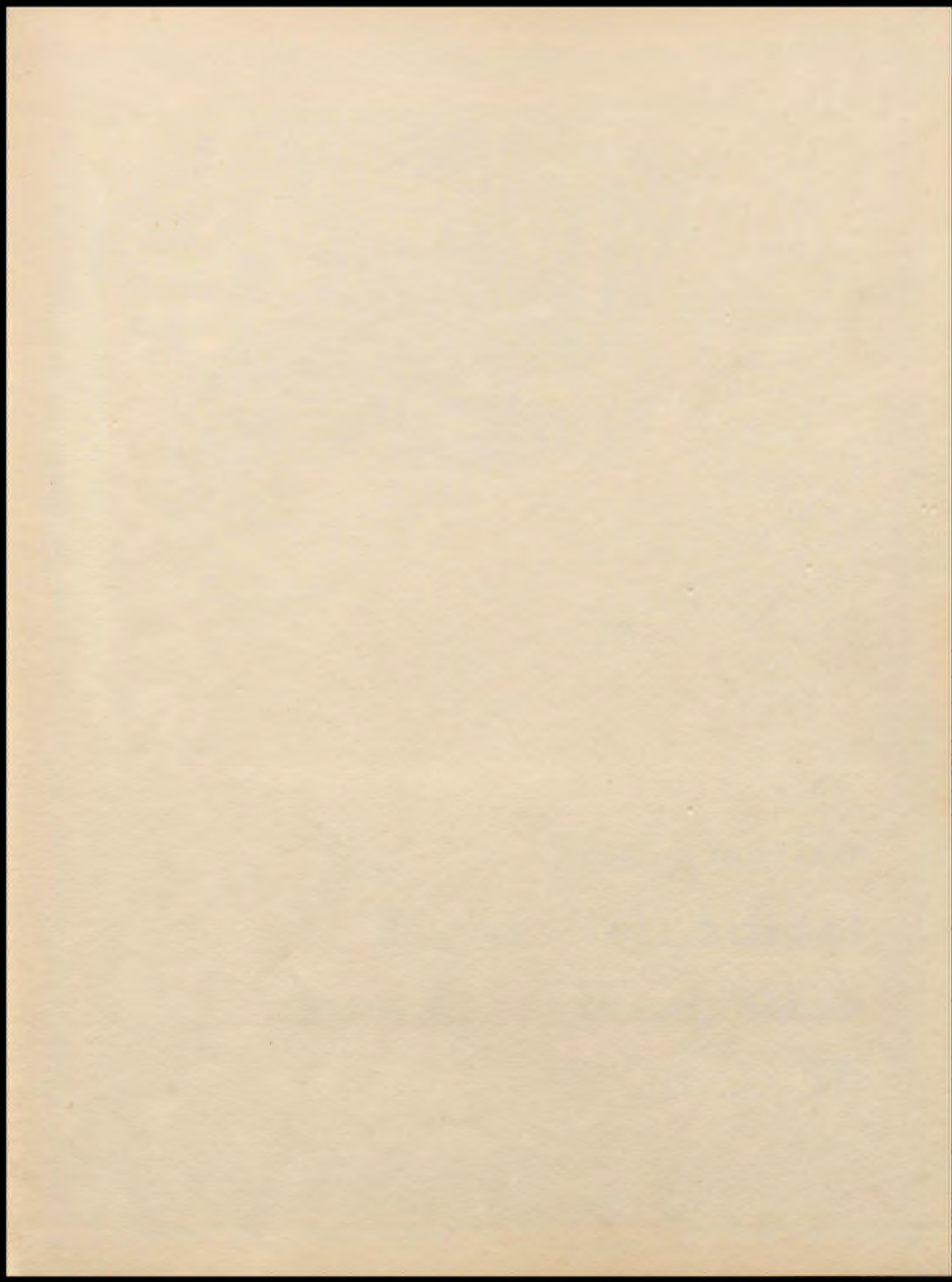


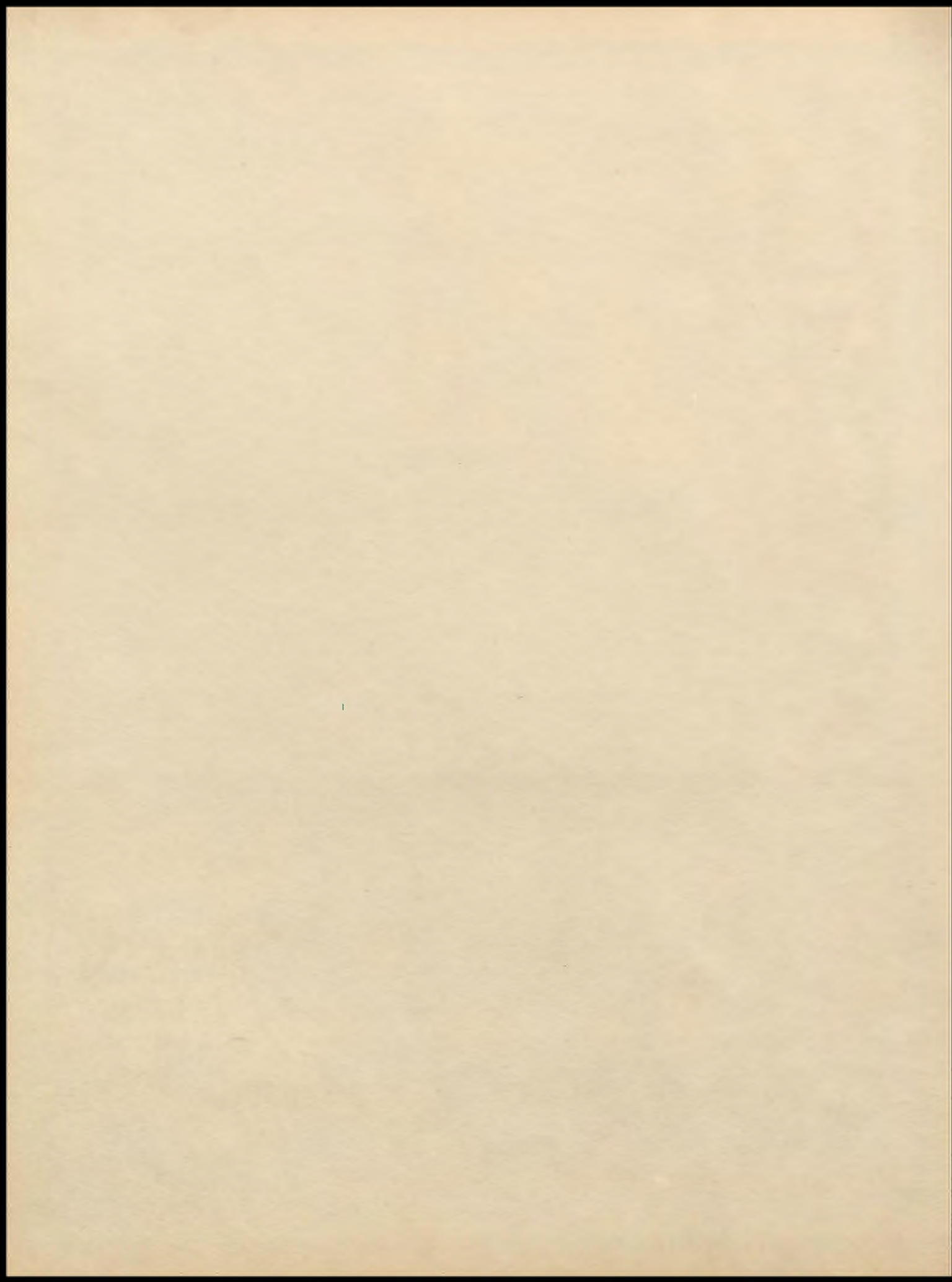
ANNIVERSARY EDITION

SHUTTLE

1903 ▶ 1953









**The Shuttle**  
**Shaw High School**  
**East Cleveland, Ohio**  
**Volume 50**

# IF YOU WERE A STUDENT

1903 — YOU ATTENDED THE OLD SHAW HIGH SCHOOL. (The "old building" had not yet been built.) At the turn of the century, the boys suffered in stiff collars, and dreamed of the day when they would sport a handle-bar mustache. If you were a girl in 1903, you pinned your hair in a pompadour and waited anxiously for the latest issue of "The Godey's Ladies' Book." At Shaw, your eight teachers offered a variety of subjects including Greek and drawing. Your world was rather simple then. The United States had just acquired Cuba, Puerto Rico, and the Philippines as a result of the Spanish-American war, but that didn't bother you much. Neither did the talk about building a canal in some Central-American country called Panama. At Class Day you debated "whether or not labor organizations were detrimental to the interests of the laboring man."

1918 — WORLD WAR I, "THE WAR TO END WARS," was the main thing on your mind in 1918. One hundred and sixty of your former classmates were in the army and more were leaving every day. Your yearbook featured pictures from camps and letters from the boys at Versailles. The world was delirious with joy on November 11th, and you vowed you'd never forget the years before. In the meantime, your 41 teachers kept you busy with subjects like botany and expression. Middies were not required yet, but the girls wore them anyhow because they were in style. The varsity basketball team played in knee socks, while the girls' tennis dresses daringly displayed the legs clear up to the calf. A young man by the name of Ralph A. Brown was assistant principal in your one-building Shaw High.

1923 — YOU LIVED IN A GAY, CAREFREE WORLD IN the Roaring Twenties. You were a Beau Brummel in your striped jacket and straw hat, and of course you were the life of the party with your ukelele. On special occasions you took out your raccoon coat and wowed all the flappers. If you were a girl, you coaxed Mom and Dad for a beaded dress to wear to the Senior Prom. The greatest day in your life was the day you won the Charleston contest. Shaw stadium was built that year, the year in which the tight-lipped Calvin Coolidge became president, and the City Champion football team played such opponents as Astabula Harbor, Detroit Northern, and Canton McKinley. The world was a great big merry-go-round in 1923, and you were swept along with it.



Jack Walsh in

1923

# AT SHAW IN . . .

1935 — IN THE MID-THIRTIES, THE GOLDEN LIGHTS of the past decade had faded and were slowly blinking out. The country was deep in a depression, and you were feeling the effects. Milk was six cents a quart, and you could buy a pound of butter for 18 cents. Instead of federal money, your parents used scrip printed by the county. There was no such thing as an after-school job for you; there wasn't enough work for the adults. Your friends found the same situation and, as a result, there was an unheard of total of 28 extra-curricular activities that kept you busy. If you could have afforded them, suits and coats were selling at \$14.50 to \$19.50, but you wore your old ones instead.

1944 — WORLD WAR II WAS RAGING IN EUROPE AND Asia, and that year 12 boys left Shaw to enlist in the armed forces. You could tell their homes by the blue stars hung in the windows. You were pretty worried about the fellow you knew "somewhere in Europe," and you wondered when he would be home again. You, in school, did your part by buying the war bonds and stamps sold by the National Honor society. You saved old rubber and tin cans, while Mom used ration books, and Dad tried to conserve gasoline. If you were a girl, you wore your hair long and your skirts short. You were learning a new style of dancing called "jitterbug," and you practiced to the tune of "Bell Bottom Trousers."

1953 — IN 1953 YOU WATCHED SHAW'S NEW GYM receive its finishing touches. You saw the varsity basketball team beat Elyria, and you went to the canteen dances after the games. You had a job after school or on Saturdays, and that weekly pay check made you feel pretty independent. Dad let you have the family car over the week-ends, and Mom didn't seem to mind too much — as long as you picked up the dry cleaning. As the time came closer to graduation, you worried about Korea and the draft, and for the first time you realized how small a world it really was. You saw Eisenhower inaugurated as president, and you couldn't help but wonder what the next four years would bring.



Donna Haas in

1903

# And So . . .



*to*  
the student of yesterday;

*to*  
the student of today;



*to*  
the student of tomorrow;





# And Especially . . .



*to*

Ralph A. Brown who has been at Shaw since 1907 teaching us the binomial theorem and the intricacies of quadratic equations, and being a friend as well as instructor.

*to*

all these people we, the staff of the 1953 *Shuttle* dedicate this yearbook.



FACULTY ...  
turn the page



SENIORS ...  
Page 12

# FOR



ACTIVITIES ...  
Page 40



SPORTS ...  
Page 66



UNDERCLASSMEN ...  
Page 92



SENIORS' ACTIVITIES ...  
Page 112

# WORD

IT'S a long way from 1903 to 1953 — fifty years, half a century.

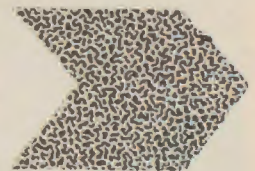
During that time there have been a lot of changes. The automobile grew up; radios found a place in every home; and television was born. Your parents saw two world wars. You saw the last one and maybe we're all seeing the beginning of a third.

In fifty years we haven't stood still either. Shaw has grown from a "little red schoolhouse" to the modern factory of knowledge that it is today.

And the school yearbook, the *Shuttle*, went through its own growing pains, making the transition from a literary magazine to this reflection of school life.

So you see, the years between 1903 and 1953 were ones of progress. The world, the school, and time — they all go . . .

**FORWARD**





Nelson F. Leist, assistant superintendent of schools

To the students:

The golden anniversary of the *Shuttle* finds us in a world which no longer knows the answers. Rigid formulas have broken down; drastic, world-wide changes have created problems which the human intelligence, with its love of order, finds increasingly difficult to solve.

Ancient peoples put their faith in absolutes, fixed axioms, royal decrees, divine revelations. Their youth sat humbly at the feet of their teachers—Wise Men who claimed to know almost everything. The future to them was a Utopia of perfect happiness and complete victory for "their side."

Now, however, we question our wise men's conclusions in the forum, the press, the classroom. Our teachers (even at Shaw!) are discussion leaders rather than infallible authorities; they suggest where to look for truth, what questions to ask, what angles to explore. Slow, progressive betterment of mankind, rather than Utopian paradise for some one race or nation, is seen to be the best hope for the future; we are as universal clay shaped by events that touch all.

To you especially, our youth—more flexible, more buoyant, less set in some pre-formed mold—the world belongs. Shape it as best you can.

Dr. O. J. Korb,  
Superintendent of Schools



To the Graduates:

A modern high school should be a place where ideas, materials, and persons are brought together to achieve a desired goal. Shaw's aim is to enable its students to become increasingly independent, educated and useful citizens, dedicated to maintaining and improving our American way of life.

Your class has made a good start in this direction. You have had experience selecting your officers and planning, organizing, and administering class and school activities. You have learned to work as individuals as well as in groups. Throughout your school experience you have found it necessary to make choices. The school has tried to help you to choose wisely.

The faculty takes pride in the way you have faced the many problems which have confronted you. We congratulate you on your achievements thus far. We know you realize that this is but the beginning, the commencement, of your lives as citizens, with many new responsibilities as well as privileges ahead of you.

As your principal I have enjoyed our association. Working with you has been an experience I shall always treasure. I wish you every success in the years ahead.

Wayne C. Blough,  
Principal



K. Lucille Provo, dean of girls



Robert Cawrse, assistant principal

# 'the powers that be'

Gail Bowden, monitor, shows office secretaries, Mildred Hoge and Jean Schroeder, an official-looking document.





Walter Bandlow  
*Industrial Arts*

Ralph A. Brown  
*Mathematics*

Margaret Campbell  
*English*

Wayne Caroff  
*Mathematics*

Harriet Carpenter  
*Home Economics*

Lois Dean  
*Dramatics*  
Anna Devney  
*Social Studies*  
Albert W. Dolan  
*Science*  
H. P. Frank  
*Science*



S. Robert Fraser  
*Music*  
Bruce Holderbaum  
*Art*  
Howard K. Hunter  
*Mathematics*  
Alice Juringus  
*Physical Education*



Grant Kibbel  
*Science*  
Isabel Latta  
*Languages*  
Robert P. Louis  
*Commercial*  
Robert McGraw  
*Social Studies*

Hubert McNeill  
*Social Studies*  
Jack Moore  
*Industrial Arts*  
Ayleen Morley  
*English*  
Ralph C. Morris  
*Science*



# FACULTY

Mr. Blough samples cookies at the December faculty tea.



Not Pictured  
 Louise Baker — *English*  
 Clara Clendenen — *English*  
 Lois Crank — *English*



William H. Morris  
*Social Studies*  
 Harold Naragon  
*Social Studies*  
 Elizabeth Ort  
*Languages*  
 Mildred Palmer  
*English*

C. Cassil Reynard  
*Languages*  
 Rosemary Schrader  
*Home Economics*  
 Margery Shields  
*Music*  
 Edith Scribner  
*Science*



Anna M. Soutar  
*Commercial*  
 George Todd  
*English*  
 Edgar Vance  
*Commercial*  
 Douglas Vivian  
*Physical Education*



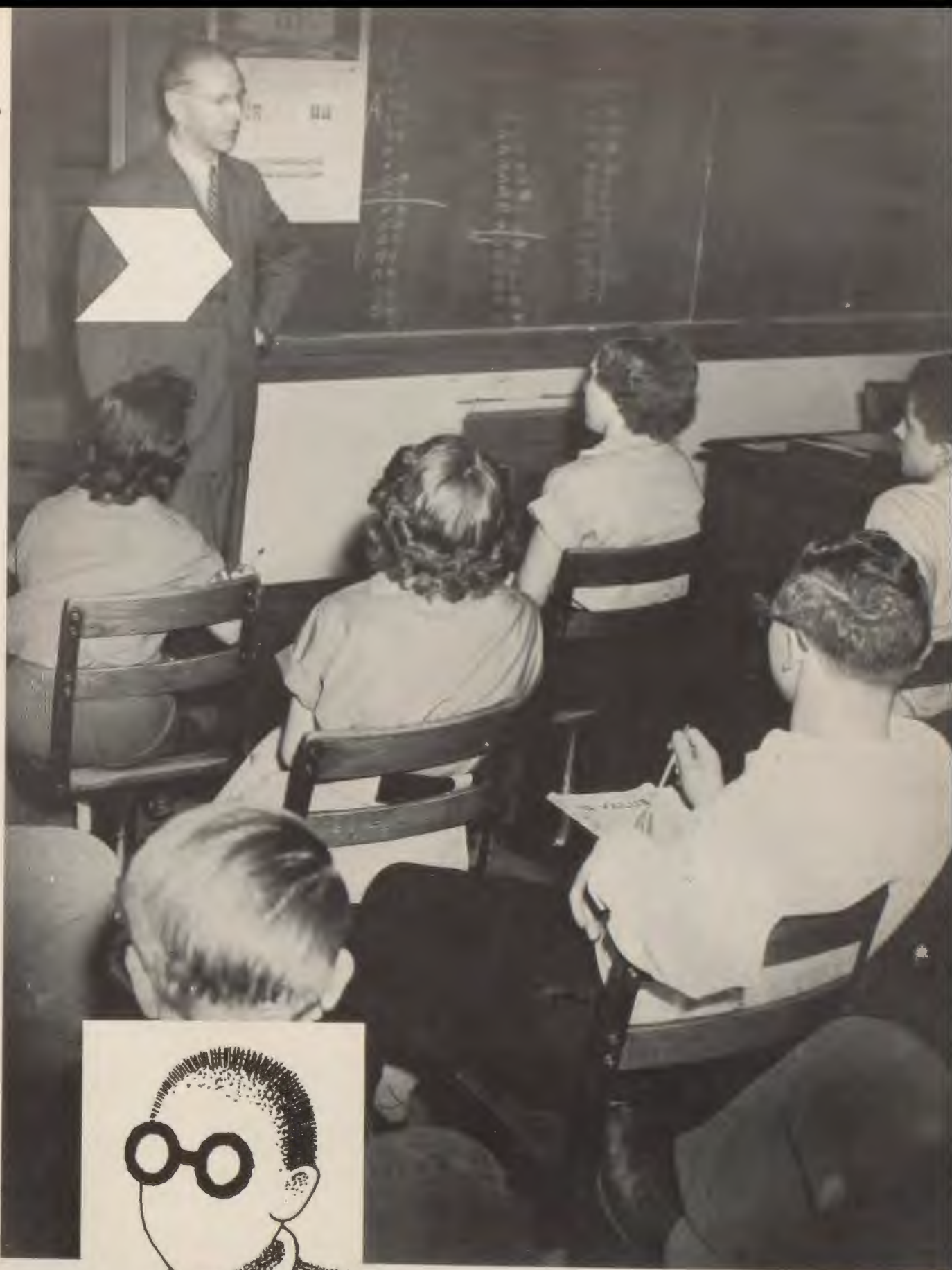
Elizabeth Wenger  
*Commercial*  
 Roy Wisecup  
*Industrial Arts*  
 Helen Wright  
*English*  
 Alice Zuck  
*English*



# SENIORS

THE picture on the next page shows an American government class that has just finished one of Mr. Naragon's tests. The students in it are all seniors. You'll find more of them in this next section. These are the people who survived three years of tests and homework, who finally managed to struggle through "Vanity Fair." These are the fellows and gals who have earned for themselves the cap and gown, the diploma, and after twelve years, the right to be called — a senior.





# CLASS OF JANUARY 1953



Big wheels of the January, '53 class show their Pepsodent smiles. They are Vice-President, Bud Grimm; President, Tom Blanchard; and Secretary-Treasurer, Janet Kathe.

Eighty-nine strong, our class entered Shaw in January 1950 . . . we were full of enthusiasm . . . looking forward to three years at Shaw . . . of course, we were a little bewildered at first (bewitched and bothered too!) . . . but soon we caught on to things . . . became a part of Shaw.

Could we ever forget the assemblies? . . . our first football rally . . . cheering and clapping way up in the balcony . . . football queen assemblies with their skits and jokes . . . National Honor Society installations . . . the tense minutes waiting for the secretary to read the names of the new members . . . the Christmas assemblies . . . Mr. Edgar's adventures in space.

Memories . . . inaugurating Senior Night at the

Lorain game . . . the girls wearing white mums . . . the mid-year play, "Merton of the Movies" . . . the Black-Red Review, first in four years . . . the swim shows . . . "The Blizzard Bugle" . . .

We'll look back on . . . Class Night . . . the speech our president made . . . our class play, "Will the Mail-Train Ride Tonight?" or "Love Saves the Day" . . . our Prom at Park Lane Villa . . . Commencement at Kirk . . . receiving our diplomas.

As for the future . . . we have varied interests . . . engineering . . . secretarial work . . . dramatics . . . medicine . . . members of our class plan to go into these fields and many more . . . but whatever we do . . . we'll never forget those years at Shaw.

Bob Albrecht  
Richard Altemus  
Kathleen Anderson



Tom Babbitt  
Connie Blair  
Roseanne Blakemore



Tom Blanchard	Virginia Brown	John Carlson	Nancy Carlson
Tom Chevako	Patricia Ciomek	Lucy Cirkova	Don Clark



Donna Clark  
 Ed Conway  
 Evelyn Cooper  
 Ervin Davies  
 Claudia Dellinger  
 Jill Denison  
 Frank Dohm



Charles Hagberg  
 Howard Hanna  
 Mark Hannan  
 Carolyn Hay  
 Joan Hershberger  
 Frank Holan  
 Ken Horton





Gene Donaldson  
 Gerald Dougherty  
 James Durkin  
 Kenneth Fetheroff  
 Dolores Fischer  
 Carl Frederick  
 Lauren Frederick



Ronald Froelich  
 David Gascoigne  
 Michael Gay  
 Bud Grimm  
 Tony Giordano  
 Henry Giunta  
 Donna Haas





**Ideal Boy and Girl . . . Friendliness:**

Jack Walsh, Bud Grimm, Janet Sprinkle, and Roseann Blakemore.

Friendliness — n. The temper and disposition of a friend; kindness; favorableness. An appropriate or implied friendship; befit or characteristic of friends.

Harry Johnson

Janet Kathe

Pat Kennedy

Tom Kissack

Georgan Krantz

Mark Kravitz

George Krezewinski

Warren Ledger



Rita Lorenzetti  
Joyce MacKenzie  
Nancy Marrone



Isabel Mason  
Burton Maxim  
Phyllis McCarter

Barbara  
McKnight

Betty  
McMasters

Jack  
Mentel

Fred  
Mueller

Robert  
Myers

Jim  
Noble

Harry  
Palmer

Catherine  
Peters





Louise Pinaro  
Helen Reid

Edwin Roth  
Roger Rowe



Ronald Sapatka  
Louis Schmidt



George Schultz  
Jack Schuster



Dolores Schwimmer  
Dennis Smith

JANUARY PROM COMMITTEE

Tom Blanchard  
Bud Grimm  
Janet Kathe  
Ed Roth



1953 CLASS RING

JUNE PROM COMMITTEE

George Dostal  
Phyllis Friedman  
Floyd Kregenow  
Bonnie McCutcheon  
Barbara Postle  
Alan Singerman





Jean Sojeba  
Charles Solomon



Don Sopko  
Doris Thompson



Carol Vitale  
Robert Wagner



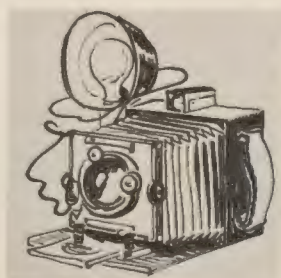
Myra Walker  
Joel Weil



Sally Williams  
Anne Wills



Class of January, 1953  
Sheldon Apple  
Ray Lamcha



Class of June, 1953  
John Horkan  
Shirley Lytle  
Bob Ptak

NOT PICTURED

# CLASS OF JUNE 1953



June class officers worry about post-graduation troubles. They are President, Floyd Kregenow; Vice-President, Alan Singerman; and Secretary-Treasurer, Barb Postle.

Pre-Shaw Day, September, 1950 . . . our class of 217 was introduced to Shaw . . . remember when we were 10B's? . . . worried about tunnels . . . teachers . . . tests . . . the next year, as juniors, we were self-confident . . . knew the ropes.

New horizons were explored during our high school years . . . fungi . . . French . . . hydrochloric . . . history . . . Milton . . . math . . . new ideas . . . new thoughts.

Changes occurred while we were here . . . the longer periods . . . representatives-at-large in the Student Council . . . the five column Observer returned . . . Mr. Cawrse became Dean of Boys . . . the long-awaited gym opened.

During our three years at Shaw we said . . . George

. . . it's for the squad . . . groovy . . . there's a fungus among us . . . "It's in the Book."

As seniors we planned for the future . . . college for some . . . we suffered through the Ohio State Scholarship test . . . learned how much we could forget in 12 years . . . school days are over for others . . . out into the cruel world . . . for the fellows, maybe the Service.

Now it's all over . . . three years of tests . . . football games . . . all-school parties . . . homework . . . and report cards.

But we'll never forget . . . Class Night . . . our senior play . . . the fun we had at the Prom . . . Commencement at Severance Hall . . . that long walk across the stage to receive our diplomas . . . the last time we sang the Alma Mater.

Joe Alexander  
 Tony Armao  
 Neil Austin



Fred Babcock  
 Steve Barbey  
 Barbara Barch



Barbara  
 Barnard

Joanne  
 Batson

Lois  
 Baumgartner

Carolyn  
 Benson

Dave  
 Berger

Frances  
 Biank

Bob  
 Blair

Audrey  
 Bortner





John Carlozzi  
 Louis Carlozzi  
 Ray Cefaratti  
 Jim Childers  
 Rita Ciasullo  
 Mona Ciccotti  
 George Clappas



Virginia Cleeve  
 Bob Coates  
 John Colacarro  
 Sally Colchin  
 Kathleen Conway  
 Anne Crossley  
 Jerry Crowley





Warren Bower  
 Barbara Bradbury  
 Melvyn Bram  
 Dorothy Brazus  
 Ralph Briggs  
 Philip Brussee  
 Beverly Byers



Sally Cummins  
 Carl D'Ambrosia  
 Richard Dassel  
 Harriet Dawson  
 Merylyn DeMayo  
 Wayne DeVore  
 Leonard DiLillo



**Ideal Boy and Girl . . . Most Likely to Succeed:**  
**Al Singerman, Tom Blanchard, Phyllis Friedman,**  
**and Jill Denison.**

Success — n. Degree or measure of succeeding or  
 attaining one's desired end; kind of fortune.

Dick  
Diritsky

Flossie  
Dodson

George  
Dostal

Janet  
Dunlap

Carol  
Eaton

David  
Edison

Wilma  
Enkler

Elizabeth  
Fisher



Fay Fisher  
 Ronald Fisher  
 Gary Fox



Phyllis Friedman  
 Nancy Froehlich  
 Richard Froehlich

Robert  
 Furlong

Raymond  
 Gallagher

Ralph  
 Gang

Barbara  
 Garwood

Anna Mae  
 Gero

Dolores  
 Gerscheski

Frank  
 Gillespie

Sandra  
 Gochenaur



Martin Goldfarb  
 Nancy Good  
 Joanne Grabert  
 Janis Green  
 Jack Greenberg  
 Georgiann Gumto  
 Barbara Hall



Ronald Isaacson  
 Wilma Jaback  
 Carole Jablonski  
 Betty Jones  
 Elaine Jump  
 Dorothy Kase  
 Gordon Keller







Fred Hamilton  
 Steve Hamilton  
 Elliott Hammerle  
 Niemi Hanson  
 Nancy Hartland  
 Francine Hasher  
 Margaret Herbst



Prudie Hesche  
 Judy Hoffman  
 Marilyn Hoffman  
 Irene Hougland  
 Kay Hughes  
 Alice Huston  
 Barbara Ierg





**Ideal Boy and Girl . . . Leadership:**  
 Barbara Postle, Len DiLillo, Tom Kissack, and Janet Kathe.  
 Leadership—n. Characteristics of one who leads or guides the way. Authority to organize and direct.

Judy  
Keller

Charles  
Kelley

Robert  
Kent

John  
Kline

Lois  
Kramer

Floyd  
Kregenow

LaVonne  
Ladd

Budd  
Lemmerman



Margaret Leonhardt  
Phyllis Lowe  
Roy Lundstrom



Betty Lutz  
Nancy Mackey  
Nancy Magnusson

Joseph  
Mancini

John  
Manning

Howard  
Morse

Tom  
Marshall

Joyce  
Martin

Gloria  
Marvin

Ted  
Mathews

Bonnie  
McCutcheon





Jean Milewski  
 Charles Miller  
 Ed Miller  
 Ed Mimides  
 Don Mixer  
 Eileen Mooney  
 Gerald Moss



Theresa Nardoia  
 Lois Neider  
 David Paden  
 Joanne Palicka  
 William Parkhurst  
 Dorothy Patterson  
 Raymond Pauli





Tom McGonegal  
 Louise McGrew  
 Janet McKee  
 Earl McNeilly  
 Janet Mendenhall  
 Dorothy Michael  
 Alex Michalos



Dorothy Payne  
 Harvey Peskin  
 Barbara Peters  
 Art Peysa  
 Wayne Pieper  
 Dick Pollack  
 Angelo Pompignano



**Ideal Boy and Girl . . . Sense of Humor:**  
 Bob Coates, Ed Conway, Mary Tsevdos, Helen Reid, and Natalie Rigg.

**Humor**—n. Wit; merriment; the tendency to look at things from the mirthful or incongruous side.

Barbara Postle

Paul Radomsky

Donna Renton

Natalie Rigg

Ronald Rogel

Roy Ronke

Jim Ruck

Phyllis Sandstrom



Esther Sapia  
Alden Saxton  
Tom Schafer



Shirley Schmunk  
Robert Scott  
Larry Scully

Allen  
Sebransky

Alvah  
Seibert

Ruth  
Shankland

Marc  
Shapiro

Walter  
Sherman

Alan  
Shifrin

Nancy  
Simiele

David  
Simonis





**Ideal Boy and Girl . . . Scholarship:**  
 Mike Gay, Tom Marshall, Catherine Peters, and Ruth Shankland.  
 Scholarship — n. Character or qualities of a scholar; attainments in science or literature; learning.

Alan  
Singerman

Kathleen  
Skrbin

Lawrence  
Smith

Janet  
Sprinkle

Pat  
Stafford

Robert  
Sweitzer

Virginia  
Thomas

Beverly  
Travis





Mary Tsevdos  
Pat Tulow  
Robert Turner



Florence Valentino  
Richard Vath  
Phillip Vaughan

John Vecchio

Charles Vogel

Jack Walsh

Mike Walsh

William Walters

Beverly Wood

Allan Zambie

Betsy Zowasky





# Commencement . . . January 22, 1953

January Commencement  
 Going Clockwise: Graduating seniors keep poker faces during the invocation.  
 Carolyn Hay marches up to receive her diploma from George Nelson, School Board President.  
 Dennis Smith walks the "last mile" of his high

school career down the aisle past disinterested choir members.  
 George Nelson hands Dennis his unconditional release.  
 In the center is Commencement Speaker Allen V. King, putting his point across to the audience.



Phyllis McCarter, Connie Blair, and John Carlson smile broadly before receiving their diplomas.



**Ideal Boy and Girl . . . Popularity:**  
Kay Anderson, Ken Horton, Janis Green, and  
Floyd Kregenow.

**Popularity** — n. Quality or state of being popular;  
the manifest approval or esteem of many persons  
or the people in general.



# ACTIVITIES

**I**N the next section you'll find the clubs that kept the seniors busy for three years. During that time they learned that the value of an education wasn't only the book learning, the "Hamlet," and the chemistry. They found that together they could march in formation, sing in harmony, and put out a newspaper. Not everyone fled at the sound of the 3:15 bell. There were those who, like the two on the opposite page, remained behind, putting in extra hours, and sometimes glossing over the next day's history assignment.

S



## CANTEEN COMMITTEE



BACK ROW: Jim Marinelli, Tom Paporus, Allan Zambie, Jack Walsh, Len DiLillo, Bill Whitaker, Ken Horton. FRONT ROW: Barbara Last, Lola Zuchenga, Eileen Mooney, Patty Plunket, Carol Sabrack, Janet Sprinkle, Alice Huston.

Entrusted with the job of providing dances for the students after football and basketball games, the 20-odd members of the Canteen Committee meet weekly during football and basketball season to plan their hops.

This year they attracted large crowds at their football dances and not so large crowds at their basketball dances.

From their profits, the organization contributed \$50.00 to the Charity Drive.



One of the newest clubs at Shaw is the Future Nurses' Club. Part of a city-wide organization, F.N.C. was organized by Miss Nina McWebb in 1952 and now boasts a membership of about twenty girls. This year F.N.C. heard student nurses speak on nursing opportunities, and the members toured Huron Road, Mt. Sinai, and Fairview Park Hospitals, as well as the Visiting Nurses' Home. Officiating at the monthly meetings are Irene Bilinski, president; Sandra Simon, vice-president; and Gerry Goske, secretary-treasurer. The purpose of the club is to familiarize girls with opportunities in the nursing profession and help them in the choice of a career.

## FUTURE NURSES' CLUB



BACK ROW: Beverly Beitzel, Carol Frantz, Diane Fellows, Jan Ainsworth. SECOND ROW: Connie Sciortino, Alice Henry, Margaret Barnes, Pearl Virotsko, Mimi Sala, Elaine Ott, Mary McGuire, Carol Rothenberger, Barbara Ayre. FIRST ROW: Marilyn Guffey, Jane Evans, Sandra Simon, Irene Bilinski, Geraldine Goske, Shirley Chiles, and Harriet Dawson.



Elizabeth Hunsicker, and Marion Goldman as Mrs. Calat and Mrs. Marks.

# DRAMATIC CLUB

in scenes from

## "Whistle, Daughter, Whistle"



Budd Lemmerman and Jill Denison as Alan Calat and Peggy Marks.

One of the oldest extra-curricular activities, the Dramatic Club, was organized in 1910. Created "to give Shaw students a means of expression in the field of dramatic arts," the club has functioned steadily since its origin.

Always a popular activity, the organization was so large that from 1924 to 1931 it was divided into two separate groups — one for the seniors, and one for the juniors.

Through the years there arose the tradition of giving a mid-year play. Usually a student-run "Black-Red Review" was also presented. Last year this show was supervised by the Dramatic Club, and given in place of the usual mid-year play.

Determined to make this year's club better than ever, the Executive council planned many active meetings. One of the most successful of these consisted of a movie on stage make-up followed by a demonstration and individual practice.

Two one-act plays, "Who Says Can't?" and "Whistle, Daughter, Whistle," were presented by Dramatic Club members. The latter was also given before the school.



### EXECUTIVE COUNCIL

BACK ROW: Elizabeth Hunsicker, Carole Sabrack, Larry Smith, Jack Walsh, Jack Dreifort, Pat Condon. FRONT ROW: Ed Conway, Jean Witter, Jill Denison, Budd Lemmerman.

# STUDENT COUNCIL

Today's Student Council, under the guidance of Harold Naragon, has taken on many additional responsibilities since its 1921 organization.

The big job of the year, the annual Charity drive in October, went over with a bang as student contributions topped the goal set at \$1125.

Acting once more as foster parents, the council adopted ten year old Maryvonne Foussard, a French war orphan. The group contributes \$180 a year toward Maryvonne's support.

Few students realize the scope of duties and services undertaken by council members. They operate the Lost and Found, and the Cardinals' Nest; choose assemblies and movies; supervise football queen elections; clean the trophy cases; organize all rallies; sell passes; supervise the monitor system; give the broadcasts; and sponsor such social events as this year's two All-School parties.

In their spare time, council members worry about school conditions and suggest improvements.



Harold Naragon, adviser, gives Student Council officers some fatherly advice.

## FIRST SEMESTER OFFICERS

President .....	Tom Kissack
Vice President .....	Len DiLillo
Secretary .....	Lola Zuchegna
Treasurer .....	Tony Beranek

## SECOND SEMESTER OFFICERS

President .....	Len DiLillo
Vice President .....	Bud Cathcart
Secretary .....	Sally Reynolds
Treasurer .....	Bill Parkhurst







**First Semester Council**

**BACK ROW:** Al Singerman, George DeMore, Bob Cathcart, Dick Freedman, Len DiLillo, Bill Parkhurst, Tony Beranek, Dick Kohagen, Jack Hanson, Derry Clay, Floyd Kregenow. **MIDDLE ROW:** David Peters, Dick Traci, Mark Kissack, Tom Kissack, Jerry Dougherty, Bud Grimm, Tom Blanchard, Howard Hanna, Ed Roth, Jim Kitson, Janet Kathe, Barbara Postle, Phyllis Friedman. **FRONT ROW:** Bev Byers, Sally Reynolds, Virginia Mackell, Barbara Barr, Janis Green, Pat Kaburick, Joanne Baumann, Evelyn Welniak, Gail Bowden, Lola Zuchegna, Kayo Pritchard.

School records disclose that student government was not organized at Shaw until 1921.

Membership in this first Student Council was based upon the idea of class seniority. It consisted of two freshmen, four sophomores, six juniors, 12 seniors, the *Shuttle* editor, and three faculty members, one of whom was H. K. Hunter, math teacher.

Among the early Student Council projects was the playing of appropriate "dinner music" in the cafeteria during lunch periods. Friday afternoon dances were regularly sponsored by the council, and students, rather than teachers, acted as monitors in the cafeteria.



**Second Semester Council**

**BACK ROW:** Chuck Pfahl, Joe Palvos, Henry Fisher, John Colacarro, Bill Parkhurst, Tony Baranek, Bob Cathcart, Bill Bennet, Gus Pallad. **MIDDLE ROW:** Dick Traci, Sydney Peterson, Len DiLillo, Ralph Briggs, George Garland, Jim Kitson, Don Asuma, Connie Sciortino. **FRONT ROW:** Lee Wellman, Diane Clay, Janis Green, Pat Kaburik, Anita Leicher, Carol Dietrich, Barbara Postle, Evelyn Welniak, Sally Reynolds.

# MOVIE OPERATORS



Movie operators trade a study hall for the opportunity to become familiar with the projectors and slide machines.

Under the direction of Mr. Albert Dolan, the operators learn valuable technical details and have the opportunity to see the same movie many times.

**BACK ROW:** Phil Brusse, Roy Ronke. **MIDDLE ROW:** Dick Small, Ronald Froehlich, Jim Linn, Dave Berger. **FRONT ROW:** Chuck Pfabl, Fred Sterle.



Seventh period daily, during assemblies, and during plays, the members of Shaw's stage crew are to be found pulling curtains, painting flats, repairing costumes, and building sets. Under the guidance of Miss Lois Dean, the stage crew handles all the technical details involved in the use of the stage.

**BACK ROW:** Tom Marret, Howard Hanna, Ronnie Isaacson, Ronnie Rogel, Dick Freedman, Mark Kissack. **MIDDLE ROW:** Joan Hershberger, Donna Haas, Jean Saha, Barbara McKnight, Fern Kabot, Midge Small. **FRONT ROW:** Dick Traci, Bill Monroe, Jack May, John Martin.

## STAGE CREW

# WHIRLO CLUB



**BACK ROW:** Dorothy Payne, Bob Bythway, Bob Aiken, Joan Braun. **MIDDLE ROW:** Donna Mae Peterson, Joy Reinhard, Wilma Enkler, Dorothy Kase, Mary Lessner. **FRONT ROW:** Kay Miller, Leila Furry, Virginia Conant, Carolyn Benson, Dorothy Bacon, Donna Grahling.

Any Tuesday night at the Trianon Bowling Alley or Thursday at Skateland, members of Shaw's Whirlo Club can be found trying to better their scores or perfect their jumps. A comparatively new club, Whirlo boasts a membership of 38.



# RIFLE CLUB

The Rifle Club was founded to acquaint the students with firearms and to teach them how to handle arms safely.

Students who become interested in the sport have a chance to enter competition under expert instruction.

Paul Cotner, Phil Brown, Jack Hudelson, Tom Schafer.

# HI-Y

Hi-Y dates back to 1911, but locally, it did not hold its first meeting till 1921 when the East Cleveland branch was formed.

The organization's platform — "clean speech, clean sports, clean scholarship, and clean living" — is an ideal towards which its members strive.

Meeting weekly at the "Y" House at Lee and Euclid, four clubs make up the present roster. In the past, there have been as many as seven Hi-Y clubs at one time.

During the past year, speakers at Hi-Y meetings have included East Cleveland's Judge Stanton Addams; Dietman Schaeffer, a young German broadcaster; Paul Stickle, an F.B.I. agent; Rev. Brown; and Jim Stratton, who was with the Armed Forces radio corps in Berlin.

Focal points of the year were the annual Hi-Y show, an old-time melodrama, and the joint Hi-Y-Friendship formal. Other club activities were the vote-and-tote service, the "Youth in Government" mock legislature, and the Community Fund team entered in the Metropolitan division.



## First Semester Officers

President ..... Chuck Vogel  
 Vice President ..... Fred Hamilton  
 Secretary ..... Fred Mueller  
 Treasurer ..... Roy Ronke  
 Chaplain ..... Bob Coates

## Second Semester Officers

President ..... Al Singerman  
 Vice President ..... Budd Lemmerman  
 Secretary ..... Al Zambie  
 Treasurer ..... Larry Smith  
 Chaplain ..... Fred Hamilton

## Delphi

BACK ROW: Jim Kutcher, Jim Leach, Dick Follett, Tom Milligan, John Barkovich. MIDDLE ROW: Jim Kitson, Larry Engman, Bill Batton, Jay Hunton, Tom Perkins. FRONT ROW: Russell Krinsky, Dave Peters, George Garland, Tom Schafer, Dave Welter.

## Halcyon

Bill Gemlich, Dean Louis, Derry Clay, Bill Bennett, Don Campbell, Rollie Remley, John Willert, Bill Braun.





**Amigos**

**BACK ROW:** Eric Hall, leader, Bob Coates, Roy Ronke, Ronnie Isaacson, Gary Fox, Art Peysha. **MIDDLE ROW:** Paul Shaver, Allan Zambie, Ralph Gang, Bruce Motter, Alan Singerman, Gordon Keller. **FRONT ROW:** Jim Mueller, Dick Froehlich, Larry Smith, Fred Hamilton, Chuck Vogel.



A 1937 Hi-Y Club.

**Argus**

**BACK ROW:** Mr. Lawrence, leader, Ken Blum, Dave Glynn, Jack Walsh, Dick Small, Mike Trivisano. **MIDDLE ROW:** Bob Vonada, Ken Schiring, Tom Poling, Jim Barch, Dave Nokes, Ed Kish. **FRONT ROW:** Don Barkley, Fred Mueller, Jerry Dougherty, Tom Schafer, Jack Dreifort, Budd Lemmerman.



# OBSERVER

The *Observer*, a bi-weekly publication, made its initial appearance on April 24, 1930.

It was then that the student body realized the power of the press behind the six-column paper.

The first advisers were Miss Mildred Palmer, English teacher, and Homer Gifford. In 1935 Miss Clara Clendenen, also an English instructor, became adviser, and in 1939 a fellow by the name of Hubert McNeill took over the job as overseer. A journalism class was added one year later.

Judy Stuchul, Allan Zambie, Phyllis Friedman, (Center) Hubert McNeill, advisor.

Mr. Mac, as he is commonly called, still reigns supreme in his basement bower. The journalism class and editors Friedman, Stuchul, and Zambie make up the staff of hearty workers who burn the midnight oil every Thursday before publication. It is then that staff, editors, and adviser remain in school till sometimes 8:00 P. M. "putting the paper to bed."

Mid odors of spaghetti and hamburgers and dissertations on why "due to" is an unpardonable crime, the bits of paper are somehow transformed into an account of events past, present, and future within the walls of Shaw. To climax the evening Mr. Mac has been known to honor the weary remaining staff with an inspired version of "Gunga Din."

This year's *Observer* staff has the distinction of being the first to run financially "in the black" since 1948.

BACK ROW: Sid Herzig, Pat Tulow, Neil Akins, Wayne Croft. MIDDLE ROW: Don Mixer, Eileen Vajda, Joyce Martin, Jan Ainsworth, Carol Provins, John Tomcho, Diane Fellows, Judy Hoffman. FRONT ROW: Joy Cappon, Maxine Cohn, Connie Sciortino, Violet Barbey, Judy Keller, Francine Hasher.



Among Shaw's most loyal athletic fans, there are those to whom the football season means only frozen hands, scraped knees, and laryngitis.

These people, of course, are the cheerleaders who go through all sorts of antics just to get a couple of hearty yells out of the student body.

"The kids are fine at pep rallies," said Bev Byers, head cheerleader, "but once they get down to the game, we can't get a whisper from them."

The history of the cheerleading organization dates back to 1931 when a Cheerio club of boys and girls was formed to lead the traditional "Rah, rahs!"

In the more recent years, the cheerleaders have been an all-female group. This year, though, three boys were added during the basketball season.



Larry Smith, Paul Shaver, Fred Hamilton.



THE FANS, Cheerleader's-eye view.

## CHEERLEADERS

BACK ROW: Nancy Struggles, Catherine Peters.  
MIDDLE ROW: Donna Corsillo, Bev Byers.  
FRONT ROW: Sandy Dickerson, Elaine Stevens.



# SHUTTLE

What is known today as the "Shuttle" was simply called the Shaw High "Annual" back in its younger days. In fact, it wasn't until 1921 that the already 18 year old book was christened the "Shuttle."

The early books were literary ones featuring short stories and poems written by the students. The grand-daddy of today's yearbook, the 70 page 1903 "Shaw," was offered "not for its literary or artistic value, but merely for 75 cents." Although printing costs have risen, the purpose of the yearbook remains the same: to furnish a written and pictorial record of school life.

Laboring under slightly different conditions from those of past years, the '53 *Shuttle* staff found itself faced with the task of putting out a book that would somehow bridge the gap from 1903 to 1953.

Whether or not we have been successful, we do not know. Yet we feel that this volume is worthy of all the efforts that have gone into it. Those who contributed to these pages have been many, and their contributions have ranged from pasting to writing to hounding you for your \$3.25.

If you've noticed gray hairs gracing our heads, be assured that there has been good reason for them; e.g., the time when the senior pictures were so well hidden that nobody knew where they were.

But with all the work, all the rubber cement, and all the homework we haven't done, the entire staff agrees about one thing; it's been fun!

The Editor.

## Shuttle Editors

BACK ROW: Germaine Gibian, Phyllis Friedman, Judy Stuchul, Budd Lemmerman, Allan Zambie, Carolyn Benson. FRONT ROW: Judy Keller, Bruce Holderbaum, Advisor, Francine Hasher.







BACK ROW: Harriett Dawson, Virginia Conant, Nancy Magnusson, Elizabeth Hunsicker. MIDDLE ROW: Esther Sapia, Sally Cummins, Anne Crossley, Anola Schenck, Sally Dunn. FRONT ROW: Niami Hanson, Charlene Matia, Howard Hanna, Ellen Jean Price, Eilcen Vajda.

BACK ROW: Barbara Dwyer, Lee Wellman, Georgene Krantz, Howard Hanna, Frank Gillespie, Bill Monroe, Emily Watkins, Diane Clay. MIDDLE ROW: Judy Keller, Diana Reynard, Sally Dunn, Dorothy Michael, Joanne Palicka, Anne Lindsay, Judy Parkhurst. FRONT ROW: Barbara Johnson, Gloria Cali, Edith Simese, Marion Goldman, Gertrude Lass, Rosemary Dohm, Rosemary Rogers.





**VIOLIN**

Jeanne Ahearn  
Joan Brown  
Nancy Crall  
Wilma Enkler  
Freida Laubaugh  
Grace McDonald  
Louise McGrew  
Nancy Nelson  
Dorothy Payne  
Evelyn Welniak

**VIOLA**

Joanne Bauman  
Germaine Gibian  
Ruth Shankland  
Janet Sprinkle

**CELLO**

Nancy Magnusson  
Catherine Peters  
Alan Singerman

**BASS**

Nancy Struggles  
Jack Walsh  
Emily Watkins  
Anne Wills

**FLUTE**

Harriet Dawson  
Helen Rendlesham

**CLARINET**

Beverly Beitzel  
Bruce Motter  
Ken Schiring  
Lucy Wallace

**OBOE**

Nancy Carlson  
Virginia Rose

**BASSOON**

Carol Eaton

**TRUMPET**

Tony Armao  
Don Felice  
Ronald Froelich  
Jim Thompson

**FRENCH HORN**

Sandara Brown  
Diana Reynard

**TROMBONE**

Gerry Dougherty  
Gloria Marvin

**DRUMS**

Chuck Alexander  
Tom Griffiths

**PIANO**

Corrine Wiler

**Orchestra Officers**

President ..... Catherine Peters  
Vice President ..... Al Singerman  
Secretary ..... Evelyn Welniak  
Librarian ..... Louise McGrew  
Anne Wills  
Wardrobe ..... Germaine Gibian  
Nancy Magnusson  
Al Singerman

# ORCHESTRA

Evolving in 1911 from a small mandolin-banjo club, the Shaw Orchestra has become a very complex organization.

At the beginning, the group consisted of nine members directed by Miss Eastman. It had the distinction of being the first high school orchestra in Cleveland. From 1925 to 1950, the Orchestra was directed by Milton Niergarth. Today's group is led by S. Robert Fraser.

The Shaw Orchestra handles difficult symphonic pieces, not usually attempted by high school orchestras. The group plays works ranging from Bach to Berlin to Bartok to Be-Bop. The Orchestra, many members of which belong to local non-professional symphonies, won a first rating in Ohio State contests in 1949 and 1951.

The group has played this year at the Armistice Day assembly, the Christmas program, Class Nights, Commencements, the Hi-Y show, the Spring Concert, and the Lake Erie League Festival.

Music as seen by a violin.



# CHOIR

There has been an organized choral group at Shaw High School since 1904. The 1904 group was only a Girls' Glee Club, but the next year it joined the Boys' Sextet and became the Shaw Glee Club.

This group continued until the early twenties, when the first ACapella Choir was formed by Miss Shaffer.

The musical directors that have followed are: Jacob E. Hines; Edgar E. Vance; S. Robert Fraser; and the present director, Miss Margery Shields.

The present 92 voice Shaw Choir sings on various occasions throughout the year. Some of the programs this year have been: the Christmas Concert, Christmas Caroling at Halle's, Caroling on the Public Square, the Commencement programs, Open House, the Lake Erie League Festival, the Armistice Day program, and the Spring Concert.



Miss Shields as seen by a choir member.



- |                    |                    |                  |                  |
|--------------------|--------------------|------------------|------------------|
| Joanne Baumann     | Joy Hossel         | John Barkovich   | Lee Roy Mikut    |
| Christine Beach    | Marilyn Johnson    | Tom Babbitt      | Bill Monroe      |
| Helen Bliss        | June Kapps         | Louis Cowles     | Bruce Motter     |
| Audrey Bortner     | Pat Kennedy        | David Davis      | Jim Nelson       |
| Marilyn Cabot      | Doris Leonard      | Bill Dignin      | Gus Pallad       |
| Joy Cappon         | Barbara MacEachron | Jack Dreifort    | Ed Panesky       |
| Patricia Ciomek    | Virginia Mackell   | Dave Edison      | Sidney Peterson  |
| Lucy Cirkova       | Nancy Magnusson    | Dick Faragher    | Chuck Pfahl      |
| Virginia Cleeve    | Gloria Marvin      | Don Felice       | Ronnie Rawley    |
| Nancy Crall        | Sally McCrory      | Ronald Frew      | Ken Ryder        |
| Jill Denison       | Bonnie McCutcheon  | George Garland   | Jim Ruck         |
| Flossie Dodson     | Barbara McKnight   | David Grotenfend | John Schalois    |
| Barbara Earley     | Janet McKee        | Fred Hamilton    | Al Sebransky     |
| Barbara Ensign     | Dorothy Michael    | Alfred Hoffman   | Paul Shaver      |
| Jane Evans         | Jeanne Nelson      | Jay Hunton       | Alan Singerman   |
| Elizabeth Fisher   | Joan Patterson     | Chuck Kelly      | Renfrew Spence   |
| Elaine Forkapa     | Carol Sabrack      | Auguste King     | Fred Sterle      |
| Nancy Froehlich    | Sandra Simon       | Jim Kitson       | Harold Thornhill |
| Dianne Gerscheski  | Nancy Struggles    | Walter Klaus     | Jack Walsh       |
| Dolores Gerscheski | Gloria Vara        | Warren Ledger    | Joe Weinhofer    |
| Germaine Gibian    | Evelyn Welniak     | Budd Lemmerman   | Dave Whitehorn   |
| Marilyn Guffy      | Anne Wills         | Ronnie McCoy     | Allan Zambie     |
| Georgieann Gumto   | Jean Witter        |                  |                  |
| Nancy Hartland     | Charlotte Wormald  |                  |                  |
| Julie Hatch        |                    |                  |                  |

## Choir Officers

- |                           |                 |
|---------------------------|-----------------|
| President .....           | Jill Denison    |
| Vice President .....      | Bruce Motter    |
| Secretary-Treasurer ..... | Jane Evans      |
| Librarian .....           | Janet McKee     |
| Wardrobe .....            | Germaine Gibian |
|                           | Nancy Magnusson |
|                           | Chuck Pfahl     |
|                           | Al Singerman    |

# BAND

With a membership of 25 and a trumpet player as director, the Shaw band made its debut in 1924 in a small way, that is. In 1925 the organization had acquired one female member who was elected secretary.

By 1926, the band had become a regularly scheduled class with the late Milton Niergarth as director. Uniforms were first worn in the late '20s when the 85 young musicians placed third in Class A competition. Shaw received state-wide honors in '35 when the band placed first in the State Band contest held in Columbus.

At this time there was, by the way, a young assistant director named S. Robert Fraser.

"And the band played on . . ."

Today's band, under the able baton of S. Robert Fraser, is familiar to everyone at Shaw through its half-time shows presented during the football season, and its performances at rallies.

This year, for the first time, the band gave a Sunday afternoon pop concert, and showed color movies of the marching band.

In the spring, the band, which last year was rated first in northern Ohio, gave a concert in conjunction with Brush and Garfield Heights High Schools. They also played at a hockey game, and practiced diligently for the annual Spring Concert and the contests.



S. Robert Fraser, conducting.



## FLUTES AND PICCOLO

Margaret Delvigs  
Doris Leonard  
Laura Moehl  
Carol Norwick  
Helen Rendlesham  
Mary Lou Walton

## OBOE

Nancy Carlson  
Judy Funk  
Virginia Rose

## BASSOON

Carol Eaton  
Joanne McConnell

## CLARINET

Charles Armao  
Barbara Barch  
Beverly Beitzel  
David Glynn  
Pete Golash  
Muriel Gordon  
Lois Gorman  
Georgieann Gumto





## OCTET

Formed to entertain at gatherings too small to accommodate the whole choir, today's Octet is an outgrowth of an all-male sextette which started harmonizing way back in 1903.

Since then, there have been various individual choral groups ranging in name from the barber-shop quartet to the Sophisticates.

Members of the Octet are chosen by Miss Margery Shields, choir director, on the bases of voice, harmony, and stage presence.

Newest addition this year are the boys' white dinner jackets purchased from money received for the group's appearances.

STANDING: Chuck Pfahl, Barbara Earley, Walter Klauss, Jean Witter, Jay Hunton, Georgieann Gumto, Dave Davis, Jill Denison. AT THE PIANO: Joanne Baumann.

From the earliest days of Shaw High School, there has been a Girls' Glee club.

The tradition was broken this year, however, as the all-girl vocal group added boys to their midst, thereby becoming a mixed chorus.

"Chorus," says Miss Shields, "serves as a training ground for future choir members and provides valuable experinece in vocal group work."

## GIRLS' GLEE CLUB



FOURTH ROW: Janet Leadbetter, Betty Kerrigan, Margaret Delvigs, Margaret Leonhardt, Evelyn Thomas, Corine Wiler, Florence Valentino, Marilyn Hicks, Carol Gibson, Dolores Bart, Darlene Mapes. THIRD ROW: Nina Pompignano, Carole Jablonski, Carol Frantz, Ruth Hutter, Janet Mendenhall, Claire Dell Pugh, Anita Leicher, Jill Dreifort, Dorothy Kase, Barbara Luxenburg, Josepha Rust. SECOND ROW: Genny McWhirter, Betty Ann Leitz, Joan Cosgrove, Donna Haas, Nancy Hall, Clara Pudnam, Shirley Chiles, Nancy Gabriel, Janet Olhana, Judy Funk, Linda Washner. FIRST ROW: Evelyn Bosky, Gail Grey, Jane Andale, Jane Berger, Dolores Iacobellis, Barbara Skelly, Margaret Barns, Connie Sciortino, Charlene Hall, Betty Ann Lutz.

# MAJORETTES AND MAJOR



Peggy Wintersteller, Donna Felger, Rosemary Inzano, Joyce Martin, Barbara Garwood, Julie Hatch.



Budd Lemmerman.

What is cake without frosting or apple pie without cheese? Well, in a word that would be like the band without a drum major backed by a corp of high strutting majorettes.

In 1926 the band under the direction of Milton Neirgarth first started its long and successful career. A drum major was chosen to lead the band on the field, but little thought was given to any added display work. The major, a member of the band, was chosen for his leadership and, although important, twirling a baton was secondary.

Majorettes were first introduced 12 years ago when a group of girls gathered together, designed their costumes and became the high stepping Shaw majorettes.

Leading the way down the field this year were major, Budd Lemmerman and majorettes, Donna Felger, Barb Garwood, Julie Hatch, Joyce Martin, Peggy Wintersteller, and Rosemary Inzano.



BACK ROW: Janet Sprinkle, Nancy Struggles, Joanne Baumann, Catherine Peters. FRONT ROW: Louise McGrew, Grace McDonald, Evelyn Welniak.

## STRING ENSEMBLE

The String Ensemble, organized at Kirk in 1949, consists of seven girls. (Four violins, a viola, a cello, and a bass.) Playing semi-classical music, the girls appeared this year at the Community Council dinner, the Football banquet, the Junior Kiwanis dinner, and a Caledonia P.T.A. meeting. For the past two years, the group has received a first place rating in the Greater Cleveland Solo Ensemble contest. Any money received for their appearances is donated to the orchestra fund.



Phil Vaughan oom-pahs.



Mr. Fraser supervises as Ruth Shankland, Dorothy Payne, and Nancy Magnusson tune up.





BACK ROW: Allan Zambie, Louis Schmidt, John Willert, Roy Ronke, Ken Fetheroff, Bob Cathcart.  
MIDDLE ROW: Charles Solomon, Derry Clay, Janet Sprinkle, Tom Kissack, Carolyn Hay, Ed Roth, Alan Singerman. FRONT ROW: Barbara Barnard, Joanne Palicka, Dolores Gerscheski, Barbara Postle, Carol Eaton, Dolores Schwimmer, Lola Zuchegna.

## NATIONAL HONOR SOCIETY

One of the highest honors that can come to a Shaw High student is to be elected to the National Honor Society. Highly select, the Society takes only the top 15 per cent of a class.

Founded in 1925, N. H. S. at first was only a school group. A few years later it joined the national organization of which it is still a member.

Prospective members are evaluated by all their teachers and their advisors in extra-curricular activities. The final choice is made on the basis of four qualities — scholarship, leadership, character, and service. Testifying to the ability of the members is the fact that the majority of them go on to college after graduation.

Speaker at the induction ceremony this January was Dr. Robert Shankland, Head of the Physics Department at Case Institute of Technology who reminisced about his own days as a student at Shaw when he did his homework on the electric inter-urban car while commuting from Willoughby.

Officers for the fall semester were: Mike Gay, president; Jerry Dougherty, vice president; Jill Denison, secretary; and Tom Blanchard, treasurer.

BACK ROW: Phyllis Friedman, Tom Blanchard, Ronald Froehlich, Tom Marshall, Mike Gay, Gerry Dougherty, Janet Kathe. FRONT ROW: Janis Green, Ruth Shankland, Nancy Hartland, Donna Renton, Jean Milewski, Judy Keller, Jill Denison.



New members receive congratulations after the January induction.



SENIOR FRIENDSHIP CABINET



BACK ROW: Donna Haas, Janet Mendenhall, Alice Huston, Sandy Gochenaur, Eileen Mooney. MIDDLE ROW: Joyce McKenzie, Joanne Palicka, Nancy Carlson. FRONT ROW: Joan Hershberger, Kay Anderson, Carolyn Hay.

## SENIOR FRIENDSHIP CLUB

As can be inferred from its name, one of the chief aims of the Senior Friendship club is to encourage friendliness among Shaw girls. It offers an opportunity to newcomers to meet the girls who will be their classmates and to make new friends among them.

Organized in 1919, the club also aims "to give opportunities for service in school and community, and to have its members cherish the noble thoughts and ideas leading to growth in personality and Christian character."

By 1926 the 300-member club had started a scholarship fund for worthy girls.

This year, Senior Friendship activities included a Christmas party, a style show, and a carnival. They also had a member of the Family Service Association speak to them on "Boy-Girl Relationships."

In the field of service to the community, this year's Senior Friendship girls collected clothes for Rainbow Hospital, and made favors for hospital trays.

Officers for the First Semester:

President ..... Joan Hershberger  
 Vice President ..... Phyllis McCarter  
 Program Chairman ..... Kay Anderson  
 Secretary-Treasurer ..... Janet Kathe

Second Semester Officers:

President ..... Eileen Mooney  
 Vice President ..... Barbara Ierg  
 Program Chairman ..... Joanne Palicka  
 Secretary-Treasurer ..... Bonnie McCutcheon

Janet Kathe, Kay Anderson, Joan Hershberger, Roseann Blakemore, and Eileen Mooney set up a booth for the Senior Friendship carnival.



## JUNIOR-SOPHOMORE FRIENDSHIP CABINET

**BACK ROW:** Virginia Mackell, Susan Widlitz, Geraldine Goske, Marjorie Small, Evelyn Welniak, Ellen Jean Price. **FRONT ROW:** Jean Witter, Connie Sciortino, Carole Sabrack.



## JUNIOR-SOPHOMORE FRIENDSHIP CLUB

In 1950, for the second time in its history, Friendship club became too large for all its members to participate actively. And so, as in the years from 1922-1945 it was divided into two separate clubs. The Junior-Sophomore club, for which all 10B, 10A, and 11B girls are eligible, is under the direction of Mrs. Ayleen Morley. The club's big project this year was the making of stuffed animals from oilcloth. The hand-made toys were distributed as Christmas presents to needy children.

Social events that helped members get acquainted (and have fun, too) included a picnic, a splash party, and Hallowe'en and Christmas parties.



### H. R. REPRESENTATIVES

**BACK ROW:** Irene Bilinski, Carol Frantz, Gloria Vara, Margie D'Ambrosia, Donna Stam, Eileen Vajda, Jean Nelson. **FRONT ROW:** Susan Marsh, Christine Hamilton, Sally Reynolds, Marietta LaGrasso, Charlotte Wormald, Sandy Dickerson.

# FOOTBALL QUEEN



JANET KATHE

Climaxing a week of posters, slogans and high campaigning, the results of the annual football queen election were announced at the Lakewood pep rally.

Len DiLillo, Student Council vice president, held the audience breathless as he announced that the '52 queen was . . . "Irish Bob" McGraw!

Later, more accurate reports proved the queen to be Janet Kathe. Janis Green and Kay Anderson were attendants.

### QUEEN CANDIDATES AND MANAGERS

Kay Anderson .....	Joe Mancini
Connie Blair .....	Earl McNeilly
Roseanne Blakemore .....	Tom Blanchard
Janis Green .....	Ed Roth
Janet Kathe .....	John Colocarro
Lee Wood .....	Ed Conway

The royal trio, Janis, Kay, and Janet.  
"And we announce that the '52 queen is . . .



# COLLEGE CLUB

College club president, Phyllis Friedman; treasurer, Judy Keller; and secretary, Janet Mendenhall read the latest college bulletin while Veep, Alan Singerman watches the birdie.



Visits to college campuses, speakers from various universities, and discussions on college life are all part of the College club program.

This year College club members initiated something new by visiting Western Reserve, Wooster, Kent, and Hiram college campuses. Featured programs in the past have included a discussion on R. O. T. C. by officers from John Carroll University, a movie about college life from the University of Miami at Coral Gables, Florida, a discussion on choosing colleges and vocations by members of the Western Reserve Debate team, a panel on co-educational colleges vs. men's or women's colleges, and one on scholarships available in Ohio colleges.

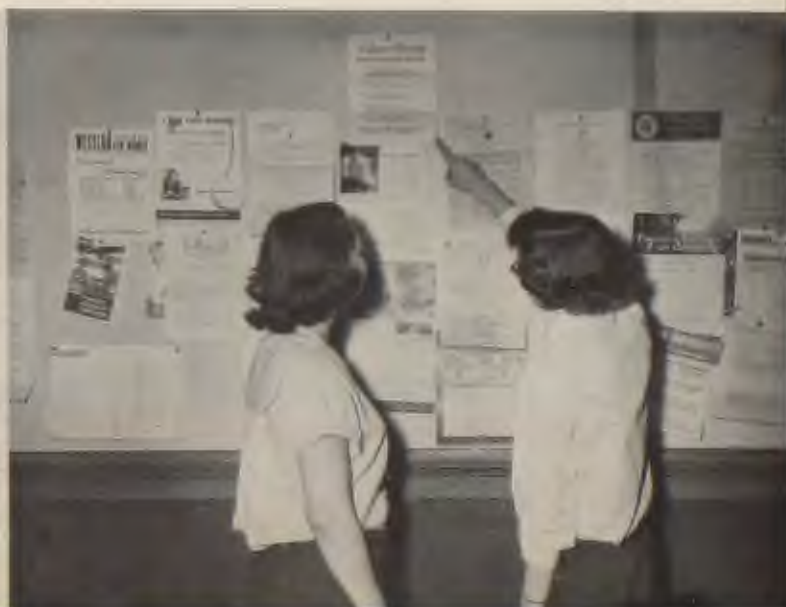
Membership in this organization was originally limited to seniors but is now open to any Shaw student. This year, 70 sophomores, juniors, and seniors make up Shaw High's College club.

The program committee is composed of Jill Denison, Mike Gay, Connie Sciortino, and Allan Zambie.

Miss K. Lucille Provo, dean of girls, is the faculty adviser.

Guest speakers at the February meeting are: Mary Jean Perry, Dave Santoro, Phil Traci, and Nancy Hood.

College club members keep an eye on bulletin board in room 10.





# SPORTS

SOMEONE once said, "All work and no play makes Jack a dull boy." Ask some of the boys on the teams you'll see pictured in this section, and we think they'll be inclined to agree. Some are three year football men. Some have experienced the biting cold of football, the trained muscles of basketball, and the bursting lungs of a track meet all in a single year. What they have learned is that intangible thing called teamwork: getting along with the other guy. If you saw the Lorain game, you saw the scene on the opposite page. It's Floyd Kregenow trying to evade a couple of his opponents.



In 1902 sixteen boys clad in an assortment of sweatshirts and knickers walked out of the old Shaw Academy building to practice football. They wound up with a won four, lost three, tied one record. Fifty years later some 35 uniformed boys, playing six of their nine games in a large, lighted stadium, finished with almost the same record. As in any normal school, the intervening years saw both better and worse teams than these two.

In 1913, "the greatest year in athletics" that the school had experienced thus far, a powerhouse squad defeated every team in the Quad League (Shaw, East, Central and University schools), amassed 297 points to its opponents' 22, and walloped Painesville 108-0. Two years later Shaw went undefeated, won the Quad title, and played the best teams in the State.

The football team was undefeated again in 1918, but the season was shortened by two weeks because of the flu epidemic of that year.

In 1923, Shaw again went unbeaten, copped the Quad title and the City Championship, and in a post-season game beat Salem High of Massachusetts, one of the leading teams.

Unfortunately, after the close of the season, a Shaw player was discovered to be over-age, so the Quad cup was forfeited. Shaw stadium was opened during this banner season and Shaw celebrated by beating Heights 31-0.

During the balance of the '20's the teams were well above average. In 1927, when Shaw squads had beaten Heights for the seventeenth straight time, we finished second in the newly formed Lake Erie League.

The next decade saw plenty of ups and downs in Shaw football. In 1932, we tied Heights for the League championship.

Then, three years later, a *Shuttle* writer sagely observed that the 1935 team "lacked that element which makes teams great." The squad that year didn't score a single point. Lorain whipped them 70-0.

From this low point, the team worked themselves to a first place tie with Lakewood in 1940 and a second place tie with Lorain the following year.

The more recent past has not been particularly glorious; neither has it been discouraging. During the past few years it has followed a middle-of-the-league pace.

And so, athletically speaking, through the years Shaw has blazed a place for itself in high school sports. Across the page you'll see some tangible evidence of that prowess.



## shaw has won her fame







BACK ROW: Manager Dick Rutherford, Manager Jim Marinelli, John Carlson, Bill Ward, Rollie Remley, George Schultz, George Kalas, Dick Follett, John Kline, Bob Albrecht, Bill Parkhurst, Sidney Kershaw, Bill Bennett, Ray Lamcha, Bill Braun, Manager Earl McNeilly, Manager Gus Pallad.  
MIDDLE ROW: Coach Bob McGraw, Bud Grimm, Harvey Peskin, Alex Michalos, Jim Thompson,

# VARSITY

With 14 lettermen returning from last year's squad, Coach Bob Cawrse and his staff had high hopes for the 1952 football season.

In their initial game with Toledo Libbey, last year's city champions of Toledo, there stood very little hope for the Cardinals. Showing a good running attack with some good passing, the Cardinals whipped them 33-19 as Ken Horton scored four T. D.'s.

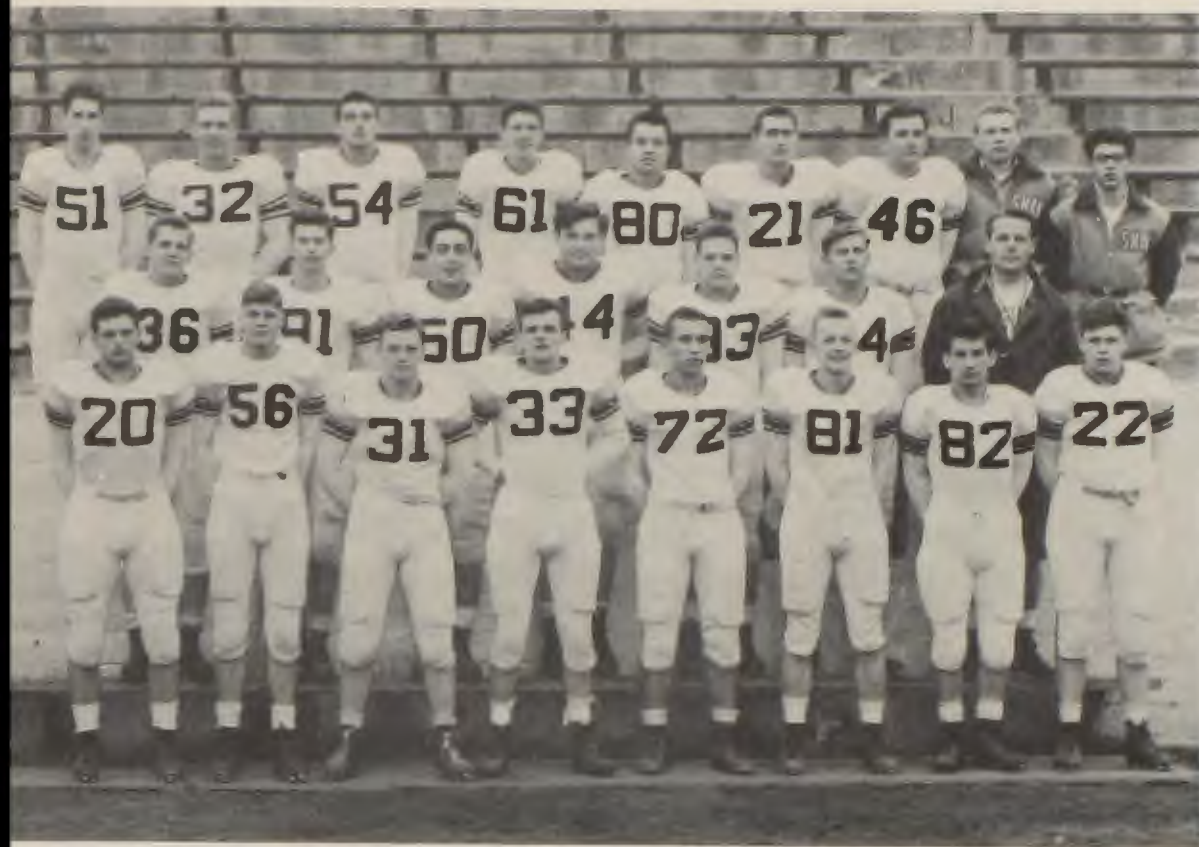
Scoring three times in the second half, the Collinwood Railroaders defeated the hopeful Redbirds 21-0.

Coach Cawrse's Alma Mater, Maple Heights, was next in line and the Cardinals disposed of them with a 44-7 victory. Al Sebransky scored three times, Ken Horton twice, and Harvey Peskin on the first offensive play for Shaw.

Powerful Elyria did everything right and the Cardinals every-

## SCORES

Shaw 33	.....	Toledo-Libbey 19
Shaw 0	.....	Collinwood 21
Shaw 44	.....	Maple Heights 7
Shaw 0	.....	Elyria 33



Bob Cathcart, Vaughn Angle, Bob Morrison, Jack Hanson, Len DiLillo, Dick Dalesandro, Derry Clay, Sam Rondini, Coach Bob Cawrse. FRONT ROW: Roy Ferguson, Ken Horton, John Vecchio, Bill Whitacre, Tom Kissack, Bob Kent, George Dostal, Dick Kohagen, Tom Lowery, Ray Gallagher, Bob McKnight, Jay Hunton, Al Sebransky, John Borthwick.

# FOOTBALL

thing wrong as the Pioneers won 33 - 0.

The win one, lose one procedure continued as the Cardinals defeated the Euclid Panthers for their first Lake Erie League win, 13 - 7 with Dick Kohagen and Al Sebransky scoring for Shaw.

A usually weak Shaker team upset the Cardinals 12 - 7 in the next game.

After Jay Hunton ran 80 yards for a touchdown against the powerful Lorain Steelmen, hopes for an upset were in the making. But the final score was 26 - 12 against the Cardinals who, by the way, played one of the finest games of the season.

This year's weak sister of the League, Cleveland Heights, fell before Shaw 20 - 6.

Seventeen seniors bowed out in a blaze of glory as the Cardinals upset highly favored Lakewood 25 - 19 for a won five, lost four season record.

## SCORES

Shaw 13	.....	Euclid	7
Shaw 7	.....	Shaker	12
Shaw 12	.....	Lorain	26
Shaw 20	.....	Heights	6
Shaw 25	.....	Lakewood	19





On the opposite page we have:

Floyd Kregenow jumping at center;  
Galen Mack finishing a mile run;  
Kenny Horton receiving a pass;  
Al Michalos just missing one;  
Horton running for a T. D.;  
Jay Hunton bringing down an aggressive ball carrier;  
The band marching down the field;  
Rollie Remley about to be tackled.

On this page:

Hunton attempting extra yardage;  
Dedication of Shaw Stadium in October, 1923;  
Whitacre drops in two;  
Dick Kohagen brought down after sprint;  
A two-handed push by Kohagen.





Ken Horton



Wayne DeVore

## SENIOR BASKETBALL PLAYERS

Floyd Kregenow



George Dostal



# VARSITY BASKETBALL

Although there wasn't much height, there was plenty of fight.

This seems to sum up the '52-'53 varsity cagers, whose tallest player claimed six feet two inches.

Mainstay of this year's squad was lanky center Floyd Kregenow who in the first game of the season, with Collinwood scored a near record of 35 points.

Backboard prowess was also demonstrated by Dick Kohagen and Bill Whitacre.

Mid-year graduation claimed Ken Horton, team

captain and guard who sparked the squad until January.

John Abazio, Jerry Carlton, Derry Clay, Wayne Devore, George Dostal, and Bob Cathcart offered plenty of good bench strength. Bob was out of commission for some weeks because of a sprained ankle.

The latter part of the basketball season saw Coach Roy Wisecup bring Junior Varsity players Jay Hunton and Jim Marinelli onto the varsity floor. Jay, it is said, is the speediest man on the squad, and Jim the shortest.

## SCORES

Shaw 73	.....	Collinwood	69
Shaw 59	.....	Elyria	56
Shaw 52	.....	Shaker Heights	48
Shaw 62	.....	Lorain	55
Shaw 50	.....	Lakewood	53
Shaw 55	.....	Euclid	67
Shaw 50	.....	Cleveland Heights	56

Shaw 72	.....	Elyria	59
Shaw 49	.....	Shaker Heights	65
Shaw 37	.....	Lorain	46
Shaw 49	.....	Lakewood	50
Shaw 42	.....	Euclid	64
Shaw 87	.....	University School	33
Shaw 54	.....	Cleveland Heights	63

BACK ROW: Coach Roy Wisecup, Wayne DeVore, John Abazio, Bob Cathcart, Bill Whitacre, Jay Hunton. FRONT ROW: Dean Apple, Jerry Carlton, Derry Clay, Floyd Kregenow, George Dostal, Dick Kohagen, Gus Pallad.



# JUNIOR VARSITY BASKETBALL

Although they never make the headlines, the Junior Varsity basketball team plays games just as exciting as the regulars.

Led by the fancy-dribbling Jim Marinelli and George Garland; strengthened by the accuracy of Jay Hunton, Jim Leach, Jack Hansen; and supported

by Dick Follett, Bill Batton, Tom Walworth, Jerry Bunt, and Forrest English, the junior varsity team was able to blaze a trail of wins for itself.

This year's team was coached by Grant Kibbel, who helped lead last year's squad to seven victories and three losses.

# JUNIOR VARSITY FOOTBALL

Starting the season off with two straight victories the Junior Cardinals then lost their remaining four games. Elyria, the first victim on the schedule bowed to the Red Birds with a score of 19-13. Euclid couldn't keep up with the Cardinals as they won their second in a row 20-13.

The next four games the Cardinals lost. Shaker won 20-6; Lorain triumphed 34-18; Heights was

victorious 20-6, and Lakewood shut them out 25-0.

Next year the varsity will be in need of several members of the Junior Varsity to fill backfield and line gaps caused by graduation. Bill Batton, Hank Fisher, Tony Zampino, Jim Leach, Don Newberry, and several other members will do their best to fill the spaces next year.







BACK ROW: Forrest English, Kurt Rusch, Dick Follet, Jack Hanson, Tim Walworth. MIDDLE ROW: Bill Batton, Jay Hunton, Jim Leach, Jerry Runt, Harold Thornhill. FRONT ROW: Jim Kitson, Jim Marinelli, George Garland, Don Asuma.



BACK ROW: Ken Wolfson, Bill Batton, John Stewart, Tom Stemple, Al Lupatin, Jim Leach, Pat Webster, Hank Fischer, Jack Hennen. FRONT ROW: Don Asuma, Nick Bucceri, Pat Pace, Harvey Weiner, Dean Apple, Donn Camlin, Jim Kitson, Don Newberry, Karl Smith, Mark Kissack.

# IT'S A . . . . BASKET!

## Intramural Basketball



JUMP BALL

From its start in the latter days of November to its completion in February, the Intramural basketball competition was tough going, even for the championship team. With five teams sharing first and second places in the Junior-Senior league, there was plenty of keen rivalry and hot competition right up to the last hard-fought game.

Following last year's pattern, the homerooms substantiated the fact that intramural basketball is not to be considered lightly, for they gave spectators many exciting moments of championship basketball.

Jack Moore, woodworking instructor, supervises the league competitions. Homeroom 30 triumphed over all challengers in the Junior-Senior League, and the winner of the Sophomore League crown was Homeroom 39.

*Back Row:* Gus Pallad, Harvey Peskin, Alex Michalos, Sydney Kershaw, Dale Parch, Don Clark. *Front Row:* Marty Goldfarb, Jim Barber, Ken Ryder.





Trying to produce a winning swimming team is the job of Douglas "Doc" Vivian, who may be found night after night in the pool helping the boys improve their swimming strokes.

The newest addition to the coaching staff is Jack Moore, who took the reins as tennis coach and Intramural basketball head. He joined the staff in September after coming to Shaw from Coshocton.

Assistant football coach and head track coach is "Irish" Bob McGraw. Called into active duty more than a year ago, Bob served several months in Korea before being released from service. An experienced football tutor, this was his first year as a track coach. "The boys helped a lot though," he said, "because there were so many back from last year."

Wayne Caroff is the man who shows the inexperienced linemen how to block, tackle, and do various other fundamentals that are necessary in order to have a good team.

## COACHES

Taking up the helm of the Shaw football team for the third year was Bob Cawrse. This year's team won five games while losing four. The team, under his guidance, has a total of 12 wins, 13 losses, and two ties.

Starting his 22nd season as basketball and baseball coach, Roy Wisecup also officiates at college basketball games, and, in '52 he was the official at the Charity game held in the Cleveland stadium. In 1944 Roy brought the State baseball championship to Shaw.

Grant Kibbel puts a little psychology into his football and basketball coaching. His main job is to help the junior varsity boys, but he also does a little scouting on the opposition during the football season.

Robert P. Louis, athletic director, spends his time worrying about budgets, and whether the football team will make enough money to carry the cost of the rest of the sports.



# SWIMMING



LARRY SMITH

Shaw tankers splashed their way to a rather unsuccessful season this year — no wins.

Swift senior Larry Smith led the team in scoring, winning sixteen out of eighteen races in the dual meets. He also placed in the City, Lake Erie League, and District meets.

Aiding Larry in the scoring column were Vaughn Angle, Larry Johnson, Larry Landis, Jack Lewis, and Phil Vaughan.

Although the team did not finish in the top brackets this season, chances are they will make a good showing next year since a majority of the mermen will be returning. The only boys the team will lose are Larry Smith and Phil Vaughan who graduate in June. Since many of the returning boys are sophomores, they will have a full two years to develop their swim styles under the guidance of coach Doc Vivian.

*Back Row:* John Willert, Edward Putman, Dave Glynn, Pat Webster, Brian Smiar, Peter Ness, Pat Burke, Ronnie Jump. *Middle Row:* Jimmy Elles, Larry Landis, Sidney Peterson, Bob Aiken, Joe Lose, Tom Murette, Bob Vonada, Coach "Doc" Vivian. *First Row:* Tom Perkins, Mike Bradford, Jack Lewis, Larry Smith, Jim Vogel, Harry Johnson, Bill Monroe.



# CROSS COUNTRY

Shaw's cross-country team copped fourth place in Lake Erie League competition at Forest Hills park on October 18, 1952.

Tommy Mormino ran eleventh, followed closely by twelfth place Gilbert Gray. Fred Hamilton finished fourteenth. However, Shaw men were overpointed by the first place Lakewood squad.

At Highland Golf course on October 25th, Shaw wound up seventh in the East Side District meet. There were two outstanding performances.

Gilbert Gray was awarded a gold medal for finishing among the first ten runners, and Tommy Mormino won a silver one for being among the first 20 to finish.

Other members of the team, coached by faculty member, Bob McGraw, are Tom Marett, Bob Vonada, Tony Beranek, Russ Knoefel, and Owen Dixon.

BACK ROW: Coach Bob McGraw, Gilbert Gray, Tom Mormino, Tony Beranek, Dick Rutherford.  
FRONT ROW: Tom Marett, Fred Hamilton, Bob Vonada.



# TENNIS

Battling their way to the top of the Lake Erie League, the courtmen finished with seven wins and two defeats in the spring season; and four victories and two losses in the fall season. The spring team also placed first in the district championship.

Paul Martin led the way by winning seven of his nine singles matches. He also captured the district singles championship.

Other top "soloists" were Case Sprenkle and Jim Snavelly, who combined forces to win the district doubles contest.

Martin, Sprenkle, and Snavelly were aided by Ralph Briggs, Jack Greenberg, Lee Roy Mikut, and Al Seibert, who returned for the fall season.



BACK ROW: Chuck Pfahl, Ralph Briggs, Bob Scott, Al Seibert.  
FRONT ROW: LeRoy Miket, David Peters, Jack Greenberg.

Shaw's diamond men finished last spring's season with three wins and nine losses.

Jim Gunder led the pitching staff with two victories and seven defeats. He was followed by Gene Reeser with one win.

Leading slugger on the '52 baseball team was sophomore Bill Whitacre who ended the season with a .341 batting average. He was followed by Chuck Westfall, Bud Grimm, and Ken Horton.

Other first stringers were Derry Clay, John Kline, Bud Dostal, Wayne DeVore, and Jim Capelletti.

## BASEBALL

Bill Whitacre, Ken Horton, Bud Dostal, Jim Gunder.

BACK ROW: Mal Bram, Coach Wisecup, Bob Church, Francis Henry.  
 THIRD ROW: Fred Babcock, Derry Clay, Jerry Moss, John Abazia, Jim Capelletti. SECOND ROW: Jim Gunder, Chuck Westfall, John Kline, Eugene Reeser, Jack Hennen. FRONT ROW: Wayne DeVore, George Dostal, Bud Grimm, Ken Horton, Bill Whitacre.





BACK ROW: Manager Dick Rutherford, Bob Vonada, Len DiLillo, Sidney Kershaw, Dick Follett, Ray Lamcha, Carl Smith. MIDDLE ROW: Coach Bob Cawrse, Gilbert Gray, John Schalois, Tony Beranek, Dick Kohagen, Jack Hansen, Tom Mormino, Frank Dohm. FRONT ROW: Harvey Peskin, Al Michalos, Howie Hanna, Floyd Kregenow, Dick Baldau, Bob Beatty, Galen Mack.



Michalos goes up and over.

## TRACK

Records do not always tell the whole story, and this is true of the 1952 track team. Although the team as a whole did not place high in Lake Erie League standings, there were many outstanding individual performances.

The '52 track squad had 13 members who earned letters. Honor Day last spring saw Galen Mack receive his third track letter, with Bob Beatty, Floyd Kregenow, and Alex Michalos earning their second letters. First year lettermen were Vaughn Angle, Dick Baldau, Len DiLillo, Dick Follet, Gilbert Gray, Fred

Hamilton, Howard Hanna, Harvey Peskin, and John Schalois.

Alex Michalos, piling up a total of 70¼ points, was Shaw's top performer in the '52 season. Alex won both the high and low hurdle events in L. E. L. competition.

Galen Mack, half mile and mile trotter, ranked second to Michalos in points scored.

Dick Rutherford and Karl Smith were the team's managers.



## LOOK WHAT THEY WORE IN THE GOOD OLD DAYS



Track team circa 1918.  
G.A.A. Hiking club circa 1933.  
Swimming team circa 1920.





ATHLETIC COUNCIL

- Janis Green ..... Volleyball
- Connie Sciortino ..... Baseball
- Sandy Dickerson ..... Life Saving
- Anne Crossley ..... Swimming
- Julie Hatch ..... Indoor Sports
- Diane Clay ..... Swimming
- Dolores Gerscheski ..... Basketball
- Evelyn Welniak ..... Basketball
- Carol Gibson ..... Baseball
- Kay Foxall ..... Volleyball
- Lois Neider ..... Riding
- Nancy Berry ..... Outdoor Sports
- Barbara Garwood ..... Modern Dancing

Not Pictured

- Janet Kathe ..... Volleyball
- Roseann Blakemore ..... Modern Dancing



**LIFE SAVING**

**BACK ROW:** Judy Keller, Barbara Barch, Nancy Carlson, Judy Randal, Sandy Dickerson. **FRONT ROW:** Sally Dunn, Joyce MacKenzie, Carolyn Hay, Anne Wills.

**JUNIOR SWIM TEAM**

Diane Clay, Sally Dunn, Emily Watkins, Sue Widlitz, Carol Sabrack, Carol Gibson, Barbara Ayre, Laura Moehl.





Cheesecake — 1925.

# SWIMMING

For some 25 years Shaw girls have been splashing around in the pool, regardless of the resulting wet hair and straight locks. Today on Tuesdays and Thursdays after school, G.A.A. takes over the swimming pool and members are free to enjoy its use.

The Swimming Show presented annually by the girls is the big event of the year. Special solo and group numbers are the result of many long and wet hours of practice.

This year the girls held an Interclass Swim Meet. Elected as team captains were Dorothy Michael for the seniors, Diane Clay for the junior team, and Sandy Brown for the sophomores. The junior team, pictured on the opposite page, was victorious in the varied meet of races, relays, and specialty numbers.

A class in Life Saving is held each spring, the graduates being eligible to act as life guards in any pool under Red Cross regulations.

## SYNCHRONIZED SWIMMING

Doris Meyner, Sandy Brown, Barbara Ayre, Sandy Simon, Gail Mentel, Nancy Berry, Eileen Mooney, Lee Wood, Sally Dunn, Anne Crossley, Diane Clay, Barbara Barch, Carol Sabrack, Sue Widlitz.





**RACK ROW:** Lois Neider, Gerry Goske, Janis Green. **MIDDLE ROW:** Diane Clay, Roseann Blakemore, Joyce MacKenzie, Carole Jablonski. **FRONT ROW:** Connie Sciortino, Nancy Berry, Sandy Dickerson, Sandy Simon.

## LETTER WINNERS

## VOLLEYBALL ALL-STARS

**BACK ROW:** Joyce MacKenzie, Janis Green, Sandy Brown, Lois Neider, Janet Kathe, Kay Foxall, Elaine Forkapa, Joanne Rayburt, Carole Jablonski. **FRONT ROW:** Sandy Dickerson, Anita Leicher, Evelyn Welniak, Nancy Blough, Joanne Palicka, Ginny McWhirter.





BACK ROW: Susan Marsh, Lee Wood, Lois Neider, Roseann Blakemore, Julie Hatch, Jan Ainsworth, Diane Clay. FRONT ROW: Elaine Forkapa, Carole Sabrack, Nancy Blough, Nancy Berry, Anita Leicher, Barbara Offenhauser, Martha Mueller.

## BASKETBALL CAPTAINS

BACK ROW: Julie Hatch, Elaine Forkapa, Janet Kathe, Dorothy Michaels, Joanne Grabert, Janis Green. FRONT ROW: Sandy Dickerson, Nancy Blough, Anita Leicher, Nancy Berry.

## OFFICIALS



## RIDING

"A saddle isn't the softest seat in the world, but it's one of the most enjoyable."

That's what the five girls pictured above can testify.

Inaugurated a few years ago, horse-back riding is now a regular part of the G.A.A. program available to all those who want it. Riders are classified as beginners, intermediate, or advanced.

On the days chosen for an outing the girls are driven out to Sleepy Hollow Riding Academy where they spend an hour or two, atop their favorite horses. (At least they try to stay atop them.) Each member receives 10 points for the 'trip.

Alice Henry, Arlene Taggart, Diane Clay, Lois Neider, Jean Rooks.



## MODERN DANCE

BACK ROW: Lucy Cirkova, Roseann Blakemore, Barbara Garwood, Virginia Brown. MIDDLE ROW: Dorothy Brazus, Harriet Dawson, Sally Dunn, Judy Keller. FRONT ROW: Nancy Berry, Kinette Cole, Betty Blankschaen.



# SHUTTLE ACKNOWLEDGEMENTS

Editor-in-Chief .....	Phyllis Friedman
Art Editor .....	Budd Lemmerman
Senior Editor .....	Francine Hasher
Undergraduate Editor .....	Judy Stuchul
Sports Editor .....	Allan Zambie
Advertising Manager .....	Judy Hoffman
Circulation Manager .....	Germaine Gibian
Photographers .....	Bob Blair
	John Tomcho
	Earl McNeilly
Art Staff .....	Ellen Jean Price
	Elizabeth Hunsicker
	Howie Hanna
	Mary Tsevdos
Writers .....	Sally Dunn
	Joyce Hovanec
	Auguste King
	Nancy Magnusson
	Janet Mendenhall
	Don Mixer
	Alan Singerman
	Larry Smith
	Pat Tulow
	Eileen Vajda
Typist .....	Donna Renton
Advertising .....	Anne Crossley
	Harriet Dawson
	Barbara Ierg
	Carole Jablonski
	Anola Schenck
Circulation .....	Barbara Barnard
	Ginny Conant
	Nancy Hartland
Bookkeeper .....	Carolyn Benson
Faculty Advisor .....	Bruce Holderbaum

The 1953 *Shuttle* Staff wishes to express its sincere appreciation to the administration, the faculty, and the students not mentioned by name who gave up study time or free time to work on this book. Without their help this book would not have been possible.



# UNDER CLASSMEN

ON THE opposite page you see sophomore Jerry Tucker looking pretty happy—even with all the books he'll have to read before he graduates. This section is an important one. Don't skip it. These are the faces that'll be around for a year or two. These are the faces that'll be up in the senior section pretty soon. These are the people you'll pass in the hall in '54 and '55. Look carefully, for somewhere among these faces are tomorrow's Student Council president, next year's football queen, and maybe even you.







CLASS OF  
JANUARY, 1954

John Abazia  
Neil Akins  
Jane Andall  
Vaughn Angle  
Astrid Barbins



Lois Bauer  
Bill Bennett  
Nancy Berrey  
Barbara Bourquin  
Loretta Bolden



Gail Bowden  
Jim Bozell  
Sharon Brumley  
Bob Bythway  
Gloria Cali



Jerry Carlton  
Edith Catanese  
Bob Cathcart  
Shirley Chiles  
Derry Clay



Bert Cliff  
Donna Corsillo  
Mary Lou Croft  
Armando DeFranco  
George DeMore



Owen Dixon  
Lillian Dohm  
Sally Dunn  
Ray Ferguson  
Ilene Firestone



Bill Gemlic  
Rolfe Hartwig  
Charles Holmes  
Joyce Hovanec  
Pat Kaburick



Martha Kaelin  
George Kalas  
Russell Knoeful  
Donna Kramer  
Curtis Lane





Barbara Last  
Lois Leverett  
Tom Lowery  
James Marinelli  
Charlene Matia



Gail Mentel  
Joan Missar  
Bob Morrison  
Joan Owen  
Gus Pallad



Archie Patrick  
Pat Plunkett  
Margaret Poiror  
Rollie Remley  
Carole Rothenberger



Anola Schenck  
Donna Schmidt  
Richard Small  
Merle Sobol  
Carol Spencer



Patricia Stansky  
Jean Starkloff  
Sylvia Testa  
Don Vidmar  
Mary Lou Wettrich



Mike Williamson  
Sue Winsor  
Lola Zuchegna  
Audrey Adams  
Mary Lou Adams



CLASS OF  
JUNE, 1954

Joanne Ahearn  
Elaine Ahern  
Robert Aiken  
Jan Ainsworth  
Charles Alexander



Betty Anderson  
Helen Andresky  
Mary Aszolina  
Barbara Ayre  
Joanne Baker





Arthur Barber  
Richard Barber  
Violet Barbey  
Robert Barclay  
Margaret Barnes



Dolores Bart  
Joanne Baumann  
Christine Beach  
Carol Beattie  
Anthony Beranek



Irene Bilinski  
Kathryn Blair  
Betty Blankschaen  
Helen Bliss  
Kenneth Bluhm



Harry Bolaney  
John Borthwick  
Gaylord Bradford  
Michael Bradford  
William Braum



Phillip Brown  
Marilyn Cabot  
Carol Campbell  
Doris Canon  
Ray Canzone



Joy Cappon  
Richard Carani  
Norman Cary  
Patricia Chambers  
Rita Chapman



Lois Clark  
Diane Clay  
Marvin Cohen  
Maxine Cohn  
Kenetta Cole



David Conner  
Louis Cowles  
Wayne Croft  
Marguerite Cusick  
Marianne Cusick





Dick D'Alessandro  
David Davis  
Larry DeNardo  
Sandy Dickerson  
Robert Dinallo



Joyce Dunlap  
Charles Eichler  
Jack Eismon  
Florence Elliott  
Larry Engman



Barbara Ensign  
Jane Evans  
Dick Farragher  
Donna Felger  
Diane Fellows



Sallie Finnie  
Carol Fligle  
Richard Follett  
Paul Forkapa  
Margo Foster



Kay Foxall  
Tony Francioso  
Ronald Frew  
Katharine Fullerton  
Judy Funk



Ronnie Garber  
Germaine Gibian  
Carol Gibson  
Joan Gleason  
David Glynn



Pete Golash  
Jackie Goldie  
Marion Goldman  
Muriel Gordon  
Lois Gorman



Geraldine Goske  
Donna Grahling  
Gail Gray  
Gilbert Gray  
Joan Gray





Jerry Green  
 Jerry Greenberger  
 Francis Gregory  
 Larry Griffith  
 Thomas Griffiths



David Grotefend  
 Marilyn Guffey  
 Nancy Halliday  
 Jack Hansen  
 Wesley Harris



Julie Hatch  
 Alice Henry  
 Marion Howard  
 Elizabeth Hunsicker  
 Dale Jackson



Marilyn Johnson  
 Ronald Jump  
 Ferne Kabat  
 Nancy Kalat  
 June Kapps



Jay Kasmark  
 Louise Kellat  
 Sydney Kershaw  
 Auguste King  
 Mary Kinney



Ed Kish  
 Norma Kish  
 Walter Klauss  
 Charles Kluster  
 Richard Kohagen



Kelvin Kramp  
 Robert Kraus  
 Gertrude Lass  
 Janet Leadbetter  
 Doris Leonard



Mary Lessner  
 James Linn  
 Joseph Lose  
 Dean Louis  
 Barbara MacEachron 98





Darlene Mapes  
Tom Marette  
Susan Marsh  
Dick Marshall  
Joyce Martin



Jack May  
Ruth McCall  
Joanne McConnell  
Sally McCrory  
Grace McDonald



Robert McKnight  
Roy Meyenberg  
Marilyn Miller  
Sally Miller  
Laura Moehl



Bill Monroe  
Tom Mormino  
Bruce Motter  
Jim Mueller  
James Nelson



Jeanne Nelson  
Nancy Nelson  
Carol Neylans  
Loretta Novacek  
Nora O'Boyle



Barbara Offenhauser  
Janey Olhava  
Roger Oswald  
Elaine Ott  
Tom Papouras



Dale Parch  
Janice Parker  
Donna Pease  
Emily Penfield  
Joyce Petrucelli



Charles Pfahl  
Joan Pranskevich  
Ellen Jean Price  
Kay Pritchard  
Carol Provins





Claire Dell Pugh  
Ronald Rawley  
Sally Reynolds  
John Ridenour  
Ann Robinson



Sam Rondini  
Virginia Rose  
Jerry Rundt  
Josepha Rust  
Richard Rutherford



Carole Sabrack  
Mimi Sala  
Shirley Schatz  
Richard Schmolz  
Josephine Scibana



Connie Sciortino  
Sandra Settles  
Paul Shaver  
Suzanne Sherry  
Sandra Simon



Edith Sinese  
Sally Snyder  
William Soles  
Fred Sterle  
Elaine Stevens



Nancy Struggles  
Judy Stuchul  
Dolores Sutkavtis  
Arline Taggart  
Jim Thompson



Eugene Torrence  
Mike Trivisano  
Viola Turner  
Eileen Vajda  
Bob Vonada



Lucy Wallace  
Tom Walworth  
Bill Ward  
Emily Watkins  
Clarence Wehling







Evelyn Welniak  
 Bill Whitacre  
 Dave Whitehorn  
 Susan Widlitz  
 Shirley Wiseman



Jeanne Witter  
 Ruth Wolfe  
 Bob Young  
 Janet Zahl



CLASS OF  
 JANUARY, 1955

Shirley Anderson  
 Charles Armao  
 Howard Arnoff  
 Joanne Bachleder  
 Bill Batton



Beverly Beitzel  
 Nick Bucceri  
 Patrick Burke  
 David Campbell  
 Ruth Carlson



Angela Catanese  
 Ronald Cola  
 Virginia Conant  
 Joan Cosgrove  
 Paul Cotner



Ronald Crane  
 Jill Dreifort  
 Gay Elgin  
 Richard Fenitzer  
 Henry Fischer



Carol Frantz  
 Richard Freedman  
 Nancy Gabriel  
 Keith Gallagher  
 Virginia Gerlosky



Dale Gerscheski  
 Diane Gerscheski  
 Delores Giancola  
 Betty Lou Gilmore  
 Georgene Groynom





Jim Gunder  
Louis Hart  
John Henderson  
John Hennen  
Judith Herndon



Sidney Herzig  
Eleanor Holan  
Carol Honroth  
Joy Hossel  
Anne Hunter



Thomas James  
Ted Kellerhall  
Wanda Ketron  
Bill Kifer  
Mark Kissack



Betty Kleinshtrot  
Adrienne Landis  
William LeMaster  
Bruce Lemieux  
Marietta Lograsso



Edith Luca  
Albert Lupatin  
Bill McCallum  
John Martin  
Lee Roy Mikut



Helen Mischka  
Loretta Morrell  
Alan Morrison  
Gary Nank  
Peter Ness



Carol Norwick  
Patrick Pace  
Edwin Panesky  
Judith Parkhurst  
Joan Patterson



James Peak  
Sidney Peterson  
Allan Phillips  
Judith Randall  
Joy Reinhard





Helen Rendlesham  
 Diana Reynard  
 Joyce Rondini  
 Carol Ronke  
 Rosemary Ryskovich



Shirley Samtur  
 John Schalois  
 Elizabeth Scupino  
 Marjorie Small  
 Karl Smith



Barbara Stanick  
 Marilyn Stone  
 Tom Thompson  
 Donna Thoss  
 Beverly Toth



Richard Traci  
 James Weber  
 Pat Webster  
 Margaret Wheland  
 Jennifer Williams



Arlene Wilson  
 Charlotte Wormald  
 Anthony Zampino  
 Harry Alexander  
 James Althans



CLASS OF  
 JUNE, 1955

Sue Ammerman  
 Dean Apple  
 Don Asuma  
 Ieva Auzins  
 Dorothy Bacon



William Balch  
 James Barch  
 John Barkovich  
 Barbara Barr  
 Barbara Beercheck



Myrna Benke  
 Mildred Beres  
 Jane Berger  
 Anthony Bevacqua  
 Joanne Beyvl





Nancy Blough  
 Lucille Boggs  
 Charles Bonnell  
 Evelyn Bosky  
 Arlene Brelo



Bob Broscheid  
 Charles Broscheid  
 Joan Brown  
 Sandra Brown  
 Carol Butterfield



Nancy Cadwell  
 Don Camlin  
 Molly Caplin  
 Cathy Caporale  
 William Carey



Patricia Carney  
 Laura Carr  
 Mike Ciomek  
 Donald Clark  
 Dorothy Clark



Warren Clucker  
 Pat Condon  
 Robert Cooper  
 Nancy Crall  
 Ruby Crosten



George Crumbaker  
 Ken Czerr  
 Dolores Dacobellis  
 Marjorie D'Ambrosia  
 Bob Dawson



Marilyn Decker  
 George DeFilippi  
 Norman Delsanter  
 Margaret Delvigs  
 Joseph Dempsey



Bob Deward  
 Carol Dietrich  
 Bill Dignin  
 Rosemary Dohm  
 Joanne Douglas





Curtis Downing  
Thomas Drake  
Jack Dreifort  
John Dunlap  
Barbara Dwyer



Barbara Early  
James Ellis  
Forrest English  
Donald Felice  
Marylyn Ferguson



Seba Ferlito  
Horst Fischer  
Robert Fish  
Elaine Forkapa  
Charles Foss



Leila Furry  
George Garland  
Enid Gerson  
Bobbie Jean Gibson  
Bob Gibson



Betty Golaboff  
Elizabeth Greenman  
Leona Gregory  
Eveline Grossman  
Marta Gunder



Elliot Gussow  
Charlene Hall  
Nancy Hall  
Christine Hamilton  
Stephen Havas



Wayne Hayes  
Nancy Henderson  
Diane Henry  
Marilyn Hicks  
Alfred Hoffmann



Barbara Hook  
Violet Howatt  
Jay Hunton  
Carol Hurschka  
Ruth Hutter





Rosemary Inzano  
James Janek  
Robert Jennings  
Barbara Johnson  
June Johnson



Shirley Johnson  
Gloria Jones  
Betty Kerrigan  
John Kessler  
Paul King



James Kish  
James Kitson  
Nina Rae Klusker  
Nancy Knowles  
Doris Krause



Russell Krinsky  
Nancy Kromer  
James Kutcher  
Dorothy Lakins  
Richard Lamdon



Larry Landis  
Frieda Laubaugh  
James Leach  
Anita Leicher  
Lois Lewis



Barbara Lexenberg  
Ronald Linamen  
Ann Lindsay  
June Lose  
Marie Lustig



Shirley McCarthy  
Ronald McCoy  
Leah McHarg  
Nancy McNamara  
Genevieve McWhirter



Virginia Mackell  
John Magazine  
James Marshaus  
Grace Martin  
Joan Martin





Katherine Mason  
 Frank Massaro  
 Doris Anne Mayner  
 Virginia Mays  
 Sandra Mellen



Betty Meola  
 Catherine Miller  
 Thomas Milligan  
 Bob Mills  
 Paul Missar



Phyllis Moyer  
 Martha Mueller  
 Gene Myers  
 Sterling Neale  
 Don Newbury



David Nokes  
 Joe Pavlos  
 Tom Peeling  
 Virginia Penfield  
 Tom Perkins



David Peters  
 Donna Peterson  
 Donna Mae Peterson  
 Ken Peterson  
 Sue Peterson



Marilyn Pfeffer  
 Mary Pirro  
 Antoinette Pompignano  
 Catherine Poole  
 Darlene Posey



Ruth Pringle  
 Clara Pudvan  
 Edward Putnan  
 Nancy Radis  
 Miriam Raupach



Steve Renton  
 Judith Ridenour  
 Rose Mary Rogers  
 Jean Rooks  
 Kurt Rusch





Kenneth Ryder  
Jerry Sapatka  
Rudolph Sarich  
Tom Schafer  
Ken Schiring



Paul Schupp  
Ronald Schuster  
Herbert Selwyn  
Nancy Sheppard  
Leonard Short



Rella Silverman  
Barbara Skelly  
Anton Skojac  
Brian Smiar  
Renfrew Spence



Fred Spurgeon  
Tom Staimpel  
Donna Stamm  
John Stewart  
Jerry Sullivan



Donna Sweigert  
Laura Tatone  
Barbara Thacker  
Evelyn Thomas  
Harold Thornhill



Gary Tigges  
John Tomcho  
Jerry Tucker  
Norman Ullemeyer  
Mary Lois Uphoff



Gloria Vara  
Joanne Varndell  
Mary Ann Vaughn  
Chuck Vekos  
Pearl Virostko



James Vogel  
Judy Wachter  
Mary Lou Walton  
Ronald Warshawsky  
Linda Washner







Lee Webb  
Harvey Weiner  
Joe Weinhofer  
Lee Wellman  
Dave Welter



Marilyn Wesbecher  
John Whitehorn  
Larry Whitney  
Arnold Wiener  
Connie Wiler



Duane Williams  
Peggy Wintersteller  
Kenneth Wolfson  
Sandra Wright  
Joan Zahig



CLASS OF  
JANUARY, 1956

Randy Abbey  
Thomas Allen  
Larry Ambrose  
Dave Arnett  
Lillian Barbey



Nancy Beattie  
Joan Carol Bode  
Richard Brazus  
Priscilla Burton  
Mildred Carlton



Eliseo Cefaratti  
Joanne Chastain  
Guilford Crocker  
William Croft  
David Cundy



Katheryn Daugherty  
Richard DeMarco  
Robert Eastman  
Vonda Eisman  
Bill Elliot



Nancy Erickson  
Leslie Farnsworth  
Blaine Foreman  
Barbara Fracasso  
James Gardner





Bruce Gleason  
Bill Glover  
Dolores Gonzalez  
John Good  
Lynn Gottron



Anthony Graham  
Bertha Grano  
Ralph Green  
Kay Gross  
James Haynik



Susan Henry  
Patricia Hoff  
Terry Iammarino  
Frank Kettlewood  
David Knapp



Carol Kraft  
Mary Ann Lee  
Carol Lubinsky  
Larry Lucarelli  
Eli Mahler



Angelo Marikis  
Beverly Martin  
Marcia Maxim  
Don McCoy  
Connie McCurdy



Tom McHugh  
Joseph McNeilly  
John Milewski  
Leslie Miller  
Ken Milton



Jean Mowry  
James Neylans  
Patricia O'Hara  
Jane Parker  
James Patterson



Carol Peters  
Frank Petrucci  
Coleman Posard  
Hazell Powell  
Ralph Pratt





Marlene Prove  
William Provident  
Sally Rapp  
Jerry Rawley  
Katheryn Regal



Allen Roth  
Jack Rowan  
Lucille Saunway  
Ronald Schwartz  
Karen Sebransky



Arthur Shank  
David Small  
James Smircina  
Linda Smith  
Robert Smoyer



William Strack  
Roberta Tratka  
Susan Thompson  
Terry Thompson  
David Tichy



Marie Trentenelli  
Bruce Turner  
Rimas Valaitis  
Janet Vyse  
Bill Welch



Alberta Wilkin  
Barbara Williams  
Larry Wilson  
Ronald Wood



# SENIOR INDEX

## JANUARY SENIORS

— A —

**BOB ALBRECHT**  
J.V. Basketball; Intramural Basketball; Football;  
Case; Engineering.  
**RICHARD ALTEMUS**  
Case; Aviation Engineering.  
**KATHLEEN ANDERSON**  
G.A.A.; Friendship, Sr. Friendship Program Chair-  
man; Service Club; Swimming Show; Football  
Queen Attendant; Fashion Coordinator.  
**SHELDON APPLE**  
Tennis; Intramural Basketball; Finished at John  
Hay.

— B —

**TOM BABBITT**  
Movie Operator; Army.  
**CONNIE BLAIR**  
G.A.A., small "S"; Friendship, Service Club; Swim  
Show; College Club; Personnel work.  
**ROSEANNE BLAKEMORE**  
G.A.A., small "S"; Athletic Council; Friendship,  
Service Club; Swimming Show; Black-Red Revue;  
Kent State; Secretarial training.  
**TOM BLANCHARD**  
Camera Club; Student Council; N.H.S., Treasurer;  
Senior Class President; Case, Mechanical Engi-  
neering.  
**VIRGINIA BROWN**  
G.A.A.; Friendship; Band; Girls' Chorus; Secretary.

— C —

**JOHN CARLSON**  
Football; Intramural Basketball; Engineering.  
**NANCY CARLSON**  
Friendship; G.A.A.; Life Saving; Band; Orchestra;  
Choir.  
**TOM CHEVAKO**  
Intramural Basketball; Fenn; Metallurgist.  
**PATRICIA CIOMEK**  
Senior Friendship; Black-Red Revue; Choir; Girls'  
Glee Club; Transferred from Lincoln; Interior  
Decorator.  
**LUCY CIRKOVA**  
Choir; Friendship; G.A.A.; Jr. Council on World  
Affairs; Baldwin-Wallace; Art.  
**DON CLARK**  
University of Kentucky.  
**DONNA CLARK**  
G.A.A.; Life Saving; General Office Work.  
**ED CONWAY**  
Intramural Basketball; Shuttle; Rifle Club; Camera  
Club; Dramatic Club, Treasurer; Kent State; Law.  
**EVELYN COOPER**  
College Club; Friendship; Observer; Western Re-  
serve; Government Stenographer.

— D —

**ERVIN DAVIES**  
Football; Ohio U.; Teacher.  
**CLAUDIA DELLINGER**  
Friendship; Secretary.  
**JILL DENISON**  
Friendship; Service Club; G.A.A.; Choir; Octet;  
Dramatic Club, President; Student Council; Swim  
Show; Black-Red Revue; College Club; N.H.S.,  
Secretary; Ohio Wesleyan; Dramatics Teacher.  
**FRANK DOHM**  
Track Team; Bowling Team; Cross Country.  
**GENE DONALDSON**  
Ohio Northern University; Pharmacy.  
**GERALD DOUGHERTY**  
Student Council; Hi-Y, Secretary; College Club;  
N.H.S., Vice President; Orchestra; Band, President;  
Case; Chemical Engineering.  
**JAMES DURKIN**  
Football; Ohio State; Carpentry.

— F —

**KENNETH FETHEROFF**  
College Club; N.H.S.; Case; Metallurgical Engineer.  
**DOLORES FISCHER**  
G.A.A.; Friendship; Shuttle Solicitor; Black-Red  
Revue; Western Reserve; Secretary.  
**CARL FREDERICK**  
Engineer.  
**LAUREN FREDERICK**  
**RONALD FROELICH**  
N.H.S.; Orchestra; Movie Operator; Jr. Kiwanian;  
Case; Electronic Engineering.

— G —

**DAVID GASCOIGNE**  
Intramural Basketball; Hi-Y; Kent State.  
**MICHAEL GAY**  
Shuttle Solicitor; N.H.S., President; Student  
Council; College Club; Jr. Kiwanian; Secondary  
Education.  
**BUD GRIMM**  
Football; Basketball; Baseball; Student Council;  
Vice-President Senior Class.  
**TONY GIORDANO**  
Football; Basketball; Baseball; Monitor Captain.  
**HENRY GIUNTA**  
Western Reserve; Doctor.

— H —

**DONNA HAAS**  
Friendship; Service Club; Stage Crew; G.A.A.;  
Girls' Glee Club, President; Kent; Office Work.  
**CHARLES HAGBERG**  
Swimming; General Motors Institute; Engineering.  
**HOWARD HANNA**  
Student Council; Football; Track; Shuttle; Stage  
Crew; Intramural Basketball; Kent State; Commer-  
cial Artist.  
**MARK HANNAN**  
Football; Cabinet Maker.  
**CAROLYN HAY**  
Friendship, Cabinet; Service Club; Future Nurses'  
Club, Program Chairman; Life Saving; Band;  
G.A.A.; N.H.S.; St. Luke's Hospital; Nurse.  
**JOAN HERSHBERGER**  
G.A.A.; Friendship, President; Service Club; Stage  
Crew; Girls' Glee Club; Kent; Social Work.  
**FRANK HOLAN**  
Transferred from Benedictine; Southern California;  
Chemist.  
**KEN HORTON**  
Canteen, President; Baseball; Basketball; Football.  
**HARRY JOHNSON**  
Band; Swimming; Movie Operator; Senior Life  
Saving; Hiram; Minister.

— K —

**JANET KATHE**  
G.A.A.; Athletic Council, President; College Club;  
Friendship, Jr. Soph. President, Senior, Secretary-  
Treasurer; Service Club; N.H.S.; Football Queen;  
Secretary-Treasurer of Senior Class; Purdue; Interior  
Decorator.  
**PAT KENNEDY**  
Friendship; Black-Red Revue; Choir; Glee Club;  
Swimming Show; G.A.A.; Transferred from  
Heights; Kent; Business Career.  
**TOM KISSACK**  
Football; Student Council, Treasurer, Vice Presi-  
dent, President; N.H.S.; Intramural Basketball;  
Jr. Kiwanian; Case; Engineer.  
**GEORGEAN KRANTZ**  
G.A.A., small "S"; Friendship; Service Club;  
Shuttle Solicitor; Girls' Glee Club; Kent; Secre-  
tarial Work.  
**MARK KRAVITZ**  
Ohio State; Accountant.  
**GEORGE KRZEWINSKI**  
Bowling Team; John Carroll; Engineer.

— L —

**RAY LAMCHA**  
Football; Track.  
**WARREN LEDGER**  
Band; Choir; Toledo; Pharmacy.  
**RITA LORENZETTI**  
Friendship; Chorus; Secretary.

— M —

**JOYCE MACKENZIE**  
G.A.A.; Swimming Show; Life Saving; Friendship,  
Cabinet; Service Club; College Club; Jr. Council  
on World Affairs; Purdue.  
**NANCY MARRONE**  
Friendship, Secretary-Treasurer; G.A.A., small  
"S"; Monitor Captain; Kent State; Secretary.  
**ISABEL MASON**  
G.A.A.; Life Saving; Modern Dancing; Chorus;  
Secretary.  
**BURTON MAXIM**  
Ohio State; Agriculture.  
**PHYLLIS MCCARTER**  
G.A.A.; Swim Show; Friendship, Vice President;  
Secretary.  
**BARBARA MCKNIGHT**  
Whirl; Choir; Stage Crew; Transferred from  
Glenville; Cleveland Institute of Art; Interior  
Decorating.  
**BETTY MCMASTER**  
G.A.A.; Friendship; Secretary.  
**JACK MENTEL**  
Kent; Commercial Art.  
**FRED MUELLER**  
Hi-Y, Secretary; Shuttle; Student Council; Monitor  
Captain; Duke; Minister.  
**ROBERT MYERS**  
Baseball; Basketball; Band; Salvation Army Train-  
ing College; Minister.

— N —

**JIM NOBLE**  
Baseball; Fenn.

— P —

**HARRY PALMER**  
Repair and Set-up International Business Machines.  
**CATHERINE PETERS**  
G.A.A.; Cheerleader; Friendship, Cabinet; Orches-  
tra; String Ensemble; Ohio State; Music.  
**LOUISE PINARDO**  
Student Council; G.A.A.; Friendship; Long-distance  
Telephone Operator.

— R —

**HELEN REID**  
Friendship; Service Club; G.A.A.; Kent.  
**EDWIN ROTH**  
Student Council; Intramural Basketball; Monitor  
Captain; Prom Committee; N.H.S.; Western Re-  
serve; Doctor (M.D.).  
**ROGER ROWE**  
Ohio State.

— S —

**RONALD SAPAKA**  
Fenn.  
**JACK SCHUSTER**  
Transferred from Woodrow Wilson High, Youngs-  
town; Navy. Graduated in June.  
**LOUIS SCHMIDT**  
Intramural Basketball; Rifle Club; N.H.S.; Western  
Reserve; Doctor.  
**GEORGE SCHULTZ**  
Football; Play Production; Intramural Basketball;  
Ohio State; Salesman or Construction.

CHARLES SOLOMON  
Student Council; N.H.S.; Case; Engineer.

DOLORES SCHWIMMER  
G.A.A.; Friendship; N.H.S.; Ohio Wesleyan; Personnel Director.

DENNIS SMITH  
Band; Life Saving; Dennison; Personnel Management.

JEAN SOJIBA  
G.A.A., small "S"; Swimming Show; Life Saving; Friendship; Stage Crew; Kent; Secretary.

DON SOPKO  
Football; Intramural Basketball; Track; Carpenter.

DORIS THOMPSON  
G.A.A., small "S"; Friendship, Program Chairman; Service Club; Swimming Show; Secretary.

CAROL VITALE  
Friendship; G.A.A.; Kent; Secretary.

ROBERT WAGNER  
Football.

MYRA WALKER  
Friendship; G.A.A.; William and Mary; Teacher.

JOEL WEIL  
Football; Student Council; Kent; Salesman.

SALLY WILLIAMS  
Friendship; Service Club; G.A.A.; Stenographer.

ANNE WILLS  
Orchestra, Librarian; Choir; G.A.A.; Life Saving; College Club; Friendship; Muskingum; Teacher.

## JUNE SENIORS

— A —

JOE ALEXANDER  
Student Council; Case; Engineer.

TONY ARMAO  
Band; Orchestra; Track; Intramural Basketball; Ohio State; Government Agent.

NEIL AUSTIN  
Baseball; Navy.

— B —

FRED BABCOCK  
Baseball; Ohio State; Federal Agent.

STEVE BARBEY  
Assistant Manager of Fisher Foods.

BARBARA BARCH  
Friendship; College Club; G.A.A.; Band, Librarian; Flora Stone Mather; Dietician.

BARBARA BARNARD  
Friendship, Cabinet; G.A.A.; Service Club; *Sbustle* Staff; N.H.S.

JOANNE BATSON  
Whirlo; Friendship; Service Club; Secretary.

LOIS BAUMGARTNER  
Friendship; Secretary.

CAROLYN BENSON  
Friendship; Whirlo, President; Junior Council on World Affairs; *Sbustle* Staff.

DAVE BERGER  
Intramural Basketball; Whirlo; Movie Operator; Ohio State; Lawyer.

FRANCES BIANK  
Secretary.

BOB BLAIR  
*Sbustle*; Stage Crew; Intramural Basketball; Kent State; Photographer.

AUDREY BORTNER  
Friendship; G.A.A.; Service Club; Choir; Typist.

WARREN BOWER  
Student Council; Case; Electrical Engineer.

BARBARA BRADBURY  
G.A.A.; Senior Friendship.

MELVYN BRAM  
Baseball; Transferred from East High School; Ohio State; Doctor.

DOROTHY BRAZUS  
Friendship; Girls' Chorus; Modern Dancing; Seamstress.

RALPH BRIGGS  
Intramural Basketball; Whirlo; Tennis, Captain; Ohio State; Mechanical Engineering; Student Council.

PHILIP BRUSSEE  
Movie Operator; Mechanic.

BEVERLY BYERS  
Friendship; G.A.A.; Varsity Cheerleader; Student Council; Monitor Captain; Baldwin Wallace.

— C —

JOHN CARLOZZI  
Ohio State; Office Manager.

LOUIS CARLOZZI  
Ohio State; Navy.

RAY CEFARATTI  
Transferred from Los Alamos High School, Los Alamos, New Mexico; Tool and Diemaker.

JIM CHILDERS  
Case; Engineer.

RITA CIASULLO  
G.A.A.; Friendship; Swimming Show; College Club; Bowling Green; Private Secretary.

MONA CICCOTTI  
Choir; Friendship; Airline Stewardess.

GEORGE CLAPPAS  
Navy.

VIRGINIA CLEEVE  
G.A.A.; Friendship; Choir; Swimming Show; Commercial Field.

BOB COATES  
Dramatic Club; Hi-Y; Choir; Junior Council on World Affairs; Future Teachers' Club; Western Reserve; Teacher.

JOHN COLACARRO  
Student Council; Monitor Captain; Hi-Y; Miami; Business.

SALLY COLCHIN  
Dramatic Club; Friendship; Choir; Glee Club; G.A.A.

KATHLEEN CONWAY  
Friendship; G.A.A.; Choir; Service Club; Secretary.

ANNE CROSSLEY  
Friendship; G.A.A.; Athletic Council; *Sbustle* Staff; Carelton College; Social Work.

JERRY CROWLEY  
Monitor Captain; Transferred from Benedictine; Texas Agriculture and Mining College; Military Career.

SALLY CUMMINS  
College Club; Friendship; *Sbustle* Staff; Bowling Green; Elementary School Teacher.

— D —

CARL D'AMBROSIA  
Sophomore Basketball; Intramural Basketball; Mechanic.

RICHARD DASSEL  
Band; King's Point Maritime Academy; Officer on a Merchant Vessel.

HARRIET DAWSON  
Orchestra; College Club; G.A.A.; Future Nurses' Club; Friendship; Service Club; Dramatic Club; *Sbustle* Staff; Baldwin Wallace; Nursing or Home Economics.

MARILYN DEMAYO  
Cheerleader; Whirlo; Friendship; G.A.A.; Secretary.

WAYNE DEVORE  
Baseball; Football; Basketball; Hi-Y; Ohio University.

LEONARD DIILLO  
Football; Baseball; Track; Student Council, Treasurer and Vice President, President; Canteen; Intramural Basketball; Basketball; Junior Kiwanian.

DICK DIRITSKY  
Tennis; Intramural Basketball; University of Southern California; Engineer.

FLOSSIE DODSON  
G.A.A.; Choir.

GEORGE DOSTAL  
Football; Basketball; Baseball; College; Football Coach.

JANET DUNLAP  
Friendship; G.A.A.; Service Club; Whirlo; Fenn; Draftswoman.

— E —

CAROL EATON  
Friendship; Band; Orchestra; G.A.A.; N.H.S.

— W —

DAVE EDISON  
Choir; Transferred from Heights High; Factory.

WILMA ENKLER  
Friendship; Whirlo; Orchestra; Secretary.

— F —

ELIZABETH FISHER  
G.A.A.; Choir; Dramatic Club; Miami; Artist.

FAY FISHER  
G.A.A.; Friendship; College Club, Future Nurses' Club; St. Luke's Nursing School; Nursing.

RONALD FISHER  
Transferred from Jacksontown High School, Jackson, Ohio; Miami; Physical Education Instructor.

GARY FOX  
Hi-Y; Stage Crew; Ohio University; Salesman.

PHYLLIS FRIEDMAN  
Student Council; *Sbustle*, Editor-in-Chief; *Observer*; Editor-in-Chief; College Club, President; N.H.S.; College; Elementary Education.

NANCY FROEHLICH  
Transferred from John Hay High School; Choir; Eastern Nazarene College; Teaching.

RICHARD FROEHLICH  
College Club; Hi-Y; Intramural Basketball; College.

ROBERT FURLONG  
Football; Transferred from Cathedral Latin; Western Reserve; Insurance Salesman.

RAYMOND GALLAGHER  
Football; University of Southern California.

— G —

RALPH GANG  
Hi-Y; Intramural Basketball; Movie Operator; Lawyer.

BARBARA GARWOOD  
G.A.A.; Athletic Council; Dramatic Club; Major-ette; Friendship.

ANNA MAE GERO  
Office Job.

DOLORES GERSCHESKI  
G.A.A.; Athletic Council; Friendship; Choir; Swimming; Show; Stenographer; N.H.S.

FRANK GILLESPIE  
Intramural Basketball; Western Reserve.

SANDY GOCHENAUR  
G.A.A., small "S"; Friendship, Cabinet, Junior Friendship Program Chairman; College Club; Service Club; College; Elementary Education.

MARTIN GOLDFARB  
Intramural Basketball; Ohio State; Pharmacist.

NANCY GOOD  
Friendship, Cabinet, Home Room Chairman; G.A.A.; College Club; Ohio Wesleyan; Elementary Education.

JOANNE GRABERT  
G.A.A.; Swimming Team; Service Club; Friendship; Future Nurses' Club; St. Luke's Nursing School; Nursing.

JANIS GREEN  
G.A.A., small "S", large "S"; Student Council; N.H.S.; Athletic Council, Secretary-Treasurer; Friendship, Vice-President; Service Club; College Club; Football Queen Attendant; College; Home Economics.

JACK GREENBERG  
Tennis Team; Whirl; Ohio State; Certified Public  
Accountant.  
GEORGIEANN GUMTO  
Band; Choir; Octet; G.A.A.; Friendship.

— H —

BARBARA HALL  
Business Career.  
FRED HAMILTON  
Track; Cross Country; Hi-Y, Vice-President; Col-  
lege Club; Dramatic Club; Band; Choir; Ohio  
University; Insurance Agent.  
STEVE HAMILTON  
Transferred from Cathedral Latin; John Carroll.  
ELLIOTT HAMMERLE  
Choir; Fenn; Chemist.  
MIAMI HANSON  
Observer Staff; *Sbustle* Staff; G.A.A.; Glee Club;  
Journalism.  
NANCY HARTLAND  
Friendship; *Sbustle* Staff; G.A.A.; Choir; N.H.S.;  
Kent.  
FRANCINE HASHER  
*Sbustle*, Senior Editor; *Observer*; Friendship;  
Junior Council on World Affairs; Dramatic Club;  
Flora Stone Mather; Journalism.  
MARGARET HERBST  
G.A.A.; Senior Friendship; Transferred from  
Annetenschule, Germany; Kent; Secretary; Col-  
lege Club; Modern Dancing.  
PRUDIE HESCHE  
G.A.A.; Friendship; Swimming Show; Miami.  
JUDY HOFFMAN  
Friendship; G.A.A.; Choir; *Sbustle*, Advertising  
Editor; *Observer*, Exchange Editor; Dramatic Club;  
Junior Council on World Affairs; Miami; Pub-  
licity and Advertising.  
MARILYN HOFFMAN  
G.A.A.; College Club; Friendship; Miami.  
IRENE HOUGLAND  
Friendship; Whirl; Chorus; G.A.A.; Service Club;  
Typist.  
KAY HUGHES  
Waves.  
ALICE HUSTON  
Friendship, President of Junior-Sophomore, Senior  
Cabinet; College Club; Canteen; G.A.A.; Service  
Club; College.

— I —

BARBARA IERG  
Friendship, Cabinet, Vice-President; Service Club;  
G.A.A., small "S"; Dramatic Club; College Club;  
Ohio Wesleyan; Airline Hostess.  
RONALD ISAACSON  
Hi-Y; Stage Crew; Whirl; Miami; Traveling  
Salesman.

— J —

WILMA JABOCK  
G.A.A.; Friendship; Ohio University.  
CAROLE JABLONSKI  
Friendship; College Club; G.A.A.; *Sbustle*; Swim  
Show; Michigan University; Teacher.  
BETTY JONES  
G.A.A.; Friendship, Secretary-Treasurer of Sopho-  
more; Swim Show; Bowling Green.  
ELAINE JUMP  
Transferred from Heights High; College.

— K —

DOROTHY KASE  
Friendship; Whirl; Chorus; Nurse.  
GORDON KELLER  
Hi-Y, Treasurer; College Club; Intramural Basket-  
ball; College; Business Administration.  
JUDY KELLER  
Junior Council on World Affairs, President;  
Friendship; College Club, Treasurer; *Sbustle*,  
Activities Editor; Student Council; G.A.A.; Dra-  
matic Club; *Observer*; Swim Show; N.H.S.;  
College.

CHARLES KELLEY  
Choir; Navy.  
ROBERT KENT  
Football; Baseball; Telephone Installer.  
JOHN KLINE  
Track; Football; Baseball; Intramural Basketball.  
LOIS KRAMER  
G.A.A.; College Club; Future Nurses' Club; Trans-  
ferred from Republic High School; Bowling Green;  
Elementary Education.  
FLOYD KREGENOW  
Basketball; Track; Student Council; N.H.S.; Moni-  
tor Captain; Baseball; Junior Kiwanian; Class  
President; College.

— L —

LAVONNE LADD  
Transferred from Colorado Springs High, Colorado.  
BUDD LEMMERMAN  
Band, President, Vice-President; Choir; College  
Club; Dramatic Club, Treasurer, Vice-President,  
President; Hi-Y, Vice-President; *Sbustle*, Art Edi-  
tor; Intramural Sports; Drum Major; Oberlin;  
Junior Kiwanian.  
MARGARET LEONHARDT  
G.A.A.; Future Nurses' Club; Senior Friendship;  
Transferred from Berea High; St. Luke's School  
of Nursing; Registered Nurse.  
PHYLLIS LOWE  
G.A.A.; Friendship; Commercial Work.  
ROY LUNDSTROM  
Stage Crew, Manager; Monitor; Woodworking  
Shop.  
BETTY LUTZ  
Chorus; Transferred from Niagara Falls High  
School; Stenographer.  
SHIRLEY LYTLE  
Band; Ohio University; Elementary Education.

— M —

NANCY MACKAY  
G.A.A.; Senior Friendship; Service Club; Trans-  
ferred from Brush; Receptionist.  
NANCY MAGNUSON  
Friendship; Band; Choir; Orchestra; Dramatic  
Club; *Sbustle*; Northwestern, Music.  
JOSEPH MANCINI  
Track; Basketball; Hi-Y; Intramural Basketball;  
Ohio State; Navy.  
JOHN MANNING  
Cross Country; Transferred from Cathedral Latin;  
Duquesne; Scientist.  
TOM MARSHALL  
Junior Council on World Affairs, Vice President;  
College Club; N.H.S.; Case; Electrical Engineer.  
JOYCE MARTIN  
Friendship; G.A.A.; Majorette; Typist.  
GLORIA MARVIN  
Band; Choir; Orchestra; Friendship; Oberlin;  
Music Director.  
TED MATHEWS  
BONNIE McCUTCHEON  
G.A.A.; *Sbustle*; Choir; Chorus; Student Council;  
Friendship, Secretary-Treasurer; Service Club; Col-  
lege Club; Miami; Home Economics.  
TOM MCGONAGAL  
Transferred from Holy Name; Navy.  
LOUISE MCGREW  
String Ensemble; G.A.A.; Orchestra, Librarian;  
College.

JANET MCKER  
Choir; Practical Nurse.  
EARL MCNEILLY  
Football Manager; Monitor Captain.  
JANET MENDENHALL  
Friendship, Secretary-Treasurer; College Club,  
Secretary; G.A.A.; *Sbustle*; Service Club; Chorus;  
Miami; Airline Hostess.  
DOROTHY MICHAEL  
Friendship, Cabinet; G.A.A.; Choir; Dramatic  
Club; College Club; Service Club; Senior Life  
Saving; Ohio Wesleyan; Teacher.  
ALEX MICHALOS  
Football; Track; Wooster; School Teacher.  
JEAN MILEWSKI  
G.A.A.; Canteen, Vice President; Friendship, Vice  
President; College Club; N.H.S.; Cincinnati Uni-  
versity.  
CHARLES MILLER  
Transferred from Dillonvale; Machinist.

ED MILLER  
Muskingham; Doctor.  
EDDIE MIMIDES  
Basketball; Hi-Y; Baseball; Ohio State; Draftsman.  
DON MIXER  
*Observer*; *Sbustle*; Intramural Sports; Bowling  
Green.  
EILEEN MOONEY  
Friendship, President, Cabinet; Canteen; Swim  
Show; College Club; G.A.A.; Student Council;  
University of Michigan.  
HOWARD MORSE  
GERALD MOSS  
Baseball; Student Council; Intramural Basketball;  
Ohio University.

— N —

THERESA NARDOIA  
G.A.A.; Friendship; *Sbustle*, Secretary.  
LOIS NEIDER  
G.A.A.; Athletic Council; Artist.

— P —

DAVID PADEN  
Football; Track; Intramural Basketball; Hi-Y; Red  
Cross Disaster Committee, President; Ohio State;  
Salesman.  
JOANNE PALICKA  
Friendship, Program Chairman, Cabinet; Service  
Club; G.A.A.; Dramatic Club; Executive Council;  
College Club; Bowling Green; N.H.S.  
WILLIAM PARKHURST  
Football; Intramural Basketball; Student Council,  
Treasurer; Monitor Captain; Springfield University;  
Y.M.C.A. Work.  
DOROTHY PATTERSON  
Secretary.  
RAYMOND PAULI  
Carpenter.  
DOROTHY PAYNE  
Whirl; Band; Orchestra; Friendship; G.A.A.;  
Western Reserve; Nursing.  
HARVEY PESKIN  
Football; Track; Intramural Basketball.  
BARBARA PETERS  
G.A.A.; Transferred from Jane Addams; Secre-  
tarial Work.  
ART PEYSHA  
Band; Hi-Y; Case; Mechanical Engineer.  
WAYNE PIEPER  
Swimming; Indiana University; Pharmacy.  
DICK POLLACK  
Hi-Y; Dramatic Club; Intramural Basketball;  
*Sbustle*; College Club; Junior Council on World  
Affairs; Ohio State; Dentist.  
ANGELO POMPIGNANO  
Track; Monitor; Transferred from Collinwood.  
BARBARA POSTLE  
Friendship, President Sophomore, Cabinet; Ath-  
letic Council; N.H.S.; Student Council; Monitor  
Captain; Dramatic Club; G.A.A.; College Club;  
Huron Road Hospital; Nursing.  
ROBERT PTAK  
Transferred from Heights High.

— R —

PAUL RADOMSKY  
Student Council; Hi-Y; Intramural Sports; College  
Club; Color Guard; Bowling Green; Accountant.  
DONNA RENTON  
Choir, Accompanist; Orchestra; Friendship; Col-  
lege Club; *Sbustle*; N.H.S.; Eastman School of  
Music; Concert Pianist.  
NATALIE RIGG  
Transferred from Orange High School; Commer-  
cial Artist.  
RONALD ROGEL  
Stage Crew, Manager; Whirl; Intramural Basket-  
ball; Science Work.  
ROY RONKE  
Hi-Y, Treasurer; Junior Council on World Af-  
fairs, Treasurer; College Club; Movie Operator;  
Princeton; Doctor; N.H.S.  
JIM RUCK  
Choir; Basketball Manager; Intramural Basketball.

— S —

**PHYLLIS SANDSTROM**  
Whirl; Vice President; Friendship; Orchestra;  
Future Nurses' Club.

**ESTHER SAPIA**  
Friendship; College Club; *Shuttle*; Flora Stone  
Mather.

**ALDEN SAXTON**  
College.

**TOM SCHAFER**  
Basketball; Baseball; Drum Major; Intramural  
Basketball.

**SHIRLEY SCHMUNK**  
Friendship; G.A.A.; Ohio State.

**ROBERT SCOTT**  
Football; Tennis; Intramural Basketball; College.

**LARRY SCULLY**  
Transferred from Holy Name.

**ALLEN SEBRANSKY**  
Football; Basketball; Intramural Basketball; Track;  
Choir; Miami; Teacher.

**ALVAH SEIBERT**  
Tennis; Intramural Basketball; Western Reserve;  
Architecture.

**RUTH SHANKLAND**  
Friendship; G.A.A.; Band, Secretary; Orchestra;  
N.H.S.; Student Council; Western Reserve; Medical  
Technology.

**MARC SHAPIRO**  
Transferred from Glenville; Oberlin; Musician.

**ALAN SHIFRIN**  
Cleveland College; Bookkeeping and Accounting.

**NANCY SIMIELE**  
Friendship; Secretary.

**DAVID SIMONIS**  
Carpenter.

**ALAN SINGERMAN**

Orchestra, Vice President; Choir; Student Council;  
Hi-Y, President; N.H.S.; Dramatic Club; Junior  
Kiwaniwan; College Club, Vice President; Monitor  
Captain; Debate Team; University of Pennsylvania;  
Insurance and Bond Underwriter.

**KATHLEEN SKRIBIN**  
Nursing.

**LAWRENCE SMITH**  
Hi-Y; Swimming; Tennis; College Club; *Shuttle*;  
Senior Life Saving; Dramatic Club; University of  
Colorado; Mechanical Engineer.

**JANET SPRINKLE**  
Student Council; Band; Orchestra; G.A.A.; Friend-  
ship; N.H.S.; Canteen; String Ensemble; Swim  
Show; Secretary.

**PAT STAFFORD**  
G.A.A.; Friendship; *Shuttle*; Swim Show; Col-  
lege Club; Transferred from East High; Bowling  
Green.

**ROBERT SWEITZER**  
Transferred from Beall High School. Frostburg,  
Maryland; Dentist.

— T —

**VIRGINIA THOMAS**

Whirl; Service Club; Future Nurses' Club; Friend-  
ship; Student Council; G.A.A.; Huron Road Hos-  
pital; Laboratory; Technician.

**BEVERLY TRAVIS**  
G.A.A.; Friendship; Choir; Stenographer.

**MARY TSEVDOS**  
G.A.A.; College Club; Swim Show; *Shuttle*; Friend-  
ship; Dutch Art Committee; Hiram College; Com-  
mercial Artist.

**PAT TULOW**  
*Observer*; *Shuttle*; G.A.A.; Friendship; College  
Club; Purdue; Psychology.

**ROBERT TURNER**  
Movie Operator; Hi-Y.

— V —

**FLORENCE VALENTINO**  
Friendship; G.A.A.; Glee Club; Canteen; Dutch  
Art Committee; Commercial Artist.

**RICHARD VATH**  
Ohio State; Veterinarian.

**PHILIP VAUGHAN**  
Swimming Team; Band; Whirl; Purdue; Archi-  
tectural Engineer.

**JOHN VECCHIO**  
Football; Intramural Basketball; Track; Monitor.

**CHARLES VOGEL**  
Hi-Y, President; Football; Architecture.

— W —

**JACK WALSH**  
Choir; Orchestra; College Club; Dramatic Club;  
Color Guard; Cross Country; Canteen; Hi-Y;  
Western Reserve.

**MIKE WALSH**  
Transferred from Benedictine.

**WILLIAM WALTERS**  
Band

**BEVERLY WOOD**  
Choir; Friendship; G.A.A.; Swim Show; Wooster;  
Teacher.

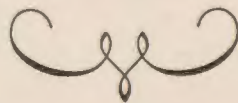
— Z —

**ALLAN ZAMBIE**  
Hi-Y; Choir; Student Council; *Shuttle*, Sports  
Editor; N.H.S.; *Observer*, News Editor; College  
Club; College; Journalism.

**BETSY ZOWASKY**  
G.A.A.; Modern Dancing; Swimming; Friendship;  
Choir; Bowling Green; Elementary Education.

# ED'S RESTAURANT

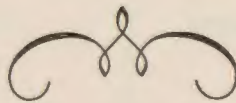
*A Friendly Place to Dine*



Complete

Breakfasts • Lunches • Dinners

Sandwiches and Light Snacks



**EUCLID AND TAYLOR**

**MU. 1-4828**

# George N. Nelson

JEWELER

DIAMONDS • WATCHES • JEWELRY

**EAST CLEVELAND'S JEWELER SINCE 1920**

1385 HAYDEN AVENUE

GL. 1-4693

## Diamond's Men's Shop

13600 Euclid Avenue LI. 1-6810

SHAW GRAD '33

"ONLY QUALITY IN MEN'S WEAR"

DOBBS HATS FLORSHEIM SHOES

DABNAY SUITS

1953 SHUTTLE

OFFICIAL PHOTOGRAPHER

**CHESSHIRE**

**HIGBEE PHOTOGRAPHERS**

1250 Ontario

CH. 1-4600



CONGRATULATIONS TO

**CLASS OF '53**

## Ambassador Dress Suit Rental

*"Pete" Petrone at Your Service*

**FORMAL WEAR IS OUR BUSINESS**

1516 Hayden Avenue

East Cleveland, Ohio

GL. 1-1512

### **EVAN'S FLORIST CO. INC.**

14130 Euclid Avenue  
LI. 1-8983-4-5



**GREATER CLEVELAND'S  
FINEST FLOWER SHOP**



### **DON FISHER**



**FOR  
TINNING AND ROOFING  
FURNACES**



13444 EUCLID AVE. AT SUPERIOR

**FOR A REAL DEAL! !**

**SEE**

**SEE**

**JACK WHELAN MOTORS INC.**

YOUR HEIGHTS DESOTO-PLYMOUTH DEALER

**EV. 1-7200**

**3957 MAYFIELD RD.**

OPEN EVENINGS UNTIL

9:00

**Guaranteed Used Cars**

**One Owner Trade Ins**

**EAST END NASH CO. INC.**

**13829 EUCLID AVENUE**

**LI. 1-5300**

USED CARS — 16229 EUCLID AVENUE

**EAST CLEVELAND, OHIO**

WHOLESALE PARTS

**NASH**

Ambassador and Statesman

Hydramatic

Rambler Convertible

Rambler Station Wagon

**NOBLE WOODVIEW Hi-SPEED**

2230 NOBLE ROAD  
CLEVELAND HEIGHTS, OHIO  
Evergreen 1-9821

**Road Service Lubrication  
Brake Relining**

**JACK & FRANK'S  
SOHIO SERVICE**

**24 Hour Towing Service**  
6 A. M. to 11 P. M.  
Call Liberty 1-9814  
11 P. M. Call Ke. 1-9034  
Mu. 1-4492

**SNOW PLOWING SERVICE**  
Li. 1-9814

*YOU GET THE DONUTS YOU LIKE*

**JACK'S DONUT SHOP**

15614 Euclid Avenue  
GL. 1-9872

*YOU GET THE DONUTS YOU LIKE*

**For the Best in Drugstore Service**

Try

**STANDARD DRUG COMPANY**

EUCLID AND PAGE

**MARI • DEANE BAZAAR**

Gift and Children's Shop

**Handmade Dresses and Gifts**

1369 HAYDEN AVENUE  
Mu. 1-1441

CANDIES

ICE CREAM

*Compliments  
of*

**HOFFMAN'S**

EUCLID AT TAYLOR  
Mu. 1-9612

**OWEN'S PLANTATION**

Wedding Receptions • Business Meetings  
Individual Dinners • Bowling Banquets

***We Specialize In Weddings***

15357 EUCLID AVENUE  
Opposite Shaw

Gl. 1-2364

Gl. 1-5880

**FRED'S NOBLE BAKERY**

2190 NOBLE ROAD  
Glenville 1-6750

***"We Make Delicious Cakes  
For All Occasions"***

# MOTTER'S MUSIC HOUSE

*Devoted to Music Exclusively*

Specialized Instructions on All Instruments

All Lessons Private

Complete Line of New and Reconditioned Instruments

RECORDS

SHEET MUSIC

PIANOS

GUARANTEED REPAIRS ON ALL INSTRUMENTS

**1862 Coventry Road near Euclid Heights Blvd.**

**YE. 2-2407**

**MERCURY**

*"GET THE STRATTON STORY FIRST"*

**High Trades**

**Good Service**

**BETTER CARS AT LOWER PRICES**

## STRATTON MOTORS INC.

15001 Euclid Ave.

UL. 1-3500

**SHAW KIRK**  
CONFECTIONARY  
14300 EUCLID AVENUE

LI. 1-9693

Hamburgers • Sodas • Sundaes  
Cold Meats • School Supplies

**H. F. MARTIN**  
DRY GOODS STORES

3940-3942 MAYFIELD ROAD AT NOBLE  
1378-1380 HAYDEN AVENUE AT SHAW

**Order Your Middies Today**  
**Selection of 50 Colors**

ALWAYS AT YOUR SERVICE  
DRESS SUIT RENTAL

**SOMMER'S MEN'S AND BOYS' WEAR**

"POPULAR BRANDS AT POPULAR PRICES"  
SPECIALIST IN BOYS' WEAR

Cleveland Heights, Ohio  
Phone LI. 1-2042                      2179 Noble Rd.

**RONDINI'S RESTAURANT**

15532 Euclid Avenue  
East Cleveland 12, Ohio

WE CATER TO PRIVATE PARTIES

Phone GL. 1-7613

ALTERATIONS                      LI. 1-8384

**BELMAR FASHIONS**

DRESSES - COATS - SUITS - SPORTSWEAR  
FORMALS - ACCESSORIES - LINGERIE

2153 Noble Road                      East Cleveland, Ohio

HAVE YOUR DOCTOR PHONE US  
YOUR PRESCRIPTIONS

**STONEBRAKER'S**

GL. 1-7410

3 Registered Pharmacists  
Rosalie, Bill, Stoney

**HERRINGSHAW'S**  
**GOOD HARDWARE**

*Since 1875*

2169-71 NOBLE ROAD                      GL. 1-5906

**Let Us Be Your Florist**

Be It  
"Black or Red"

**THE FLOWER DELL**

BILL MELTZER

Shaw Grad

**PAUL HEISER, INC.**

2151 NOBLE ROAD  
GL. 1-3909

**Buy WISER . . .  
See HEISER . . .**

for

APPLIANCES

CARPETING

FURNITURE

TELEVISION

**"LEONARD'S"**

**Quality Meat Market**

1469 HAYDEN AVENUE

GL. 1-4435

**CATHY JANE FOODS**

1619 HAYDEN AVENUE

**Best Wishes**

GL. 1-3904

**EUCLID SHELDON**

**GULF SERVICE**

Automatic and Hydramatic Transmission  
and Motor Tune Up Specialists  
Accessories

MU. 1-9792

15360 EUCLID AVE.

**FISHER BEAUTY SALON**

2219 NOBLE ROAD  
CLEVELAND HEIGHTS, OHIO

EV. 1-5655

Open Tuesday, Thursday and  
Friday Evenings by Appointment

**TOM WOO**

**Noble Hand Laundry and  
Dry Cleaning**

2217 NOBLE ROAD  
CLEVELAND HEIGHTS, OHIO

*Insurance That Insures*

**HAMILTON  
INSURANCE AGENCY**

FOREST HILL BLDG.  
Cor. Euclid and Superior Aves.  
LI. 1-7361

*Your Favorite Photograph  
Sealed in Plastic*

Identification Cards, Social Security Cards,  
Club Cards, and Badges

**THE CLARKE LAMINATING CO.**

1753 NOBLE ROAD  
East Cleveland 12, Ohio

GEORGE or  
ELLA CLARKE

LI. 1-5400  
after 4 P. M.

**McNEELEY'S FLORAL COMPANY**

1383 HAYDEN AVENUE  
(Next to the Shaw Hayden Theater)  
EAST CLEVELAND 12, OHIO

Glenville 1-2683

**(We Wire Flowers Anywhere)**

**BILL'S FLOWER SHOP**

Telegraph • Delivery Service

**Flowers For All Occasions**

We Deliver

MAE ALDERD 1299 HAYDEN AVENUE  
At Alder

*Meet Me At Mary's for Home Made  
Ice Cream and Delicious Chocolates*

**MARY'S SWEET SHOP**

1391 Hayden Avenue LI. 1-9622

**LOHR'S ATLANTIC SERVICE**

NOBLE AND GREYTON ROAD  
EV. 1-9784

**Tires Batteries and Accessories**

**HAYDEN HARDWARE CO.**

HARRY W. REID

**Sherwin-Williams Paints**

**Steamers • Sanders**

1505 HAYDEN AVENUE CL. 1-6642

**"Your Friendly Hardware Store"**

GL. 1-3267

HARRY E. NOLAN

GL. 1-3268

**NOLAN HARDWARE CO.**

BPS PAINTS

• HARDWARE

PLUMBING SUPPLIES

ELECTRIC SEWER CLEANING

COPPER WATER LINES INSTALLED

**Cleveland Heights, Ohio**

**2196 Noble Road**

**JAYE & JAYE**

**INC.**

14681 and 14715 EUCLID AVE.

UI. 1-1880

**For the Best in Home Appliances**

Portraits

Weddings

**CHRISTIAN VIBURS**

Photographers

14148 EUCLID AVE.

LI. 1-0130

**EAST CLEVELAND, OHIO**

**THE  
WILLIAM ABEL & SONS  
CO.**

**FUNERAL DIRECTORS**

HENRY A. ABEL, General Manager  
**7010 Superior Avenue HE. 1-0250**

**FUNERAL HOMES**

**15317 Euclid Ave. Cor. Shaw Ave.  
15333 Euclid Ave. Near Shaw Ave.**

We Carry a Complete Line of Caskets in  
Our Own Display Room  
Funerals Available to Meet Every  
Financial Requirement

**Phones: LI. 1-1000 GL. 1-0614**  
PARKING IN REAR

**When you're  
thinking of  
a career...**



**Think of  
Ohio Bell...**

- A job with a future
- A good salary
- A friendly place to work

**THE OHIO BELL  
TELEPHONE COMPANY**

**Compliments  
of  
A Friend**



