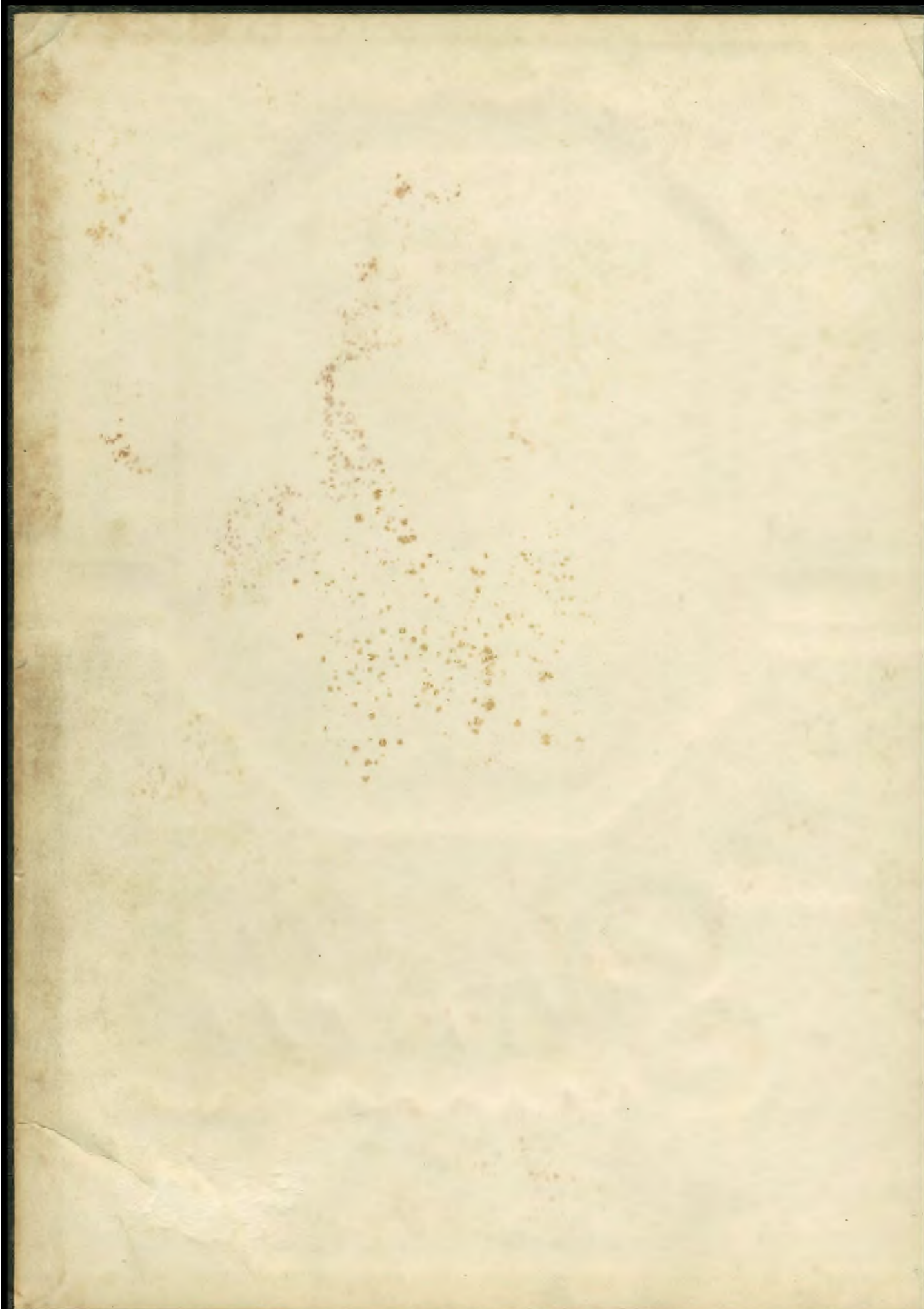


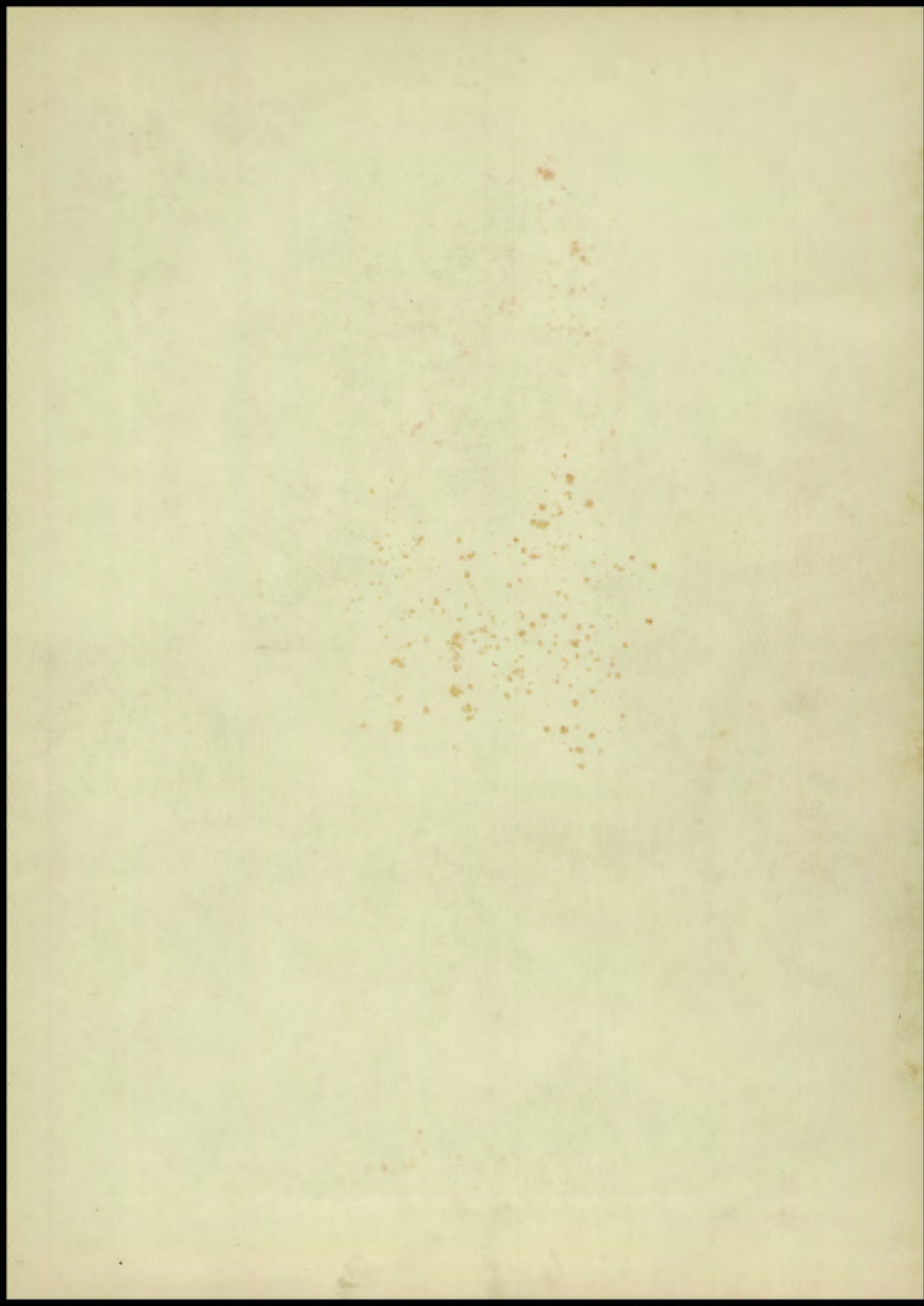


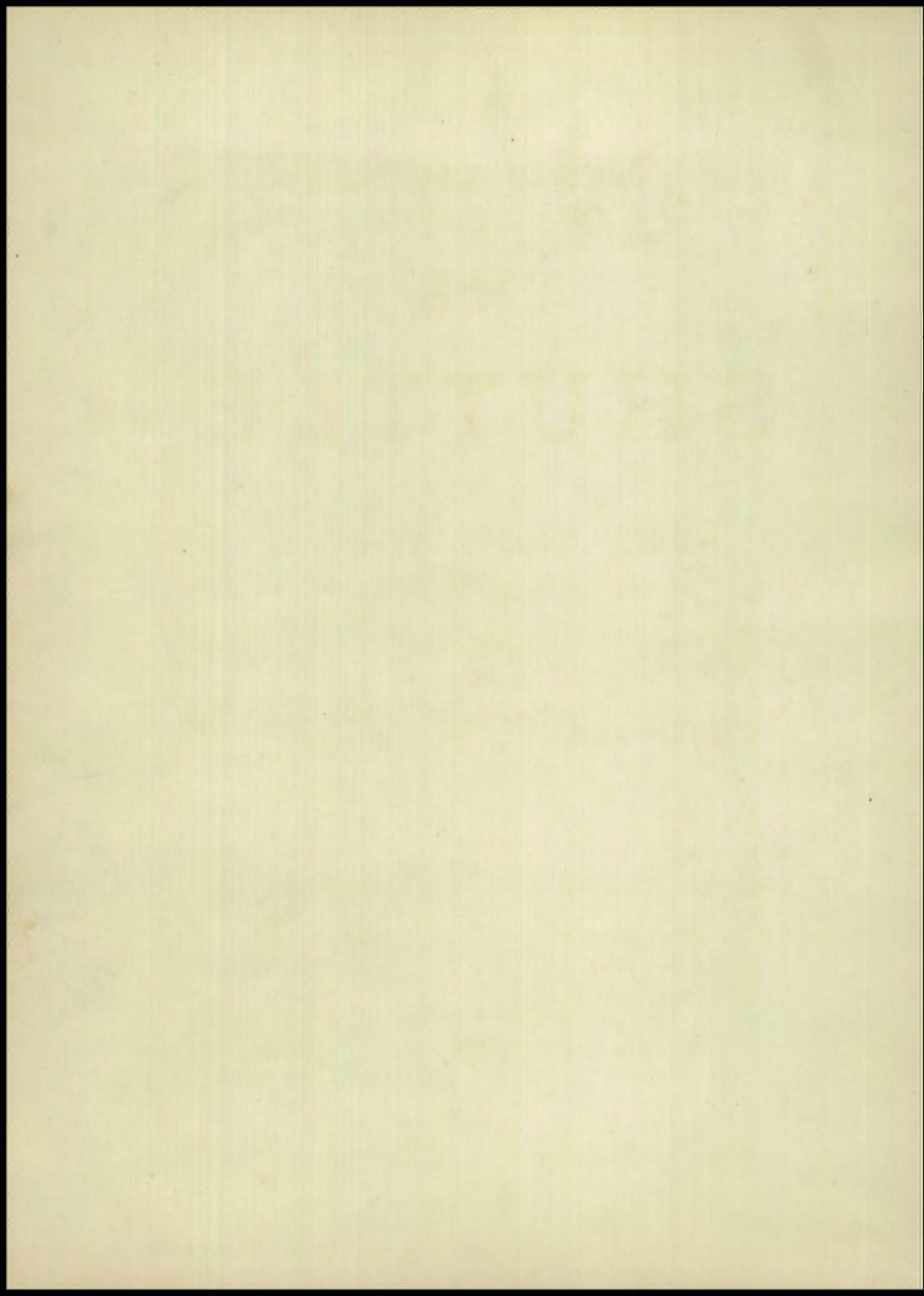
The

Shuttle

1944







THE SHUTTLE

SHAW HIGH SCHOOL
EAST CLEVELAND, OHIO

Volume 41

BERT BOYLE

Editor-in-Chief

TOM PATTON

Associate Editor

MARY K. BONSTEEL

Copy Editor

ROBERT SABA

Business Manager

WAYLAND SMITH

Picture Editor

OUTSIDE AND





INSIDE SHAW

Dedicated to

The members of the graduating classes who answered the call of their country before completing high school, and are now carrying the name of their Alma Mater throughout the world.

True patriots all; for be it understood
We left our country for our country's good.

. . . George Barrington . . .

JACK BALFOUR
BOB CARVER
HARRY DOMBROSKI
CARL DRAGO
WILBUR HILLOCK
JERRY PASCOE

FRED RANDALL
JOHN TOOMEY
ROBERT TRAVERS
WILLIAM WEBER
HOWARD WHITTAKER
KEN WISMER



TABLE OF CONTENTS

The 1944 Shuttle by Sections

INTRODUCTION

Presentation 6-7

LEADERSHIP

Introducing the faculty advisers 10-12

SCHOLARSHIP

The Seniors 14-39

The underclassmen by homeroom 40-48

SPORTSMANSHIP

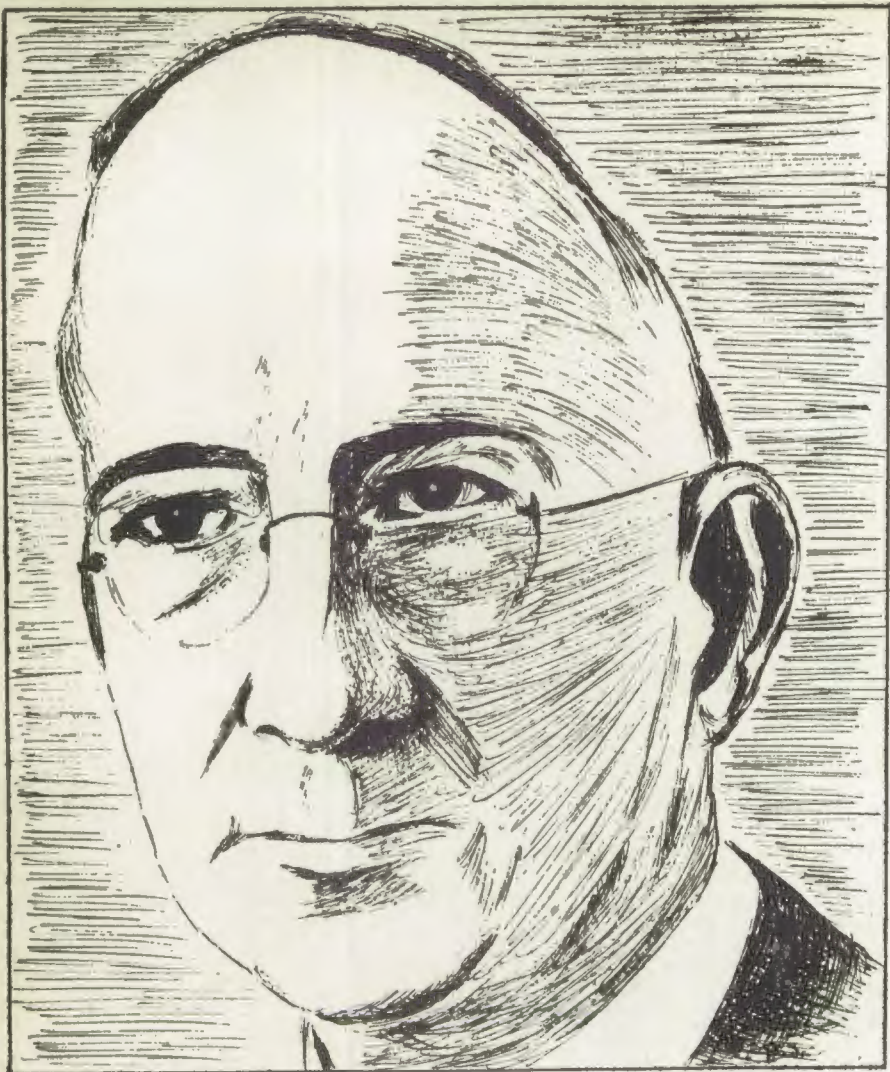
Boys' Sports 51-63

Girls' Athletics 64-74

FELLOWSHIP

A pictorial review of the clubs and
extra-curricular activities 76-101





MR. E. G. ABBOTT

IN MEMORY OF A GENTLEMAN

February 1, 1944

Earl Abbott was a true gentleman in a cynical between-wars age when the concept of a gentleman was held in derision; he was a true scholar in a practical, hard-headed era when a scholar was considered an expensive, time-wasting bore. He was an ungainly man, but so was Abraham Lincoln; and he had Lincoln's inborn courtliness of manner and genuine kindness of heart that made him more than a mere friend to his friends. In his teaching work he found no book suitable for his purposes, but neither did Socrates; and like Socrates he questioned his pupils, encouraging them to write their own books—and he himself worked on his own book for years. A gentleman who went out of his way to be a gentleman, a creative scholar who did much more than is expected of a mere teacher—such was Earl Abbott.

In Memoriam to . . . Earl G. Abbott

He was faculty manager of athletics for 20 years. Probably no one outside the school system can appreciate what the job meant: the pulling and haulings, the requests and demands, the occasional recriminations by others, the endless "seeing to" details that nobody else would see to. Yet in all those years, no man ever heard an unkind or profane word pass his lips.

In relations with his fellow teachers his career bears a surprising parallel to certain lines of poetry familiar to all of us, the opening quatrain of Kipling's "If".

"If you can keep your head when all about you
Are losing theirs, and blaming it on you;
If you can keep your faith when all men
doubt you,
And make allowance for their doubting,
too - -"

Kipling might well have used Earl Abbott as his model for these lines.

If, as we hope and believe, Heaven is the consummation of all our dreams, there is this morning somewhere in Heaven's halls a celestial classroom, peopled with a shining, soft-voiced throng of young seraphim. To them enters an angelic Monitor, accompanied by a bowing and smiling figure strange to them. As the newcomer climbs to the platform and prepares to address them on the social and political history of a tiny planet below called Earth, the Monitor turns to the youths in the room and says to them:

"Ladies and gentlemen, your new instructor: Earl Gillespie Abbott."

In Memoriam to . . .
E. C. Offinger

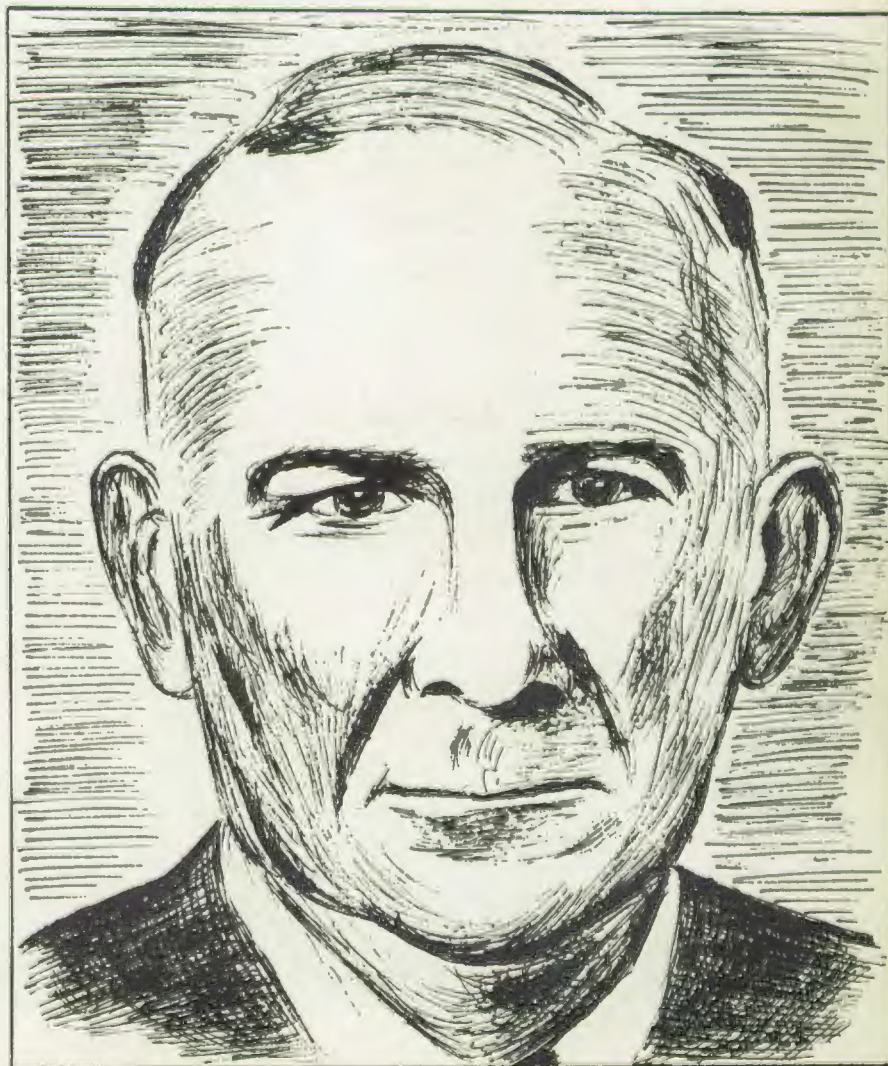
**We Have Tried to Be Worthy of E. C.
Offinger's Long Service and Loyalty**

EDWARD C. OFFINGER was a one-man booster committee for Shaw High athletics. As head of the physical education department, he had trained thousands of boys.

"Offy" is what these boys called him. Last year's track and tennis teams were under his direction.

For more than thirty-five years Mr. Offinger, coach and adviser, was the inspiration of every athlete in the school. That is because this teacher of physical fitness symbolized sincerity and loyalty.

Such men are on earth to guide and give courage. Truly wherever Edward C. Offinger's spirit now dwells, he has bequeathed a challenge to the school which he loved so faithfully. Shaw High must accept this challenge by proving itself worthy of his unselfish service.

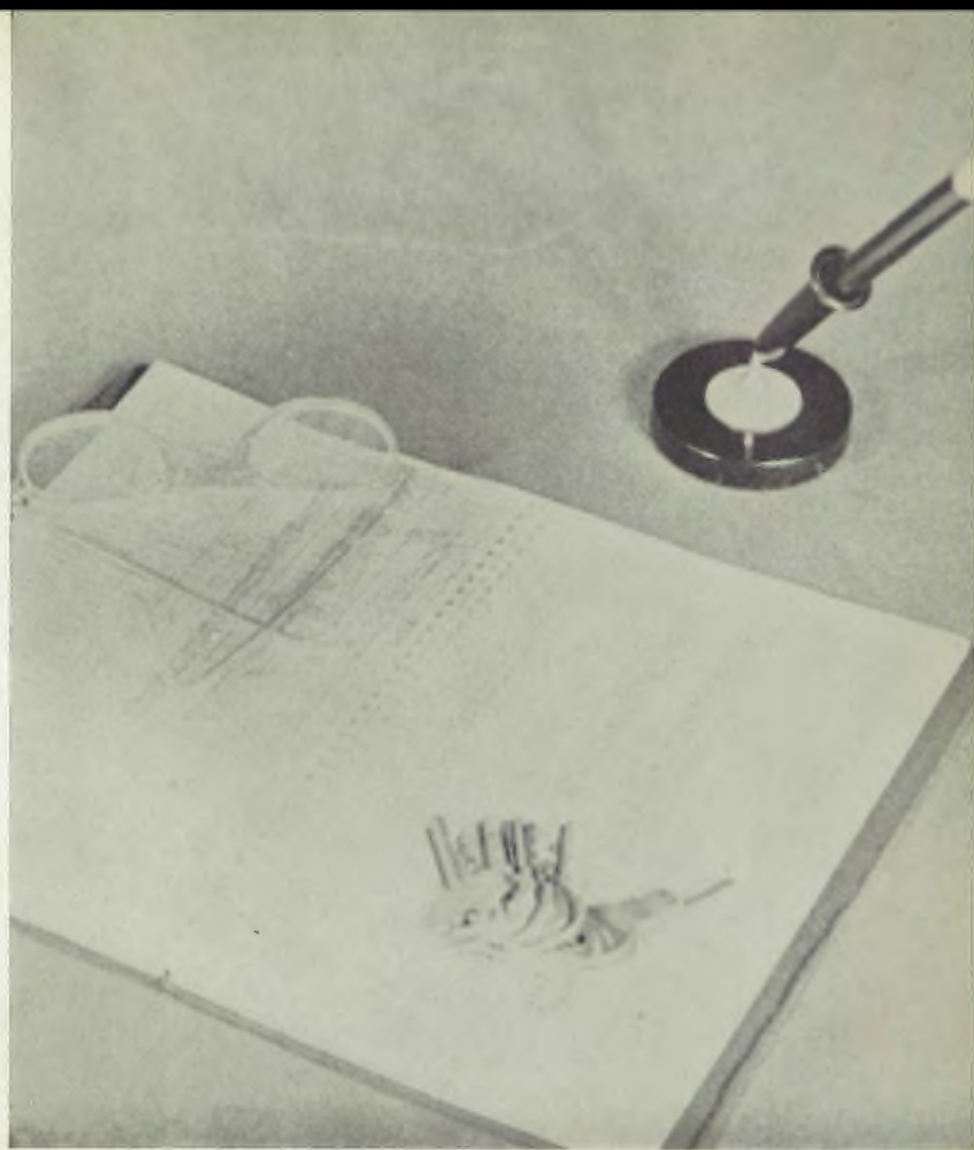


MR. E. C. OFFINGER

I N D E X

where to find your club and activity pictures

Football	52-55
Basketball	56-57
Tennis	58
Track	59
Swimming	60-61
Baseball	62
Girls' Athletic Council	64
Tarpon	66
Girls' Lifesaving	67
Modern Dancing	68
Riding Club	69
"S" Letter Girls	70
Gym Leaders	71
Girls' Volleyball	72
Girls' Basketball	73
Aqua-dux	74
Student Council	76-79
Observer	80-81
Dramatic Club	82
History Club	83
Sociology Club	84
Art Club	85
Boys' Glee Club	86
Girls' Glee Club	87
Senior Friendship	88, 101
Sophomore Friendship	89
Honor Society	90
Whirlo Club	91
Stage Crew	92
Movie Crew	92
Band	93
Yearbook Staff	94
Hi-Y	95-97
Spanish Club	98
Debate—Foreign Affairs Council	99
Choir	100



LEADERSHIP



DR. O. J. KORB

DR. O. J. KORB

During the five years that O. J. Korb has been superintendent of the East Cleveland schools, he has become well-known for his quiet courtesy and genuine interest in all the people with whom he has come in contact. The smooth efficiency which characterizes the workings of the East Cleveland school system is a fitting tribute to Dr. Korb's capabilities and to the respect which he inspires in his co-workers.



MR. M. C. DIETRICH

M. C. DIETRICH

For fifteen years, M. C. Dietrich has been much more than merely principal of Shaw High School. He has been leader, adviser, and personal friend to thousands of students. Prominent in civic as well as school affairs, Mr. Dietrich has brought Shaw to the attention of a responsive and interested community. Through his skill as an educator and executive, Shaw has gained nationwide reputation for highest standards in fields of athletics, commerce, and music, as well as in academic standing.



Mr. George Nelson



Mrs. Meriam Morgan



Mr. Ben Wickham

BOARD OF EDUCATION



Mr. C. W. Kimmel



Mr. Paul McClelland

FACULTY ADVISERS



Miss Jean Quay
Assistant Principal



Mr. Howard Hunter
Guidance Director



Miss Mary Morrison
Head Librarian



SCHOLARSHIP

CLASS OF JANUARY 1944 OFFICERS

President

Vice-President Secretary-Treasurer



Ken Emerson



Bob Sampson



Dick Wolcott



SHAW AS SEEN FROM AFAR

From lower Shaw Avenue in the middle of winter the Academic Building looks thus:



JANUARY CLASS-1944

Frank Abazia

Iona Anderson
G. A. A.
Soph. Friendship
Senior Friendship

Jean Barnes
G. A. A.
Soph. Friendship
Dramatic Club
Cinema Club

Marjorie Barrett
G. A. A.
Girls' Glee Club
(secy., treas., pres.)
A Capella Choir
Soph. Friendship

Franklyn Belville
Rifle Club
Boys' Glee Club
Hi-Y

Jack Berman
Honor Society (pres.)
Student Council
Jr. Red Cross
Band

Janice Bernstein
Honor Society
Basketball
Baseball
G. A. A.

Jay Berry
Reserve Basketball
Monitor Committee

Mary Bigalke
Student Council
(secy.)
G. A. A.
A Capella Choir
Senior Friendship
(secy., pres.)

Matthew Biscotti
Honor Society
Student Council
Football
Cross Country

Victoria Bitonti
Jr. Red Cross
Senior Friendship

Robert Bleier

Lois Boyer
Soph. Friendship
Art Club
Spanish Club (secy.)
Streamliners' Club

Lois Calvin
Observer (ad mgr.)
Swimming
G. A. A.
"S" Letter Girl

Ray Cooper

Gloria Elliott
Observer
Leaders' Club (secy.)
G. A. A.
"S" Letter Girl

Helen Ennes
Leaders' Club
Girls' Glee Club
A Capella Choir
Senior Friendship

Betty Evans
A Capella Choir
Senior Friendship
Mid-Year Play
History Club

Betty Faulds
Leaders' Club
G. A. A.
"S" Letter Girl
Senior Friendship

Melvin Fenrich

Jean Ferguson
G. A. A.
Band
Senior Friendship
Dramatic Club

Lois Mae Field
Leaders' Club
Senior Friendship
Sociology Club
Cinema Club

Eudyce Garber
Honor Society
Jr. Red Cross
G. A. A.
"S" Letter Girl

Irene Gerega
G. A. A.
Tarpon Club
Girls' Basketball
Senior Friendship

Jean Goncher
Honor Society (secy.)
Observer
(managing editor)
Athletic Council
Leaders' Club

Arthur Goodrich
Hi-Y
Monitor Committee

Ann Graf
Orchestra
Librarian
Junior Class secy.
Girls' Glee Club
(Hinckley High)

Robert Griffin
Hi-Y
History Club

Alan Gross
Golf
Varsity "S" Club
Boosters' Committee
Cheerleader

Rosemary Haff
G. A. A.
Senior Friendship



JANUARY CLASS-1944

TOP ROW

Jean Hardy
Student Council
Shuttle
Observer
Athletic Council

Marjorie Hartman
G. A. A.
"S" Letter Girl
Aqua-Dux
Tarpon

Marjorie Hejl
G. A. A.
Girls' Glee Club
Senior Friendship
History Club

Patricia Hoefler
G. A. A.
Band
A Capella Choir
Senior Friendship

Dorothy Jacobsen
Leaders' Club
G. A. A.
"S" Letter Girl
Senior Friendship

SECOND ROW

Edward Jenkins

Robert Johnston

Isabelle Johnston
Student Council
A Capella Choir
Senior Friendship
Dramatic Club

Patricia Johnston Jr.
Red Cross
(vice-pres.)
G. A. A.
Aqua-Dux
Modern Dancing

Effie Johnston
G. A. A.
Girls' Glee Club
Senior Friendship
Sociology Club
(treas.)

THIRD ROW

Normon Jones
Hi-Y
Monitor Committee

Betty Ketteler
Honor Society
Student Council
Observer
(feature editor)
Athletic Council

Carol Kibler Jr.
Red Cross
G. A. A.
Girls' Glee Club
A Capella Choir

Ann Kolisch
Leaders' Club
G. A. A.
Senior Friendship
Dramatic Club

Sybil Kopp
Leaders' Club
G. A. A.
"S" Letter Girl
Senior Friendship

FOURTH ROW

Elaine Krueger
G. A. A.
Soph. Friendship
Monitor Committee

Andy Larned
Golf
Hi-Y
Spanish Club

Carl Larsen
Golf
Hi-Y
Sociology (pres.)
Monitor Committee

Helen La Violette
Art Club
Spanish Club

Joy Lawrence

FIFTH ROW

Jack Lefkowitz
Tennis

Allan Levine
Honor Society
Swimming
Tennis
Varsity "S" Club

Ida Liberator
G. A. A.
Girls' Glee Club
Senior Friendship
Monitor Committee

Bob Lumley
Swimming
Camera Club

Marilyn Miles
Leaders' Club
G. A. A.
A Capella Choir
Senior Friendship

BOTTOM ROW

Wayne Moorhead
Honor Society
(vice-pres.)
Student Council
(vice-pres., pres.)
Junior Kiwanian
Junior Foreign Affairs

Albert Murray
Cross Country
Track
Varsity "S" Club
(vice-pres.)
Whirlo

Lois Norton

Ruth Otto
G. A. A.
Soph. Friendship
Health Club
Whirlo

Barbara Peters
G. A. A.
Soph. Friendship
Senior Friendship
Spanish Club



JANUARY CLASS-1944

Richard Phifer
Hi-Y
Krypton (pres.)

Jean Phillips
Swimming
Soph. Friendship
Senior Friendship

Shirley Rauch
Senior Friendship

Charles Ricci
Jr. Red Cross
Spanish Club

Marilyn Rice
Jr. Red Cross
G. A. A.
Senior Friendship
Dramatic Club

Alvera Robertson
Soph. Friendship
Senior Friendship
Cinema Club

Allen Rom

Malcolm Rush
Football
Band
Rifle Club

Mildred Salter
Jr. Red Cross
G. A. A.
Girls' Glee Club
A Capella Choir

Virginia Savage
G. A. A.
Soph. Friendship
Senior Friendship

Howard Schell
Football
Swimming
Varsity "S" Club
Boosters' Committee

Gladys Schnell
Girls' Glee Club
(treas.)
History Club
Spanish Club
(secy.)
Health Club

Raymond Smalley
Student Council
Sociology Club

Florence Smith
Jr. Red Cross

Virginia Smith
Leaders' Club
G. A. A.
Senior Friendship
Spanish Club
(vice-pres.)



Doris Snyder

Marvin Spira

Roger Sprenkle
Band
Orchestra
Jr. Foreign Affairs
Hi-Y

Larry Stein
Jr. Red Cross
History Club
Debate Club

Raymond Todd
Student Council
(treas., vice pres.)
Cheerleader
Boys' Glee Club
A Capella Choir

Howard Van Schoor
Jr. Red Cross
Dramatic Club
Debate Club
Stamp Club

Jennie Varanese

Jean Vakoun
Honor Society
(treas.)
G. A. A.
Aqua-Dux
Girls' Glee Club

Muriel Walsh
Shuttle
Leaders' Club
G. A. A.
Band (majorette)

Robert Ward
Tennis
Boys' Glee Club
Hi-Y
Chess and Checker
Club

Arline Weber
G. A. A.
Girls' Glee Club
(pres.)
Senior Friendship
History Club

Sylvia Weiss
G. A. A.
Girls' Glee Club
(pres.)
A Capella Choir
Senior Friendship

Dick Wiley

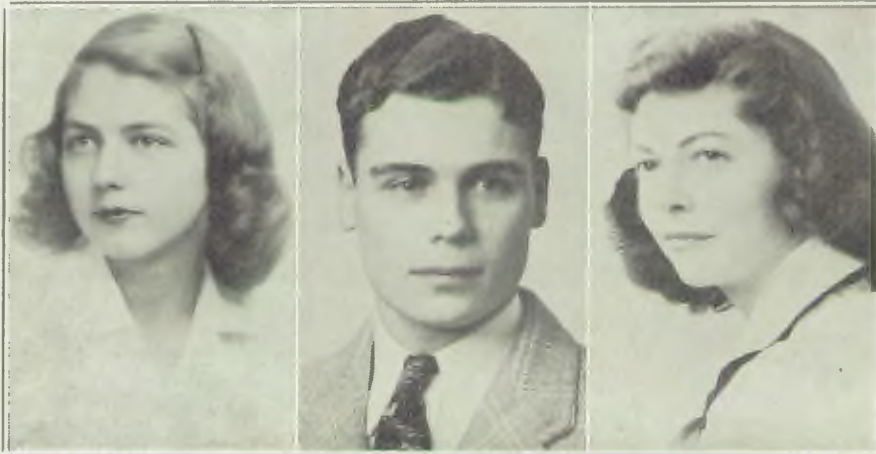
Irene Wood

CLASS OF JUNE 1944 OFFICERS

Secretary-Treasurer

President

Vice-President



Janice Lloyd
Honor Society
Student Council
Life Saving
Tarpon (pres.)

Steve Regan
Honor Society (pres.)
Junior Kiwanian
Football
Baseball

Esther Hisey
Student Council
(secy.-treas.)
Boosters' Committee
Athletic Council
(secy.-treas.)
Soph. Friendship
(pres.)





JUNE CLASS-1944

TOP ROW

Warren Abel
Track

Marjorie Allan
Band
Orchestra
Whirlo Club
Cinema Club

William Allen
Band
Hi-Y
History Club
Camera Club

Lois Arnold
Soph. Friendship
Dramatics Club
Cinema Club

Ann Phyllis Arnold
Jr. Red Cross
Basketball
Leaders' Club
G. A. A.

SECOND ROW

Patricia Austin
G. A. A.
"S" Letter Girl
Tarpon
Life Saving

Vincent Aveni
Band
Orchestra
Monitor Committee

Beverly Avis
Honor Society
Leaders' Club
G. A. A.
Friendship

John Baldwin

William Barker
Swimming
Rifle Club
Hi-Y
Sociology Club

THIRD ROW

Beatrice Barnes
Swimming

Marilyn Barnhart
G. A. A.
"S" Letter Girl
Soph Friendship
Senior Friendship

Ruth May Barry
Jr. Red Cross
G. A. A.
A Cappella Choir
Senior Friendship

Ralph Barton
Jr. Red Cross
Swimming
Varsity "S" Club
Hi-Y (treas.)

Helen Bell
Drum Majorette
Senior Friendship
Whirlo Club

FOURTH ROW

Elaine Benedict
Honor Society
Observer
(Sports Editor)
G. A. A.

Shirley Benson
G. A. A.
"S" Letter Girl
Senior Friendship
Dramatics Club

Mary Berger
G. A. A.
A Cappella Choir
Senior Friendship
Dramatics Club

Bruce Bletso
Rifle Club
Hi-Y
Camera Club

Marian Bliss
A Cappella Choir
Sociology Club

FIFTH ROW

William Bolin
Rifle Club
Jr. Foreign Affairs
Debate Club

Allan Bond
Swimming
Spanish Club

Mary Kay Bonsteel
Honor Society (treas.)
Student Council
Observer
Senior Friendship
(vice-pres.)

David Booth
Observer
Track
Sociology Club
History Club

Barbara Bottenus
Athletic Council
Leaders' Club
G. A. A.
"S" Letter Girl

FIRST ROW

King Bow

Olive Boyd
G. A. A.
A Cappella Choir
Senior Friendship
Dramatics Club

Bert Boyle
Student Council
Shuttle
Junior Kiwanian
Basketball

Ernest Bradley
Band
Rifle Club

Thomas Brennan
Hi-Y
Monitor Committee



JUNE CLASS-1944

TOP ROW

Larry Brown
Track
Band
Hi-Y
Whirlo Club

Beverly Brunner
G. A. A.
Friendship Club
Monitor Committee

Marie Brunst
Jr. Red Cross
G. A. A.
Senior Friendship
Whirlo Club

Eleanor Brussee
Girls' Glee Club
A Cappella Choir
Senior Friendship
Dramatics Club

Ronald Bundy

SECOND ROW

Jane Burdett
G. A. A.
Aqua-Dux
Senior Friendship
History Club

Harvey Burwell
Band
Hi-Y

Margaret Campbell
G. A. A.
Girls' Glee Club
Senior Friendship
Monitor Committee

Barbara Carlson
Senior Friendship
Cinema Club

Betty Charlot

THIRD ROW

Robert Christy
Tennis
Band
Hi-Y

Marilynn Church
Jr. Red Cross
Leaders' Club
Senior Friendship
Dramatics Club

John Cicone
Tennis
Band
Orchestra

Jeanne Clark
Swimming
G. A. A.
"S" Letter Girl
Senior Friendship

Jean Clements
Senior Friendship
Sociology Club (secy.)

FOURTH ROW

Marion Cole
Observer
(Feature Editor)
Jr. Red Cross
Leaders' Club
G. A. A.

Robert Colgan
Debate Club
Whirlo Club
Cinema Club

Richard Collins
Football
Baseball
Varsity "S" Club
Rifle Club

Edson Connell
Swimming
Hi-Y
Art Club
Sociology Club

James Conway
Track

FIFTH ROW

Lillian Cook
G. A. A.
Girls' Glee Club
A Cappella Choir
Senior Friendship

Dorothy Helen Cope
G. A. A.
Girls' Glee Club
(vice-pres.)
A Cappella Choir
Senior Friendship

James Corbett
Basketball
Hi-Y
Monitor Committee

Peggy Corlett
G. A. A.
Friendship Club
Monitor Committee

Betsy Cowles
G. A. A.
Senior Friendship
Sociology Club
Monitor Committee

BOTTOM ROW

Carol Beverly Currier
Honor Society
G. A. A.
Jr. Foreign Affairs
Soph. Friendship

Paul Daly
Football
Varsity "S" Club
Monitor Committee

Catherine Davidson
Honor Society
Leaders' Club
G. A. A.
"S" Letter Girl

Leila Roe Davies
Leaders' Club
G. A. A.
Aqua-Dux
Jr. Foreign Affairs

William Dean
Honor Society
Movie Crew
Debate Team



JUNE CLASS-1944

TOP ROW

Jean Disbro
Leaders' Club
G. A. A.
"S" Letter Girl
Senior Friendship

Dorothy Dows
Honor Society
G. A. A.
Band (secy.)
Senior Friendship

Bernard Dayle
Swimming
Track
Rifle Club

Patricia Draker
G. A. A.
Friendship Club
Whirlo Club

Donald Drensky
Hi-Y
Whirlo Club

SECOND ROW

La Verne Dvarak
G. A. A.
Friendship Club
Monitor Committee

Jaan Eaton
Friendship Club
History Club
Health Club

Ann Edwards
G. A. A.
Senior Friendship
Whirlo Club
Monitor Committee

William Elder
Student Council
Jr. Red Cross
Swimming
Hi-Y

Donald Ennis
Dramatics Club

THIRD ROW

Randall Erdley
Swimming Manager
Jr. Foreign Affairs
Hi-Y
Debate Club

Betty Irene Esterly
Leaders' Club
G. A. A.
Jr. Foreign Affairs
Senior Friendship

Paul Evans
Sociology Club

Jaan Figler
G. A. A.
Girls' Glee Club
A Cappella Choir
Senior Friendship

Jean Finn
G. A. A.
Friendship Club
Dramatics Club

FOURTH ROW

Jean Flannery
Friendship Club
Sociology Club

Wallace Fogo
Football
Track
Rifle Club
Jr. Red Cross

Gladys Ford
G. A. A.
Senior Friendship
Sociology Club
History Club

Eleanor Forni
G. A. A.
Girls' Glee Club
Senior Friendship

Paul Forquer
Track
Swimming
Varsity "S" Club

FIFTH ROW

Donald Fortlage
Student Council
Swimming
Varsity "S" Club
Boosters' Committee

Virginia Francis
Band
Friendship Club

Marilyn Frericks
G. A. A.
Jr. Foreign Affairs
Girls' Glee Club
A Cappella Choir

Annette Fuldauer
Honor Society
Shuttle
Observer
Managing Editor
G. A. A.

Walter Funk
Track
Varsity "S" Club
Observer
Monitor Committee

BOTTOM ROW

Patricia Gallagher
Leaders' Club
G. A. A.
"S" Letter Girl
Aqua-Dux

Kenneth Geitz
Swimming
Rifle Club (treas.)

Max Gillam
Student Council
Football
Varsity "S" Club
Hi-Y

Gloria Goerndt
Student Council
Jr. Red Cross
Jr. Foreign Affairs
Girls' Glee Club

Adele Joan Goldberg
Observer
G. A. A.
Aqua-Dux
Senior Friendship



JUNE CLASS-1944

TOP ROW

Robert Goldsmith

Richard Green
A Cappella Choir
Hi-Y

Don Greggor
Hi-Y (pres.)
Sociology Club
History Club

Milburn Griffin
Jr. Foreign Affairs
Track
Hi-Y (treas.)
Monitor Committee

Robert Grossman
Stage Crew
Monitor Committee
Boys Riding Club
(pres.)

SECOND ROW

William Grove
Swimming
Hi-Y
Camera Club

Frank Hoch
Hi-Y (pres. of
Halcyon)
Sociology Club
Chess and Checker
Club

Sally Hammond
Honor Society
Student Council
Tarpon Club
Athletic Council

Donald Hanson
Band

Dorothy Hanson
G. A. A.
Orchestra
Senior Friendship
Debate Club

THIRD ROW

Jean Hapeman
Leaders' Club
Friendship Club

John Harmon
Track Captain
Varsity "S" Club
Jr. Foreign Affairs
Hi-Y
(pres. of Mazda)

June Harper
Senior Friendship

Joan Harrison
Leaders' Club
G. A. A.
"S" Letter Girl
Soph. Friendship

FOURTH ROW

William Hart
Football Captain
Basketball
Baseball
Varsity "S" Club
(pres.)

Virginia Haverstein
Friendship Club
Dramatics Club

Stan Hiltabiddle
Boys' Glee Club
(pres.)
A Cappella Choir
Librarian
Dramatics Club

Dorothy Hoover
Honor Society
G. A. A.
"S" Letter Girl
Senior Friendship

Jean Houston
G. A. A.
Friendship Club
Monitor Committee

FIFTH ROW

Janet Hoye
G. A. A.
Senior Friendship
Whirlo Club (treas.)

Patricia Hoye

Roberta Huettich
G. A. A.
Senior Friendship
(art chairman)
Art Club (pres.)
Honor Society

Annette Lafelice
G. A. A.
Dramatics Club
Whirlo Club
Monitor Committee

Robert Inks
Sociology Club

BOTTOM ROW

John Inman
Swimming
Boosters' Committee
Band
Orchestra

Paul Izant
Band
Hi-Y
Spanish Club

Thomas Izant
Swimming
Varsity "S" Club
(secy.)
Spanish Club

William Jackson
Observer
Dramatics Club
Sociology Club
History Club (pres.)

Alice Janz
G. A. A.



JUNE CLASS-1944

TOP ROW

Joyce Jarmon
Observer
Dramatics Club
(vice-pres.)
Whirlo (vice-pres.)
Cinema Club (secy.)

Doris Keagle
G. A. A.
Friendship Club
History Club

Elsie Keeler
Modern Dancing
Senior Friendship
Monitor Committee

Helen Keeler
Senior Friendship
Modern Dancing

Donald Kern
Honor Society
Band (pres.)
Orchestra

SECOND ROW

Nancy Kifer
G. A. A.
Friendship Club
Sociology Club

Barbara Kinsey
Band
Orchestra

Iva Lee Knight
Student Council
Jr. Red Cross
G. A. A.
"S" Letter Girl

Janis Koppitch
A Cappella Choir

Caroline Krische
Honor Society
G. A. A.
Girls' Glee Club
(secy.)
A Cappella Choir

THIRD ROW

Mae Lambert
G. A. A.
A Cappella Choir
Senior Friendship
Mid-Year Play

Robert Lampert
Football
Hi-Y
Spanish Club
Monitor Committee

William Lang
Jr. Red Cross
Orchestra
Band
Sociology Club

Gertrude Langdon
Student Council
G. A. A.
Tarpan
Senior Friendship

David Larsen
Student Council
Observer
Varsity "S" Club
Golf

FOURTH ROW

Lois Laserson
G. A. A.
Friendship Club
Dramatics Club

Louis Lehmann
Honor Society
Swimming
Varsity "S" Club
Hi-Y (pres. of
Halcyon)

Thane Lechlitner

Eileen Lennon
Observer
G. A. A.
Senior Friendship
Debate Club

Dorothy Lenz
Leaders' Club
G. A. A.
"S" Letter Girl
Senior Friendship

FIFTH ROW

Lucille Levy
G. A. A.
Soph. Friendship
Dramatics Club

Jeanne Lewis
Observer
Athletic Council
Senior Friendship
(pres. of cabinet)
Dramatics Club
(executive com.)

Rolph Lindsey
Football
Boys' Glee Club
A Cappella Choir
Whirlo Club

Catherine Lynch

Doris Markell
G. A. A.
Band
Orchestra (vice-pres.)
Senior Friendship
Dramatics Club

BOTTOM ROW

Robert Marshall
Football
Basketball
Baseball
Varsity "S" Club

William Martin
Hi-Y
Sociology Club
(vice-pres.)
Monitor Committee

Jeanne Mast
Jr. Red Cross
G. A. A.
Friendship Club

Ralph Mather
Hi-Y
History Club
Monitor Committee

Janet Mattson
Jr. Red Cross
Girls' Glee Club
Senior Friendship
Cinema Club



JUNE CLASS-1944

TOP ROW

Jack McAllister
Dramatics Club
Sociology Club
Chess and Checker
Club

Clifford McClurg
Football
Whirlo Club

Eileen McDonough
Friendship Club

Alan McGraw
Football
Track
A Cappella Choir
Hi-Y

Jean McGregor
Senior Friendship

SECOND ROW

Jean McKenney
G. A. A.
Soph. Friendship
Senior Friendship
Monitor Committee

Janice McLeod
G. A. A.
Soph. Friendship

Dan McNall
Varsity "S" Club
Boosters' Committee
Cheerleader
Hi-Y

Donna Jean McQueen
Jr. Red Cross
G. A. A.
Friendship Club

Marjorie Mealey
G. A. A.
Senior Friendship
Dramatics Club
Monitor Committee

THIRD ROW

Earl Mechtsimer
Band

Jane Metz
Jr. Red Cross
G. A. A.
A Cappella Choir
Senior Friendship

Douglas Miller

Marilyn Miller
Observer
G. A. A.
A Cappella Choir
Senior Friendship

Norman Miller
Cross Country
Track
Varsity "S" Club
Chess and Checker
Club

FOURTH ROW

Richard Miller
Honor Society
Rifle Club
Hi-Y (secy. of
Delphi)

Fred Mitchell
Jr. Red Cross
Hi-Y

Margery Moff
G. A. A.
Senior Friendship
Dramatics Club
Monitor Committee

Edward Molzan
Basketball Manager
Varsity "S" Club
Hi-Y
Monitor Committee

Robert Mooney
Reserve Basketball
Hi-Y
Spanish Club

FIFTH ROW

Edythe Mae Morgan
Whirlo Club

Draper Wilson Morris
Whirlo Club

Alice Murphy
Soph. Friendship
History Club
Monitor Committee

Jane Nelson
Athletic Council
(pres.)
Leaders' Club
G. A. A.
"S" Letter Girl

La Verne Niederlonder
G. A. A.
Soph. Friendship
Monitor Committee

BOTTOM ROW

Donald Noblett
Honor Society
Baseball
Varsity "S" Club
Rifle Club

Lucille Olsen
Shuttle
Observer
G. A. A.
Senior Friendship

Robert Pattie
Football
Varsity "S" Club
Band

Thomas Potton
Shuttle
Hi-Y
Mid-Year
(asst. bus. mgr.)
Monitor Committee

Marjorie Peek
Jr. Red Cross
G. A. A.
Mid-Year Play
Dramatics Club
(secy.)



JUNE CLASS-1944

TOP ROW

Robert Peters

Miles Phillips
Monitor Committee

Peggy Plank

Lawrence Pratt

Earla Mae Price
Swimming
Girls' Glee Club
A Cappella Choir
Senior Friendship

SECOND ROW

Thomas Quinlan
Art Club (pres.)
Honor Society
Jr. Foreign Affairs
(vice-pres.)
A Cappella Choir

Dora Rathmell
G. A. A.
Senior Friendship

Myra Reed
G. A. A.
Girls' Glee Club
A Cappella Choir
Senior Friendship

Carl Reese
Rifle Club (pres.)
Hi-Y

Richard Regan
Honor Society
Student Council
(pres.)
Junior Kiwanian
Football

THIRD ROW

Robert Reilly
Hi-Y
History Club

Barbara Reimholz
G. A. A.
Girls' Glee Club
A Cappella Choir
Senior Friendship

Bernice Rekittke
G. A. A.
Girls' Glee Club
(pres.)
A Cappella Choir
Senior Friendship

Harriette Riesiner

Betty Riggs
Observer
Debate Club (pres.)
Whirlo Club
(vice-pres.)
Jr. Foreign Affairs

FOURTH ROW

Edwin Robinson

Bernard Roche
Football

William Rogers
Camera Club

Kathleen Roege
Honor Society
Jr. Red Cross
G. A. A.
Senior Friendship

George Roller
Rifle Club
Movie Crew
Monitor Committee

FIFTH ROW

Doreen Rosenthal
Friendship Club
Sociology Club
Monitor Committee

Donna Patricia Ruoff
Honor Society
Leaders' Club
Band
Orchestra

Phillip Russo
Observer Ed. Staff
Basketball
Baseball
Hi-Y (vice-pres.)

Robert Saba
Honor Society
Shuttle (bus. mgr.)
Observer
Jr. Foreign Affairs

Doris Samson
Friendship Club
Spanish Club

BOTTOM ROW

Janet Schaeffer
Friendship Club

Patricia Schall
G. A. A.
Girls' Glee Club
A Cappella Choir
Senior Friendship

Lois Marie Seaver
Leaders' Club
Girls' Glee Club
A Cappella Choir
Senior Friendship

Sally Settles
G. A. A.
Soph. Friendship

Irene Shaw
Leaders' Club
G. A. A.
Senior Friendship
Monitor Committee



JUNE CLASS-1944

TOP ROW

Gladys Shontz
Drum Majorette
A Cappella Choir
Senior Friendship
History Club

Dorothy Siddaway
Jr. Red Cross
G. A. A.
Senior Friendship
Spanish Club (secy.)

Barbara Simmons
Senior Friendship
Modern Dancing
Leaders' Club
G. A. A.

Betty Smith

Mary Louise Smith
G. A. A.
Girls' Glee Club
Senior Friendship
Dramatics Club

SECOND ROW

Wayland Smith
Honor Society
(vice-pres.)
Shuttle
Junior Kiwanian
Swimming

William Snider

Marguerite Sniffen
Jr. Red Cross
Monitor Committee

Eleanore Sosno
Observer
G. A. A.
Senior Friendship
History Club

Betty Spence
G. A. A.
Senior Friendship
Monitor Committee

THIRD ROW

Carl Spreitzer
Hi-Y
Monitor Committee

Michael Stashower
Honor Society
Track
Band
Debate Club

Anne Stepanovich
G. A. A.
Senior Friendship

Martin Stevens

Jeanne Story
Leaders' Club
G. A. A.
"S" Letter Girl
Drum Majorette

FOURTH ROW

June Stuedell
Whirlo Club
G. A. A.
Jr. Foreign Affairs
A Cappella Choir

Joan Summers
G. A. A.
Aqua-Dux
Senior Friendship
Health Club

Boughn Swan
Swimming
Hi-Y

Evelyn Syrko
A Cappella Choir

Shirley Tober
G. A. A.
Senior Friendship
Spanish Club
Whirlo Club

FIFTH ROW

Joann Taylor
Jr. Red Cross
Leaders' Club
G. A. A.
"S" Letter Girl

Patricia Thomas
Leaders' Club
G. A. A.
"S" Letter Girl
Senior Friendship

John Thompson
Football
Varsity "S" Club
Rifle Club
Hi-Y

Julio Ann Thompson
Leaders' Club
G. A. A.
A Cappella Choir
Senior Friendship

Norman Thompson
Honor Society
Boys' Glee Club
A Cappella Choir
Hi-Y

BOTTOM ROW

Emrie Thoresen
Jr. Foreign Affairs
(secy.-treas.)
History Club
Debate Club

David Toomey
Track
Sociology Club
Monitor Committee

Glen Travers
Camera Club

Henry Tryon
Rifle Club

Dorothy Vicha
A Cappella Choir



JUNE CLASS-1944

TOP ROW

William Vivian
Student Council
Swimming
Varsity "S" Club

Donald Ward
Jr. Red Cross
Rifle Club
Hi-Y
Monitor Committee

Donald Warman
Observer
Monitor Committee

Lais Warnke
Honor Society
(secy.)
Observer Ed.-in-Chief
Swimming
Leaders' Club

Mariel Weaver
Observer
G. A. A.
Senior Friendship
History Club

SECOND ROW

Francile Weitz
Honor Society
G. A. A.
A Cappella Choir
Senior Friendship

Nancy Wensley
Senior Friendship
Sociology Club

Patricia Wensten
A Cappella Choir
Whirlo Club

Esther Werner

Leanore West
Dramatics Club

THIRD ROW

Jean Whalley
G. A. A.
Soph. Friendship
Cinema Club

Alice White
Swimming
G. A. A.
A Cappella Choir
(vice-pres.)
Whirlo Club

Donald White
Band
Boys' Glee Club
Dramatics Club
Whirlo Club

Harold White
Stage Crew Manager

Robert Whitmarsh
Basketball Manager
Rifle Club
Hi-Y
Camera Club

FOURTH ROW

Gordon Wiese
Rifle Club
Hi-Y
Stamp Club
Monitor Committee

Noel Wines

Ruth Woost

Billie Mae Worden
Observer
G. A. A.
Girls' Glee Club
Senior Friendship

Ralph Wuest
Reserve Basketball
Baseball
Tennis
Varsity "S" Club

BOTTOM ROW

Jack Wurts
Boys' Glee Club
A Cappella Choir
Camera Club
Whirlo Club

Hugh Young

Elizabeth York
G. A. A.
Band
Senior Friendship
Whirlo Club

Betty Zimmerman

THE UNDERCLASSMEN

by homeroom



CLASS INSTRUCTION

Al Murray and Roy Wisecup
"Wise" explaining a mechanical drawing
problem.

HOMEROOM 36

Back Row—Jim Guffey, Harry Kellum, Bob Joyce, Glen Kelleler, Jim Kane, Tom Lewis, Larry Klein, Roger Klatt.

Second Row—Jack Emig, Annagene Kingsley, Nancy Leare, Naomi Hutchings, Norma Kelso, Doris Johnston, Mary Lou Lennon, Joan Landis, Jane Lais.

First Row—Lois LaGanke, Joy Hansel, Mary Jane Humphrey, Alice Kondrat, Vera Jensen, Betty Kessler, Norma Hurst, Marcella Kall.



HOMEROOM 208

Back Row—Bob Spohn, Dave Skinner, Jack Slome, Bob Spratt, Don Sudbury, Bob Stratton, George Scoville, Jim Sweeny.

Second Row—Betty Smeltzer, Nan Settles, Marcia Mae Smith, Sarah Thomas, Janet Story, Virginia Tanno, Margaret Shank, Sally Short, Martha Stafford, Ann Story.

First Row—Anita Spetrino, Edna Sengo, Betty Schaefer, Joan Spurney, Dorothy Sutter, Margaret Stoll, Jean Marie Towle, Joanne Tilton, Charlotte Schacht.



HOMEROOM 39

Back Row—Harry Morton, William Merritt, Hendricks Osborne, John Matera, Romeo Pallante, John North, Peter Lograsso, Horton Matthews, Earl Miller, Jack Lally, Don Linton, Dick Lustig, Richard Haskin, Jerome Matz, John McGilvery.

Second Row—Bob Loomis, Ralph Orche, Richard Nixon, Lee McMillan, Joan Minadeo, Audrey Mott, Shirley Osborne, Anna McGregor, Vinna Manpen, Betty Maher, Jack Palmer, Gordon Reigelman, Bruce Miller, Joe Leamon, Jim Jarvie, Jerry DeVore.

First Row—Dolores Mulgrew, Betty McAlarney, Maxine Lechlitner, Jean Hubble, Bernadine Matish, Regina Scheidecker, Jeanette Nutting, Jackie Maes, Marion Lucas, Dorothy Murray, Jean Nedimyer, Lois Owens.





HOMEROOM 107

Back Row—Bruce Greek, Norman Brenne, Norman Hammerle, Dana Ketteler, Bill Bond, Joe Griffin, Dale Boyce, Dave Baxter, Jim Farrar, Ken Humer, Bill Cope, Bill Brandt, Wayne Groenstein, Lynn Donelan, Frank Colosi, Gerry Baldwin, Martin Stevens.

Second Row—Douglas Guy, Donald Ketron, Helen Devitha, Marilyn Hartman, Betty Alleman, LaVerne Immke, Jane Helmick, Jean Dabato, Margaret Corlett, Mary Hoffman, Jean Bollinger, Rita Kahn, Betty Wahner, Dolores Connors, Bob Collmer.

First Row—Ed Jusko, Jack Beutel, Gene Hartjen, Garnet Albrecht, Phyllis Blake, Barbara Jackson, Babe Christian, Marjorie Dennis, June Mackey, Jean Hayden, Alice Bogigian, Dolores Depenhart, Mary Zuckett, Shirley Deveraux, John Hannon.



HOMEROOM 28

Back Row—Bill Ballinger, Welborne Brevard, Ed Balogh, Gene Bratcher, Bob Blasko, Bob Bowerman, Tom Apthorp, Bud Boylan, Jim Atwell, Richard Allen.

Second Row—Keith Betler, Tim Craney, Dot Brooks, Dolores Albanese, Virginia Bova, Lois Balog, Dolares Brown, Mike Bibee, Dick Baumgartner.

First Row—Betty Anewalt, Reba Albert, Margaret Brightman, Jane Beal, Marilyn Baird, Elva Baier, Ruth Bartlett, Mary Jane Baldner, Janet Askue, Audrey Feldkamp, Norma Bennett.



HOMEROOM 38

Back Row—Ted Meridith, Burke Peterson, Bob Noack, Bill Mulhauser, Robert Mzik, John Pfeiffer, Richard Woost, Dick Maier, George Terwilliger, Jack Reimholz, Charles Meyer, John Palmer, Ernest Schultz, Richard Ripple, Bob Patch, Bill Nixon, Kirk Reid, Bob Parham.

Second Row—Evelyn Pattenson, Audrey Mattson, Dorothy Orr, Mary Morrison, Marie Mechtensimer, Beverly Nighman, Leona Thompson, Mary Lou Miller, Janet Pfeiffer, Miriam Pulford, Betty Philpott, Catherine Murphy, Marilyn Millner, Mozelle Terry, Charles Norton.

First Row—Sandra Nussel, Barbara New, Margaret Park, Adelaine Otto, Joy Tyler, Jewel Tyler, Grace Perna, Betty Morgan, Joan Miehl, Ann Murphy, Pearl Ornstein, Irene Oyster, Roland Patzer, Jim Price.

HOMEROOM 207

Back Row—Dave Reese, Dick Petti, Paul Phipps, Herb Pekarek, Douglas Miller, Dick Parsons, David Peterson, Don Minadeo.

Second Row—Laura Nichols, Lucille Morgan, Rosemary McNamee, Betty MacFayden, Virginia Overfield, Elaine Qualman, Margaret Oetjen, Helen Nolan.

First Row—Koharig Panosian, Jean Panza, Gloria Proffitt, Harriet Porz, Charles Nesbitt, Eleanor McCann, June Morkel, Audrey Miller.



HOMEROOM 32

Back Row—Jack Jacobson, Dick Whitlam, George Kadis, Louis Jacobs, Don Jones, Bruce Kemp, Al Kieselbach.

Second Row—Beverly Campfield, Jim Joyce, Roger Johnson, Rudy Kapps, George Keith, Bob Kelly, Ralph Joseph, Eileen Johnson.

First Row—Doris Junge, Katherine Gardy, Nancy Kelley, Ann Inman, Joyce Johnson, Gerry Kahne, LaVerne Lee, Shirley Johnson, Elva Keckler.



HOMEROOM 200

Back Row—Charles Rendlesham, Ralph Righter, Bob Brass, Phillip Pratt, Lynn Rennick, Bill Robbins, Ivan Pickens, Bob Perko, Jack Ress.

Second Row—Tom Hamm, Alma Reed, Mory Louise Satter, Marion Pauli, Shirley Rainger, Marilyn Petti, Joanne Peters, Barbara Roads, Donna Mae Price.

First Row—Betty Riggle, Betty Reich, Virginia Pettit, Mary Saba, Betty Ross, Dotty Pickett, Francis Rigel, Charlotte Paonsha, Stormy Robinson, Pat Rapp, Pat Pavlik.





HOMEROOM 309

Back Row—Louis Smith, Herbert Roth, Tom Weigle, Dick Ward, Bob Squire, Jim Wylie, Bob Stuedell, Larry Schaefer, Alan Spera, Merle Owen, Jim Shultz.

Second Row—Sam Piazza, Marilyn Welker, Clare Shifrin, Roslyn Van Emden, Carol Warren, Mary Schofield, Jean Powell, Marilyn Varcoe, Mae Volpe, Tom Pallad.

Front Row—Evelyn Zahig, Margery Wolkov, Evelyn Tabb, Marilyn Rothschild, Mary Sturrock, Jean Smith, Marian Rinear, Louise Murray, Rose LoPiccolo, Joan Wischmeyer.



HOMEROOM 304

Back Row—Eugene Fried, Frank Gold, Tom Monteith, Jim Hood, Roger Krebs, Bob Lind, George Mahoney, Bob Knebusch, Bob Keenan, Dwight McHugh, Kenneth Fromme, Richard Jones.

Second Row—Stanlee Fried, Charles Klagge, Rae LeBow, Margaret Miller, Geraldine Lyons, Betty Herrmann, Gerry Kish, Lois Wood, Ken Hagg, Ronnie Brennan.

Front Row—Doris McDonegal, Florence Moore, Juanita Hall, Betty Leatherow, Edith Lebensart, Edna Graham, Virginia Shampay, Kathryn Kenniy, Jean Campbell, Eleanore Gould, Juanita Foust.



HOMEROOM 306

Back Row—Don Zalud, Chris Williams, Jim Walsh, Jack Tryon, Roland Wilder, Jack Williams, Howard Whitelaw, Don Visci.

Second Row—Morton Wieder, Glen Mitchell, Alton Veil, Dick Walters, Robert Bacon, Robert Van Vliet, Neal Vincent, Lyle Towne.

Front Row—Kathryn White, Marilyn Warman, Dorothy Walko, Rita Stapleton, Anna May Wittig, Alice Jean Wiseman, Pat Young, Mary Wisecup, Dick Stroeter.

HOMEROOM 33

Back Row—Bob Darlin, Elmer Collins, Jack Clark, Alfred Davenport, Raymond Conkle, Henry Ciesicki, Linden Cockroft, Bob Cunningham, Bob Cubberly, Joe D'Arco, Robert David, Bill Decker.

Second Row—Vido DiLiddio, Patrick Carlotto, Virginia DeBoer, Diane Cassell, Jacqueline Cary, Pat Corrigan, Harriet Tefft, Sara Jane Cole, Elaine Danielson, Rose Capretta, James Carroll, Frank Clark.

First Row—Dorothy Di Vincenzo, Doris Coe, June Drees, Marilyn Cosley, Marilyn Cave, Tommie Collins, Pat Deahl, Betty Derhammer, Pot De Garmo, Meryl Cary, Eleonor Diehl, Eleanor Dobrinich.



HOMEROOM 8

Back Row—Kenyon Clapp, Walter Beach, Jack Bradshaw, Ken Bohanon, Dave Baker, Ed Barrett, Ed Breedon, Arthur Barko, Bill Beck, James Benedict, William Betz, Carl Brubaker.

Second Row—Kenneth Bash, Dan Avis, John Allen, Deon Barnicle, Rosemary Campbell, Madonna Adams, June Cadiou, Yvonne Cameron, Audrey Baus, Marjorie Burrough, Dick Baker, Albert Borazanian, Gerald Berger.

First Row—Helen Burroughs, Margy Anstey, Helen Caine, Phylliss Connor, Louise Bibee, Esther Bellas, Margaret Baker, Dorothy Bukovac, Lazelle Brazie, Ruth Bender, De Maris Reider, Kay Bevacaque, Sally Ann Green.



HOMEROOM 35

Back Row—Bob Hart, Karl Green, Ted Gramines, Dave Gebhart, Gilbert Gumta, Vernon Emerman, Jack Hollingsworth, John Holliday, Irving Lindeman, Jack Hill, Bill Hanawalt, Bill Gardner.

Second Row—Bob Wensley, Bill Fife, Charles Gockel, Peggy Holmes, Janet Fort, Dawn Gibson, Lois Flannigan, Katherine Fry, Garth Griffith, Paul Hehr, Ralph Ehrenbeit.

First Row—Carol Hoyt, Gertrude Hoffman, Joan Hitchcock, La Rue Geiger, Louise Harrison, Dorothy Hallob, Betty Green, Helen Hennie, Doris Jean Hines, Mary Hoose, Helen Hamilton.





HOMEROOM 302

Back Row—Jean Ward, Bruce Younker, Jack Wason, Dick Wiltshire, Charles Weitz, Mary Lou Woodley.

Second Row—Renee Young, Isabelle Todd, Pat Welch, Marjorie Wilder, Jean Secunde, Kathryn Waters, Genevieve Wagner.

First Row—Lois Warren, Nancy York, Joyce Wulf, Corrine Wissman, Marie Zorn, Carolyn Wolf, Elaine Zeve.



HOMEROOM 206

Back Row—Jasper Foster, George Feher, Bob Delocis, Dick Denham, Dick Ede, Bob Erdley, Jim Decker.

Second Row—Bob Davies, Joyce Buxton, Elaine Caldwell, Pat Dooley, Peg Conant, Don Coletta, Bob Cardoza.

First Row—Helen Conway, Jean Ehrenbeit, Connie Evans, Ruth Cleaveland, Grace Martin.



HOMEROOM 202

Back Row—Dean Barndt, Bob Barton, Joe Bullington, Roger Brusse, Sherman Berne, Richard Aul, Dave Armington.

Second Row—Don Beard, Erma Abazia, Sonia Blum, Lois Bartlett, Margie Bramley, Mary Benson, Bill Ager.

Front Row—Vera Harrison, Dorothy Kostac, Pat Bennett, Lois Baughman, Nadine Brown, Donna Bishop.



HOMEROOM 30

Back Row—Edwin Church, William Crenshaw, Richard Carlson, Robert Cheetham, Dean Cameron, Harold Corrigan, Tom Brumley, Dick Di Bartolo, Armand Di Lellio, Bob Burton, Jack Hively.

Second Row—Donald Corlett, Tom Bury, Bridget D'Amore, Dorothy Caddick, Alma Davenport, Marialice Ainsworth, Mary Cunningham, Dorothy Carome, Jane Carnahan, Wynn Cochran, Beverly Campfield, Norman Diamond, Charles Christy.

First Row—Violet Cola, Elaine Cave, Sue Carran, Mary Lou Dimling, June Cameron, Martha Chubbuck, Betty Denslow, Alice Copeland, Janet Consla, Carrie McKinney, Madeline Di Franco, Irene Keefe, Eleanor Carlson, Helen Campbell.



HOMEROOM 31

Back Row—Dan Dwelle, Leonard Portman, Tom Hageman, Tony Donofrio, Ralph Doesburg, Dave Fisher, Robert Holtz, Jack Hoffman, Sam Wilson, Bob Gottron, Mervyn Friedman, Ray Geordt, Gene Woodson, Arthur Greenwood.

Second Row—Lloyd Immke, Anna Di Sylvester, Bob Ericson, Betty Gumto, Charlotte Harris, Pat Hachtel, Virginia Gilkey, Jean Flor, Shiralee Grey, Marjorie Ice, Barbara Eicker, Alice Fitzgerald, Lorraine Francioso, Jean Doerner, Jane Forsberg, Shirley Gill, Charles Gerscheski, Bob Finkler.

First Row—Gloria Ferro, Harriet Draker, Lois Horan, Lois Dopslof, Ruth Gage, Betty Lape, Violet Gertz, Marilyn Hunt, Marilyn Frock, Marian Herron, Janet Hitchcock, Joan Huettich.



HOMEROOM 37

Back Row—Charles McCoy, Robert McDowell, Jerry McCarthy, Tom La Valle, Dick Lindsey, Dwayne Locher, John Nashu, Dick Swartzlander, Bob Lanese.

Second Row—Doris Magee, Mildred Lenk, Elaine Lohrey, Carmelita La Cava, Nadine Hartford, Ann Lynch, Doris Luth, Dave Lang, Ronald Knopf.

First Row—Rita McShane, Corinne Mosher, Doris Lipstreu, Eileen McCarthy, Alice Long, Arlyne La Ganke, Dot Lebow, Doris McKechnie, Mae Friel, Mary Stough.



HOMEROOM 16

Back Row—Ernest Czika, Don Moore, David Ritchie, Tom Mooney, Burney Magneson, Jim Reimholz, Ray Godfrey.

Second Row—Mary Richter, James McDonough, Bill Edwards, Richard Rhoa, Bert Lisy, Shirley Hodge.

First Row—Gloria DuPraw, Betty Richardson, Harriet Carran, Kathleen Deinhart, Kate Seaman, Eileen Cline.



HOMEROOM 22

Back Row—Joe Schiciano, Harvey Schach, Robert Shalala, William Brady, Jack Brsnan, Robert Boyd, Leonard Schneider.

Second Row—Ruth Russ, Phyliss Shields, Elizabeth Sladik, June Ryan, Evelyn Schmitz.

First Row—Lois Siller, Edythe Barlow, Jean Simon, Lois Schmunk, Marjorie Sachs.



HOMEROOM 26

Back Row—Richard Steiger, Arthur Stahler, Dick Smith, Richard Sneller, William Soukup, William Tubman.

Second Row—Charles Streater, Lois Hess, William Smith, Sheldon Veil, Betty Verburg, Morris Barton.

First Row—Mary Foster, Ruth Vaughan, Marilyn Smythe, Vivian Wilkie, Melvina Takacs.



WHAT WE HAVE TRIED TO DO

As a pictorial and printed record of the aims of Shaw High School, the 1944 Shuttle comes to its readers. During this school year of 1943 and 1944, students and teachers have tried to accomplish many things. It is the purpose of the Shuttle staff to summarize some of these efforts.

First, Shaw has tried to be worthy of the late E. C. Offinger's long service and loyalty to the school.

Second, Shaw has tried to take full advantage of its many opportunities afforded by a sympathetic school board and administration.

Third, students have tried to look attractive.

Fourth, they have tried to "belong" to the school by associating themselves with worthwhile extra-curricular activities.

Fifth, the student body has tried to focus much of its attention on the duties of a school in a war world to keep the torch of freedom and education alight.

The book is divided into five sections, each depicting one of the aims of Shaw High School during the past two semesters.

Sophomore team.



VISITORS	0
SHAW	20
DOWN	1
YDS TO GO	10

Football score board.

Bill Vivian, Ralph Barton, Bud Doyle, Paul Forquer, Tom Izant, Bob Barton, Don Fortlage, Pat Smith.



Bert Boyle.

Willie Hart.



Doc Vivian (in background) Bob Barton, W. P. Smith.

Lakewood game—
Doc Vivian



Bud Doyle, Bill Elder—
(Breaststroke).

100-yard free style—
Tom Izant, Paul Forquer.



Hirohito Wall.



SPORTSMANSHIP



Left to Right. **Back Row**—Willie Hart, Dick Petti, Dick Sneller, Bob Parsons, Bob Collmer, Dick Lindsay, George Singer, Bob Blasko, Bill Cope, Bob Suydam, Don Gentile, Don Minadeo, Ralph Vara, Bill Meade.

Second Row—Tony Donofrio, Chuck Nesbitt, Ted Weil, Larry Schroeder, Herb Pekarek, Jim Farrar, Dave Baxter, Shel Veil, Bill Barclay, Dick DiBartolo, Jim Gough.

Front Row—Richard Nixon, Paul Daly, Steve Regan, Dick Regan, John Thompson, Bob Martin, Howie Schell, Dick Collins, Bob Sampson, Max Gillam, Bob Pattie, Bill Bond.

FOOTBALL

BATTLERS OF THE GRIDIRON

Under the guidance of Coach Marty Loftus, the Shaw eleven battered and hammered its way to three victories, four ties, and two losses, to take fourth place in the Lake Erie League standings.

Coach Loftus used more of a running attack this season than in any other year. Although playing against stiff opposition, the team showed the same fine spirit that has always made it superior.

The Cardinals defeated East 20-0, Shore 32-6, and Heights 34-7; tied Collinwood 0-0, Elyria 0-0, East Tech 7-7, and Shaker 6-6; lost to Lorain 25-14 and Lakewood 27-0.

Outstanding players of the season were Howard Schell, William Hart, Ted Weil, and Jim Farrar.



VICTORY QUEEN

Here Al Murray presents Mary Bigalke as Victory Queen to those who attended the Shaw-Heights game.



Coach "Marty" Loftus



Assistant Coach
"Doc" Vivian

FOOTBALL QUEENS



QUEENS, SMILES, AND ORCHIDS

Jeanne Lewis Mary Bigalke Betty Evans
The football queens smile at the Heights
game. The orchids were pretty too.



PAUL DALY



CHUCK NESBETT



BILL BARCLAY



TED WEIL



JOHN THOMPSON



BOB SUYDAM



BOB MARSHALL



BOB MARTIN



JIM FARRAR



MAX GILLAM



HOWIE SCHELL



DICK COLLINS



LARRY SCHROEDER

GEORGE SINGER



Football Scores			
Shaw	20	East 0
Shaw	0	Collinwood 0
Shaw	0	Lakewood 27
Shaw	7	East Tech 7
Shaw	0	Shaker 0
Shaw	14	Lorain 25
Shaw	34	Heights 7
Shaw	32	Euclid Shore 6
	<u>107</u>		<u>72</u>



BILL PATTIE



BOB JAMPSON



HERB PEKAREK



DICK SNELLER



RALPH LINDSEY



TONY DONOFRIO



JIM GOUGH



DICK PARSONS



WILLIE HART



SHeldon VEIL



DICK REGAN



DAVE BAXTER



BILL COPE



STEVE REGAN



FOOTBALL MANAGERS

Richard Nixon, Bill Bond, and Bill Meade pose for their pictures as football managers for the 1943 season.



Back Row—Bob Whitmarsh, Ed Molzan, Jack Clark, Don Linten, Ray Conkle, Dave Baker, Jim Ennis, Dean Barndt, Alan Spero, Bob Stratton.

Second Row—Bob Keenan, Willie Hart, Dave Baxter, Bert Boyle, Herb Pekarek, Jim Farrar, Ted Weil, Bob Marshall, Phil Russo, Coach Roy Wisecup.

Front Row—Ralph Righter, Don Visci, John North, Bob Burton, Bob Parham, Jim Corbett, Bob Kelly, Bud Boylan, Jack Palmer.

BASKETBALL

CAGE CHAMPS

Sixteen wins, two defeats. This was the amazing record compiled by the Cardinal quintet in all season and district games. By defeating Lorain, Lakewood, Shaker, and Elyria twice and Heights once, the Shaw hoopsters copped the Lake Erie League championship with a record of nine wins against one defeat.

The North Eastern Ohio district competition was next on the slate. Maple Heights, Willoughby, and Euclid Shore all fell before the powerful hoopsters, who lost to the thrice-defeated Heights Tigers in the finals, dropping a chance in the regional competition at Youngstown.

High-scoring Bert Boyle, with 195 points led the cagers and was superbly supported by Forwards Herb Pekarek, Phil Russo, and Ted Weil.

Stellar defensive play by Captain Dave Baxter, Jim Farrar, and Willie Hart put the finishing touches on another championship squad.



Coach Roy Wisecup



Bob Burton



Bob Parham



Bob Keenan



Jim Corbett



Ted Weil



Herb Pekarek



Bert Boyle



Dave Baxter



Willie Hart



Bob Marshall



Jim Farrar



Bob Whitmarsh

Ed Molzan



Phil Russo

BASKETBALL SCORES

37	Collinwood	26
42	Lakewood	33
35	Latin	34
37	Shaker	19
31	Lorain	25
34	Elyria	28
44	Heights	54
52	W. R. A.	26
35	Lakewood	31
44	Shaker	34
33	Lorain	30

46	U. S.	35
26	Elyria	16
36	Heights	30

Tournament

45	Maple Heights	16
41	Willoughby	25
50	Euclid Shore	35
33	Heights	37

CLAY COURT RACKETEERS

"They may not have all the finesse, but they have all the fight in the world."

This statement was made about the athletes on Shaw High's tennis team.

Two defeats, by Shaker and Cleveland Heights, was the season record for the Black and Red squad during 1943. Nevertheless, the "racketeers" gave a good account of themselves.

Lettermen were Wayland Smith (captain), Charles Christy, Bob Gottron, Allan Levine, Herbert Roth, and Bill Zimmerman.

Outstanding "singles" players were Wayland Smith and Bill Zimmerman, while "doubles" honors went to Allan Levine and Herbert Roth, and Charles Christy and Bob Gottron.

TENNIS.....



BILL ZIMMERMAN SWINGS THE RACKET

Bill Zimmerman warms up before a game.



Back Row—Pat Smith, Kirk Reid, Al Levine, Bill Zimmerman.
Front Row—Norman Diamond, Bud Christy.



Back Row—Al Nottage, Dick Ward, Bob Sivik, Dick Denham, Paul Forquer, Bob Martin, Tim Craney, Al Murray, Norm Miller, Coach E. C. Offinger.

Second Row—Dave Booth, Bill Blasko, Joe Hartman, Walter Funk, Jack Wahlstrom, Wilbur Moyer.

Front Row—Dave Lloyd, Dick Kappus, Matthew Biscotti, Mike Stashower, Rudy Kapps, Ralph Vara, Jim Maestrangelo, Arle Lumadue.

TRACK

MEN OF THE MARATHON

Led by Joe Hartman, captain, and coached by the late E. C. Offinger, the track team made a fine showing in the spring of 1943, even though victories were few. Bowing to Cleveland Heights 70-48, and to Shaker Heights 73-44, the cindermen held Western Reserve Academy to a tied score 59-59. Five schools participated in the Lake Erie meet, where Shaw took fourth place.

Graduating members of the team who received letters were Keith Carrier, Dick Kappus, Arle Lumadue, Jim Maestrangelo, and Jack Wahlstrom. Lettermen who are back this spring trying, for "Offy's" sake, to make it the "best season ever" are Matthew Biscotti, Tim Craney, Paul Forquer, Walter Funk, John Harmon, Joe Hartman, Rudy Kappo, Bob Martin, Norman Miller, Wilbur Moyer, Al Murray, Bob Sivik, and Michael Stashower.





Back Row—Randy Erdley, Erwin Gerstenberger, Don Fortlage, Coach "Doc" Vivian, Bill Cumler, Bob Squire, Ernie Hutton, Frank Gold, Dick Wiley.

Second Row—Bob Cumler, Dave Ritchie, Bob Barton, Pat Smith, Tom Weigle, Tom Montieth, Bill Barker.

Front Row—Bud Doyle, Paul Forquer, Louis Lehmann, Tom Izant, Ralph Barton, Bill Vivian, Bill Blauman, Bill Elder.

SWIMMING

Hitting the high point of the season when they defeated Lakewood, the Lake Erie League champions, the Shaw tankers successfully stroked their way to second place in the Lake Erie league.

The Cardinals were led by Senior Tom Izant, Cleveland's 100-yard free style champion, who gathered 65 points. Nine other seniors, Ralph Barton, Don Fortlage, backstroke; Bill Vivian, Pat Smith, Paul Forquer, Bob Barton, and Bill Blauman, free style; and Bud Doyle, Bill Elder, breaststroke; consistently piled up enough points to carry the team to six victories in nine dual meets.

Three lettermen will return to form the basis for Coach "Doc" Vivian's next varsity: Sophomore Bob Cumler, who captured the Cleveland 50-yard free style championship in his first year; Tom Weigle, breaststroke, and Bob Barton free style.





SWIMMING PICTURES

Doc Vivian and Bill Vivian.

Louis Lehmann and David Ritchie.

Bob Barton and Ralph Barton.

Tom Izant, Don Fortlage, Pat Smith.

Paul Forquer, Tom Izant, Bill Cumler, Bill Vivian.

Bill Blauman, Paul Forquer, Bud Doyle.



Back Row—Willie Hart, Dave Baxter, Bob Bradford, Jack Shaw, Chuck Russo.

Front Row—Ray Warshowsky, Bill Olson, Jim Farrar, Dick Collins, Wilbur Hillock.

BASEBALL



CITY CHAMPIONS

Managed by Joe Ferro and Don Noblett and under Coach Roy Wisecup's skilful leadership, the Shaw High nine forged ahead to complete a highly successful season, victorious in twelve games and vanquished by superior forces in only two.

The Cardinals represented the district in the state tournament at Columbus, where they were nosed out by Springfield 3-2.

In the playoffs for the city championship, the hard-hitting Shawites defeated Shore; and in the final championship game at League Park, Coach Wisecup's boys trounced John Adams, 3-1.

Letterman Dick Collins was the team's leading hitter, with an average of .397. Other players who won letters were: Dick Allen, Dave Baxter, Bob Bradford, Tony Donofrio, Jim Farrar, Willie Hart, Willie Hillock, Charles Russo, Jack Shaw and Ray Warshowsky.



HOLIDAY FOR SPRINGS

Cheerleaders limber up. (front on ground) Alan Gross, (third from front), Ray Todd flips Carl Drago. Other cheerleaders are Dan McNall, Lenny Lubline, and Gale Johnson.



HIGH STEPPERS

Gladys Shontz, Helen Bell, Dolly Walsh and Lois Wood keeping up morale at the football games.



Elaine Qualman
Isabelle Thompson

Sally Hammond

Jeanne Lewis

Betty Herrmann

Ruth Russ

Jean Hardy

Betty Ketteler

Joan Brown

Miss Betty French

Corrine Wissman

Alice Long
Virginia Wavro

Jean Goncher

ATHLETIC COUNCIL

Leaders, Rules and Fair Play

Leadership, sportsmanship, and ability are the characteristics by which the seventeen Athletic council members are chosen. To lead girls with pep and vigor, to be a good sport win or lose, and to have ability in the sport elected for were qualities which must be possessed by each girl.

A. C. girls kept track of all after-school teams and selected the girls to play in tournament games. Points towards "S" letters also were recorded by them.

The council has social activities of its own, too. At Christmas time a party was held at the home of one of the members, and in the late spring the annual picnic was held at Sleepy Hollow.



Miss Betty French,
Girls' Athletic Director

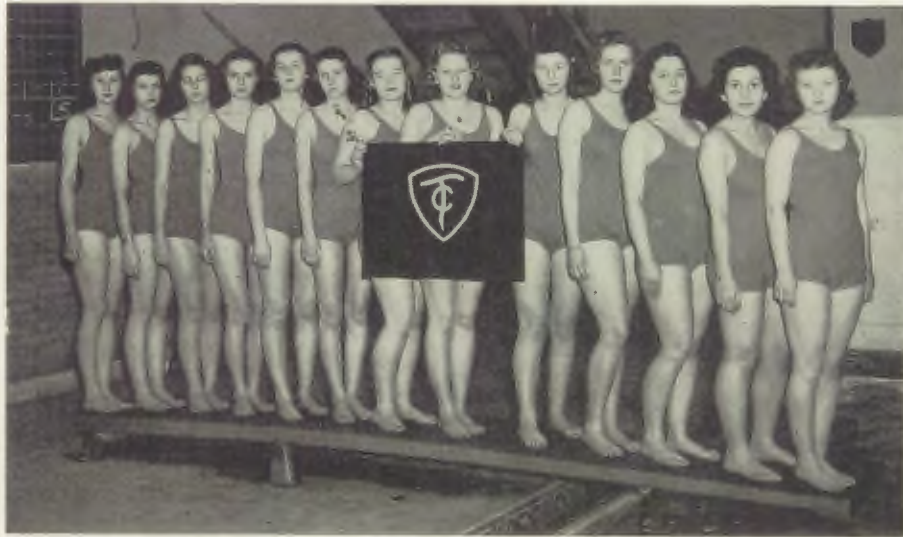
GIRLS' SPORTS

BASKETBALL,
VOLLEYBALL,
SWIMMING ...



MERMAIDS FROLIC

Open house guests watched (front to back) Iva Knight and Pat Baldwin, Louise Murray and Connie Evans, and Pat Young and Janice Lloyd swimming tandems.



TARPON

Left to right—Gloria Elliott, Beverly Nighman, Janice Lloyd, Joan Summers, Leila Davies, Jean Clark, Jane Nelson, Iva Knight, Eleanor Sosna, Janice McLeod, Lois Warnke, Adele Goldberg, Sally Hammond.

TARPON CLUB

TARPONIANA

A most successful year was ended by members of Tarpon Club at a Sea Circus May 14. The program had begun when members of the Heights girls' swimming club invited Tarpon members to a splash party on September 28.

The aim of the club is to perfect members' swimming. Tryouts are held every semester, when 10A, 11B, and 11A girls may join, provided they can skilfully swim ten laps and do a surface dive. Meetings are held every other week when the girls swim. At every meeting two girls plan a new formation.

In addition to holding regular meetings, the girls sponsored an inter-class swimming meet with the Aqua-Dux; but they take no active part in meets with other schools. This year the girls planned to have black suits and red emblems.

The officers this year are Janice Lloyd, president; Beverly Nighman, vice-president; Iva Knight, treasurer; and Esther Hisey, secretary.





LIFESAVING

Left to right—Gloria Elliott, Pat Baldwin, Iva Knight, Ruth Bartlett, Jean Clark, Pat Gallagher, Corrine Wissman, Marie Zorn.

GIRLS' LIFE SAVING

SENIOR LIFE-SAVING

The Senior life-saving classes finished the year's activities with the largest number ever enrolled. Members may now be sixteen years old or a junior in school.

All girls must pass a test before they are eligible for the senior life-saving classes. According to Miss Betty French, swimming instructor, the course is difficult, but the majority pass.

These girls have proved that they are capable of taking over jobs left vacant by men going into the service. Six of the girls had life-guard jobs during the summer.

The girls who were members last year acted as assistant teachers this year. They helped Miss French teach the new life savers. By this method of working together, the senior life savers have brought the year's work to a satisfactory close.



JACK KNIFE DIVE

Marion Rinear



Back Row—Dot Lebow, Joan Specht, Dorothy Brooks, Lois Siller, Lois Warnke.

Third Row—Eleanor McCann, Virginia Ault, Jane Carnahan, Janet Askue, Phylis Arnold, Wynn Cockran, Sandra Nussel, Joyce Johnson, Marilyn Barnhart, Sally Hammond.

Second Row—Elaine Qualman, Marilyn Hartman, Stormy Robinson, Dot Siddaway, Isabelle Thomson, Alice Scharlotte, Jean Beal, Joann Taylor, Ann Inman, Betty Morgan.

First Row—Shirley Russell, Joan Finn, Renee Young, Doris Lipstreu, Jeanne Lewis, LaVerne Christian, Dot Lenz, Iva Knight, Nancy Brennan.

MODERN DANCING

Every Tuesday at 3:15 P.M. the modern dance group met this past school year. Starting first with exercises to limber up, the girls continued the hour doing leaps and elevation steps and then working on dances.

Headed by Jeanne Lewis, members concentrated almost entirely the second semester on their main project, a program which was presented May 12. This program consisted of a few rhythm techniques followed by four dances arranged to music from "Carmen." The main idea of the dances was to represent the seasons of the year.

The group will be headed next year by Isabelle Thomson. A new constitution has been made and approved by this last year's modern dance group which limits the membership and gives a definite outline for future try-outs.

RIDING CLUB



Back Row—Marialice Ainsworth, Catherine Davidson, Barbara Goodwin, Esther Hisey, Gloria Elliott.

Middle Row—Barbara Bottenus, Joy Hansel, Carol Hoyt, Joan Brown, Martha Dennis, Betty McFadyen.

Front Row—Alma Davenport, Alice Copeland, Betty Wagner.



Back Row—Dot Hoover, Pat Gallagher, Sally Hammond, Esther Hisey, Joy Lawrence, Marilyn Barnhart, Jane Beal, Arlene Davidson.

Third Row—Shirley Russell, Marilyn Hartman, Janice Lloyd, Elaine Benedict, Joann Taylor, Ruth Russ, Joan Harrison, Betty Faulds, Gloria Elliott.

Second Row—Irene Wood, Barbara Bottenus, Iva Knight, Jean Clark, Sybil Kopp, Elaine Qualman, Joyce Johnson, Jeanne Lewis, Ruth Bartlett.

First Row—Catherine Davidson, Pat Baldwin, Lois Siller, Carolyn Satter. Sandra Nussel, Dot Lenz.

"S" LETTER GIRLS

Perhaps the most desired award given to girls is the "S" letter. Every sport that a girl participates in gives her points towards it. To obtain a small "S" letter, 350 points are needed and for a big one, 750 points are necessary.

Sports such as modern dancing, volleyball, and basketball give 75 points per semester, baseball 50, referee 25. Winter sports give 3 points an hour and every horseback ride 10 points.



GYM LEADERS

Back Row—Joyce Johnson, Barbara Bottenus, Pat Baldwin, Joan Brown, Betty Verburg, Gloria Elliott, Catherine Davidson, Martha Stafford, Marilyn Church.

Third Row—Marilyn Miles, Betty Herrmann, Doris Magee, Audrey Mattson, Pat Hachtel, Betty Derhammer, Loverne Christian, Jean Smith, Lois Siller, Virginia Smith.

Second Row—Renee Young, Sandra Nussel, Ruth Russ, Joan Harrison, Dot Lenz, Ruth Bartlett, Sybil Kopp, Betty Faulds, Elaine Qualman.

First Row—Violet Cola, Jeanne Story, Jean Hapeman, Pat Gallagher, Jean Disbro, Sue Riggs, Marie Zorn.

GYM LEADERS PLANNED TWO HITS

Leadership, dependability, interest and participation are the qualities all girl gym leaders must have before being chosen by Miss Betty French.

Not only must the girl possess these characteristics, but she must also have completed at least one semester of gym at Shaw. Clean crisp white suits distinguish these girls from others in the class who wear green.

A club was formed by the leaders to meet every first and third Wednesday of the month at 3:15 in 107. Not only do members discuss topics and problems of current interest, but they also plan one big event for each semester.

Last fall, they sponsored the annual Posture Contest, which Iva Knight won. This spring the girls planned an amateur show.



YALE-HARVARD VOLLEYBALL

Back Row—Sybil Kopp, Mary Hoffman, Joy Lawrence, Gloria Elliott, Jean Goncher, Catherine Davidson.

Second Row—Lois Warnke, Gertrude Langdon, Patricia Gallagher, Betty Hermann, Betty Faulds, Louise Murray, Marion Rinear.

First Row—Dorothy Hoover, Barbara Bottenus, Elaine Qualman, Joan Harrison, Joann Taylor, Jean Clark.

YALE-HARVARD VOLLEYBALL

VOLLEYBALL SEASON TERMINATED

By Yale-Harvard Game

With the beginning of volleyball practice also start the preparations for the Yale-Harvard game. Each Tuesday and Thursday found nearly fifty girls hard at work practicing for the event.

All-star players were picked by the team captains and Athletic Council members. The players in turn elected Barbara Bottenus as leader of the Harvard team and Joann Taylor as captain of the Yale team.

This year Yale won by a very close score. Every girl who participated in the game earned points toward her "S" letter.

ARMY-NAVY

Ever since 1931 the Army-Navy basketball game has been an annual event looked forward to by all athletically inclined girls.

As in former years sixteen girls out of nearly fifty who tried out were picked by the head of the basketball division and her assistant to play in the game.

The game is nearly always a closely contested one, and this year's was no exception. The Army team defeated Navy, 24-13.

ARMY-NAVY BASKETBALL



ARMY-NAVY BASKETBALL

Back Row—Sybil Kopp, Betty Verburg, Joy Lawrence, Betty Herrmann, Lois Hess, Barbara Bottenus.

Second Row—Lee Thompson, Ruth Bartlett, Shirley Benson, Olive Boyd, Barbara Rhodes, Carolyn Satter.

First Row—Alice Long, Betty Faulds, Corrine Wissman, Dorothy Hoover, Catherine Davidson, Jeanne Story.



Back Row—Audrey Mattson, Pat Baldwin, Leila Davies.
Second Row—Iva Knight, Leona Thompson, Lois Gerstenberger, Connie Evans, Louise Murray.
Front Row—Elaine Qualman, Jean Cormack, Virginia Bova, Lois Schmunk, Marie Zorn, Marion Rinear, Pat Gallagher.

AQUA-DUX

SWIMMING MADE EASY

Primary purpose of the Aqua-Dux group is to assist girls in swimming classes. Three girls are assigned to every class, with one at the head of each section. The captains exchange positions at the end of every six-week period so that each has a chance to instruct every group.

Membership of this club is strictly limited to those who have already participated in a semester of advanced swimming, with a grade of B or better. They must have received instruction in Life Saving or be actively engaged in that program.

In the fall of the year Aqua-Dux sponsors a swimming meet for all girls with competition between classes. Last fall first position was shared by Jacqueline Maes and Patricia Young.

This season a new activity was added to the list, that of serving the Red Cross by teaching children of elementary school age to swim. The first class began on February 11, comprised entirely of boys.



F E L L O W S H I P



STUDENT COUNCIL (First Semester)

Back Row—Janice Lloyd, Don Minadeo, Bill Brandt, Tom Weigle, Ray Smalley, Pat Smith, Alice Scharlotte.

Second Row—Sally Hammond, Esther Hisey, Jean Hardy, Mary Bigalke, Elaine Qualman, Loverne Christian, Jean Smith, Jean Cormack.

First Row—Lois Siller, Bill Barclay, Ray Todd, Wayne Moorhead, Larry Schroeder, Isabelle Johnson, Virginia Ault.

STUDENT COUNCIL



OFFICERS OF STUDENT COUNCIL

Left to right—Bill Brandt, Vice President; Jean Taylor, Secretary; Dick Regan, President; Bob Burton, Treasurer.

STUDENT COUNCIL ACCOMPLISHMENTS

Beginning the school year, Mary Bigalke, secretary of the Student Council, backed a campaign to discourage eating in the show. The council's idea is to build a reputation for the school.

Since it had formerly decided that something should always be done to commemorate December 7, Isabelle Johnson, Bill Barclay, and Larry Schroeder headed the committee for a radio fund for homecoming heroes. The Student Council matched what was given that day by the student body. The total sum was \$432.98.

With the second semester began the new monitor system. Volunteers were no longer taken, but only those students recommended by the homeroom teachers were accepted.

During the first half of February the Student Council managed the sales of war bonds and stamps. Bill Brandt, vice-president, was chairman of this committee.



STUDENT COUNCIL

Back Row—Don Minadeo, Ken Mozan, Pat Smith, Larry Schroeder, Don Fortlage, Max Gillam, Tom Pallad.

Second Row—Esther Hisey, Janice Lloyd, Elaine Qualman, LaVerne Christian, Jean Smith, Jean Cormack, Lois Gerstenberger, Connie Evans, Iva Knight.

First Row—Lois Siller, Mary Kay Bonsteel, Jean Taylor, Bill Brandt, Dick Regan, Bob Burton, Sally Hammond, Alice Scharlotte, Virginia Ault.

STUDENT COUNCIL HOMEROOM REPRESENTATIVES

Each new semester, when the Student Council is formed, a representative is chosen from each homeroom.

Their purpose is to inform the Faculty of the students' wishes and ideas.

Meetings are held every Monday morning during the homeroom period, so that all members may attend. The faculty adviser of this group is Miss Anna M. Soutar.

Many various activities are handled by committees, such as the registration book in the office for Shaw men, in the Service, to sign. And at the present moment they are selling War Bonds and Stamps in their respective homerooms to boost Shaw's effort in the Fourth War Loan. Another important job, which is Student Council managed, is the school monitor system. Order is kept in the noon movies and all through the halls by conscientious monitors placed in various positions.

Take pride in your Student Council, Shaw students, and support its twenty-eight members who do their share in making Shaw one of the finest schools in these United States.



HOMEROOM REPRESENTATIVES

Back Row—Bob Davies, Bill Vivian, Herbert Pekarek, Sheldon Veil, Kenneth Humer, Walter Funk.

Middle Row—Marilyn Robinson, Dorothy Siddaway, Jean Smith, Nick Trivisonno, Ralph Orche, Bob Hahn.

Front Row—Corrine Wissman, Geraldine Kahn, Harriett Carran, Jean Doerner, Alice Long, Beverly Avis.



MONITOR AND PUBLICITY COMMITTEES OF THE STUDENT COUNCIL

The Student Council Monitor Committee has charge of hall guards. Its members the first semester were Ray Todd, chairman, and Larry Schroeder; and it consisted the second semester of Bill Brandt, chairman, and Monitor Captains Delores Albanese, Jean Smith, Ken Bohanon, Don Fortlage, Pat Smith, Jean Cormack, and John Davis.

The Publicity Committee of the Student Council, consisting the first semester of Lois Siller, chairman, Loverne Christian, and Jean Smith, and whose members the second semester were LaVerne Christian, chairman, Don Fortlage, Jean Smith, and Lois Siller, handled the publicity for the Student Council Barn Dance, making several broadcasts to publicize this event after it was planned by the Dance Committee.

The main activity of the Publicity Committee during the second semester was the publicizing of the Fourth War Loan Campaign.

Left to right—

STUDENT COUNCIL EXECUTIVE COMMITTEE

Bill Brandt, Jean Taylor, Dick Regan.

POINT COMMITTEE

Connie Evans, Ken Bohanon.

CONSTITUTION COMMITTEE

Sally Hammond, Esther Hisey, Pat Smith.

SHOW COMMITTEE

Iva Knight, Alice Scharlotte, Janice Lloyd.

DANCE COMMITTEE

Virginia Ault, Eloine Qualman, Bert Boyle.

WHO'S BEHIND THE SHOWS?

The Student Council's Show Committee, aided by lists of motion pictures requested by students, selects movies to be shown during the lunch periods. The members of this committee meet with representatives of various agencies selling motion pictures to schools.

Variety must be the keynote of the programs, and experience has shown the committee that war pictures, especially those concerning airplanes, have the greatest appeal. Close behind are musicals and other comedies, but westerns are far down on the request list.

TERPSICHOREAN PLANNERS

Did you know all school clubs are required to order the recordings for their dances through the Student Council? That's the reason the Dance Committee started off its year by making a contract for eight recording dates. Our own "Bodie and Bob," well-known recording machine operators, handled the musical portion of the agreement.

The committee was successful in brightening the fall semester with a barn dance in the boys' gym. Almost everyone, boys and girls alike, donned plaid shirts and blue jeans to harmonize with the vogue of the night. Cornstalks bedecked the gym, adding to the spirit of fun. Cider and doughnuts contributed to the atmosphere; while square dancing drew the main attention of the evening.



Left to right—

DANCE AND SOCIAL COMMITTEE

Virginia Ault, Mary Kay Bonsteel, Bill Brandt, Elaine Qualman, Lois Gerstenberger.

MONITOR COMMITTEE

Sally Hammond, Larry Schroeder, Ray Todd.

EXECUTIVE COMMITTEE

Ray Todd, Bill Barclay, Larry Schroeder, Wayne Moorhead.

SHOW AND POINT COMMITTEE

Don Minadeo, Mary Bigalke, Bill Barclay, Larry Schroeder.

WHAT IS LOST SHALL BE FOUND

Students desiring to return something found or to inquire about lost articles will find the Lost and Found in room 209, open from eight o'clock to eight-twenty in the mornings and from three o'clock to three-twenty after school.

The Lost and Found is run entirely by the Student Council, supervised by Miss Anna M. Soutar.

At the close of each school year an auction is held, selling all lost articles not claimed through the year.

On May 25, 1943, \$18.42 was taken at the auction plus six dollars lost by students and not claimed. Money taken in at the auctions and money not claimed is given to the Junior Red Cross.



OBSERVER EDITORS

Lois Warnke, Betty Ketteler, Elaine Benedict, Annette Fuldauer, Jean Goncher, Marion Cole.

OBSERVER OBSERVERS

"The deadline is tonight"—"I've got to hurry and type this story" - -

Remarks like these have been heard around the halls ever since the Observer was started fourteen years ago. Persons who make them are members of the editorial staff.

This group of citizens of Shaw really know what the word "work" means. They come to the staff room after school, where until 6 o'clock some evenings they can be seen working. They read stories, write and rewrite them, and select the best of all articles that come in. Each editor has a specific job, such as collecting stories for one page of the paper or copyreading stories for another.

What reward do these editors get? Only the satisfaction of knowing that their paper is read appreciatively.

CORRECTIONS, PLEASE

The job of the Observer copyreaders is to read and reread every word that goes into the Observer, making sure of no mistakes. Under a merit system, a certain number of points is granted: three for every inch of copyreading and ten for a headline. When enough points are received, the copyreaders are often promoted to something higher on the school paper.

Mistakes are shown by symbols taken off a style sheet. When anything is wrong, the copyreader writes down a symbol to show how it should be corrected.

On Monday nights Reba Albert, Sherman Berne, Helen Conway, and Jean Ward are copyreading in the Observer office. Friday nights Virginia Ault, Dorothy Brooks, Howard Potiker, Bob Saba, and Lois Siller are doing their duty. Sometimes these persons work until 6:30 to complete the pages.

OBSERVER COPY READERS

Sitting, left to right—Dorothy Brooks, Doris Lipstreu, Lois Siller, Margaret Oetjen, Jean Ward, Reba Albert.
Standing, left to right—George Keith, Howard Potiker.



OBSERVER REPORTERS

Standing — Alma Davenport, Norma Bennett, Billie Mae Worden.

Seated — Mary Kay Bansteel, Lucille Olsen, Adele Goldberg, Joyce Jarman, Bob Saba, Bill Jackson, Mariel Weaver.



OBSERVER EDITORS

First Semester

Managing EditorJean Goncher
 Editor-in-chiefLois Warnke
 Feature EditorBetty Ketteler
 Copy EditorAnnette Fuldauer
 Sports EditorElaine Benedict
 Advertising ManagerJean Bollinger
 AdviserHubert McNeill

Second Semester

Managing EditorAnnette Fuldauer
 Editor-in-chiefLois Warnke
 Feature EditorMarion Cole
 Sports EditorElaine Benedict
 Advertising ManagerJean Bollinger
 AdviserHubert McNeill

NOSE FOR NEWS

It's fine work Observer reporters are doing, discovering news affecting the school. It takes a person with interest in the school to go around and collect all the concerns of the students and put them down for the enjoyment of others in the Observer.

Deadline for sport stories is three days before the paper comes out, and most news articles have a deadline of six days.

Observer reporters helped win the Quill and Scroll's "A" for achievement, an international award for superior papers in war time.



OBSERVER BUSINESS STAFF

Left to right—Anne Murphy, Lois Horan, Adelaine Otto, Jean Ballinger, Milton Hayman, Walter Funk.



**DRAMATICS CLUB, ADVANCED EXPRESSION CLASS,
AND EXECUTIVE COUNCIL**

Back Row—Fred Meredith, Harry Kellem, William Jackson, Sherman Berne.

Middle Row—Donald Ennis, Margary Wolkov, Joyce Jarman, Doris Lipstreu, Jeanne Lewis, Mary Richter, Bob Saba.

Front Row—Evelyn Pattinson, Wayland Smith, John Inman, Donald Fortlage, Alan Gross, Pat Austin.

DRAMATICS CLUB

BEFORE THE FOOTLIGHTS

With an eye to training a thespian team whose performances would parallel those of a championship squad, Miss Lois Dean again directed the Shaw High Dramatics club.

The most promising of the volunteers at try-outs September 21 and 23 were chosen; and immediately work began on "Gay Nineties," a colorful after-school production.

An atmosphere of Christmas with its toyshops and merriment swept the air when the successful portrayal of "A Christmas Dream" as a pantomime set to music, was given before the holidays. Also participating were members of the girls' gym classes.

As part of the Class Day Exercises January 19, the organization gave "The Castle of Mr. Simpson."

Climax of its program was the Mid-year play presented in the spring. It also gave a play on Class night in May.

HISTORY CLUB

THE HISTORY CLUB

The History Club is headed by Mrs. Florence Thomas. This club meets every other Tuesday after school, in room 8. At these meetings members of this club discuss famous men and women, current affairs, and war news. At times members give brief biographical sketches of some of the presidents, and other famous people in history.

The president of this club is Bob Saba of homeroom 20. The other officers are: Maria Zorn, vice-president; Corrine Wissman, secretary; Thomas Quinlan, treasurer.



HISTORY CLUB

Back Row—Bob Reilly, Bob Saba, Tom Quinlan.

Second Row—Elva Keckler, Erla Mae Price, Marion Cole, Corrine Wissman, Marie Zorn.

First Row—Lillian Cook, Carol Currier, Bill Jackson, Pat Baldwin.



SOCIOLOGY CLUB

Back Row—Tom Quinlan, Ken Wismer, Bob Inks, Bill Jackson, Ed Connell, Bob Saba, David Booth.

Second Row—Joyce Jarman, Gladys Ford, Marian Bliss, Ray Todd, Ray Smalley, Mary Bigalke, Betty Ketteler, Jean Flannery.

First Row—Lois Fields, Marion Cole, Effie Johnston, Carl Larsen, Bill Martin, Jean Clements, Doreen Rosenthal, Carol Currier.

SOCIOLOGY

SOCIOLOGISTS TRY TO CARRY ON

This organization will feel the loss of the late Earl G. Abbott more than any other club. For many years Mr. Abbott had been guiding this club to successful years and producing many fine members. This club is in connection with the sociology classes which he taught.

Meetings were held on Monday nights. Different speakers came to give lectures on current social problems. Mr. Nishi, a highly educated relocated Japanese, was their most interesting speaker. His topic was current, having to deal with the Americans of Japanese ancestry who were living on the West coast when the Japs attacked Pearl Harbor.

With Carl Larsen as president, Bill Martin as vice-president, Jean Clements as secretary, Effie Johnston as treasurer and 25 other members, the boys and girls made many trips to various social institutions.

Information for this write-up was secured in the last interview with Mr. Abbott before his passing.

ART CLUB

ARTISTIC SERVICES

Art is essential to Shaw. In this third year of the war, the making of a "Guest Book" for service men to sign is just one example of its importance.

A profit of \$15 was realized from the selling of ceramic costume pins which the students made. Under the direction of Miss Marian Bright, the money was used to buy material and supplies that could not be obtained through the regular budget.

By bringing in tentative sketches, club members are preparing to repaint the mural in their room. The subject of the painting will be "Art of Today and Tomorrow."

Drawings were also made for the regional exhibition in the downtown stores. A few students take part in the making of sketches for the Observer, and all participate in making posters for nearly every organization in Shaw. As usual, the May show climaxed the year with exhibitions from every student.

The purpose of this organization is to serve the school in any way possible through art work.



ART CLUB

Back Row—Richard Steiger, Tom Quinlan, Charles Klagge.

Second Row—Elaine Qualman, Ruth Swisher, Roberta Huettich, Beth Sutton, Leila Davies, Dorothy Siddaway.

First Row—Lois Schmunk, Betty McFadyen, Virginia Gilke, Joann Taylor, Dorothy Lenz, Joan Harrison.



BOYS' GLEE CLUB

Back Row—Ray Todd, Roger Brussee, John Tryon, Tom Brumley, Bill Cope.

Second Row—Don White, Stanley Hiltabiddle, Bill Barclay, Bill Zimmerman, Milton Hayman, Carl Levy.

First Row—Allen McGraw, Harry Kellem, Ted Albert, Bob Burton, Frank Gold.

BOYS' GLEE

BOYS' GLEE CLUB

The Boys' Glee Club under the direction of Edgar E. Vance is an organization for those boys who like to sing for the sake of pleasure. Outside school they entertained the East Cleveland Lions Club.

This organization met in B-11 each Friday after school. Among the tunes most enjoyed by the boys were Sigmund Romberg's "Stout Hearted Men," "Sleepy Hollow Tune" by Richard Korinty, and "De Animals A' Comin'" arranged by Marshall Bartholemew.





GIRLS' GLEE CLUB

Back Row—Mary Jane Humphries, Barbara New, Virginia Ault, Doris Magee, Joan Wischmeyer, Gladys Schnell, Betty Morgan, Barbara Eicker, Eleanor Forni.

Second Row—Elaine Daniels, Shirley Osborne, Jeanette Nutting, Pat Kepic, Shirley Russell, Sonja Blum, Carolyn Krische, Ann Krische, Nancy York.

First Row—Barbara Goodwin, Gertrude Hoffman, Mary Jane Trivison, Joan Specht, Jean Vokoun, Ann Inman, Sue Carran, June Cameron, Carolyn Satter.

GIRLS' GLEE



GIRLS' GLEE CLUB

This group of girls organizes each year for the purpose of not only singing together but of meeting and making friends. They meet every Monday afternoon in room B-11. The girls are under the direction of Edgar E. Vance. The librarians for the music this year were Carol Jones and Joy Hansel.

The president is Bernice Rekittke; secretary is Jeanette Nutting; vice-president is Marilyn Juillet; treasurer is Jean Anderson. Piano accompaniment is by Ruth Witham.

The girls celebrated Halloween with a pot luck supper. They plan to sing at the spring festival May 19.



SENIOR FRIENDSHIP CABINET

Back Row—Jane Nelson, Janet Askue, Catherine Davidson, Roberta Huettich, Jean Vokoun, Isabelle Thompson, Elaine Qualman.

First Row—Jeanne Lewis, Elaine Benedict, Mary Bigalke, Betty Ketteler, Virginia Smith.

SENIOR FRIENDSHIP

SENIOR FRIENDSHIP CABINET

The cabinet is the administrative part of Senior Friendship Club made up of the four officers and the chairmen of the publicity, social, service, music, art, and ring group committees.

This year the Sophomore and Senior Friendship Clubs combined. One sophomore was elected a delegate to the already selected senior cabinet. One inter-club council member was elected to keep in contact with the projects that other Friendship clubs in the city undertake. The inter-club council representative belongs to the cabinet.

The cabinet proposes ideas to be brought up in general meetings. Members attend to planning programs, obtaining speakers, and organizing recreation.



SENIOR FRIENDSHIP CABINET

Back Row—Jane Nelson, Isabelle Thompson, Elaine Qualman.

Second Row—Stormy Robinson, Janet Askue, Marilyn Church.

First Row—Mary Kay Bonsteel, Jeanne Lewis, June Cameron.



SOPHOMORE FRIENDSHIP CABINET

Frances Rigel, Charlotte Schacht, Barbara Ann Henry.
Pat Rapp, Dorothy Pickett, Marilyn Robinson, Marilyn Varcoe.
Alice Scharlotte, Diana Rollands, Mary Lou Lennon, Mae Volpe.

SOPHOMORE FRIENDSHIP

UNITED IN FRIENDSHIP

The Sophomore Friendship Club has been one of the most popular student organizations among tenth grade girls. Any sophomore girl was eligible to become a member.

Every semester a recognition service is held, when new girls become official members of the club.

Besides regular meetings many interesting programs were scheduled last year, such as a Halloween party and a combined County Fair and Dance with Senior Friendship Club. Many guests entertained the girls with educational speeches.

Main purpose of this organization has been to promote friendship among sophomore girls.

Last January this organization united with the Senior Friendship Club to form the Friendship Club of Shaw High School.



HONOR SOCIETY

Back Row—Dick Regan, Steve Regan, Alan Levine, Wayland Smith, Donald Kern, Thomas Quinlan, Richard Miller, Don Noblett.
Middle Row—Mary Kay Bonsteel, Lois Warnke, Kathleen Roege, Francile Weitz, Joy Lawrence, Beverly Avis.
Front Row—Carol Currier, Sally Hammond, Jean Vokoun, Wayne Moorhead, Jean Goncher, Eudyce Garber.

**HONOR SOCIETY
 PROMOTES WAR LOAN DRIVES**

Membership in the National Honor Society is one of the highest honors any Shaw student can receive. Students who belong to it are chosen from the upper scholastic fourth of the junior A and senior classes. Only those rated by their teachers as having fine traits of character, leadership, and participation in worthwhile extra-curricular activities are considered.

The club's main activity this year was the sale of war bonds and stamps. The students in charge of this were Joy Lawrence, Lois Norton, Kathleen Roege and Francile Weitz, who did a large part in making Shaw's Fourth War Loan Drive successful.

An increase over last year's membership was shown when thirty-one students were elected for the first semester. On January 12, fourteen new members replaced the twenty graduates. Annually, about fifteen per cent of the senior A's receive membership and the senior B's and junior A's are allowed fifteen and twenty per cent of their classes respectively.

Harold L. Naragon, adviser, and a faculty committee comprised of Clem Nixon, N. B. Nunemaker, Miss Elizabeth Wenger, and Miss Helen Wright, select new members from reports turned in by the candidates' teachers.

HONOR SOCIETY



HONOR SOCIETY

Back Row—Don Midadeo, Bob Saba, Norman Thompson, Bill Dean, Michael Stashower, Louis Lehmann.
Middle Row—Roberta Heuttich, Catherine Davidson, Donna Ruoff, Dorothy Dows, Elaine Benedict, Mary Bigalke.
Front Row—Janice Lloyd, Carolyn Krische, Dorothy Hoover, Annette Fuldauer, Helen La Violette, Marilyn Miles.



ROLLER WHEELS, CARRY ME HOME

Both experienced skaters and "children," those who don't know how to skate, belong to Whirlo. Long meetings, hot arguments, and hard-fought presidential campaigns are what this club is noted for.

Every Whirlo-ite works to obtain 250 points for an emblem, and eventually 150 more for a pin. Learning dance steps on Wednesday entitles a member to three points; while the regular Friday afternoon sessions offer two points.

A skating party was held November 19. At its Christmas party, December 17, the group presented Miss Rachael Wolf, sponsor, with an overnight bag fitted out with cosmetics. The annual banquet was held in the latter part of February.

Presiding over meetings, every other Tuesday throughout the year, has been Tom Quinlan. Other officers during the first semester were: Joyce Jarman, vice-president; Bill Zimmerman, secretary; and Janet Hoyer, treasurer. In the second semester Bill Zimmerman became vice-president; with Vivian Wilkie, secretary, and Mary Richter, treasurer.

Wheels that come off and gum on the skating floor are the pet hates of all members.

WHIRLO

CLUB



MOVIE CREW....

MOVIE CREW IS TOPS

The show must go on and it surely has this year at Shaw. The movie crew is probably the most independent student-run activity in the school. Being one of the few student managed crews in the area, it is rated as "tops" by those who know.

Gene Bookner, head of the group, was chosen after he had conscientiously served a year as an operator. He was in charge of the sixth period movie and also had to see that the films arrived and left on time.

Fourth period Acree Shreve was in charge; while Bill Dean was head of the fifth period crew. Gaining valuable experience and serving their school at the same time were Robert Cardoza, Daniel Dewelle, John Isely, Laurence Kline, Louis Lehmann, Allan Martin, George Roller, and Sheldon Veil.

Miss Anna Soutar, movie crew adviser, thinks very highly of these boys and hopes that the future operators will be as good.

BEHIND THE SCENES

With only five boys, Miss Lois Dean has put together a fine stage crew. She has assigned each boy a special job, but all have proved themselves capable of doing any job on the stage.

Manager of the stage crew is Harold White, a senior A student, who is responsible for every action of the boys. With this responsibility he must keep an eye on all his charges to see that there is no mistake. Lloyd Immke does the carpentry work, and the electrician is Dave Gebhart. The boy that operates the balcony spotlight is James Benedict. James Carroll, who is known as the general stagehand, is a sophomore A who asks a lot of questions and is learning something new every day.

STAGE CREW....





THE SHAW BAND

Flutes and Piccolos—Mary Bonsteel, Margaret Brightman, Peg Holmes, Edith Barlow; **Clarinets**—Dorothy Caddick, Joe Ricciardi, Norman Townsend, Dorothy Dows, Robert Pattie, Marjorie Allan, Mike Bibee, Michael Stashower, Perry Gittleson, Richard Baumgartner, Richard Jones, Lee McMillen, Gerald Berger, Doris Luth, Marilyn Welker, Phyllis Iseman, Mignonette Schumann, Morton Weider, Francis Drake, Elizabeth York, Mary Jean Sturrock, Dale Boyce, Virginia Francis, Patsy DeGormo, Nancy Ayers, Robert Davies, Bob Erickson, Dick Smith, Catherine Jones, Betty Schaefer, Marie Mechtenseimer, Naomi Hitchings; **Bassoon**—Garnet Albrecht; **Alto Sax**—Al Kieselbach, Donna Ruoff, Dick Zook, Earl Mechtenseimer, Mary Lou Woodley, Ruth Kieselbach; **Tenor Sax**—Bruce Jewett, John Ciccone; **Bari-tone Sax**—Romeo Pallante, Ernest Bradley; **Bass Sax**—Leonard Portmann; **Cornets and Trumpets**—Donald Kern, David Armstrong, William Stute, Virginia Overfield, Jack Ress, William Allen, Ernest Schultz, Paul Izant, John Dilley, Bob Miller, Donald White, Richard Aul; **Horns**—Mary Woehрман, Roger Hirschauer, Robert Barton, Lawrence Schaefer, Eleanor Diehl, Corrine Mosher; **Trombones**—Wayne Groenstein, William Lang, Glen Mitchell, Ronald Stallings, Kenyon Hottell, Garth Griffith, Anne Fitch; **Boritanes**—Ralph Joseph, Tom Dilley, Allan Saum; **Basses**—George Terwilliger, William Cumler, Carl Green, Charles McCoy, Werner Sonntag, Leon Reid, Harvey Burwell; **Drums**—Dean Cameron, Sam McKee, Willis Hannewalt, Charles Christy, Gilbert Howard, George Simmons; **Tympani**—Burke Peterson.

BAND WAGON

Despite war conditions the band had a successful year. The eighty-eight piece marching band, besides playing for our own football games, played for the Ohio State-Purdue game at the downtown stadium, and at other college games.

One of the highlights of the fall season was its appearance with Rudy Vallee at our stadium. Band members also played at Nela Park and several civilian defense programs.

February 21 they gave their Winter Concert featuring four solos on various instruments. The band completed its highly successful year at the annual Spring Concert in May.



SHUTTLE STAFF

Left to right—
Tom Patton, Bert Boyle.
Mary Kay Bonsteel, Pat Smith.

YEARBOOK STAFF

THEY SOLD THIS BOOK

An essential group connected with the yearbook is the Shuttle business staff. The members are Virginia Ault, Annette Fuldauer, Milton Hayman, and Bob Saba, manager.

The duties of the staff from the time school starts in the fall until the Shuttle is published in the spring revolve around subscription-selling and distribution.

Posters to advertise the Shuttle were made by Thomas Quinlan; and the public address system was also used to good advantage. Total number of Shuttles sold, excluding the sophomore B's, was 687 and the amount received for these totaled \$1374.

The staff gave to the homeroom solicitors the opportunity of earning free annuals if they sold Shuttles to three-fourths of their homeroom. Eleven annuals were given as prizes in this contest.

SHUTTLE EDITORIAL STAFF

Throughout the year the Shuttle staff gathers information and material to form a permanent record of the activities of the current school year.

Silently and busily the staff aim is to weave together an accurate and complete picture in photographs and words of this year's school life.

Preparation began in the month of May, 1943, when plans for the theme were formed.

The work involved in publishing the Shuttle includes the taking of pictures and reporting of club activities. Checking everything that goes into the book from the original writeups, submitted by the reporters, and the identification of all persons appearing in pictures, to the page proof, was important to complete the publication of the yearbook.

Members of the editorial staff include Sherman Berne, Herbert Boyle, Lois Horan, Shirley Johnston, Tom Patton, and Wayland Smith.



SHUTTLE BUSINESS STAFF

Annette Fuldauer, Bob Saba, Milton Hayman.

Hi-Y

HI-Y'D AND HANDSOME

From the falling of the leaves in September to the coming of summer in June, Hi-Y had an active year, starting out with Jack Berman, Phil Russo, Steve Regan, and Bill Barclay as officers. Every Tuesday and Thursday after school in the fall the boys would go to Forest Hills Park to play football. Halcyon took first place in this and Delphi was second.

An outdoor party was held on the basketball court with dancing and games. Many of the small clubs had hayrides and parties at the Y house. Hi-Y was active in selling war bonds and helping with the scrap drive.

When winter started, so did the basketball league. A city-wide Hi-Y dance was held with many boys from Shaw attending. One boy from each small club journeyed to Columbus for a state-wide Hi-Y meeting.

The annual Hi-Y swimming meet was held April 13. Krypton was dissolved leaving only eight small clubs. The annual Hi-Y show with its fun and deviltry was given in the Kirk Auditorium. Pat Smith, Don Fortlage, Ralph Vara and Bill Brandt were the second semester officers. Many picnics and parties plus the baseball league filled out the spring.



HI-Y OFFICERS

Left to right—Bill Bond, Chaplain; Don Fortlage, Vice President; Pat Smith, President; Ralph Vara, Secretary; Bill Brandt, Treasurer.



HALCYON

Top Row, left to right—Charles Wissman, Bob VanVliet, Norm Hammerle, Eric Hall, Bruce Bletso, Frank Gold.

Second Row—Vince Voranese, Charles Weitz, Norm Townsend, Edson Connell, Bruce Greek.

Bottom Row—Louis Lehmann, Frank Hach, Don Noblett, Norm Brenne, Bill Barker.



DELPHI

Top Row, left to right—Bob Lanese, Jim Reimholz, Bill Barclay, Shel Veil, John Heitz, Dean Cameron.

Second Row—Kirk Reid, Burney Magnasen, Burke Peterson, Noel Wines, Carl Di Giovine.

Bottom Row—Bill Ballinger, George Keith, Dave Ritchie, Larry Brown, Ralph McAllister.



MAZDA

Top Row, left to right—Jim Jarvie, Lynn Rennick, John McGilvery, Mr. Harry Austin, Chuck Amos, Ralph Ehrenberg.

Second Row—Bob Hahn, Bill Brandt, John Harmon, Bob Lampert, Bill Cope.



COPAINE

Top Row, left to right—Bob Burris, Gale Bender, Mr. Kirk Russell, Burney Blumenthal, John Limes.

Second Row—Ralph Orche, Don Gregor, Dick Denham, Ed Breedon, Pat Smith.



AMIGUS

Top Row, left to right—Ed Thomas, Chuck Rendlesham, Bill Elder, Doug Warman, Milton Hayman.

Second Row—Ralph Roberts, Jack Wason, Gordon Weisse, Charles Gercheski.

Bottom Row—Bill Mulhauser, Norm Thompson, Bruce Jewitt, Bob Saba.



ECAOWASIN

Tow Row, left to right—Dick Regan, Jim Caughlin, Tom Byers, Bob Barton, Jack Hoffman, Mr. George Chapman.

Second Row—Steve Regan, Chuck Christy, Dick Maier, Nick Fratianne, Jim Decker.

Bottom Row—Ed Molzan, Dave Larsen, Dick Wiltshire, Harry Kellem.



TALA

Top Row, left to right—Bill Mead, Dick Carlson, Don Linton, Clarence Rodholm.

Second Row—Dick Allen, Dick Sneller, John Bows, Jack Hill, Russell McCoy.

Bottom Row—Bill Bond, Bob Suydam, Herb Pekarek, Ralph Vara, Mike Bibee.



ARGUS

Top Row, left to right—Chuck Meyers, Bob Studell, Bob Erdley, Paul Izant, Carl Reese.

Second Row—Bob Christy, Don Fortlage, Max Gillam, Ernie Hutton.

Bottom Row—Jim Wylie, Will Allen, Randell Erdley, Jim Ennis.



**SENIOR A
SPANISH STUDENTS**

Jean Vokoun, Jean Goncher,
Mary Bigalke, Allan Levine
Janice Bernstein, Gloria Elliott,
Alan Gross, Betty Ketteler, Vir-
ginia Smith

SPANISH CLUB

SEVENTH PERIOD SPANIARDS

This year Shaw had only one Spanish club which met in Miss Alice Zuck's seventh period class.

When the club took over the sale of war bonds and stamps for two weeks in the semester, each member was active in reaching the goal which had been set. At each meeting entertainment was provided. This ranged from games and singing, to solving Spanish crossword puzzles and listening to talks.



**DEBATE
FOREIGN AFFAIRS CLUB**

Wayne Moorhead, Tom Quinlan, Louis Jacobs, Sherman Berne, Michael Stashower, Dean Cameron, Frank Gold, Mozelle Terry, Gloria Goermdt, Bill Robbins, Perry Gittelsohn, Martin Stevens, Milton Hayman, Evelyn Pattinson, Marilyn Frericks
 Joy Hansel, Betty Riggs, Margie Wolkov, Emrie Thorsen, Pat Baldwin, Dorothy Brooks, Leila Davies, Carol Currier

THEY WANT TO ARGUE

One of the oldest and most popular groups at Shaw is the Debate Club. This club, founded in 1910, is sponsored by Miss Lois Crank.

Besides holding its own regular meetings and round-table discussions, it enters into intramural and interscholastic debates. With all this, members still find time to give speeches for the P.-T.A. and attend the Junior and Senior Councils on Foreign Affairs.

Such topics as "U. S. Should Join in Reconstituting the League of Nations," "Better Relations with Latin America," and "Freedom of the Air" were under discussion this past year.

In room 39 every other Wednesday, one may hear heated discussions on subjects of world-wide importance.



First Row—Jane Beal, Ann Roberts, Mary Jane Baldner, Isabelle Thompson, Katherine Gardy, Pat Kepic, Mary Jane Humphries, Diane Cassell, Barbara Jackson, Joan Specht.
Second Row—Marion Schmidt, Kay Deinhart, Marilyn Hartman, Jane Forsberg, Betty Lou Morgan, Mary Jane Trivison, Mary Cunningham, Doris McKechnie, Grace Miles, Lois LaGanke.
Third Row—Betty Richardson, Glorio DuPraw, Audrey Mattson, Marilyn Frericks, Joan Wischmeyer, Nadine Hartford, Leona Brown, Bernice Rekittke, Gloria Goerndt, Annagene Kingsley.
Fourth Row—Dean Barndt, Shirley Russell, George Keith, Noel Wines, Fred Schnell, Stanley Hittabiddle, Bill Zimmerman, Tom Quinlan.
Fifth Row—Joe Bullington, Dick Denham, George Singer, Jack Tuttle, Jack Tryon, Gayle Bender, Sam Piazza, Bill Cope, Frank Gold.

CHOIR

CO-OPERATIVE SINGERS

The Christmas season found the choir singing carols not only for Shaw's Yuletide program, but also at a downtown department store and the East Cleveland Library. After having given up part of their vacation to sing carols at noon and in the evening on Dec. 23 at Thompson aircraft, members were rewarded with turkey dinners.

Because the Lake Erie League festival was discontinued, choirs from Cleveland Heights, Lakewood, Shaker Heights, and Shaw arranged a program March 17, at which each choir sang a fifteen-minute program, and then all combined forces.

Other programs the choir has participated in this year are the Armistice Day assembly, the American Legion Auxiliary, Founders' Day at Chambers, the Sunrise Service in Forest Hills Park on Easter morning, the Spring concert, and at the Church of the Cross. A special ensemble also sang for the Mayfair P.-T. A.

Officers this last semester were Stanley Hiltabiddle, president; Dorothy Cope, vice-president; Bill Barclay, treasurer; Betty Richardson, secretary; and Bill Cope and Roland Patzer, librarians.



Sandra Nussel, Barbara Eicher,
Erla Mae Price, Marilyn Fre-
ricks, Janice Llayd, Barbara
Bottenus
Joan Specht, Shirley Russell,
Joyce Johnston, Ruth Bartlett,
Harriet Carran

CAPTAINS OF FRIENDSHIP

Serving as a stimulus to the school was the job that the Senior Friendship homeroom captains had before them. They have worked like beavers all year, and their reward is the satisfaction of a job well done.

These girls played an important part in the success of the County Fair in November. Their job was to obtain people to work in the various booths. The pot-luck supper January 12 was another of the club's activities. Homeroom captains urged students to bring Valentines for crippled children on that day. In March, the Senior Friendship Club entertained the Methodist Children's Home of Berea in the boys' gym. Gifts and refreshments brought cheer to many.

The success of the year's projects depended on these student leaders. They stand out as excellent examples of teamwork and cooperation.

ATHLETIC COUNCIL GIRLS

Other Athletic Council pictures elsewhere



Top: Jane Nelson, president; Esther Hisey.

Bottom: Janice Lloyd, Barbara Bottenus.

Engravings

in this book were manufactured

by


**NORTHERN
ENGRAVING**

AND

**ELECTROTYPE
COMPANY**

of

Canton, Ohio




1944
SHUTTLE COVERS

were made by

**A. H. PELZ
COMPANY**

1825 East 18th Street

Cleveland, Ohio



We, too
ARE PROUD
OF THE
1944
SHUTTLE



The staff has achieved a beautiful and interesting record of Shaw life, and we are grateful for the opportunity of reproducing it for the pleasure of all Shawites.



THE JUDSON COMPANY

Printers

1009 ROCKWELL AVENUE • CLEVELAND, OHIO

WE EXTEND OUR
SINCERE THANKS
and
WISH YOU SUCCESS



CHESSHIRE
Higbee Photographers



Official Photographers of
SHAW SHUTTLE

