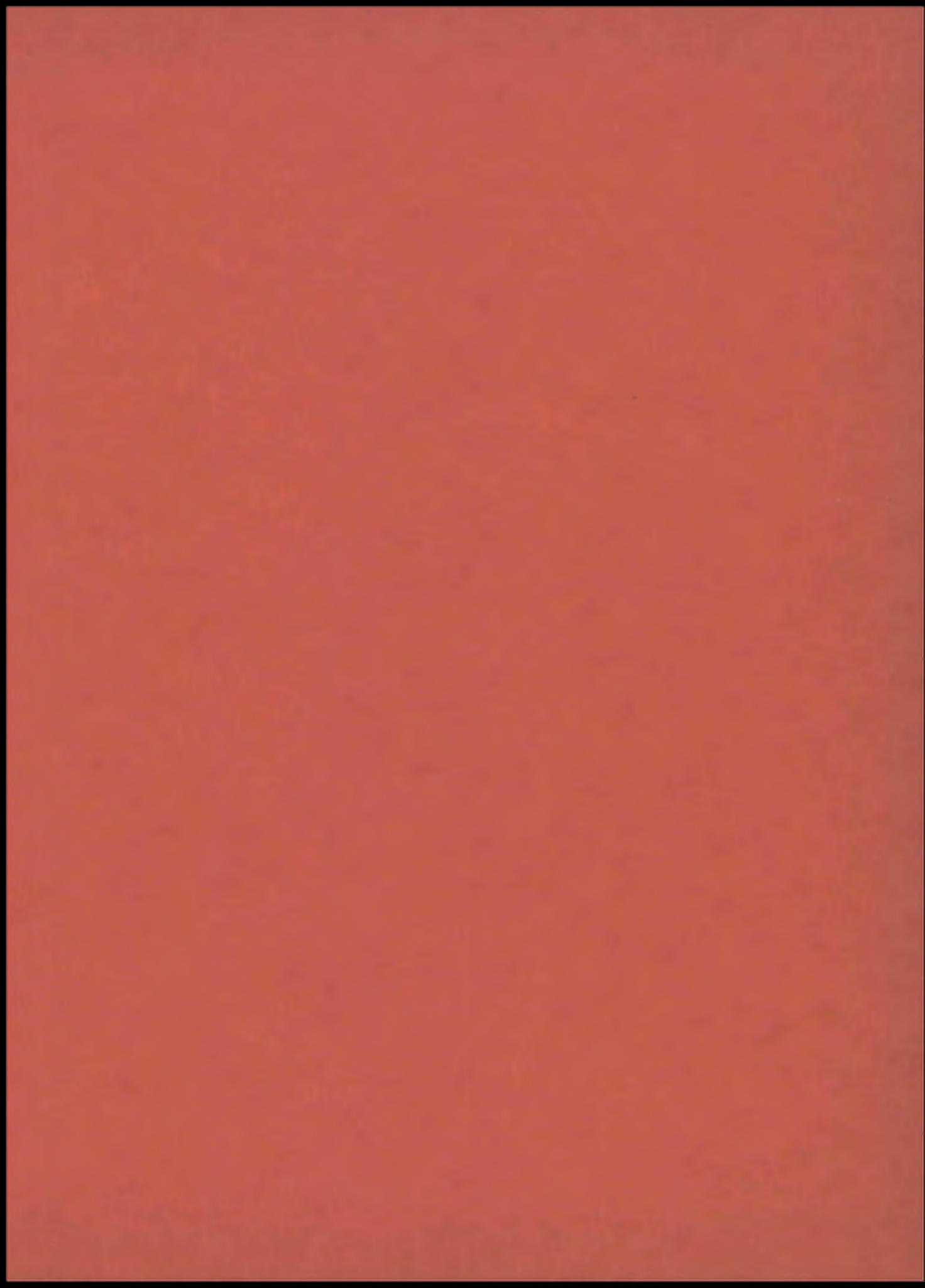


1985

The Shuttle





▲▲▲ The 1940 Shuttle ▲▲▲

The Shuttle
for
1940



William Lowry, Editor

Charles Ault, Ass't Editor

Bette Haberer, Business Mgr.



Published by the Senior Class

SHAW HIGH SCHOOL
EAST CLEVELAND, OHIO

Volume 37



SHAW HIGH SCHOOL 1630 students, 70 teachers one hundred two years of traditions and memories beacon light of progressive education in East Cleveland best-illuminated educational buildings in America most modern high school stadium in the United States high academic standing—history, English, languages, fine arts, useful arts, rhetoric, science, business, mathematics, dramatics, physical training corridors of trophies, cups and awards.

Home of powerful football elevens, championship basketball quin-



tets, crack tankmen . . . strong track, cross country, hockey, tennis and baseball teams . . . numerous girls' athletics.

First-division bands, state-renowned debate teams, nationally recognized publications . . . student participation in school government.

Rich in social contacts . . . happy reminiscences of dates and dances, parties and plays . . . spirited athletic contests . . . profitable Hi-Y and Friendship Club meetings . . . extracurricular activities and after-school diversions . . . fast friends made, and true.



DR. O. J. KORB

Welcome

THESE opening pages would indeed be incomplete without a sincere and warm welcome to you, Dr. Korb. In the short time you have occupied your new post as head of the East Cleveland school system, you have made an impression deep in the minds and hearts of all of us.

With an enviable record in educational work already established, you come fully prepared to further the progressive organization which your predecessor developed here.

The *Shuttle* speaks for the students of Shaw High School in welcoming you to East Cleveland. We hope you like our school and trust that you will find in us a medium for accomplishing your highest professional ideals. May your years here be completely filled with joy and satisfaction.

And so from the very hearts of all of us comes, "Welcome, Dr. Korb!"

Board of Education

MR. C. W. KIMMEL, elected president of the board in January, 1940, has served since January 1, 1932. His term expires December 31, 1943.



MR. GEORGE N. NELSON, elected vice president in January, 1940, has served since 1934. His term expires December 31, 1941.

MRS. MARIEM S. MORGAN was appointed to the board January 1, 1934. Her present term expires December 31, 1941.



MR. BEN B. WICKHAM, retired president, assumed his duties in November, 1929. His term will expire December 31, 1943.

MR. PAUL H. McCLELLAND, newly elected member of the board, will serve until December 31, 1943.





MR. M. C. DIETRICH

Principal

FEW people who have been connected with Shaw High School and its 1600 or more students can equal the sincerity and achievement of her principal.

Mr. M. C. Dietrich, who came to Shaw from Billings, Montana, now brings to a close his eleventh year as the head of Shaw. During the past decade he has done much to broaden the curriculum and stimulate interest in outside activities.

At the same time he has maintained a keen interest in the individual whose problems he has handled justly and with wisdom. The wheels of Shaw have indeed gone forward under his expert guidance.

shaw faculty

MISS JEAN QUAY,
Assistant Principal
MR. HOWARD K. HUNTER,
Guidance Director
MR. F. E. WILLIAMS,
Boys' Adviser



EARL G. ABBOTT, M.A. Economics; History
Faculty Manager: Boys Athletics
Ohio Wesleyan University, B.A., M.A.

LOUISE BAKER, M.A. English
Ohio Wesleyan University, B.A., B.L.; Western Reserve University, M.A.; Chicago University, Graduate Work; Diploma at King's School of Oratory, Pittsburgh.

MARTHA FRANCES BARNETT Expression
Adviser: Dramatic Club
Judson College, Marion, Alabama; Curry School of Speech; Boston University; Western Reserve University; Northwestern University.

MARIAN M. BRIGHT Art
Adviser: Art Club
Columbus Art School; Ohio State University; Art Students' League of New York.

RALPH A. BROWN, M.A. Mathematics
Head of Mathematics Department
Adviser: Astronomy Club
Case School of Applied Science, B.S.; Western Reserve University, M.A.

HARRIET D. CARPENTER, B.S. Home Economics
Adviser: Sophomore Friendship Club
Western Reserve University, B.S.; University of Wisconsin; Columbia University, Graduate Work.

CLAUDE J. CARTER, B.A. Physics
Adviser: Radio Club
Ohio State University; Ohio Wesleyan University, B.A.

CLARA CLENDENEN, M.A. English
University of Pennsylvania, B.S. in Education; Western Reserve University, M.A.

ALICE ANNETTE COFFIN, M.A. Biology
Adviser: Senior Friendship Club
Oberlin College, B.A.; Western Reserve University, M.A.

OLIVER N. CRAIG Woodworking
Head of Book Store
Adviser: Photography Club
Bradley Polytechnic.

LOIS CRANK Debate; Public Speaking
Adviser: Debate Club; National Forensic League
Curry School of Expression; Mary Baldwin College; University of Virginia; Western Reserve University.

FOREIGN LANGUAGES



Back Row: Miss Ort, Miss Jones, Miss Woodward. Front Row: Miss Dillman, Miss Gleeson, Miss Kennan, Miss Duvendeck, Miss Zuck.

faculty

SOCIAL SCIENCES



Left to Right: Miss Nott, Mr. Loftus, Mr. Lowden, Mr. Abbott, Miss Devney, Mr. Rees.

HAROLD W. CROOK, B.S. Physiography
Allegheny College, B.S.; Ohio State University, B.S.
in Education.

LOIS DEAN, B.S. Expression; Public Speaking
Adviser: Dramatic Club
Curry School of Expression; American Academy of
Dramatic Art; Columbia University; Boston Univer-
sity, B.S.

ANNA M. DEVNEY, M.A. History
Adviser: Stamp Club
Valparaiso University, B.S.; Western Reserve Univer-
sity, M.A.

LUCY DICKSON, M.A. English
University of Chicago; Columbia University, B.S.,
M.A.

JULIA DILLMAN, B.A. Spanish; History
Cornell University, B.A.; Graduate Work, Cornell;
Wisconsin; University of California.

CORNELIA DILLON, B.S. Mathematics; Physiology
Ohio State University, B.S. in Education.

EVA DuHADWAY, B.S. Commercial
Ohio University, B.S. in Education.

KATHARINE E. DUVENDECK, M.A. German
Ohio Wesleyan University, B.A.; Western Reserve
University, M.A.

HARRY M. FOOTE Mechanical Drawing
Architectural and Mechanical Drawing, Western Re-
serve University; Racine College.

HOMER R. GIFFORD, B.S. Mathematics
Adviser: Observer Business Staff
Otterbein College, B.S.; Graduate Work, University of
Chicago; Columbia University; Western Reserve Uni-
versity.

JENNIE A. GLEESON, M.A. Latin
Adviser: Latin Club
Director: Senior Activities
Western Reserve University, Ph.B., M.A.

GRACE L. HARTMAN, M.A. Botany; Biology
College of Wooster, B.A.; Western Reserve University,
M.A.

KATHRYN HUBINGER, B.S. Commercial
Ohio State University, B.S. in Home Economics; Office
Training School.

HOWARD K. HUNTER, M.A. Director of Guidance
Western Reserve University, B.A., M.A.

JANET JONES, M.A. French
Adviser: National Honor Society; French Club
Denison College, B.S.; Middlebury College, M.A.;
Graduate Work in France, L'Alliance Francaise.

ALBA B. JUNK, M.A. Commercial
Adviser: Shuttle Editorial Staff
Miami University, B.S.; Columbia University, M.A.

MATHEMATICS



Left to Right: Mr. Snively, Mr. Naragon, Mr. Gifford, Mr. Brown, Mr. Nick, Miss Dillon, Mr. Williams.

NATURAL SCIENCES



Left to Right: Mr. Carter, Miss Scribner, Mr. Morris, Mr. Crook, Mr. Nunemaker, Miss Coffin.

ALICE E. JURINGUS, B.S. Physical Education
 Adviser: Tarpon Club, Girls' Life-Saving Corps,
 Modern Dancing, Leaders' Club, Aqua-Dux
 Kent State University, B.S.

RUTH R. KENNAN, M.A. Latin
 Western Reserve University, B.A., M.A.

ANNITTA KLIPPLE, M.A. Cafeteria Manager
 Miami University, B.S.; Columbia University, M.A.

MARIE KURTZ, B.A. Commercial
 Findlay College, B.A.

N. F. LEIST, B.S. Law
 Head of Commercial Department
 Adviser: Shuttle Business Staff
 Bliss College, B.S. in Education; Ohio State University;
 Ohio University; Graduate Work, University of Cincinnati.

MADGE LINDSAY, M.A. English
 Adviser: Lotophagi Club
 Ohio University, B.A.; Western Reserve University,
 M.A.; Columbia University.

MARTIN C. LOFTUS, B.A. Mathematics
 Assistant Coach: Heavyweight Football
 Baldwin-Wallace College, B.A.

ROBERT P. LOUIS, B.A. Commercial
 Adviser: Argus H-Y Club
 Oberlin College, B.A.; University of Cincinnati;
 Boston University.

W. HOYT LOWDEN, M.A. History
 Head of History Department
 Ohio State University, B.A., M.A.; Graduate Work,
 Columbia University.

JEAN LAIRD McINTOSH, M.A. English
 Adviser: Junior Class Rings
 Denison University, B.A.; Western Reserve University,
 M.A.; Graduate Work, University of Chicago.

HUBERT McNEILL, M.A. English
 Adviser: Observer Editorial Staff
 Ohio State University; Western Reserve University,
 B.A., M.A.; Cleveland Law School, LL.B.

NINA McWEBB, R.N. Nurse
 Farrand Training School; Harper Hospital, Detroit,
 Michigan, R.N.

RALPH C. MORRIS, M.A. Chemistry
 Defiance College, B.A., M.A.; Jahn Marshall School
 of Law, LL.B.; Graduate Work, University of Chicago.

WILLIAM H. MORRIS, M.A. History
 Ohio University, B.S. in Education; Ohio State University,
 M.A.

MARY MORRISON, M.A. Librarian
 Adviser: Philomatheian Club
 University of Chicago, B.A.; University of Washington,
 M.A.; University of Illinois, B.L.S.

HEALTH



Left to Right: Mr. Offinger, Miss Wood, Miss McWebb, Miss Juringus, Mr. Vivian.

FINE ARTS



Left to Right: Mr. Niergarth, Miss Shaffer, Miss Barnett, Miss Crank, Miss Bright, Mr. Morris.

HAROLD L. NARAGON, M.A. History
Heidelberg College, B.A.; Ohio State University, M.A.

WILLIAM V. NICK, M.A. Geometry; Physiology
Assistant Coach: Track
Geneva College, B.A.; University of Pittsburgh, M.A.;
University of Southern California; Western Reserve
University; Columbia University.

MILTON G. NIERGARTH, B.A. Band; Orchestra
Northwestern College, B.A.

C. C. NIXON, B.A. Chemistry; Senior Science
Wilmington College, B.A.; Graduate Work, Western
Reserve University; Kent State University.

HELEN NOTT, M.A. History
Adviser: History Club
Denison University, Ph.B.; University of Nebraska,
M.A.

N. B. NUNEMAKER, B.A. Chemistry
Otterbein College, B.A.; Ohio State Graduate School;
Western Reserve Graduate School.

E. C. OFFINGER Physical Education
Coach: Tennis, Cross-Country, Track
Springfield (Mass.) College; Chatuana Summer
School, New York.

ELISABETH ORT, M.A. French
Wittenberg College, B.A., M.A.; Study and Travel in
France.

MILDRED PALMER, M.A. English
Marietta College, B.A., M.A.; Work in Journalism at
University of Wisconsin.

MABEL PHILPOTT Home Economics
Rochester Athenaeum; Columbia University; Graduate
Work, School of Education, Western Reserve Univer-
sity.

ALMA POLK, M.A. English
Miami University, B.A.; Western Reserve University,
M.A.

JEAN QUAY, M.A. Assistant Principal
Western Reserve University (College for Women),
B.A., M.A.

TREVOR REES, M.A. History
Coach: Heavy weight Football
Ohio State University, B.S. in Education; Columbia
University, M.A.

B. RELPH, M. E. Machine Shop
American School of Correspondence, M.E.

CHARLES C. REYNARD, M.A. English
Adviser: Cinema Club
Hiram College, B.A.; Michigan University, M.A.; Lin-
guistic Atlas; Early Modern English Dictionary.

EDITH I. SCRIBNER, M.A. Biology
University of Vermont, Ph.B.; Arnold College of
Physical Education; Western Reserve University, M.A.

ENGLISH



Standing: Miss Palmer, Miss Lindsay, Miss Wolf, Miss Clendenen. **Sitting:** Mr. Todd, Miss Zuck, Miss Wright, Miss Dickson, Miss Polk, Mr. McNeill.

INDUSTRIAL AND HOUSEHOLD ARTS



Left to Right: Mr. Foote, Mr. Craig, Miss Klipple, Miss Philpott, Miss Carpenter, Mr. Relph.

FLORENCE SHAFFER, B.M. Music
 Director of Vocal Music
 Mt. Union College, B.M., Public School Music, Certificate.

JOHN L. SNAVELY, M.A. Economics; Algebra
 Adviser: Chess and Checker Club
 Otterbein College, B.S.; Western Reserve University, M.A.

ANNA M. SOUTAR, M.A. Commercial Geography
 Ohio University, B.S.; New York University, M.A.

GEORGE E. TODD, M.A. English
 Marshall College, B.S.; Northwestern University, M.A.

EDGAR E. VANCE, B.S. Commercial
 Ohio State University, B.S. in Business Administration;
 B.S. in Education.

DOUGLAS W. VIVIAN Physical Education
 Coach: Boys' Swimming
 Battle Creek College; University of Wisconsin.

WILLIAM F. WALTON, B.A. Spanish; History
 Coach: Hockey
 Western Reserve University, B.A.; Graduate Work,
 Western Reserve University.

ELIZABETH WENGER, B.A. Commercial
 Findlay College, B.A.; Graduate Work, Western Reserve University; University of Wisconsin.

F. E. WILLIAMS, B.A. Mathematics
 Adviser: Hi-Y
 Otterbein College, B.A.

ROY H. WISECUP, B.S. Commercial
 Coach: Baseball; Basketball
 Miami University, B.S.

RACHAEL ADELIN WOLF, B.A. English
 Ohio Wesleyan University, B.A.; Graduate Work, University of Wisconsin; Harvard University; Rhode Island College of Education; Western Reserve University.

CLARA WOOD, B.A. Physical Education
 Adviser: Girls' Athletic Council; Riding Club
 Lake Erie College, B.A.; Certificate of Physical Education, Lake Erie College.

OLIVE WOOWARD, M.A. German
 Adviser: Student Council; German Club
 University of Oregon, B.A., M.A.; University of Michigan; University of Berlin; University of Marburg.

HELEN B. WRIGHT, M.A. English
 Head of English Department
 Western Reserve University (Flora Stone Mather), B.A.; Graduate Work, Columbia University; Western Reserve University, M.A.

ALICE MARTHA ZUCK, M.A. English; Spanish
 Lebanon Valley College, B.A.; Ohio State University, M.A., B.S.; Study and Travel in Spain; Secretarial Course, Rockford College for Women, Rockford, Illinois.

COMMERCIAL



Standing: Miss DuHadway, Miss Junk, Miss Soutar, Miss Hubinger. Sitting: Mr. Vance, Miss Kurtz, Mr. Louis, Mr. Wisecup, Miss Wenger, Mr. Leist.



Strike?

S-H-A-W

Eat 'em up

Campus life

Their pledge

α shuttle

snap page

▶▶▶ Classes ▶▶▶

Mid-Year Commencement

Thursday, January 25, 1940

I

Processional Victoria Teixeira
Shaw High School Orchestra
Milton G. Niergarth, Directing

II

(a) Men and Angels Sing, John and T. D. Edwards Arr.
(b) Dusk A. Gretchaninof
Shaw A Cappella Choir
Florence Shaffer, Directing

III

Invocation Rev. Lloyd Pobst
Pastor of East Cleveland Baptist Church

IV

Violin Solo Czardas Monti
Stanley Harris
Accompanist—Marcile Cox

V

Address, The Purposes of Education Charles H. Lake
Superintendent of Schools, Cleveland, Ohio

VI

(a) A Violin Is Singing In The Street Ukrainian Folk Song
(b) John Peel Old English Hunting Song Arr.
Shaw A Cappella Choir

VII

Presentation of Class Marion C. Dietrich
Principal of Shaw High School

VIII

Presentation of Diplomas Mr. C. W. Kimmel
President, East Cleveland Board of Education

January Class

Officers

RICHARD R. PALMER

Class Officer (Pres.); Student Council (Treas.); Junior Kiwanian; Football (Capt.); Basketball (Capt.); Reserve Basketball; Varsity S Club (V. Pres., Treas.); Hi-Y (Pres., V. Pres.); Monitor Committee.



VIRGINIA ANNE ESCH

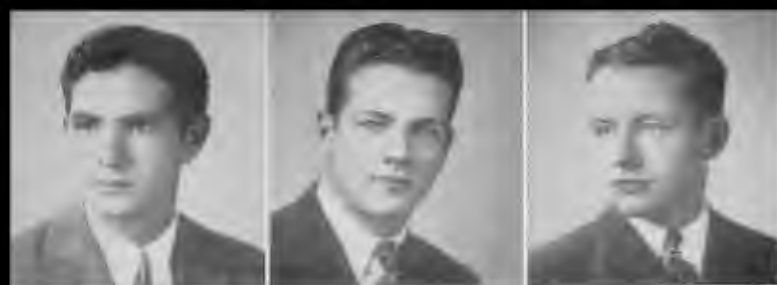
Honor Society; Class Officer (V. Pres.); Student Council (V. Pres., Sec.); Athletic Council (Pres.); Leaders' Club; Tarpon (Treas.); Volleyball; Basketball; S Letter Girl; S Pin Girl; Life-saving; Riding Club; Modern Dancing; Sophomore Friendship Club (Pres., V. Pres.); Senior Friendship Club (Pres., V. Pres.); Dramatic Club; History Club; Latin Club; Monitor Committee.



HARRY BREDENBERG

Class Officer (Sec.-Treas.); Junior Kiwanian; Football; Lightweight Football; Varsity S Club; Radio Club (V. Pres.); Hi-Y; Monitor Committee.





EMILIO ABAZIO—Football; Baseball.

WILLIAM ALBERT ALDEN—Band; Orchestra; HI-Y.

JOHN S. BABCOCK—Swimming; Rifle Club (Treas., Sec.); Rifle Team.



JOHN WILLIAM BADGER—Honor Society; Observer Editorial Staff; Band; Orchestra; HI-Y; Monitor Committee.

ARLINE BAIN—Sophomore Friendship Club; Senior Friendship Club; Monitor Committee.

SARAH BARAKIAN—Volleyball; Basketball; Girls' Glee Club; Sophomore Friendship Club; Senior Friendship Club; Health Club.



MARGUERITE BARCH—Sophomore Friendship Club; Senior Friendship Club; Sociology Club; Philomathean Club; Health Club; Monitor Committee.

JOHN BARRY—Lightweight Football; Basketball; Reserve Basketball; Varsity S Club; Band; Orchestra; Monitor Committee.

MORTON H. BAXT—Observer Editorial Staff; Science Club.



ANNE BAYER—Honor Society; Volleyball; Basketball; Baseball; Sophomore Friendship Club; Senior Friendship Club; Health Club; Monitor Committee.

ELSIE PAULINE BELGAN—Observer Business Staff; Leaders' Club; Volleyball; Basketball; Baseball; Sophomore Friendship Club; Senior Friendship Club; Dramatic Club; Monitor Committee.

KATHLEEN BENSON—Sophomore Friendship Club; Senior Friendship Club; Health Club.



JOHN BERR—Football; Varsity S Club.

ERNEST BINDER—Lightweight Football; Reserve Basketball; Tennis; Boys' Glee Club; A Cappella Choir; HI-Y; Chess and Checker Club (Pres., V. Pres.); Monitor Committee.

THOMAS C. BIRTLEY—Swimming; Dramatic Club; Latin Club; Monitor Committee.



JAMES A. BISHOP—Shaw Safety Patrol (Capt).

KENNETH W. BLAUMAN—Riding Club; Rifle Club; Movie Crew; Photographic Club; Chess and Checker Club.

ROBERTA BLAUMAN—Student Council; Leaders' Club; Sophomore Friendship Club (Treas.); Senior Friendship Club (H.R. Capt.); Dramatic Club; Health Club (H.R. Capt); Monitor Committee.



BETTY JANE BLUMQUIST—Leaders' Club; Sophomore Friendship Club; Senior Friendship Club; Whirlie Club (Treas.); Monitor Committee.

JEANNE BOLTZ—Student Council; Sophomore Friendship Club; Senior Friendship Club; Dramatic Club; History Club; Health Club; Monitor Committee.

BARK H. BOW—Honor Society; Lightweight Football.

HELEN BRADLEY—Basketball; Sophomore Friendship Club; Senior Friendship Club; History Club; Philomathean Club (Treas.); Health Club; Debate Club.

CYNTHIA BROWN—Student Council; Observer Business Staff; Leaders' Club (V. Pres.); Tarpon; Sophomore Friendship Club (H.E. Capt.); Senior Friendship Club (Cabinet); Dramatic Club; Art Club (V. Pres., Pres.); History Club; French Club; Health Club.

WILLIAM BROWN—H-I-Y; Dramatic Club; History Club; Debate Club; Cheerleader; Monitor Committee.



FRANCES BUDENZ—Honor Society; Observer Staff; Sophomore Friendship Club (Cabinet); Senior Friendship Club; Health Club; Monitor Committee.

BILL BUNCE—Tennis; Debate Club; Monitor Committee.

HARRY L. BURKHART—Monitor Committee.



CHARLES BURIAN

ROBERT CABLE

MARIE P. CALDWELL—Baseball; Sophomore Friendship Club.



KEITH CARLSON—Band.

MILDRED CARLSON—Tarpon; Life-saving; Sophomore Friendship Club; Senior Friendship Club; Whirl Club; Monitor Committee.

ROBERT E. CHEEKS—Boys' Glee Club; A Cappella Choir.



LEONA CHESNICK—Sophomore Friendship Club; Senior Friendship Club; Sociology Club; German Club; Debate Club; Monitor Committee.

QUINTY P. CIOLFI, JR.—Football.

ROBERT J. COHN—History Club; Chess and Checker Club.



ELINOR CONNOES—Sophomore Friendship Club; Senior Friendship Club; Health Club; Monitor Committee.

BOB COOPER—Track.

LEONARD COUGHLIN



MARIAN CRAIGIE—Leaders' Club; Tarpon; Volleyball; Basketball; Baseball; Sophomore Friendship Club (Sec.); Senior Friendship Club (H.E. Capt.); Dramatic Club; Art Club.

LOIS CROSS—Life-saving; Senior Friendship Club; German Club; Monitor Committee.

PETER CURRAN—Swimming; Whirl Club; Stamp Club.





ANNETTE DEIBEL—Honor Society; Observer Editorial Staff; Sophomore Friendship Club; Senior Friendship Club; Dramatic Club; Sociology Club; German Club; Latin Club; Lotophagi Club (Sec.-Treas.); Debate Club; Monitor Committee.

HARRIETT DEMMERLE—Sophomore Friendship Club; Senior Friendship Club; History Club; Latin Club; Philomathean Club; Health Club; Monitor Committee.

CHARLES DENNIS—Swimming; Tennis; Varsity S Club; Orchestra; Rifle Club; Debate Club; Chess and Checker Club.



HAROLD DETHLOFF—Rifle Club.

RUTH DIPPEL—Sophomore Friendship Club; Senior Friendship Club; Health Club.

KENNETH WILLIAM DORAN—Cross Country; History Club; Monitor Committee.



ALLEN DREXEL—Honor Society; Observer Business Staff; Tennis; Rifle Club; Boys' Glee Club; A Cappella Choir.

RALPH DUNBAR—Monitor Committee.

ROBERT ELLIS—Observer Editorial Staff; Hockey; Boys' Glee Club; A Cappella Choir; Hi-Y; Art Club (Sec.-Treas.).



MAXINE ENGLE—Observer Editorial Staff; Leaders' Club; Volleyball; Basketball; Sophomore Friendship Club; Senior Friendship Club; Dramatic Club; Latin Club; Philomathean Club; Health Club; Debate Club; Monitor Committee.

FLORENCE ERICKSON—Girls' Glee Club; A Cappella Choir; Sophomore Friendship Club; Senior Friendship Club; Dramatic Club; German Club; Health Club; Monitor Committee.

ROBERT CHARLES EVANS—Football; Band; Hi-Y.



LILLIAN M. EWING

GEORGE FAERBER—Football; Lightweight Football; Track; Monitor Committee.

BETTY FERGUSON—Honor Society; Aqua-Dux; A Cappella Choir; Sophomore Friendship Club; Senior Friendship Club; Whirl Club (Treas.).



J. ALLEN FICKEN—Honor Society; Student Council; Observer Editorial Staff (News Editor); Boys' Glee Club (V. Pres.); A Cappella Choir; Hi-Y (Treas.); Monitor Committee; Home Room Pres.

JOHN FISKE—Cross Country; Track; Varsity S Club.

PEGGY FOLJAMBE—Honor Society; Girls' Glee Club (V. Pres.); A Cappella Choir; Senior Friendship Club; Chess and Checker Club (Sec.-Treas.).



ARTHUR J. FOOTE—Cross Country; Track; Varsity S Club.

BETTY FREAS—Sophomore Friendship Club; Senior Friendship Club; Dramatic Club; Monitor Committee.

ELEANOR FREDERICK—Sophomore Friendship Club; Senior Friendship Club; Health Club.

MARY ELLEN FULLER—Honor Society; Sophomore Friendship Club; Senior Friendship Club; Art Club; Sociology Club (Sec.); German Club; Latin Club; Philomathean Club; Monitor Committee.

HARRY G. GALESE—Baseball; Riding Club.

MELVIN GANS—Monitor Committee.

RUBY GETTINGS—Honor Society; Orchestra; Sophomore Friendship Club; Senior Friendship Club; Dramatic Club; Sociology Club; German Club; Latin Club; Philomathean Club; Cief Club; Monitor Committee.

WILBERT N. GOWER—Football; Basketball; Reserve Basketball; Varsity S Club; Movie Crew; Stage Crew.

WILLIAM J. GRAY—Art Club.

JANE GREEN—Leaders' Club; Sophomore Friendship Club; Senior Friendship Club.

WILLIAM D. GREEN—History Club; Debate Club (Treas.); Monitor Committee.

ESTHER GREIG—Honor Society; Junior Red Cross (V. Pres.); Sophomore Friendship Club; Senior Friendship Club; Monitor Committee.

HOMER GROB—Observer Editorial Staff.

JANE HAAG—Sophomore Friendship Club; Senior Friendship Club; Health Club.

OLIVER HAAS—Band; Monitor Committee.

STANLEY HARRIS—Honor Society; Observer Editorial Staff; Band; Orchestra; Cief Club (Pres.); Monitor Committee.

MAE HODGSON—Honor Society; A Cappella Choir; Senior Friendship Club; Art Club; Sociology Club (V. Pres.).

MARGUERITE HOFFACKER—Leaders' Club; Volleyball; Sophomore Friendship Club; Senior Friendship Club (H.R. Capt.); German Club; Latin Club; Cief Club; Modern Dancing; Monitor Committee.

MARIE R. HUBBELL—Hockey; Leaders' Club; Sophomore Friendship Club; Senior Friendship Club; Health Club.

JOSEPH JENKINS—Lightweight Football; Cross Country; History Club; Monitor Committee.

JAMES JOHNSTON—Lightweight Football; Rifle Club; A Cappella Choir.

JAYNE JOHNSTON—Leaders' Club; Tarpon; Basketball; Sophomore Friendship Club (H.R. Capt.); Senior Friendship Club (H.R. Capt.); Dramatic Club; Lotophagi Club (V. Pres.); Cief Club (Sec.).

MARILYN M. JONES—Tarpon; Life-saving; Sophomore Friendship Club; Senior Friendship Club; Health Club; Monitor Committee.

GWEN JONES—Volleyball; Basketball; Sophomore Friendship Club; Senior Friendship Club; Health Club (H.R. Capt.).





RICHARD JONES

ROBERT KAGY—Mid-Year; Movie Crew; Stage Crew; Globe Trotters Club; Boosters' Club (Exec. Comm.).

FRANK KAPPEN—Cross Country; Track; Varsity S Club; Rifle Club (Pres., V. Pres., Sec.); Rifle Team.



MARY JANE KEEFER—Leaders' Club; Tarpon; Volleyball; Basketball; Baseball; Life-saving; Sophomore Friendship Club; Dramatic Club; Monitor Committee.

BOB KENWORTHY—Observer Business Staff; Cross Country; Track; Hockey; Varsity S Club.

LA VERNNE KEPTNER—Leaders' Club; Sophomore Friendship Club; Senior Friendship Club; Dramatic Club; Monitor Committee.



FRANK M. LARNED—Observer Business Staff; Rifle Club (Sec.); Rifle Team; Debate Team; Chess and Checker Club.

MABEL A. LAVIGNA—Girls' Glee Club; Sophomore Friendship Club; Senior Friendship Club; Health Club; Monitor Committee.

DOROTHY P. LAYMAN—Monitor Committee.



PHYLISS JANE LELAND—Observer Business Staff; Band; Sophomore Friendship Club; Senior Friendship Club (Cabinet); Sociology Club; History Club; German Club; Latin Club; Whirl Club; Monitor Committee.

SHIRLEY LENKER—Basketball (Capt.); Sophomore Friendship Club; Senior Friendship Club; Sociology Club (Treas.); French Club; Health Club; Monitor Committee.

BERTHA M. LEWIS—Senior Friendship Club; Monitor Committee.



JANET LEWIS—Leaders' Club; Volleyball; Basketball; Sophomore Friendship Club; Senior Friendship Club; Health Club.

MARGARET MARY LYNCH—Honor Society (Pres.); Athletic Council; Tarpon; Aqua-Dux; Girls' Glee Club; A Cappella Choir; Sophomore Friendship Club; Latin Club (V. Pres., Pres.).

JEAN McHUGH—Honor Society; Sophomore Friendship Club; Senior Friendship Club (H.R. Capt.); Health Club (H.E. Capt.); Monitor Committee.



VERNON MILLER—Football; Track; Hi-Y; Latin Club.

DOROTHY MORRIS—Observer Business Staff; Leaders' Club; Volleyball; Basketball; Baseball; Sophomore Friendship Club (H.R. Capt.); Senior Friendship Club (H.E. Capt.); Latin Club; Health Club.

TED NEEDLES—Honor Society; Football; Hi-Y; Latin Club; Chess and Checker Club.



BRUCE PATTERSON—Riding Club; Boys' Glee Club; A Cappella Choir; Whirl Club.

GEORGE PEERS—Honor Society; Student Council; Observer Editorial Staff; Track; Varsity S Club; Hi-Y; Photographic Club (Pres.); Monitor Committee.

VIOLET PETSCHL—Honor Society; Senior Friendship Club; Health Club.

RICHARD PEW—Swimming; HI-Y.

DORIS MAE PIKE—Tarpon; Volleyball; Basketball; Baseball; Band (Drum Major); Sophomore Friendship Club; Senior Friendship Club; Health Club; Modern Dance; Monitor Committee.

GEORGE POPE

VIRGINIA MAXINE PORTER

BOB PRICE—Swimming; HI-Y.

DORIS E. RADTKE—Leaders' Club; Volleyball; Basketball; Baseball; Army-Navy; Sophomore Friendship Club; Senior Friendship Club; Health Club.

BETTY REICHARD—Observer Editorial Staff; Basketball; Sophomore Friendship Club; Senior Friendship Club; Health Club; Monitor Committee.

EUGENE REMINGER

JOE ROGAZIONE

A. J. ROSEN—Football; Reserve Basketball; HI-Y; Debate Club; Monitor Committee.

MARY RUGGIERO—Leaders' Club; Baseball; Senior Friendship Club; Health Club.

JANE SANBORN—Leaders' Club; Volleyball; Basketball; Sophomore Friendship Club; Senior Friendship Club; Health Club; Monitor Committee.

CLARA SCHILLER—Sophomore Friendship Club; Senior Friendship Club; Health Club.

ESTHER MARIE SCHMIDT—Swimming, Art Club; Sociology Club.

MARJORIE HELEN SCHNEIDER—Observer Editorial Staff; Leaders' Club; Volleyball; Basketball; Baseball; Sophomore Friendship Club; Senior Friendship Club; History Club; Health Club.

DORIS SCHWARTZ—Observer Editorial Staff; Leaders' Club; Volleyball; Baseball; Sophomore Friendship Club; Senior Friendship Club; Health Club.

HARRIETT JANE SCOTT—Leaders' Club; Sophomore Friendship Club; Senior Friendship Club; Health Club; Monitor Committee

RUTH MAY SIEFERD—Honor Society; Student Council (V. Pres.); Leaders' Club; Sophomore Friendship Club (H.R. Capt.); Senior Friendship Club; Latin Club; Monitor Committee.

WALLACE SIGWORTH—Hockey; Rifle Team; HI-Y.

EVELYN SIMONELLI—Sophomore Friendship Club; Senior Friendship Club; Health Club; Monitor Committee.

EVELYN RUTH SOBUL—Observer Business Staff; Girls' Glee Club; A Cappella Choir; Senior Friendship Club; Health Club.





LILLIAN SOUSA—Girls' Glee Club; A Cappella Choir; Sophomore Friendship Club; Senior Friendship Club; Health Club.

BETTY SPARE—Tarpon; Life-saving; Aqua-Dux; Sophomore Friendship Club; Senior Friendship Club.

RICHARD C. SPRENGER—Lightweight Football; Hockey; Boys' Glee Club; A Cappella Choir; Mid-Year.

DOUGLAS STANCOMBE—Rifle Club; Monitor Committee.

JACK STANDFIELD—Observer Business Staff; Mid-Year; Sociology Club.

BARBARA STEPHENSON—Honor Society; Tarpon; Volleyball; Baseball; Girls' Glee Club; A Cappella Choir; Sophomore Friendship Club; Senior Friendship Club (Sec.); Health Club; Modern Dance Group; Monitor Committee.

ROGER STERN—Track.

DOROTHY STORY—Shuttle Business Staff; Volleyball; Basketball; Baseball; Senior Friendship Club.

DON SULLIVAN

CARL H. SUNDMAN—Band; Rifle Club; Rifle Team; Photographic Club.

MYRON N. SWITZER—Rifle Club; Hi-Y; Mid-Year.

NICHOLAS RICHARD TABAGLIA—Lightweight Football; Band; Monitor Committee.

BLACK AND RED

Black and Red, forge ahead
 In the battles they have led,
 When our Shaw boys come rolling along.
 Back them up with a shout
 That ten thousand throats give out,
 When the Shaw boys come rolling along.

Chorus—

Then it's heigh, heigh, hee, on to victory,
 Shout out their praises loud and strong.

RAH! RAH!

They will fight, fight, fight,
 With courage and with might,
 See our Shaw boys come rolling along.

KEEP THEM ROLLING!

See our Shaw boys come rolling along.

HELEN TEAL—Honor Society (V. Pres.); Student Council; Leaders' Club; Basketball; Sophomore Friendship Club; Senior Friendship Club; Sociology Club (Pres.); Latin Club (Treas.); Monitor Committee.

ROBERT TINDALL—Monitor Committee.

JOHN WALKER—Student Council (Pres.); Swimming; Band; HI-Y; Monitor Committee.



BOB WALKER—Swimming; Varsity S Club; Monitor Committee.

GEORGE RAYMOND WEBSTER—Photographic Club (V. Pres.); Stamp Club; Monitor Committee.

NORMA WHITMARSH—Girls' Glee Club; Senior Friendship Club; Sociology Club; Health Club.



JACK WINTERS—Photographic Club.

JOAN WOLFRAM—Honor Society (Sec.-Treas.); Girls' Glee Club; Sophomore Friendship Club; Senior Friendship Club; Dramatic Club; Sociology Club; History Club; German Club; Latin Club; Health Club; Debate Club.

PHYLLIS WOODRICH—Volleyball; Basketball (Capt.); Sophomore Friendship Club; Senior Friendship Club; Health Club.



ALLEN WURZMAN—Honor Society; Debate Club (V. Pres., Treas.); National Forensic League (Pres.).

PEGGY YEA—Basketball; Riding Club; Sophomore Friendship Club; Senior Friendship Club; Health Club; Monitor Committee.

PAUL YUENGERT—Baseball; Chess and Checker Club.



VICTORY SONG

Hail the sons of old Shaw High School
 Who will dare to play the game.
 Hail to all the valiant heroes
 Who have helped to win her fame.
 Black and red they proudly carry
 In the thickest of the fray,
 While the sons of Shaw are marching
 Marching on to victory.

Alma Mater

John Howard '31

Sing with praise to old Shaw High School,
Glorify her name.
In the hall of school day victories
Shaw has won her fame;
While at war with grim Defeat
She learned to play the game.
Sing with praise to old Shaw High School,
Glorify her name.

Sing of love for dear Shaw High School,
Alma Mater fair;
Sharing sadness, offering gladness,
Tendering ev'ry care.
Teachers, students, fathers, mothers,
All in tribute share;
Sing of love for dear Shaw High School,
Alma Mater fair.

June Class

Officers

DONALD BALES

Honor Society; Class Officer (Pres.); Student Council (Treas.); Junior Kiwanian; Basketball; Reserve Basketball; Varsity S Club; Band; Hi-Y (Sec.); Monitor Committee.



JEAN LOOMIS

Honor Society; Class Officer (V. Pres.); Student Council (Sec.); Athletic Council (Pres.); Leaders' Club (Pres.); Tarpon; Yale-Harvard; Army-Navy; Baseball; S Letter Girl; S Pin Girl; Life-saving; Sophomore Friendship Club (Pres.); Senior Friendship Club (Pres.); Monitor Committee.



WILLIAM HAKER

Class Officer (Sec.-Treas.); Student Council; Football; Lightweight Football; Baseball; Track; Varsity S Club (Pres., Treas.); Hi-Y; Monitor Committee.





THOMAS AINGWORTH—Lightweight Football; Boys' Glee Club; A Cappella Choir.

MARTHA A. AKERS—Jr. Red Cross Officer (V. Pres.); Athletic Council; Leaders' Club; Tarpon (V. Pres.); Volleyball; Basketball; Baseball; Life-saving; Sophomore Friendship Club (Sec.); Senior Friendship Club; History Club; Health Club; Modern Dancing.

BILL ALLAN—Rise Club; Photographic Club (Pres.).



ELOISE ANDERSON—Student Council; Athletic Council (Sec. Treas.); Leaders' Club; Volleyball; Basketball; Baseball; S Letter Girl; Sophomore Friendship Club; Senior Friendship Club; History Club; Health Club; Monitor Committee.

SALLY ANDREWS—Honor Society; Leaders' Club; Basketball; Sophomore Friendship Club; Senior Friendship Club.

NELLIE ARBAUGH—Volleyball; Basketball; Baseball; Sophomore Friendship Club; Senior Friendship Club; History Club; Latin Club; Health Club.



JANE ARMSTRONG—Volleyball; Basketball; Baseball; Girls' Glee Club; Sophomore Friendship Club; Senior Friendship Club; Health Club; Modern Dancing.

MARGARET AULENBACHER—Leaders' Club; Volleyball; Basketball; Baseball; Sophomore Friendship Club; Senior Friendship Club; History Club; Health Club.

JOAN AYERS—Shuttle Business Staff; Tarpon; Sophomore Friendship Club; Senior Friendship Club; Latin Club; Health Club (Treas.); Debate Club; Monitor Committee.



BETTY ANN BAILEY—Leaders' Club; Volleyball; Basketball; Sophomore Friendship Club; Senior Friendship Club; History Club; Latin Club; Health Club (Pres.); H. R. President.

NORINE BAILEY—Leaders' Club; Volleyball; Basketball; Baseball; Sophomore Friendship Club; Senior Friendship Club; Sociology Club; History Club; Health Club; Modern Dancing; Monitor Committee.

VIRGINIA BALDWIN—Sophomore Friendship Club; Senior Friendship Club; Sociology Club; French Club; Philomathean Club.



VIRGINIA BALOGH—Observer Editorial Staff; Leaders' Club; Basketball; Sophomore Friendship Club; Senior Friendship Club; Health Club.

EDWARD BALUCKIAN—Lightweight Football; History Club.

JANET BARCLAY—Sophomore Friendship Club; Senior Friendship Club; Ring Group; Health Club; Monitor Committee.



JEAN BARNARD—Sophomore Friendship Club; Senior Friendship Club; Mid-Year; Dramatic Club; German Club; Latin Club; Philomathean Club; Lotophagi Club; Debate Club; National Forensic League.

ALBERT H. BARNES—Track; A Cappella Choir; Chess and Checker Club.

EVELYN JUNE BARTON—Honor Society; Tarpon; Basketball; Baseball; Life-saving; Orchestra; Sophomore Friendship Club; Senior Friendship Club; Health Club; Debate Club.



AUDREY BATT—Student Council; Leaders' Club; Basketball; Life-saving; Sophomore Friendship Club; Senior Friendship Club (H.R. Capt.); Health Club; Monitor Committee.

SARA JANE BECHTEL—Sophomore Friendship Club; Senior Friendship Club; Latin Club; Health Club; Monitor Committee.

RUTH EILEEN BERKEY—Leaders' Club (Pres.); Tarpon; Volleyball; Basketball; Riding Club; Girls' Glee Club (Sec.); A Cappella Choir; Sophomore Friendship Club; Senior Friendship Club; Philomathean Club; Monitor Committee.

BILLIE BERNHARDT—Sophomore Friendship Club; Senior Friendship Club; Debate Club (V. Pres.); Monitor Committee.



RUTH CAROL BERRY—Student Council (V. Pres.); Jr. Red Cross Officer (Pres.); Leaders' Club; Volleyball; Basketball; Baseball; Sophomore Friendship Club; Senior Friendship Club; Dramatic Club; History Club (Pres., V. Pres.); Health Club (V. Pres.).



HELEN M. BIDGOOD—A Cappella Choir; Sophomore Friendship Club; Senior Friendship Club.

ROY BIET—Lightweight Football; Boys' Glee Club; A Cappella Choir; Hi-Y; Monitor Committee.

BILL BISSON—Basketball; Reserve Basketball; Varsity S Club; Monitor Committee.

JAMES W. BOLMEYER—Hi-Y; Debate Club; Monitor Committee.



FRANZ BOSWORTH—Swimming.

DOROTHY ELLEN BRADY—Student Council; Observer Business Staff; Leaders' Club; Tarpon; Volleyball; Basketball; Baseball; Life-saving; Sophomore Friendship Club; Senior Friendship Club (Sec.); Health Club; Monitor Committee.

MARGARET BREMNER—Tarpon; Basketball; Life-saving; Aqua-Dux; Senior Friendship Club; Dramatic Club; Sociology Club; History Club; Health Club (H.R. Capt.).



PATRICIA A. BRICK—Leaders' Club; Volleyball; Basketball; Baseball; Life-saving; Sophomore Friendship Club; Senior Friendship Club; History Club; French Club; Health Club.

ALVIN BRIGHTMAN—Band; Hi-Y; Debate Club; Monitor Committee.

MARIE A. BROW—Senior Friendship Club; Lotophagi Club.



CONSTANCE BROWN—Leaders' Club; Tarpon; Baseball; Life-saving; Aqua-Dux; Senior Friendship Club; Dramatic Club; Health Club; Monitor Committee.

JACK BRUGMANN

JAMES R. BRYANT—Student Council; Football; Swimming; Varsity S Club; Hi-Y; History Club (Treas.); Homeroom (V. Pres.); Monitor Committee.



EDITH BUCKHALT—Observer Business Staff; Tarpon; Volleyball; Baseball; Life-saving; Aqua-Dux; Sophomore Friendship Club; Senior Friendship Club; History Club; Monitor Committee.

SHIRLEY BURGER—Leaders' Club; Volleyball; Basketball; Riding Club; Sophomore Friendship Club; Senior Friendship Club; Health Club; Chess and Checker Club; Monitor Committee.

JEANNE BURNS—Shuttle Business Staff; Baseball; Riding Club; Sophomore Friendship Club; Senior Friendship Club; Health Club; Modern Dancing; Monitor Committee.



DEWEY BURTON

BETTY BUSHEY—Leaders' Club; Volleyball; Basketball; Baseball; S Letter Girl; Aqua-Dux; Sophomore Friendship Club; Senior Friendship Club; Health Club.

IDA M. CALORI—Observer Editorial Staff; Girls' Glee Club; Senior Friendship Club; Health Club.





VIRGINIA MAE CARLSON—Senior Friendship Club; Health Club; Monitor Committee.

ROBERT L. CATLIN—Lightweight Football; Reserve Basketball; Track; Varsity S Club; Band; Hi-Y; Dramatic Club; Monitor Committee.

RICHARD E. CATON—Band; Hi-Y; German Club; Photographic Club; Debate Club; Whirl Club.



FLORENCE E. CHILAN—Honor Society; Senior Friendship Club; Latin Club (Pres., V. Pres., Sec.).

CHARLES WARREN CHUBBUCK—Band.

MARGARET CLARK—Senior Friendship Club; Health Club.



JACK CLARKE—Football; Reserve Basketball; Baseball; Varsity S Club; Monitor Committee.

MARION W. COATES—Volleyball; Basketball; Life-saving; Sophomore Friendship Club; Senior Friendship Club; Ring Group; Philomathean Club; Monitor Committee.

MARY LOUISE COBUEN—Honor Society; Student Council; Athletic Council (Pres.); Volleyball; Basketball; Baseball; S Letter Girl; Aqua-Dux; Girls' Glee Club (Pres.); A Cappella Choir; Sophomore Friendship Club (H.R. Capt.); Senior Friendship Club (Treas.).



LOUIS COHN—Swimming; Boys' Glee Club; Dramatic Club; Debate Club.

JOE CONDELL—Swimming; Track; Hi-Y; Monitor Committee.

JESSAMAE CONN—Honor Society; Tarpon; Volleyball; Basketball; Life-saving; Sophomore Friendship Club; Senior Friendship Club; Lotophagi Club (Pres.); Monitor Committee.



ROBERT CONROY

ED CONWAY—Track; Hi-Y.

BERTO M. COOK—A Cappella Choir.



BETTY JANE COOK—Tarpon; Volleyball; Basketball; Baseball; Sophomore Friendship Club; Senior Friendship Club; Sociology Club; German Club.

WILLIAM E. COOMBS

JAMES A. CORL—Swimming; Varsity S Club; Hi-Y (Sec.); Cheerleader (Capt.); Monitor Committee.



GEORGE CROOKHAM—Photographic Club; Monitor Committee.

WILLIAM CULLEN—Hi-Y; Monitor Committee.

BOB CUSTER—Football; Basketball; Reserve Basketball; Varsity S Club; Boys' Glee Club; A Cappella Choir; Hi-Y; Monitor Committee.

PETER D'ABATO—Football; Rifle Club; Monitor Committee.

JEAN DARNER—Riding Club; Girls' Glee Club; A Cappella Choir; Sophomore Friendship Club; Senior Friendship Club (H.E. Capt.); Health Club (H.E. Capt.).

SHIRLEY DEIKE—Basketball; Baseball; Girls' Glee Club; Sophomore Friendship Club; Senior Friendship Club; Dramatic Club; Philomathean Club; Health Club; Monitor Committee.

ROBERT E. DEMING

MARJORIE DENNIS—Volleyball; Basketball; Baseball; Sophomore Friendship Club; Senior Friendship Club; Latin Club; Health Club; Monitor Committee.

PHILIP DEBBY

RUTH DIAMOND—Senior Friendship Club; Monitor Committee.

JENNY DI BIANCA—Girls' Glee Club; Sophomore Friendship Club; Senior Friendship Club; Health Club; Debate Club.

MARION DIETRICH, JR.—Honor Society (Pres.); Student Council; Observer Editorial Staff (News & Editorial Editor); Junior Kiwanian; Football; Lightweight Football; Tennis; Varsity S Club; Band; HI-Y (Pres.); Debate (V. Pres.); National Forensic League.

GEORGE DILLEY

MARILYN DIPPEL—Honor Society; Sophomore Friendship Club; Senior Friendship Club; Art Club; French Club; Philomathean Club; Monitor Committee.

DOROTHY DISBRO—Monitor Committee.

DOROTHY DOMBROSKI—Sophomore Friendship Club; Senior Friendship Club; Health Club.

ARTHUR DOYLE—Basketball (Mgr.); Reserve Basketball (Mgr.); Varsity S Club; HI-Y.

VIRGINIA DRAGO—Observer Editorial Staff; Band; Orchestra; Sophomore Friendship Club; Senior Friendship Club (H.E. Capt.); French Club; Philomathean Club; Whirlie Club.

JEANNE DRAGOO—Volleyball; Sophomore Friendship Club; Senior Friendship Club; History Club; Philomathean Club; Health Club; Debate Club.

GRACE L. DUNCAN—Leaders' Club; Sophomore Friendship Club; German Club; Latin Club; Monitor Committee.

J. BRADLEY ECKERT—Rifle Club; HI-Y; Whirlie Club; Chess and Checker Club.

RUTH ELAINE EICHER—Honor Society; Leaders' Club; Volleyball; Sophomore Friendship Club; Senior Friendship Club; German Club; Latin Club; Health Club.

DOROTHY ELLIS—Shuttle Business Staff; Leaders' Club; Volleyball; Basketball; Sophomore Friendship Club (H.E. Capt.); Senior Friendship Club (H.E. Capt.); Dramatic Club; History Club; Health Club (H.E. Capt.); Modern Dancing.

ROBERT W. ENGEL—Monitor Committee.





JOHN ENGLEHORN—Football (Mgr.); Varsity S Club; 444-Year (Mgr.); Movie Crew; History Club; French Club; Debate Club; National Forensic League; Monitor Committee.

ELIZABETH ANN EVANS—Leaders' Club; Sophomore Friendship Club; Senior Friendship Club; French Club; Philomatheian Club (Pres.); Health Club (H.E. Capt.); Monitor Committee.

PAUL EVERSON—Boys' Glee Club; A Cappella Choir.



HERBERT FELDMAN—Lightweight Football.

MARIAN G. FELDNER—Shuttle Business Staff; Leaders' Club; Sophomore Friendship Club; Senior Friendship Club; Health Club; Monitor Committee.

AL FLOR—Football; Swimming; Varsity S Club; Hi-Y.



TOM FOLJAMBE—Football; Monitor Committee.

LOIS V. FOERGERSON—Baseball; Sophomore Friendship Club; Senior Friendship Club; Sociology Club.

MARIAN FOERGERSON—Sophomore Friendship Club; Senior Friendship Club; Health Club.



ELIZABETH FOSTER—Girls' Glee Club; Senior Friendship Club; Health Club; Dramatic Club.

DORIS M. FOX—Observer Business Staff; Athletic Council; Tarpon; Volleyball (Capt.); Basketball (Capt.); Life-saving; Aqua-Dux; Girls' Glee Club; Sophomore Friendship Club; Senior Friendship Club; Art Club; Monitor Committee.

JEANNE DOROTHY FOX—Shuttle Business Staff (Asst. Circulation Mgr.); Athletic Council; Leaders' Club; Tarpon; Volleyball; Basketball; Baseball; S Letter Girl; Life-saving; Aqua-Dux; Sophomore Friendship Club (H.E. Capt.); Senior Friendship Club (H.E. Capt.).



MYRTLE JANE FOX—Leaders' Club; Girls' Glee Club; A Cappella Choir; Sophomore Friendship Club; Senior Friendship Club; Health Club; Monitor Committee.

ELAINE FRANZ—Riding Club; Sophomore Friendship Club; Senior Friendship Club; Dramatic Club; Health Club; Whirl Club (V. Pres.); Monitor Committee.

LETTITA FEATTANNE—Honor Society; Observer Business Staff; Sophomore Friendship Club; Senior Friendship Club; Dramatic Club; Lotopnag; Club; Monitor Committee.



RITA B. FRIEDMAN—Honor Society; Observer Business Staff; Shuttle Editorial Staff; Volleyball; Basketball (Capt.); Baseball; Sophomore Friendship Club; Senior Friendship Club.

CHARLES GARDINER—Football; Lightweight Football; Hi-Y; Photographic Club; Debate Club; Monitor Committee.

KENT GEIGER—Honor Society (V. Pres.); Student Council; Junior Kiwanian; Football; Track; Varsity S Club (Pres.); Hi-Y; Mid-Year; Monitor Committee.



BETH ANN GIFFORD—Baseball; Sophomore Friendship Club; Senior Friendship Club; Dramatic Club; Modern Dancing; Monitor Committee.

DICK GLEASON—Basketball; Reserve Basketball; Varsity S Club; Dramatic Club; Monitor Committee.

JACK E. GOODWYN—Hockey, Varsity S Club; Monitor Committee.

BETTY J. GOSKE—Basketball; Sophomore Friendship Club; Senior Friendship Club; Health Club.

WARREN GOTTRON—Hi-Y; Monitor Committee.

ELIZABETH GRAHAM—Honor Society; Leaders' Club; Volleyball; Basketball; Sophomore Friendship Club; Senior Friendship Club; Dramatic Club; History Club; Health Club; Monitor Committee.

DOLORES GROTENRATH—Senior Friendship Club; Latin Club; Lotophagi Club.

HARRIETT R. GUSTAFSON—Leaders' Club; Volleyball; Basketball; Baseball; Sophomore Friendship Club; Senior Friendship Club; Health Club; Monitor Committee.

BETTE B. HABERER—Shuttle Business Staff (Circulation Mgr.); Leaders' Club; Sophomore Friendship Club; Senior Friendship Club; Monitor Committee.

BOB HAGAN—Swimming; Track; Monitor Committee.

RUSSELL L. HALL—Art Club.

MARYBELLE HANLON—A Cappella Choir; Sophomore Friendship Club; Senior Friendship Club; Health Club; Monitor Committee.

RALPH E. HAROLD—Photographic Club; Whirlo Club; Monitor Committee.

DOROTHY HAY—Sophomore Friendship Club; Senior Friendship Club.

RICHARD LEE HAYMAN—Boys' Glee Club; A Cappella Choir; French Club (V. Pres.); Latin Club (Treas.); Debate Club; National Forensic League; Stamp Club (Pres.).

DOROTHY H. HECKMAN—Volleyball; Sophomore Friendship Club; Senior Friendship Club; Health Club.

FRANK T. HEMLER—Band (Librarian, Student Director); Orchestra; Hi-Y.

RALPH HENNIE, JR.—Band; Orchestra.

HAROLD W. HODGES—Boys' Glee Club; A Cappella Choir.

WILLIAM R. HOFF—Hi-Y; German Club; Monitor Committee.

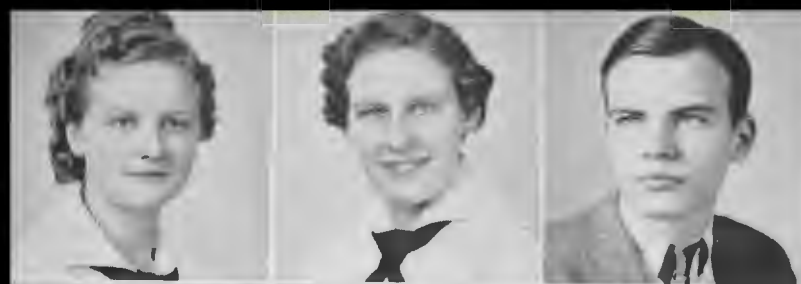
EDWIN HORNUNG—Monitor Committee.

JESSIE MAE HOWARD—Volleyball; Basketball; Sophomore Friendship Club; Senior Friendship Club; Health Club.

RAY HUGO

HELENE HUNTER—Honor Society; Observer Editorial Staff; Volleyball; Basketball; Baseball; Girls' Glee Club (Sec.); A Cappella Choir; Sophomore Friendship Club; Senior Friendship Club; Ring Group; Health Club.





WINIFRED HUNTER—Honor Society; Observer Business Staff (Circulation Mgr.); Basketball; Baseball; Band; Orchestra; Sophomore Friendship Club; Senior Friendship Club; German Club; Latin Club; Debate Club.

JOYCE HUNTOON—Sophomore Friendship Club; Senior Friendship Club (H.R. Capt.); Health Club; Monitor Committee.

HARRY IMMKE—Debate Club; Chess and Checker Club (Treas.).



ALVAH D. IVES

BARBARA JACOBS—Honor Society; Observer Editorial Staff (Managing Ed.); Sophomore Friendship Club; Senior Friendship Club; Dramatic Club; Art Club; Lotophagi Club.

LEONARD JARVIS—Band; Orchestra; Lotophagi Club; Clef Club; Monitor Committee.



DIANNE H. KAUFMAN—Sophomore Friendship Club; Senior Friendship Club; Sociology Club; Health Club (H.R. Capt.); Debate Club.

WILLIAM G. KEEFER—Football (Mgr.); Baseball; Varsity 8 Club; Hi-Y.

FRANCES M. KEIFFER—Leaders' Club; Volleyball; Basketball; Baseball; Girls' Glee Club; A Cappella Choir; Sophomore Friendship Club; Senior Friendship Club; Philomathean Club (Sec.).



MARGARET KEITH—Senior Friendship Club; Dramatic Club; German Club.

JEANNE KENNAED—Volleyball; Basketball; Baseball; Sophomore Friendship Club; Senior Friendship Club (H.R. Capt.); Dramatic Club; History Club; Health Club (H.E. Capt.).

BOB KENNEDY—Observer Business Staff; Track; Dramatic Club; Art Club.



MARILYN JANET KING—Observer Business Staff; Leaders' Club; Basketball; Baseball; Riding Club; Sophomore Friendship Club; Senior Friendship Club; Health Club (H.E. Capt.); Whirlie Club (Sec.); Monitor Committee.

ROBERT E. KINKELAAR—Student Council; Football.

AURELIA C. KLEIN—Sophomore Friendship Club; Senior Friendship Club; Philomathean Club.



MILDRED KLEINSMITH—Dramatic Club.

DORIS KNAEBEL

ELEANOR I. KNAPP—Leaders' Club; Volleyball; Basketball; Baseball; Sophomore Friendship Club; Senior Friendship Club (H.R. Capt.); Dramatic Club; Whirlie Club (Sec.).



DANIEL KRALIK

PHYLLIS KRUSER—Honor Society; Basketball; Band; Girls' Glee Club; Sophomore Friendship Club; Senior Friendship Club; Sociology Club (V. Pres.); Health Club; Debate Club; Ring Group; Monitor Committee.

FLORENCE E. KUMHALL—A Cappella Choir; Sophomore Friendship Club; Senior Friendship Club; Art Club.

BETTY JAYNE LaFRANCE—Riding Club; Sophomore Friendship Club; Senior Friendship Club; Health Club; Monitor Committee.

VIRGINIA LAMBERT—Sophomore Friendship Club; Clef Club (V. Pres.).

FRANK F. LANGER—Baseball; Cross Country; Track; Varsity S Club; Hi-Y; Monitor Committee.

JACK LAWRENCE—Football; Boys' Glee Club (Sec.-Treas.); A Cappella Choir; Photographic Club.

RITA LEAR—Basketball; Senior Friendship Club; Health Club.

BEVERLY LEES—Leaders' Club; Girls' Glee Club; A Cappella Choir; Sophomore Friendship Club; Senior Friendship Club (H.R. Capt.); Health Club.

ADELE P. LEWAND—Senior Friendship Club; Riding Club.

ROBERT A. LOFTUS—Jr. Red Cross Officer (Pres.); Lightweight Football; Swimming (Co-Capt.); Varsity S Club; Hi-Y; History Club; H.R. Pres.; Cheerleader; Monitor Committee.

RUBY M. LONG—A Cappella Choir; Sophomore Friendship Club; Senior Friendship Club.

KATHARINE LOWRY—Honor Society (Sec.-Treas.); Student Council; Observer Business Staff (Circulation Mgr.); Athletic Council; Tarpon; Life-saving; Aqua-Dux; A Cappella Choir; Sophomore Friendship Club; Senior Friendship Club; Mid-Year; Dramatic Club.

WILLIAM J. LOWRY—Honor Society; Student Council (Pres.); Shuttle Editorial Staff (Asst. Editor, Editor-in-Chief); Junior Kiwanian; Hi-Y (V. Pres., Treas.); Debate Club; National Forensic League.

ROBERT G. LUCAS—Football; Lightweight Football; Reserve Basketball; Swimming; Track; Varsity S Club; Hi-Y; Monitor Committee.

JOHN A. LYNCH—Monitor Committee.

JAMES MAYFIELD—Swimming; Track; Varsity S Club; Riding Club.

CHARLES MacDONALD—Monitor Committee.

TOM McNAMEE—Debate Club; Whirio Club.

JACK FREDRICK MANN—Whirio Club.

NANCY MANNING—Senior Friendship Club; Dramatic Club; French Club.

FLOYD MARSHALL—Football; Monitor Committee.

VIVIAN MARIE MARTIN—A Cappella Choir; Senior Friendship Club; Health Club.

VIRGINIA MARZI—Leaders' Club; Sophomore Friendship Club; Senior Friendship Club; Sociology Club; History Club; Health Club; Monitor Committee.





WESLEY MATTERN—Band; Hi-Y; Monitor Committee.

ANNE MAULORICO—Senior Friendship Club; Health Club; Monitor Committee.

MARIAN McANDREWS—Sophomore Friendship Club; Senior Friendship Club; Health Club.



LOIS McCULLOUGH—Observer Editorial Staff; Observer Business Staff; Tarpon; Riding Club; Sophomore Friendship Club; Senior Friendship Club; Mid-Year; Dramatic Club; Lotophagi Club; Health Club (H.R. Capt.); Debate Club; National Forensic League.

EDWARD ATKINSON McLEOD—Honor Society; Observer Editorial Staff (Editor); Swimming; Riding Club; German Club.

RICHARD L. McMILLEN—Cross Country; Track; Varsity S Club; Hi-Y; Latin Club.



VIVIAN McMOREOW—Basketball; Sophomore Friendship Club; Senior Friendship Club; Health Club; Whirl Club; Monitor Committee.

EUGENE LAURENCE MEADE—Rifle Club (Sec., Mgr.-Coach); Rifle Team (Mgr.-Coach); Movie Crew; Photographic Club.

ELAINE MERRIAM—Volleyball; Basketball; Sophomore Friendship Club; Senior Friendship Club; Health Club.



JOHN M. MERRIELL—Honor Society; Band; Cief Club.

MARTIN MESHENBERG—Honor Society; Boys' Glee Club (V. Pres.); A Cappella Choir; Latin Club (V. Pres.); Debate Club; National Forensic League; Stamp Club.

TED MEYER—Swimming; Track; Hi-Y; Latin Club.



HERBERT S. MIGGANTZ—Orchestra; German Club; Radio Club; Monitor Committee.

LUTHER MILLER—Hi-Y; Photographic Club.

JUNE ELIZABETH MILLS—Sophomore Friendship Club (H.R. Capt.); Senior Friendship Club; Mid-Year; Philomathean Club; Lotophagi Club; Health Club.



DOROTHY LEE MOONEY—Sophomore Friendship Club; Senior Friendship Club; Sociology Club (Sec.); History Club; Philomathean Club; Health Club; Monitor Committee.

ROBERT MORGAN—Movie Crew; Whirl Club; Monitor Committee.

CARL MORGENSTERN—Honor Society; Observer Editorial Staff; Shuttle Editorial Staff; Tennis; Varsity S Club; Hi-Y; History Club; German Club (Treas., Sec.); Debate Club (Pres.); National Forensic League (Pres.).



FAYE RUTH MORITZ—French Club; Photographic Club; Monitor Committee.

MONA MOUGHTIN—Leaders' Club; Basketball; Baseball; Senior Friendship Club; Health Club; Monitor Committee.

NORMA MORTUS—Honor Society; Leaders' Club (Sec.); Harvard-Yale; Army-Navy; Baseball; S Letter Girl; Sophomore Friendship Club; Senior Friendship Club; Monitor Committee.

WILLIAM MURRAY—Football; Hockey; Varsity S Club; Rifle Club; Hi-Y; Dramatic Club; History Club (V. Pres.); Monitor Committee.

JEAN ANN NAROVEC—Leaders' Club; Tarpon; A Cappella Choir; Senior Friendship Club; Dramatic Club; Whirl Club.

ELEANORE E. NEWMAN—Observer Business Staff; Sophomore Friendship Club; Senior Friendship Club; Health Club; Debate Club; Chess and Checker Club; Monitor Committee.

ANGELA NICOLosi—Life-saving; Sophomore Friendship Club; Senior Friendship Club; Art Club; French Club (Pres.); Health Club.

ALBERT NOSSE—German Club.

JAMES V. OLIVER—Band; Orchestra.

RUTH O'MALLEY—Observer Business Staff (Business Mgr., Circulation Mgr.); Volleyball; Riding Club; A Cappella Choir; Sophomore Friendship Club; Senior Friendship Club; Mid-Year; Dramatic Club; Health Club; Debate Club; National Forensic League (Pres.).

GEORGE ONIONS—Football; Rifle Team; Debate Club; Monitor Committee.

EILEEN O'RILEY—Observer Business Staff; Leaders' Club; Sophomore Friendship Club; Senior Friendship Club; Modern Dancing.

MARY CONSTANCE ORR—A Cappella Choir; Sophomore Friendship Club; Senior Friendship Club; Mid-Year; Dramatic Club; Health Club.

AUDREY M. OSMON—Leaders' Club; Yale-Harvard; Basketball; Baseball; Sophomore Friendship Club; Senior Friendship Club; Health Club.

DONNEL J. OTTE—Riding Club; Hi-Y; Dramatic Club; Sociology Club; History Club; Debate Club; Monitor Committee.

ALICE OWEN—Leaders' Club; Baseball; Girls' Glee Club (Sec.); Sophomore Friendship Club; Senior Friendship Club (H.R. Capt.); Sociology Club (Pres.); Philomathean Club; Health Club.

NAOMI LOIS OZAN—Senior Friendship Club; Health Club.

JEANNE PALMER—Athletic Council (Sec.); Baseball; Sophomore Friendship Club; Senior Friendship Club; Modern Dancing.

WENDELL PARK—Ring Group; Monitor Committee.

ELEANOR PARKER—Honor Society; Leaders' Club; Tarpon; Volleyball; Basketball; Aqua-Dux; Sophomore Friendship Club; Senior Friendship Club (H.R. Capt.); Mid-Year; Dramatic Club (Pres.); Monitor Committee.

CATHERINE M. PATERSON—Sophomore Friendship Club; Senior Friendship Club; Health Club.

CHARLES A. PATTON—Cross Country; Movie Crew (Asst. Chief).

MARION PEEK—A Cappella Choir; Sophomore Friendship Club; Senior Friendship Club; Dramatic Club; Sociology Club; Health Club.

BETTIE PERSING—Leaders' Club; Basketball; Sophomore Friendship Club (H.R. Capt.); Senior Friendship Club (H.R. Capt.); Sociology Club; Philomathean Club (V. Pres.); Health Club; Debate Club; Monitor Committee.





ROBERT PETERSON—Baseball, Track, Hi-Y, Photographic Club, Stamp Club; Monitor Committee.

JOHN R. PHILLIPS—Honor Society; Tennis; Varsity S Club; Rifle Club (Treas.); Rifle Team; Hi-Y; History Club (Sec.); Monitor Committee.

NANCY PICKENS—Sophomore Friendship Club; Senior Friendship Club; Sociology Club; Philomathean Club; Health Club (H.R. Capt.).



IRMA M. PILMER—Senior Friendship Club; Health Club.

NELSON J. POTTER

ELSIE PRETZLAV—Leaders' Club; Basketball; Sophomore Friendship Club; Senior Friendship Club; Health Club.



JEANNIE PRICE—Observer Editorial Staff; Leaders' Club; Tarpon; Volleyball; Basketball; Baseball; S Letter Girl; Life-saving; Sophomore Friendship Club; Senior Friendship Club; Dramatic Club; Whirl Club.

ROMEO M. PRIORESCHI—Monitor Committee.

ROBERT RANDALL—Football; Cross Country; Track; Varsity S Club; Photographic Club.



MARY JO REDDY—Leaders' Club; Volleyball; Basketball; Baseball; Senior Friendship Club; History Club; Health Club.

BETTY REDFIELD—A Cappella Choir; Sophomore Friendship Club; Senior Friendship Club.

GERALDINE REED—Senior Friendship Club; Health Club.



FRANK REILLY—Baseball (Mgr.); Riding Club; A Cappella Choir; Hi-Y; Dramatic Club; History Club; Debate Club (Pres.); H.R. Sec.; Monitor Committee.

JACK REYNOLDS—Basketball (Capt.); Reserve Basketball; Baseball; Varsity S Club; Hi-Y.

RICHARD CARL RICE—Swimming; Hi-Y; History Club; Monitor Committee.



HELEN RIGGS—Tarpon; Volleyball; Basketball; Baseball; S Letter Girl; Life-saving; Riding Club; A Cappella Choir; Sophomore Friendship Club; Senior Friendship Club.

JANE E. RIGOT—Basketball; Senior Friendship Club.

DOYLE ROBBINS—Hi-Y.



ARCHIE ROBERTSON—Cross Country; Track; Varsity S Club.

JOHN CHARLES ROCHFORD—Cross Country; Track; Monitor Committee.

DONALD E. RYKS—Band; Orchestra.

GLORIA A. SAMARTINI—Leaders' Club; Volleyball; Basketball; Baseball; S Letter Girl; Girls' Glee Club; Sophomore Friendship Club; Senior Friendship Club; Health Club; Monitor Committee.

WILLIAM SCAMINACE—Whirlo Club.

JOE A. SCHLEIMER—Baseball; Hockey; Varsity S Club; Band; Hi-Y.

EDWARD SCHWAB—Football; Track; Rifle Club.

FREDERICK A. SCHWALLER—Radio Club (Pres.).

DONALD R. SCOTT—Whirlo Club (Pres., V. Pres.); Monitor Committee.

ADELE EDYTHE SEID—Leaders' Club; Girls' Glee Club; A Cappella Choir; Sophomore Friendship Club; Senior Friendship Club; Sociology Club; Health Club (H.R. Capt.).

CHARLES WILLIAM SHOWALTER—Band; Orchestra; Hi-Y; Clef Club.

EDWARD LOUIS SINGER—Stage Craft.

ROBERT SISSON—Cross Country (Capt.); Track (Capt.); Tennis; Varsity S Club; Hi-Y; Photographic Club; Monitor Committee.

BARBARA SMITH—Sophomore Friendship Club; Senior Friendship Club; Philomatheian Club; Ring Group.

GERALD SMITH—Lightweight Football; Reserve Basketball; Baseball; Varsity S Club; Hi-Y.

IRVING SMITH—Football; Lightweight Football; Hockey; Varsity S Club.

JEAN E. SMITH—Swimming; Life-saving; Art Club.

JEANETTE SNYDER—Sophomore Friendship Club; Senior Friendship Club; Philomatheian Club; Ring Group.

LEONARD F. SOLT, JR.—Track, Hi-Y.

ROBERT SONDAY—Track; Hi-Y.

ETHEL SPATIG—Leaders' Club; Volleyball; Basketball; Aqua-Dux; Sophomore Friendship Club; Senior Friendship Club; History Club; Debate Club; Monitor Committee.

JOAN SQUIER—Student Council; Athletic Council; Volleyball; Basketball; Baseball; S Letter Girl; Girls' Glee Club; A Capella Choir; Sophomore Friendship Club; Senior Friendship Club; Dramatic Club; Monitor Committee.

JACK SQUIRES

PATRICIA STANDISH—Leaders' Club; Tarpon; Yale-Harvard; Army-Navy; Baseball; S Letter Girl; Sophomore Friendship Club; Senior Friendship Club; History Club; French Club; Health Club; Monitor Committee.





ANNE STEFAROV—Senior Friendship Club.

DORIS STEINBACH—Sophomore Friendship Club; Senior Friendship Club; Ring Group; Sociology Club; Philomathean Club.

ELDON J. STERN—Football; Hockey; Art Club.



GENEVIEVE STOCKTON—A Cappella Choir; Senior Friendship Club; Dramatic Club; Health Club; Monitor Committee.

BETTY STOKES—Leaders' Club; Tarpon; Volleyball; Basketball; Baseball; Life-saving; Aqua-Dux; Sophomore Friendship Club; Senior Friendship Club; Monitor Committee.

MARY LOUISE STUTE—Leaders' Club; Basketball; Baseball; Girls' Glee Club; Sophomore Friendship Club; Senior Friendship Club; Latin Club; Health Club.



TERRENCE SULLIVAN—Baseball.

WILLIAM R. SUTHERLAND—Swimming; Hockey; Varsity S Club; Hi-Y; Dramatic Club; History Club (Sec.); Latin Club; Monitor Committee.

KATHARINE SUTTER—Leaders' Club; Basketball; Sophomore Friendship Club; Senior Friendship Club; Ring Group; Sociology Club; History Club; Health Club; Monitor Committee.



CAROL E. SWANSON

EVELYN SWANSON—Sophomore Friendship Club; Senior Friendship Club; Sociology Club; History Club; Health Club; Debate Club; Monitor Committee.

OTIS DAVIS SWISHER—Lightweight Football; Cross Country; Track; A Cappella Choir; Hi-Y.



BETTE TABER—Band, Drum Major; Senior Friendship Club; Latin Club; Monitor Committee.

KATHLEEN TANSLEY—A Cappella Choir; Sophomore Friendship Club; Senior Friendship Club; Dramatic Club; Health Club.

MALCOLM TAYLOR—Football; Lightweight Football; Varsity S Club; Hi-Y; History Club; Monitor Committee.



DAVE THOMAS

EULALA ALICE THOMAS—Senior Friendship Club; Health Club.

RUTH THOMPSON—Leaders' Club; Yale-Harvard (Capt.); Army-Navy (Capt.); Baseball (Capt.); S Letter Girls; Sophomore Friendship Club; Senior Friendship Club; German Club; Latin Club; Health Club; Ring Group.

CHARLES L. TILLIE—Monitor Committee.



VIRGINIA TINGE—Leaders' Club; Tarpon (Pres., Sec.); Volleyball; Basketball; Baseball; S Letter Girl; Life-saving; Aqua-Dux; Sophomore Friendship Club; Senior Friendship Club; Monitor Committee.

MARY TITGEMEYER—Girls' Glee Club; Senior Friendship Club; Health Club.

FRANCES TODD—Girls' Glee Club; Senior Friendship Club; Sociology Club; Health Club.

HELEN TREAT—Sophomore Friendship Club; Senior Friendship Club; History Club; Health Club; Monitor Committee.

MILFORD UBERSTINE—Football; Cross Country; Track; Hi-Y; Monitor Committee.

HELMA USSNER—Sophomore Friendship Club; Senior Friendship Club; Dramatic Club; French Club (Sec.); Philomatheian Club (Treas.).

JOSEPH V. VERMILLION—Observer Business Staff; Football; Basketball (Mgr.); Varsity S Club; Hi-Y; Mid-Year; Debate Club; Monitor Committee.

CLYDE VOLL—Baseball; Varsity S Club; Hi-Y; Monitor Committee.

BOB J. WARD—Rifle Club.

WILLIAM WARMUTH—Baseball; Swimming; Whirl Club.

GEORGE WEAVER—Baseball; Hi-Y.

WILLIAM ROBE WEBSTER—Rifle Club; Photographic Club.

KEITH E. WEIGLE, JR.—Honor Society; Swimming; Varsity S Club; Hi-Y (Treas.); Monitor Committee.

VIRGINIA WENDT—Girls' Glee Club; A Cappella Choir; Sophomore Friendship Club (H.R. Capt.); Senior Friendship Club (H.R. Capt.); Health Club.

WILLIAM WESKE—Band; Hi-Y; Monitor Committee.

MILDRED WHITE—A Cappella Choir; Sophomore Friendship Club; Senior Friendship Club; German Club; Latin Club; Health Club; Debate Club.

OLIVER WHITE—Football; Lightweight Football; Basketball (Co-Capt.); Reserve Basketball; Varsity S Club (Sec.); Hi-Y; Monitor Committee.

RUSSEL WILKA

ELOISE WILLIAMS—Leaders' Club; Volleyball; Basketball; Sophomore Friendship Club; Senior Friendship Club; Monitor Committee.

HAROLD M. WILLIAMS

THEODORE WILLIAMS

NORINE WINES—Honor Society; Band; Orchestra; Girls' Glee Club; Senior Friendship Club; French Club; Latin Club; Clef Club; Monitor Committee.

BILLIE LOUISE WINGER—Volleyball; Basketball; Sophomore Friendship Club; Senior Friendship Club.





JAMES D. WORKMAN—Band; Orchestra.

ROBERT E. YOUNG—Track; Rifle Club; Stamp Club.

WILLIAM YOUNG—Football; Hi-Y.



ELVA ZINCK—Observer Editorial Staff; Aqua-Dux; Sophomore Friendship Club; Senior Friendship Club; Dramatic Club; Health Club.

GEORGE HECKMAN—Rifle Club; Automobile Club; Monitor Committee.

DAVE HUTTON—Football; Hockey; Hi-Y; History Club; Debate Club; Monitor Committee.



RALPH RHODES—Football; Rifle Club; German Club; Monitor Committee.

NOT PICTURED

HARRIET BASSET—Honor Society; Sophomore Friendship Club; Senior Friendship Club; French Club; Philomatheian Club.

LORRAINE BROWN—Senior Friendship Club.

WILLIAM DIXON—Swimming; Hi-Y.

MILTON L. HENDERSON

WILLIAM ALLEN MARKELL—Band; Boys' Glee Club; Debate Club.

BOB LEIBY—Rifle Club; Hi-Y; Movie Crew; Safety Patrol.

JACK LYTTLE

GENEVIEVE NORMILE

JACK W. PLAISTED

LA VERNE PROBECK

FRANCES RESS—Girls' Glee Club; A Cappella Choir.

MICHAEL TRIVISONNO

RUSS WILCOX

UNDER-CLASSMEN



HOMEROOM 17

Back Row: B. Stevenson, D. Sullivan, D. Sinclair, B. Reed, A. B. Rogers, H. Rosen, J. Olsen.

Fifth Row: S. Morgenstern, G. Ober, R. Lisse, G. Squires, F. Etheridge, J. Pander, P. Schmidt.

Fourth Row: J. Schell, J. Goodman, R. Mayette, M. Hershey, H. Thayer, G. Spence.

Third Row: M. Sutton, M. Park, J. Plumb, G. Kall, E. Gutelius, M. Rosenfeld, B. Bauknecht, M. Scattergood.

Second Row: L. Takacs, B. Reese, H. Nardy, M. Laro, C. Peak, J. Pfender, S. Roseman.

Front Row: H. Leyden, M. Ruolo, M. Miller, R. Robinson, E. Stratton, E. Pittaway, J. Rinear, W. Murray.

HOMEROOMS 303 & 308

Back Row: S. Miller, C. Burian, E. Jacobson.
Seventh Row: R. Verburg, R. Klinger, W. Harter, W. Hewitt, J. Lundblad, R. Landon, J. Woodworth, J. Nally, H. McKee.
Sixth Row: E. Schoof, W. Wachsman, T. Karpy, S. Woronkoff, A. Hoover, R. Kahn, W. Walter, T. Mahon.
Fifth Row: E. Usher, J. DeJovine, E. Francis, B. Fraser, S. Gordon, E. Klien, R. Shlicher, R. Balough, H. Frishkorn, F. Runser.
Fourth Row: I. Hirschkopf, J. Mayor, C. House, C. Griffiths, A. Woolmington, S. Wood, C. Schwentker, D. Whaley, A. Hamilton, A. Krieski.
Third Row: M. Brown, J. Williams, M. Todd, M. Heinle, J. Gross, B. Waterbury, M. Carpenter, B. Jensen, G. Zimet.
Second Row: L. Krahl, H. Weiss, M. Smolic, E. Kelsey, G. Winter, A. Yanson, P. Winsor.
Front Row: R. Lane, M. Gage, B. Gentile, E. Leiby, J. Goodman, J. Leone.



under-classmen

HOMEROOMS 16 & 217

Back Row: J. Bitonti, B. Clark, W. Wahlstrom, E. Wathen, R. Tath, F. Foster, J. Duff.

Fifth Row: W. Dunning, B. Armstrong, M. Bollinger, P. Bogigian, B. Lucha, E. Barker, M. Davies.

Fourth Row: G. Cretney, J. Fahnstock, W. Decker, F. Crookham, S. Corcoran.

Third Row: J. Bernier, G. Bullis, D. Croft, J. Boyle, J. Barch, B. Ashdown, A. Andrews, J. Vorpe.

Second Row: R. Hopke, B. Metka, C. Schall, L. Langdon, T. Finelli, B. Eifer, F. De Pledge, M. Perry.

Front Row: L. Drenske, A. Eggleston, E. Corcoran, E. Abazia, H. Bassett, G. Bleich, L. Blumenthal.

HOMEROOM 11

Back Row: B. Chenault, K. Bateman, G. Baker, W. Allen, W. Blide, J. Bayer, B. Cain.

Fifth Row: C. Ault, T. Brenner, R. Carlson, B. Boltz, E. Ackerman, E. Ahlman, R. Barletta, R. Brooks, L. Cleaveland.

Fourth Row: R. Albert, J. Carraher, B. Beck, B. Carson, P. Brugmann, P. Bogue, B. Bugbee, D. Calori, C. Brown.

Third Row: P. Aaroe, J. Bohland, L. Hegedus, R. Braunlich, M. Boehringer, H. Berk, J. Barney, J. Barrett, B. Berrigan.

Second Row: R. Clark, S. Clark, A. Buzzelli, J. Bum, L. Burmeister, B. Adamson, M. Andel, M. Biggins.

Front Row: W. Albrecht, J. Aquila, L. Brown, A. Bensing, A. Cavasini, I. Battaglia, J. Dilly.



HOMEROOM 19

Back Row: J. Forbes, A. Hansen, W. Hoose, F. Jones, D. Knaebel, J. Humphrey, D. Irwin, W. Hatch.

Fifth Row: T. Introcaso, J. Houle, J. Jeromson, G. Johnson, L. Grove, A. Wehrschmidt, E. Henry, D. Kaye, E. Jonke.

Fourth Row: M. Keckler, J. Jacoby, L. Jackson, L. Hejl, E. Jones, H. Gerrard, C. Hawkins, C. Hanus.

Third Row: P. Downs, B. Harmon, V. Hiltabiddle, R. Harris, I. Jurden, V. Hayes, A. Henderson, D. Gundel, M. Jahn.

Second Row: C. Huntsinger, S. Griffith, S. Hunter, N. Johnson, J. Grygo, R. Hollar, H. Heffner, P. Cole.

Front Row: M. Kanally, M. Gurman, J. Hahn, V. Kavanaugh, K. Hamilton, D. Hepker, J. Holloran.

HOMEROOMS 26 & 300

Left to right:

Back Row: W. Morrow, B. McFarlane, B. Mullally, G. Brandt, B. MacDonald, E. Kimbal, J. Steer, D. Sorenson, F. Rote, H. Singer, D. Sparks, B. Sprague.

Fourth Row: R. Mann, R. Scott, C. Brow, L. Morse, E. Mallers, G. Shilinskas, J. Smith, C. Snow, W. Moran, J. Mason.

Third Row: J. McCarthy, E. Skoog, M. Mason, B. Miller, M. Meeder, J. Shiffer, E. Skeel, B. Sherril, S. Mitchell.

Second Row: B. Smalley, K. Mooney, J. Stahl, P. Squier, J. Scott, S. Spreitzer, H. Sladek, L. Steer.

Front Row: J. Hoffman, G. M-Kee, M. Martinson, F. Motto, L. Mastrangelo, P. Seitz, R. Moore.



under-classmen



HOMEROOM 38

Back Row: R. Schroeder, J. Roberts, F. Schaffer, L. Schultz, N. Randall, D. Sacha.

Fifth Row: T. Pease, L. Stern, B. Nolan, R. Roden, S. Nassau, F. Musto, K. Reed, G. Newell, B. Powell, C. Ralston.

Fourth Row: A. Murphy, J. O'Connor, F. Rost, N. Schaefer, J. Norton, D. Piggott, C. Rupnow, M. Parr, L. Ranney, L. Ragle.

Third Row: E. Schaller, C. Rosene, C. Schiappacasse, B. Ruggles, R. Oetting, C. Pilmer, R. Phyfer, L. Qualman, E. Ross.

Second Row: J. Reynolds, M. Ress, B. Reedle, H. Reminger, E. Pocock, R. Owen, B. Reimholz, M. Knuckels, P. Mumper.

Front Row: B. Nightingale, V. Martin, V. Pickens, J. Nesbett, M. Parker, B. Rigot, M. Rigot, J. Norton.



HOMEROOM 21

Back Row: D. Diederich, R. Kilpatrick, G. Ernst, D. Dennis, J. Kerrigan, A. Llewellyn.

Fifth Row: A. Loleit, B. Knorr, H. Lang, B. Keenan, B. Lowry, B. Brown, J. Mace.

Fourth Row: J. Kempthorne, J. Liske, J. Lampert, C. Maitland, W. Larkin, E. Bearfield, R. Kouyoumjian, J. Lerch.

Third Row: E. Kovol, J. Cohen, K. Kerns, D. Lustic, A. Langer, M. Ink, M. Lenk, M. Litton.

Second Row: B. McGee, P. Loicano, E. La Pan, J. Ludwig, A. Kessler, B. Krische, J. Butler, E. Kennedy.

Front Row: J. Caddick, H. Finucan, M. Limes, J. Long, E. Le Bow, C. Knudson, E. Landgrebe.

HOMEROOM 304

Back Row: R. Wagner, C. Steverding, A. Taylor, D. Twinning, A. Suhart, C. Sua, M. Tholen, K. Treadwell.

Fourth Row: B. Tuckerman, B. Vangunten, J. Stroeter, R. Tipping, L. Weber, J. Widdowson, M. Tucker, J. Wilder, D. Thompson, D. Virgien.

Third Row: J. Stewart, C. Zimmerman, H. Weyandt, J. Conroy, H. Wyman, H. Studer, P. Young, P. Walsh, J. Williams.

Second Row: M. Stute, J. Welday, C. York, O. Trivisonno, A. Truppo, M. Trivisonno, L. Wissman, E. Wick.

Front Row: R. Stokes, M. Wilson, T. Wagner, P. Wikle, P. Van Horn, S. Stickle, H. Grotenrath.



HOMEROOM 18

Back Row: L. Goesling, T. Evans, J. Bowman.

Fifth Row: B. Corbeau, M. Fisher, H. Fortune, R. Daligny, R. Faye, G. Conrad, C. Taylor, L. Davis, C. Donato.

Fourth Row: R. Dows, J. Schneider, W. Schafer, H. Fisch, D. Green, G. Gould, H. Freed, F. Dowdell, M. Gower, L. Frizell.

Third Row: E. Danielson, R. Jacobs, J. Goller, E. Davis, V. Doubler, E. Faerber, J. Davis, B. Cooper, P. Comegys, J. Feltham.

Second Row: E. Fuller, M. Daley, P. Fisher, M. Damaso, M. Grono, I. Grady, D. Friel, J. Darvill.

Front Row: K. Evans, E. Goarich, R. Cu'p, V. Forsyth, R. Dornback, M. DeFrieze, B. Edwards, A. Gray.



under-classmen

HOMEROOM 207

Back Row: F. Pitchler, D. Peterson, M. Reichard, C. Prior.

Fifth Row: W. Oran, G. Lanese, B. Mather, B. McKenzie, P. Keyes, J. Lewis, R. Kretzer, D. Paul, B. McNeilly, B. MacDonald.

Fourth Row: D. Musgrave, B. Larbig, B. Knapp, C. Muntz, V. Preston, D. Minman, L. Liberator, R. Lais, S. Perrotti, E. Loeber.

Third Row: C. Tavener, E. Kerrigan, J. Corns, H. Noble, J. Morgan, S. Noll, M. O'Brien, B. Norder, B. Kopp.

Second Row: R. Molder, A. Leone, C. Pietrondi, N. Phillips, G. Stwan, V. Massa, B. Reese, C. Monck, R. Kormos.

Front Row: B. Martin, E. Quinn, Lucille May, Lillian May, E. Seabrandt, C. King, A. Noll.

HOMEROOM 305

Back Row: B. Williams, F. Reiss, G. Umstead, F. Steinbruegge, C. Tayerle, E. Sylvester, H. Simpson, B. Wallace.

Fourth Row: H. Starkoff, F. Tartaglia, R. Yedlick, R. Tews, G. Snook, B. Seitz, R. Stiebeling, R. Spots, N. Roby.

Third Row: A. Smart, B. Weiland, M. Siller, H. Rekittke, G. Smith, A. Thayer, V. Talcott, M. Solt, E. Verburg, F. Riegler.

Second Row: P. Yauch, L. Scharlau, H. Stockman, M. Smith, V. Schrock, N. Smith, E. Wallace, M. Rhyne.

Front Row: G. Spetrino, A. Vara, T. Skidmore, E. Thompson, D. She, D. Rouge.



HOMEROOM 107A

Back Row: D. Clark, J. Davidson, A. Clark, R. Auer, L. Clarke, J. Angel, W. Cook, R. Cunningham.

Fourth Row: D. Cirincione, R. Broadman, D. Deibel, T. Beman, R. Conover, R. Beeler, J. Cable, T. Angelone, F. Belgan.

Third Row: H. Chamis, A. Dick, E. DiCicco, H. Davidson, S. Britton, B. Bode, F. Allerton, P. Bussong, J. Beckman, N. Bendrick.

Second Row: B. Cowan, P. Damaso, P. Cavasini, R. Campbell, R. Braund, R. Berry, T. Alleman, C. Baginski, R. Clark.

Front Row: C. Consla, S. Brown, B. Ankeney, F. Barton, R. Byrum, A. Bogigian, J. Asher.

HOMEROOM 107B

Back Row: D. Evans, H. Forbush, J. Haas, R. Essell.

Fifth Row: M. Forkapa, R. Dunbar, F. Dockstetter, J. Johnson, J. Horton, W. Follett, C. Driggs, J. Graham, C. Kefer.

Fourth Row: T. Foster, F. Dixon, K. Keegler, R. Hunscher, C. Fix, J. Hart, K. Hennie, A. Jackson.

Third Row: C. Frisbee, L. Kellogg, N. Gaetano, A. Irvine, M. Hinske, I. Hinsdale, A. Bender, W. Foster.

Second Row: E. Haire, M. Greggor, E. Franchi, J. Harraman, E. Ennen, E. Francis, S. Heckelman, M. Driver.

Front Row: P. Efros, B. Hawkins, M. Jaffee, J. Kelly, E. Gaul, M. Kappen, B. Hamilton.



under-classmen



HOMEROOM 31A

Left to right:

Back Row: J. Kopp, B. Long, A. Koxlow, B. Manz, R. Labus, A. Louer, C. Jensen, B. Krause, B. Lantz.

Fourth Row: B. Jenkins, E. Kinsey, G. Longstreet, W. Lervin, W. Lesinsky, M. Jacobson, D. Izant, E. Irish, R. Kondrat, J. Kiminas, J. Kneale.

Third Row: G. Jewett, N. Lichty, M. Kallas, M. Kast, R. Lindenbaum, R. Kackeis, M. Kohler, J. Lemm, L. Litton, R. Jesse.

Second Row: D. Lennon, J. Jacobsen, M. Kays, A. Kester, S. Jones, J. Labbie, M. Lerch, B. King, L. Parson.

Front Row: J. Johnson, V. Kahne, T. Luci, H. Labbie, C. Klecka, E. Lind, E. Malbin, D. Lantz.

HOMEROOMS 31B & 32

Back Row: E. McHugh, H. Nielson, R. Morgan, G. Pierman, D. Nesbitt, B. Mulligan, A. McKinnon, B. Masters, B. McKay, B. McMillan.

Fourth Row: J. Moore, B. Nardy, N. Pearn, D. Perring, D. McGiffin, S. Marco, H. Mattern, W. McShane, E. Philpott, B. Pfeiffer.

Third Row: J. Noall, B. McDonnold, L. Meisel, L. Miller, L. Pearce, V. Mitchell, N. Morgan, H. Martin, B. Matson.

Second Row: J. McArthur, E. Miller, A. Pace, M. Moran, J. Meade, L. McClelland, N. Miggontz, M. Paul, R. Peacock, J. Newman, J. Momberger.

Front Row: D. Nightingale, M. Morrison, S. Patton, D. Pattie, R. Nixon, L. Pickens, R. Morris, L. Mattern.



HOMEROOM 28

Back Row: M. Emmanuel, D. Franzen, A. Carle, J. Fellows, D. Gairing.

Fourth Row: D. Disbro, G. Engstrom, G. Fisher, B. Fields, J. Gokorsch, D. Gardner, N. Gentile, D. Fitzpatrick.

Third Row: R. Erbor, P. Ford, A. Ferrante, E. Dresher, J. Frank, R. Disar, G. Fort, H. Finale.

Second Row: J. Douglas, B. Emig, M. Gardiner, A. Fratianna, E. Finnerty, E. Foster, A. Dolan.

Front Row: P. Dickinson, E. Dilley, R. Duncan, E. Byrne, L. Fisher, S. Byrne.



HOMEROOM 103

Back Row: E. Stinson, N. Schmidt, T. Whaley, E. Smeader, R. Stanford, E. Smith, J. Schwaller, G. Schenk, D. Spitzer.

Fourth Row: K. Rothaermel, D. Shaps, A. Russ, F. Stech, C. Spencer, W. Rose, R. Ross, W. Starrett.

Third Row: R. Story, C. Simpson, R. Stout, J. Steiger, G. Schnell, P. Ryan, C. Smith, M. Smith, V. Son.

Second Row: E. Reynolds, B. Smith, M. Samartini, E. Rothaermal, E. Schaefer, M. Steinbach, D. Sharr, G. Schmitz.

Front Row: B. Ross, D. Shontz, P. Smart, D. Smith, R. Romaine, J. Smith, S. Saltz.



under-classmen

HOMEROOM 20

Left to right:

Back Row: B. Brooker, O. Carlson, J. Allen, K. Birnbaum, H. Allison, V. Baldwin, B. Dunlea, B. Barr.

Fifth Row: J. Barey, B. Austin, W. Clough, S. Bloom, R. Blosser, N. Bossman, C. Bargar, B. Atkinson.

Fourth Row: B. Baughman, M. Calvin, R. Bond, R. Andonian, J. Christian, P. Barndt, M. Blide, P. Christy, I. Beranek.

Third Row: D. Berger, B. Barzen, R. Chapman, R. Augustine, H. Barletta, P. Andrews, N. Brown, G. Cameron.

Second Row: L. Blauman, E. Burris, A. Black, B. Brown, M. Butler, C. Cabat, R. Brady.

Front Row: B. Brownley, F. Averill, J. Ayers, D. Bruce, M. Brown, M. Barclay, M. Barry.



HOMEROOM 105

Back Row: J. Van Epp, G. Taylor, W. Williams, R. Walling, J. Weber, T. Welsh, J. Watt.

Fourth Row: J. Van Kirk, K. Zorge, R. Wolff, W. Thompson, B. VanPelt, H. Wensley.

Third Row: F. Winter, E. Timbers, F. Watkins, W. Waterbury, H. Thomas, C. Thacker, O. Thompson, P. Swank, J. Walker.

Second Row: R. Terwilliger, L. Young, J. Wirt, E. Urban, E. Turk, R. Zowasky, E. Young.

Front Row: E. Walker, M. Wilder, M. Thompson, F. Streator, H. Zorn.



HOMEROOM 30

Back Row: G. Harrell, E. Harlen, C. Gockel, R. Grubb, D. Gibbons, D. Hansen, W. Houston, G. Havens, D. Hoyt, H. Hoffman.

Fourth Row: M. Hart, E. Howell, P. Hay, C. Goller, E. Herrick, D. Gundel, M. Henderson, E. Anderson, W. Holl, D. Guthrie.

Third Row: E. Hirsh, I. Hart, P. Gerstenberger, C. Imboden, D. Hamilton, E. Hassell, E. Gilmore, L. Houston, C. Irwin.

Second Row: D. Goske, T. Graham, P. Hill, D. Herron, J. Heckman, R. Gettig, B. Guiler, M. Gottron.

Front Row: J. Hoffacker, F. Roth, P. Gompf, A. Hanlon, D. Goodwyn, G. Gurman.



HOMEROOMS 37 & 22

Back Row: J. Corio, D. Roads, I. Pajersky, F. Sibert, R. Rice, B. Prendergast, W. Powell, R. Danford.

Fifth Row: R. Collins, R. Denslow, F. Crane, R. Currell, B. Erlenbach, C. Regan, R. Pojak, J. Reid, P. Roberts, C. Coolidge.

Fourth Row: H. Crawford, D. Deinhart, C. Cullen, R. Cullen, J. Pulford, J. Davies, M. Davies, A. Racciardi, B. Davidson.

Third Row: T. Bitonti, B. Roderick, D. Roderick, B. Reed, M. Renshaw, C. Davis, A. Plumb, K. Rodin, B. Darner.

Second Row: L. Reiner, J. Bowers, H. Robertsen, V. Colville, J. Connell, V. Coburn, M. Cross, H. Riblet, P. Davis.

Front Row: M. Davies, P. Reimholz, B. Reynolds, A. Davidson, G. Croft, J. Polk, E. Corcoran.



under-classmen



HOMEROOMS 206 & 202

Back Row: P. Hannon, R. Karl, H. Marquette, C. Macha, M. McGee, M. McFerren, J. Kirchner, B. Kilpatrick, B. Hannon.

Fourth Row: F. Johnson, M. Leone, W. Marinelli, L. Fortenbaugh, G. Groce, L. Kay, W. Maloney, L. Meshenberg, B. Hine, O. Maloney, R. Levis.

Third Row: C. Kelly, A. Jones, J. Meyer, J. Hall, L. Hall, E. Griffith, M. Hornung, E. Greggor, M. Huff, M. Harvey, R. Keeler.

Second Row: B. Hayden, D. Grob, M. LaGatta, K. McGarry, L. Jackson, E. Giles, J. Hitchcock, F. Grossman.

First Row: M. Maulorica, LaVern Granger, P. Hewitt, LaViro Granger, J. McKenzie, M. Klassen, L. Mandaville.

HOMEROOMS 302 & 212

Back Row: J. Meagher, C. Parker, M. Newman, P. Payne, F. Jacobs, E. Fasimpaur, B. Moore, R. Loomis.

Third Row: E. Andrews, P. Peluso, R. Peters, F. Pflueger, E. Miller, J. Perotti, D. Neuhaus, N. DeJovine.

Second Row: B. Niece, E. Otello, R. Porter, M. Moody, R. Nicholson, J. Orr, A. Orr.

First Row: L. Powell, P. Morley, J. Miller, R. Morris, P. Nussel, G. Moore.



HOMEROOM 29

Back Row: A. Gaudio, Jr., R. Bill, D. Cole, H. Cope, W. Benawit, R. Biehl, R. Eichenberger, R. Curtis, T. Bednar.

Fourth Row: S. Collier, E. Chegwidan, R. Eicher, D. Cavano, J. Fiore, R. Cooley, B. Binder, J. Darroch, B. Bouffard.

Third Row: P. Bechtel, G. Carlson, N. Anglin, P. Cramer, Helen Dimsa, J. Fink, E. Clark, M. Burger.

Second Row: H. Galloway, Y. P. Bow, R. Beaumont, B. Armstrong, T. Blumenthal, B. Daniels, L. Candow, C. Babcock, R. Bonnallie.

First Row: S. Lynch, M. Cleaveland, B. J. Arnold, A. Cusumano, J. Berndsen, S. Auer.



HOMEROOM 309

Back Row: E. Wurster, R. Ralph, B. Stearns, R. Williams, H. Reichard, P. Zirke, B. Treister.

Fourth Row: F. Trevarthen, C. Ramm, P. Vara, M. Thomas, M. Spring, D. Winters, D. Wolf, J. Young, W. Silva.

Third Row: D. Wideman, J. Ward, B. Williams, M. Taylor, E. Winsor, M. Reed, E. Sua, L. Roth, M. Randell, H. Williams, B. Summers.

Second Row: D. Williams, A. Samuel, L. Tait, J. Spellan, J. Treter, A. Shulte, O. Ridgley, M. Tinge, F. Zeigler.

Front Row: C. Watson, J. Tillotson, A. Tanno, W. Sutter, H. Walter, R. Trivisonno.



▶▶▶ Major Sports ▶▶▶

There it goes



Bredenbetg carries the ball

Geiger downed by Lakewood



Fox—by an eyelash

Two of a kind, track stars



Overtime + Bisson = victory

And two points come home



Beautiful block





Shaw-East game

Teamwork

Black-Red, 'nuf-sed

Touchdown



"Army-Navy"

Shaw-72 Adams-29

Up and over



Flor gaining yardage

"The Crowd Roars"



Trevor Rees, Shaw's coach, who has led the Cardinals to 20 victories, 12 defeats, and 3 ties, came to East Cleveland in 1936 after an All-American football career at Ohio State.

Bill Haker, quarterback, was the 131-pound senior who ran for a touchdown in the last two minutes of the Shaker game and showed plenty of speed in the backfield this season.



Harry Bredenberg, halfback, was the 142-pound senior backfield man who displayed a star running and blocking ability.

Ollie White, guard, was the 158-pound gridman who injured his ankle but when recovered, played some outstanding football.



Al Flor, halfback, was the player who was usually called upon to make that extra inch for a first down, but fans will always remember his 80-yard touchdown run in the Lorain game.

Dick Palmer, fullback, was the triple-threat captain of the Shaw eleven who was recognized as one of the best passers in the city.



Joe Vermillion, tackle, was a capable substitute who showed up especially well in the Lakewood game.

Quinty Ciolfi, center, was the 140-pound lineman who ably alternated with Bob Krause at the all-important line position.



Bob Evans, guard, was a steady, consistent player whose outstanding game was in the Lorain contest.

Marion Dietrich, tackle, was the rugged, aggressive player who knocked a Red Raider unconscious with a powerful block in the Shaker game.

Marty Loftus, the assistant coach who helped "Trev" produce the best team since the Cardinals went undefeated in 1926, came from Baldwin-Wallace.

Kent Geiger, end, was the versatile, aggressive lineman who received All-Scholastic honors at center and end in his junior and senior years.

Bob Custer, end, was the 150-pound substitute who recovered the touchdown fumble in the Heights game.

Bob Lucas, guard, was the tough, alert gridman who recovered the fumble in the Lorain game that set the Shaw powerhouse rolling.

Jerry Gould, guard, was the 147-pound bundle of dynamite who made a specialty of breaking through the enemy wall to nail a runner.

Jim Duff, quarterback, was the clever junior who proved that the Cardinals need not worry about a field general for next year's conflicts.

Allen Hansen, tackle, was the 165-pound junior linesman who served as an able and willing replacement for an important position.

Don Sinclair, halfback, was a 165-pound junior who has been on the squad for two years.

Howard Rosen, tackle, was the 190-pound junior who has given two years of brilliant varsity service and still has another to come.

Harold Frischkorn, halfback, was the galloping backfield man injured early in the season.





Wes Stevens, a 1937 Shaw graduate who gave freely of his time to develop this year's team, was very effective in working with the reserves.

Bill Keenan, halfback, was the fast, shifty junior who specialized in running for touchdowns on first plays: (i.e. Shaker and Collinwood).



Chuck Sua, end, was the receiver of that 55-yard pass in the Lorain game and a player who excelled in the kick-off department as well.

Jack Olsen, tackle, was the 204-pound junior lineman who showed up well on the defense.



Bob Reed, fullback, was the 140-pound player who acted as substitute for this important backfield position.

A .B. Rogers, guard, was the large, capable blocker who was rushed to the hospital for an appendicitis operation two days after playing in the Heights game.



Ted Needels, end, was a senior who has been on the squad since his sophomore year.

Archie Taylor, quarterback, was the substitute who took over Duff's position in the East Tech game and displayed his ability to handle this key position.



Bob Krause, center, was the sophomore who played a hard, well-fought season in his first year at Shaw.

Bob Lowry, end, a 150-pounder who should see plenty of active service next fall.

football



Back Row: S. Reese, L. Grove, C. Driggs, R. Ross, T. Mann, C. Hawkins, B. Boltz, O. Carlson, N. Gentile, E. Irish. **Fifth Row:** F. Bricker, Mgr., E. Hirsh, J. Hart, H. Lang, R. Ross, D. Gibbons, J. Reid, C. Coolidge, G. Taylor, B. Austin, F. Riegler, J. Fox. **Fourth Row:** B. Murray, Mgr., A. McKinnon, J. DeJovine, D. Hanson, R. Custer, J. Graham, R. Reid, Q. Ciolfi, C. Regan, R. Pojak, T. Needels, B. Knapp, G. Umstead. **Third Row:** J. Englehorn, Mgr., Wes Stevens, Trainer, A. Flor, B. Keenan, J. Vermillion, F. Marshall, B. Young, D. Diederich, R. Rhodes, V. Miller, D. Clark, B. Lowry, M. Taylor. **Second Row:** Asst. Coach Loftus, J. Duff, J. Gould, H. Frischkorn, B. Krause, D. Sinclair, J. Olsen, B. Haker, A. Hanson, A. Taylor, C. Sua, Coach Rees. **Front Row:** H. Bredenberg, B. Evans, B. Lucas, A. B. Rogers, D. Palmer, K. Geiger, O. White, H. Rosen, M. Dietrich.

JOHN ENGLEHORN } Managers
 FRED BRICKER }
 DICK PALMER Captain
 MR. TREVOR REES Coach
 MR. MARTIN LOFTUS Ass't Coach

A MASSING a total of 183 points to their opponents' 75, the Shaw Cardinals stormed through a highly successful 1939 season. Shaw won six games, tied two, and lost one; not losing to any non-Lake Erie League opponent. It was Coach Trevor Rees' best year since he came to Shaw; the first time he has beaten Elyria.

The Shaw-Lorain game was acclaimed by all who saw it as the best-played, best-fought game of the year in the Lake Erie League. Shaw's flashy offense clicked well throughout the season, and Trev Rees was especially pleased by the team's spirit.

High-point man was Al Flor, 180-pound halfback, who scored 52 points; Harry Bredenberg made 26 points, and Dick Palmer, 18. Dick Palmer was chosen all-scholastic fullback on both the *Cleveland News* and the *Cleveland Press* teams.

SHATTERING two records, the crack Shaw Cardinals spurred on to their third Lake Erie League Championship and permanent possession of the Basketball Trophy.

With a sparkling attack and an impenetrable defense, the highest-scoring quintet in Shaw's history sank 739 points in 16 games. Winning most of the games by top-heavy scores, the Wisemen avenged the only 1939 football defeat by crushing Lakewood in a stinging 70-36 defeat. In the same Lakewood game, Ollie White, sharp-shooting left-forward, netted 24 points to break the school individual scoring record.

The 1939-40 team was Coach Roy Wisecup's sixth championship team in eleven years. Inspired by the varsity team, the Shaw Reserves captured twelve victories in sixteen games.

JOE VERMILLION } Managers
 ARTHUR DOYLE }
 MR. ROY WISECUP Coach

Back Row: B. Knapp, A. Russ, R. Mulligan, B. Dunlea, R. Essell, R. Clark, J. Watt, R. Pojak. **Third Row:** J. Vermillion, B. Thomsen, C. Keefer, J. Weber, A. Suhart, A. Doyle, Coach Wisecup. **Second Row:** B. Bisson, L. Visci, O. White, J. Reynolds, R. Palmer, J. Barry. **Front Row:** D. Bales, L. Maher, C. Sua, R. Custer, R. Gleason.



basketball

SUA

CUSTER

BARRY

MAHER

PALMER



VISCI

BISSON

GLEASON

WHITE

REYNOLDS

Chuck Sua, guard, was the high-scoring player who accumulated 16 points in the Elyria game with mostly mid-floor shots and was a fine defensive player.

Bob Custer, center, who sustained an injury in the early part of the season, recovered soon enough to play his best game at University.

Jack Barry, guard, was the athlete who concluded three years of basketball for the Cardinals with an outstanding game at Heights.

Len Maher, forward, was the substitute who also starred in the Heights game and should prove a valuable player next year.

Dick Palmer, forward, was the first semester captain whose exceptionally fine passing as well as his outstanding performance in the Heights game, will long be remembered.

Len Visci, guard, was the alert and steady player who made up for his lack of height in aggressiveness and speed.

Bill Bisson, forward, was the colorful bas-keteer who filled Palmer's shoes at mid-year and was responsible for the sudden-death victory over University.

Dick Gleason, guard, was the square-jawed defense-man who sank the tying foul shot in the Lakewood game.

Ollie White, forward, was the tricky shooter whose 24 points in the Lakewood game set a new individual high scoring record.

Jack "Snake" Reynolds, center, was the hard-fighting, high-scoring center who scored two points in the last few seconds of play in the Lakewood game giving the Cardinals a 29-27 victory.

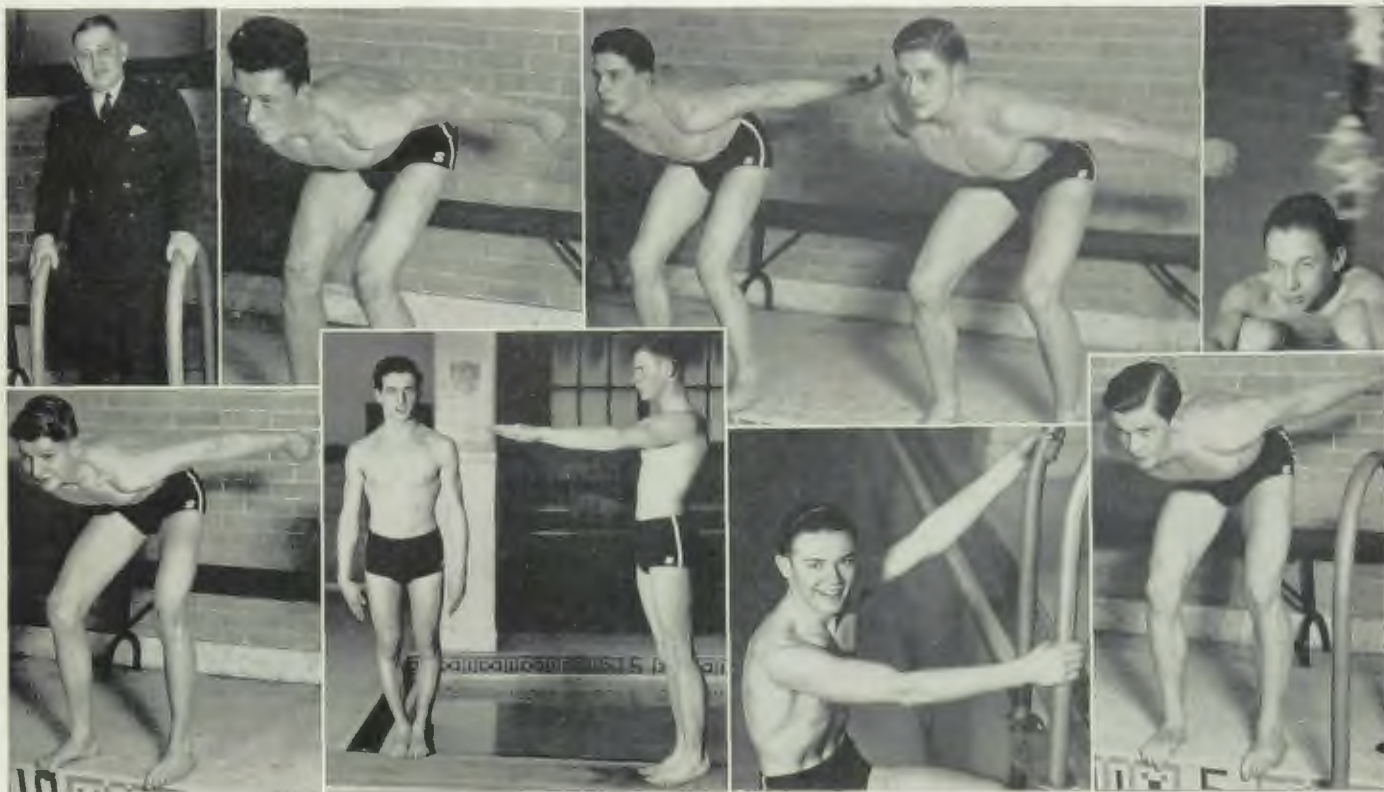
VIVIAN

CLARK

LOFTUS

BRYANT

GREEN



PEW

COHN

WALKER

TWINING

WEIGLE

"Doc" Vivian, coach, is the one who is largely responsible for making Shaw a terminal city on the swimming map.

Pat Clark, 220 free styler, was the sophomore natator who should star next year even more than he did this one.

Bob Loftus, breast stroker, displaying outstanding ability throughout the season, was the only Shaw man who won a first in the Lake Erie meet.

Jim Bryant, back stroker, was the three-letter man who was influential in bringing success to the Shaw medley team.

Don Green, back stroker, was the short but snappy swimmer who should prove to be a star in his senior year.

Dick Pew, 100-yard free styler, was the swimming mate of Twining who usually "copped" those extra needed points.

Louis Cohn, diver, was the low-board artist who also did his part which enabled Shaw to win five straight meets.

Bob Walker, diver, was the Senior A who more than once had the highest honors after displaying top diving form.

Don Twining, 220 and 100 free styler, was the reliable tankman who began in his sophomore year and is rapidly swimming to the top.

Keith Weigle, 40 free styler, was the natator who swam the 40 in a constant 20 and also starred on the medley.

AFTER displaying unexcelled swimming performance, the Shaw natators splashed their way through a successful season and then went on to both district and state meets.

The Shaw tankmen, composing one of the finest teams that Doc Vivian has turned out, swam to five straight victories.

High point man was free-styler Don Twining who captured 73 points. Runner-up was Keith Weigle with 59½ points.

Shaw brought home both medley and breast-stroke "bacon" from the Lake Erie League meet, and also 50-yard free-style honors from the District meet. The medley team of Bryant, Loftus, and Weigle proceeded to swim a third place at state finals. Shaw finished sixth at Columbus.

BOB TUCKERMAN Manager
 MR. DOUGLAS VIVIAN Coach

Back Row: B. Atkinson, D. Brooks, A. Wildern, D. Sorenson, J. Humphry, B. McCarthy, B. Beck, W. Warmuth. **Third Row:** Coach Vivian, W. Ashdown, W. Wallace, C. Wallach, T. Meyer, D. Nesbitt, B. Price, B. Tuckerman. **Second Row:** D. Green, L. Cohn, B. Walker, P. Clark, D. Rice, J. McArthur. **Front Row:** D. Pew, B. Keenan, K. Weigle, B. Loftus, J. Bryant, D. Twining.



swimming



baseball

Back Row: Coach Wisecup, F. Reilly, C. Sua, B. Harris, G. Miller, L. Visci, G. Hunter.
Second Row: E. Belgan, C. Voll, A. Hansen, J. Clarke, J. Schleimer, J. Reynolds, J. Gugliemotto. **Front Row:** G. La Mour, A. Biello, A. Suhart, B. Longmuir, T. Sullivan.

GEORGE HUNTER Manager
 MR. ROY WISECUP Coach

SHAW'S baseball team for the 1939 season was not as successful as the teams of the past few years. They completed the season with five victories and six defeats.

The team played all of its home games at Rozelle Field due to the fact that lighting for night ball was being installed at Shaw stadium.

Schleimer led the regular players in batting, completing the season with an average of .303. Sua batted in the most runs with nine to his credit for the season.

The Cardinals finished the season with a team batting average of .224 and a fielding average of .929. The low batting average may account for the fact that Shaw did not win more games.

Roy Wisecup, coach, was the man behind the performances of the baseball team as well as the championship basketball five.

Jack Clark, outfielder, was the general utility man who displayed unusual batting power.

Clyde Voll, relief pitcher, was the moundman who exhibited some fine talent and should prove successful as the first-string pitcher.

Len Visci, third baseman, was the sophomore who also proved a star at the plate.

Joe Schleimer, catcher, was a first-string player who was both durable and also a good hitter.

Bob Harris, ace pitcher, was a three-letter man who besides being an outstanding pitcher, excelled at bat and outfield.

Jack Reynolds, first baseman, was the player whose outstanding characteristic was team-play.

Glen Hansen, second baseman, was the infielder whose fiery line of chatter could be heard all over the field.

Chuck Sua, outfielder, was the sophomore player who displayed outstanding ability in colorful as well as speedy base running.

Francis Belgan, outfielder, was the player who made the team as soon as he came from Kirk.





Class President and forward

Promising "prom"



Miss Wood (ing)

Just dyeing

Red Cross Berry Jr.



Harter and his roundtable



Screwballs Consolidated

a shuttle

snap page

▲▲▲ Minor Sports ▲▲▲

CROSS country



Back Row: T. Whaley, E. Gutelius, M. Uberstine, R. Scott, B. Sisson, D. Nesbitt, R. Carlson, B. Bugbee, A. Andrews, E. Sylvester, B. Eifer. **Second Row:** E. C. Offinger, D. Sacha, F. Langer, D. Croft, F. Dowdell, F. Kappen, B. Knorr, O. Swisher, D. Sparks. **Front Row:** F. Jones, R. Essell, E. Francis, A. Robertson, E. Merriman, B. Randall, W. Oran.

ED FRANCIS Manager
MR. E. C. OFFINGER Coach

BESET by an ever-present jinx, injuries, the Shaw cross-country team, none the less daunted, bettered its 1938 record. In its three dual meets, the cross-country team triumphed twice, bowing only to Lakewood. For the ninth consecutive year, Shaw defeated Collinwood, 25-30.

In cross-country meets the team with the lowest score is the victor.

Most of the men will return next year, and they should prove a hard team to conquer.

Ernest Merriman set a hot pace throughout the season, finishing first in three out of four meets, and placing twenty-third in the state meet at Ohio Wesleyan.



tennis

Back Row: E. C. Offinger, C. Dennis, C. Morgenstern, A. Drexel, F. Etheridge, L. Sosna, F. Tyler. **Front Row:** R. Denslow, B. Knapp, H. Thayer, J. Phillips, M. Dietrich.

MR. E. C. OFFINGER Coach

NUMBER thirteen cast no spell on the 1939 Shaw tennis team. Even though the past season marked the thirteenth year the Cardinals have been represented on the tennis courts, the boys completed one of the most successful seasons in recent years.

With only one letterman, Carl Morgenstern, returning from last year's squad, Coach E. C. Offinger produced a team that defeated Elyria 3-2, and Shaker 4-1. Heights and Lakewood each defeated the locals 4-1, while Lorain pushed over a 5-0 setback. These scores do not indicate the hard drawn-out contests that usually occurred before the Cardinals were subdued.

There is a possibility that the team will enter the Greater Cleveland League this spring. A doubles team of Dietrich and Morgenstern will also enter the district tournament.

ENTERING the third year of competition in the school hockey league, Shaw expected a fairly successful campaign. But for various reasons the team made a poor showing, and finished seventh in the eight-team league by winning one, losing five, and tying one.

Some of the contributing factors for the team's failure to perform better were: a lack of good material, an extremely tough schedule, and a scarcity of practice sessions.

Although there was a general lack of interest among the students for the sport, the spirit of the squad itself was high. The leading scorers were Chuck Regan and Don Sinclair. Next year's outlook is brighter however, as there are on the squad many talented young members, who need only experience to become skilled players.

RAY ALBERT } Managers
 BOB KNORR }
 MR. WILLIAM WALTON Coach

Back Row: G. Ross, R. Augustine, J. Schleimer, C. Regan, T. Evans, E. G. Abbott.
Second Row: D. Sinclair, J. Houle, L. Sosna, B. Murray, B. Knorr. **Front Row:** H. Thayer, B. Kenworthy, T. Pease, J. Goodwyn, B. Sutherland.



hockey

WITH only five lettermen returning, Shaw's track team got off to a good start at the First Annual Arena Relays. The half-mile relay team, consisting of Ray and Ralph Fox, Frank Dowdell, and Bill Haker, took first place.

Despite the bad luck of injuries, Shaw's inevitable jinx, this team competed successfully throughout the track season. Led by co-captains Ray and Ralph Fox, Shaw defeated Heights and Shaker, both first-class teams. A strong, record-setting Western Reserve Academy team handed Shaw its only dual-meet setback.

In the important Lake Erie League Meet, a very close contest, Shaw took fifth place, seven points behind the winner, Lakewood. The Fox twins finished their three years of track competition at Shaw with highly creditable records.

ALVIN GOLDWYN	} Managers
BURTON EIFER		
RAY FOX	} Co-captains
RALPH FOX		
MR. E. C. OFFINGER	Coach
MR. W. V. NICK	Ass't Coach

Back Row: B. Lucas, D. Charlotte, J. Rockford, O. Swisher, B. Sprague, B. Randall, R. Carlson, D. Evans, Mr. Nick. **Third Row:** E. C. Offinger, E. Francis, B. Sisson, B. Kenworthy, B. Barletta, D. Huber, K. Geiger, B. Catlin, A. Foote, T. Mann, E. Gutelius, B. Evans, E. Merriman. **Second Row:** A. Goldwyn, W. Oran, W. Larkin, G. Peers, F. Dowdell, H. Frischkorn, A. Robertson, D. McMillen, B. Hagan, H. Lang. **Front Row:** L. Takacs, B. Griffin, A. Barnes, F. Kappen, Ray Fox, Ralph Fox, R. Stern, G. Faerber, B. Eifer.



track

THE Varsity S Club, organized in the spring of 1939, has an impressive list of accomplishments to its credit. Created to stimulate interest in athletics within the school, and also to draw the various athletic teams together, the Varsity S Club has striven toward these ends by conducting sports rallies and athletic button sales. It also directed the election of a football queen and held dances.

Two outstanding members of the Varsity S Club, Kent Geiger and Dick Palmer, during the football season, drew up a football pledge. This pledge, signed by members of the 1940 football squad, bound them to strict, self-imposed training rules.

This past year the club, composed of about seventy-five boys, was under the sponsorship of Trevor Rees, football coach. Membership is limited to holders of varsity letters in football, basketball, baseball, hockey, swimming, track, cross-country, and tennis.

First Semester	Second Semester
KENT GEIGER.....President.....	BILL HAKER
DICK PALMER..... Vice President.....	BILL KEENAN
HARRY BREDBERG.....Secretary.....	BOB CUSTER
BILL HAKER.....Treasurer.....	FRANK DOWDELL
MR. TREVOR REES.....Adviser.....	MR. TREVOR REES

Back Row: G. Peers, I. Smith, B. Bisson, W. Sutherland, K. Weigle, R. Catlin, H. Lang, B. Randall, B. Knorr, W. Murray, E. Francis. **Third Row:** M. Taylor, E. Gutelius, D. Croft, C. Morgenstern, B. Custer, A. Foote, F. Kappen, E. Merriman, G. Smith, J. Fiske, D. Bales. **Second Row:** C. Sua, D. Palmer, H. Bredenberg, K. Geiger, B. Haker, F. Dowdell, W. Larkin. **Front Row:** B. Kenworthy, B. Eifer, B. Knapp, R. Walker, J. Phillips, J. Duff.

**varsity
S club**





athletic council

First Semester	Second Semester
JEAN LOOMIS.....	President.....MARY COBURN
ELOISE ANDERSON....	Secretary-Treasurer.....JEAN PALMER
MISS CLARA WOOD... ..	Adviser.....MISS CLARA WOOD

ACTIVITIES of the Athletic Council varied this year as usual. Under the guidance of Miss Alice Juringus and Miss Clara Wood, the fourteen girls took complete charge of all girls' after-school sports.

The council's social events began with a hamburg roast at Highland Park last fall. The girls later joined the Leaders' Club in giving a tea for the mothers of members of both clubs. They also enjoyed three parties: one at Christmas time, another at Washington's Birthday, and the last one, a spring party.

Previous to the opening of the basketball season, the Athletic Council members sold pencils bearing the complete basketball schedule. They also instituted another kind of sale by twice offering caramel apples.

leaders' club

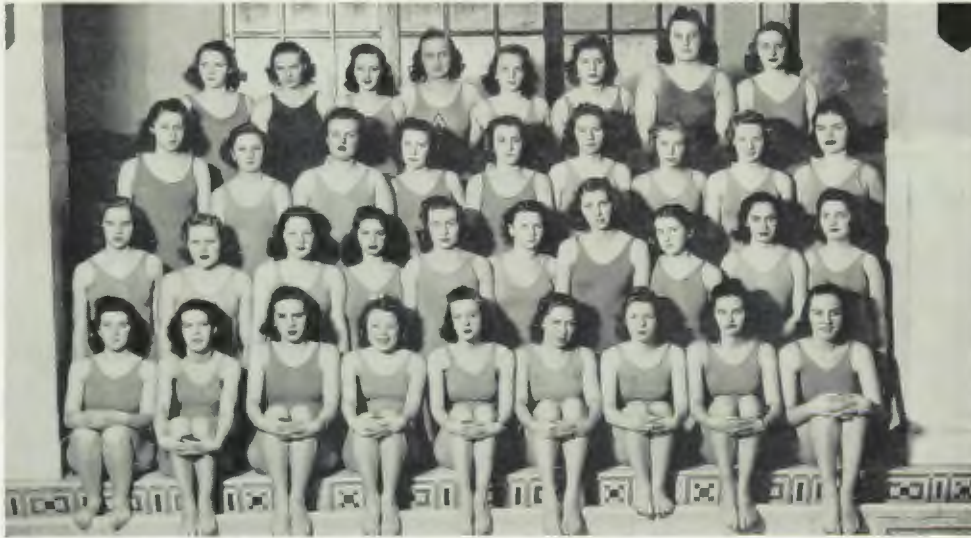


Back Row: L. Drenke, M. Akers, V. Marzi. **Front Row:** J. Christian, K. Hamilton, P. Van Horn, A. Buzzelli.

First Semester	Second Semester	
KAY HAMILTON.....	President.....	KAY HAMILTON
PEGGY VAN HORN.....	Vice President.....	PEGGY VAN HORN
NORMA MORTUS.....	Secretary.....	NORMA MORTUS
ALICE BUZZELLI.....	Treasurer.....	JOAN CHRISTIAN
MISS ALICE JURINGUS	} ... Advisers... {	MISS ALICE JURINGUS
MISS CLARA WOOD		

GIRLS who show outstanding athletic ability and who are sincerely interested in the work are chosen by their gym teachers to be leaders. These girls assist the gym instructors by checking the attendance, taking charge of the various squads, and, when the occasion demands, conducting the entire class for the teacher. This year they led the classes in routine gym exercises and in various other ways helped more than in former years.

This year the leaders have added fun to their work by bowling and by having a splash party. With the help of Athletic Council members, the girls entertained their mothers at a tea. The season's activities were brought to a close with a spring picnic.



life-saving corps

Back Row: E. Landgrebe, D. Fox, J. Fox, J. Loomis, W. Sutter, J. Stahl, J. Williams, M. Fisher. **Third Row:** P. Aaroe, V. Schrock, M. Keckler, J. Burnson, E. Sua, E. Winsor, M. Tinge, P. Reimholz, B. Magee. **Second Row:** K. Lowry, M. J. DeFrieze, K. Mooney, A. Eggleston, J. Price, J. Connell, B. Barr, V. Colville, P. Squier, P. Comegys. **Front Row:** F. Barton, O. Ridgley, A. Irvine, M. Akers, A. Batt, J. Thompson, C. Irwin, P. Walsh, D. Sullivan.

KATHARINE LOWRY Student Adviser
MISS ALICE JURINGUS Adviser

OUTSTANDING among Shaw's varied swimming activities is the girls' Life-Saving group. Thirty girls this year qualified for life-saving and strove to pass their junior and senior tests.

Instructions were given by Miss Alice Juringus, aided by several student leaders, on artificial respiration, first aid, and the procedure in saving drowning persons. In connection with the latter the methods of approach and the different ways of carrying were taught. A textbook on life-saving was utilized to aid in the course of instruction.

At the end of the semester a qualified instructor from the YWCA supervised the life-saving tests. A life-saving pin or emblem is given to those girls passing the required examinations.

THE Aqua-Dux are twenty-two girls who devote extra time each week as leaders in swimming. This year an unusual demand for swimming leaders has been made by the girls eager to learn to swim.

The annual splash party given by the Aqua-Dux for the boys' swimming team was held in March. Swimming in the pool was followed by a supper as a conclusion to this event, which was inaugurated last year.

During Christmas vacation these girls held a splash party followed by a potluck luncheon. They were also entertained by the Leaders' Club of the W. H. Kirk Junior High School.

MISS ALICE JURINGUS Adviser

First Semester

Back Row: P. Wikle, M. Lynch, S. Corcoran, D. Sullivan, B. Spare, J. Fox, E. Wallace.
Second Row: B. Stokes, P. Bremner, M. DeFrieze, B. Corbeau, P. Winsor, J. Stahl, J. Rinear. **First Row:** V. Tinge, P. Walsh, K. Lowry, E. Buckhalt, D. Fox, M. Fisher, A. Irvine, E. Landgrebe.



aqua-
dux

Roster

Name	Class	No. of semesters a leader	Name	Class	No. of semesters a leader
Annette Deibel	Jan. '40	1	Audrey Yanson	Jan. '41	2
Mary Lynch	Jan. '40	4	Betty Corbeau	June '41	2
Betty Spare	Jan. '40	3	Jane De Frieze	June '41	1
Betty Stokes	June '40	3	Mary Fisher	June '41	1
Betty Bushey	June '40	1	Elaine Landgrebe	June '41	2
Ethel Spatig	June '40	1	June Stahl	June '41	2
Eleanor Parker	June '40	1	Peggy Walsh	June '41	1
Peggy Bremmer	June '40	2	Pauline Wikle	June '41	1
Connie Brown	June '40	1	Janet Barrett	June '41	1
Edith Buckhalt	June '40	3	Elaine Danielson	June '41	1
Kay Lowry	June '40	5	Janice Darville	June '41	1
Mary Coburn	June '40	1	Jean Long	June '41	1
Elva Zinck	June '40	2	Lucille Steer	June '41	1
Jeanne Fox	June '40	3	Janet Hahn	June '41	1
Doris Fox	June '40	3	Betty Cooper	June '41	1
Virginia Tinge	June '40	4	Jane Forbes	June '41	1
Edith Leiby	Jan. '41	1	Wilma Murray	June '41	1
Evelyn Stratton	Jan. '41	1	Betty Hamilton	Jan. '42	2
Jean Rinear	Jan. '41	2	Charlotte Monck	Jan. '42	1
Dorothy Sullivan	Jan. '41	1	Evelyn Wallace	Jan. '42	2
Peggy Winsor	Jan. '41	2	Mary Ellen O'Brien	Jan. '42	1
			Roberta Byrum	Jan. '42	1
			Alice Irvine	Jan. '42	1

Second Semester

Back Row: L. Steer, J. Barrett, B. Hamilton, E. Stratton, M. L. Coburn, K. Lowry, B. Cooper, E. Parker, E. Buckhalt, E. Danielson, J. Forbes, E. Wallace. **Second Row:** J. Stahl, W. Murray, C. Monck, J. Hahn, B. Bushey, V. Tinge, E. Landgrebe, M. E. O'Brien. **Front Row:** E. Leiby, B. Stokes, P. Bremner, C. Brown, J. Fox, J. Darvill, J. Long, R. Byrum.



aqua-
dux

basketball



Back Row: R. Byrum, P. Reimholz, F. Allerton, H. Riggs, J. Loomis, R. Thompson, B. Reynolds, K. Hamilton, A. Buzzelli, M. Parr, S. Spreitzer. **Front Row:** R. Cisar, P. Christie, N. Bailey, P. Woodrich.

JEAN LOOMIS Student Adviser
KAY HAMILTON Ass't Student Adviser
MISS CLARA WOOD Adviser

EVERY Tuesday and Thursday afternoon during the season, girls gather in the gym to play that ever-popular sport, basketball. Sophomore, junior, and senior teams compete first in an inter-class tournament. The captain of each team must hand in a list of players preceding the contest or forfeit the game.

The championship team of the sophomores plays the leading junior team, and the winner of that contest competes with the top senior team. Victory in this fray decides the championship. This year the seniors overpowered the lower classmen.

On March 19th the annual Army-Navy tilt was held in the boy's gym. The captain of Army was Ruth Thompson; the captain of Navy, Jean Loomis. After an exciting battle the Navy emerged victorious. The final score, 33-30.



Left to Right: M. Akers, J. Keefer, V. Tinge, J. Barrett, B. Hamilton, P. Comegys, E. Landgrebe, B. Corbeau.

tarpon club

VIRGINIA TINGE	President
MARTHA AKERS	Vice President
ELAINE LANDGREBE	Secretary
BETTY CORBEAU	Treasurer
MISS ALICE JURINGUS	Adviser

MEMBERS of the Tarpon Club, who must be able to swim ten lengths of the pool and perform four different strokes, have completed another active and successful year. In November they enjoyed a potluck supper. Later the same month, they equally enjoyed giving a Thanksgiving basket to one of the city's needy families.

Girls from the Lakewood swimming club were entertained at a splash party and dinner in early December. Twenty Shaw girls were invited to a swimming party given by the Shaker Heights Shark Club on February 21. A spaghetti dinner followed the dip and relay races.

The girls' inter-class swimming meet in January was sponsored by the Tarpon Club with Virginia Tinge in charge. The seniors won the meet; the juniors edged out the sophomores to take second place.

OPENING the girls' sports, the volleyball season started the first week in October. This year twelve teams were in action.

At the close of the season, just before Thanksgiving, two important events took place: the inter-class tournament and the Yale-Harvard game. In the former, the leading junior team played the leading sophomore team and the victor played the senior team. This year, the juniors were victorious in the first contest, but were defeated by the seniors in the final struggle.

Having been first started in 1931, the Yale-Harvard game has become an annual event. The teams are composed of the top-ranking players of the school. Harvard achieved the victory in this year's contest.

Volleyball earns the player seventy-five points towards an "S" pin or letter.

ELOISE ANDERSON Student Adviser
VIRGINIA KAVANAUGH Ass't Student Adviser
MISS CLARA WOOD Adviser

Back Row: N. Arbaugh, D. Fox, K. Hamilton, J. Loomis, S. Spreitzer, J. Reynolds, B. Barr. **Front Row:** R. Thompson, J. Aquila, D. Story, V. Coburn, P. Reimholz, A. Thayer.

volley
ball



▲▲▲ Inter-School Activities ▲▲▲

Just kids

"An' he said—"



"Major Carver"

Loftus in his bear skin



Ummmm!

C'mon clap!



Miss Coffin's kid party

Rally committee



"Blow Your Horn"

Varsity S (upper)





"Is there a call for new business?"

"320 College Avenue"



State champions

How to be editor



Alma Mater

Senior prom



Here's how

Welcome 10B's



Ye olde sports editor

Queen and kings



national honor society

Back Row: W. Lowry, C. Morgenstern, K. Geiger, B. Stevenson, A. Deibel, J. Loomis, V. Esch, A. Wurzman, G. Peers, K. Weigle. **Second Row:** H. Hunter, B. Jacobs, M. Coburn, J. Conn, A. Bayer, N. Wines, E. Barton, R. Siefert, F. Chilan. **Front Row:** M. Dietrich, J. Wolfram, M. Lynch, H. Teal, A. Ficken, P. Foljambe.

First Semester	Second Semester
MARGARET LYNCH.....	President.....MARION DIETRICH, JR.
HELEN TEAL.....	Vice President.....KENT GEIGER
JOAN WOLFRAM.....	Secretary-Treasurer.....KATHARINE LOWRY

MISS JANET JONES MR. NOAH NUNEMAKER MISS ANNA SOUTAR MR. CLEM NIXON MISS HELEN WRIGHT	}Advisers
---	---	---------------

CSLS—the four letters on The National Honor Society pin. These letters represent the qualities for which a student is elected to the Honor Society—character, scholarship, leadership, and service.

The most important activities of the year are the two initiations held in January and June.

As is the custom, the secretary calls to the stage the newly elected members. These names, always kept secret, are a complete surprise to all but the teachers on the advisory board.

The initiation ceremony, written especially for the Shaw chapter, is unique and impressive. Its most important feature is the passing of the lighted torch, the symbol of knowledge and civilization. The torch is extended by Mr. Dietrich to the president of the society. The newly elected member of the Junior A class, who has the highest standing, then receives it from the president.

Finally the oath is administered by Mr. Dietrich, the principal of Shaw and an honorary member of the society.

Dr. Korb spoke at the January election when thirty-three new members were taken in.

HONOR SOCIETY

CLASS OF JANUARY, 1940

Junior Ficken
Joan Wolfram
Helen Teal
Margaret Lynch
George Peers
Peggy Foljambe
Ruth Siefert
Virginia Esch
Anna Bayer

Annette Deibel
Rita Friedman
Barbara Stephenson
Evelyn Barton
Allen Wurzman
Esther Greig
Ruby Gettings
Bill Badger
Mary Ellen Fuller

Ted Needels
Mae Hodgson
Frances Budenz
Allen Drexel
Violet Petschel
Bark Bow
Betty Ferguson
Jean McHugh
Stanley Harris

CLASS OF JUNE, 1940

Marion Dietrich
Don Bales
Barbara Jacobs
Winifred Hunter
Katharine Lowry
William Lowry
Mary Louise Coburn
Norine Wines
Kent Geiger

Keith Weigle
Jean Loomis
Carl Morgenstern
Florence Chilan
Helene Hunter
Jessamae Conn
Norma Mortus
Ed McLeod
Phyllis Kruser

John Merriell
John Phillips
Marilyn Dippel
Eleanor Parker
Elaine Eicher
Elizabeth Graham
Letitia Fratianne
Sarah Andrews
Martin Meshenberg

CLASS OF JANUARY, 1941

Walter Harter
Bill Fraser
James Duff

Marilyn Davies
Sylvia Morgenstern
Harriett Bassett

Fred Tyler
Marvin Rosenfeld

Back Row: R. Friedman, N. Mortus, S. Morgenstern, N. Wines, E. Eicher, S. Andrews.
Second Row: M. Meshenberg, J. Phillips, J. Duff, F. Tyler, B. Fraser, E. McLeod, B. Badger. **Front Row:** B. Graham, M. Davies, K. Lowry, W. Hunter, M. Dippel, L. Fratianne.



national
honor
society

INSPIRED by the honors awarded the 1939 Shuttle—a first place by Columbia Scholastic Press and a first rating by National Scholastic Press Association—this year's staff has endeavored to produce a worthy edition for 1940.

As a departure from the usual red and black cover the staff chose a gray background for the lettering in the school colors.

A very active staff shared in the work of the book, and closer co-operation between editor and staff resulted in keener interest by all staff members.

Collecting information and preparing copy, scheduling appointments for senior pictures, identifying group pictures, checking activity lists, typing copy for the printer, and securing informal snaps around school are among the duties that kept the staff members at work until after dark during the winter months.

WILLIAM LOWRY Editor-in-Chief
CHARLES AULT Ass't Editor
DAVID DENNIS Photographer
DAN CALORI Artist
MISS ALBA JUNK Adviser

shuttle editorial staff

Back Row: J. Barrett, E. Faerber, G. Havens, C. Morgenstern, C. Coolidge, D. Calori, D. Dennis, T. Luci.
Front Row: W. Lowry, C. Ault, P. Fisher, P. Wikle, M. Limes.



shuttle
business
staff



Left to Right: C. Regan, J. Fox, B. Haberer, E. Ackerman.

BETTE HABERER Manager
MR. NELSON LEIST Adviser

THE income of the *Shuttle* comes from three sources: advertising sold outside the school, copies sold within the school, and charges made to clubs to cover cost of engravings.

Although collection of fees from the clubs is a matter of bookkeeping records made by the auditor of student activity accounts, the amount of advertising and number of books sold depends entirely upon the advertising and circulation staffs.

The *Shuttle* circulation staff was busy during the annual campaign in December. Posters, broadcasts, and the tireless and sustained efforts of efficient homeroom solicitors were part of the work of selling. This year's subscriptions reached 700 copies sold in advance.

Industrious members of the advertising staff sold the usual number of ads to the East Cleveland merchants who co-operated willingly.



observer editorial staff

Back Row: F. Steinbruegge, P. Comegys, H. Hunter, B. Reicher, S. Morgenstern, B. Schroeder, J. Morgan, H. Grob, S. Harris, M. Baxt, E. Mallers, E. Belgan, S. Griffith, A. Deibel, B. Badger, H. Forbush, D. Peterson, D. Guthrie, R. Ellis. **Second Row:** C. Frisbee, J. Plum, E. Kerrigan, M. Davies, R. Braund, M. Engle, M. Schneider, E. Williams, D. Schwartz, V. Balogh, A. Truppo, E. McLeod, S. Gordon, F. Tyler, D. Dennis, L. McCullough. **Front Row:** H. Studer, A. Ficken, B. Fraser, M. Dietrich, B. Jacobs, G. Peers, C. Manley.

First Semester

MARION DIETRICH..... Editorial Page Editor.....

BARBARA JACOBS..... Managing Editor.....

ALLEN FICKEN..... News Editor.....

BILL FRASER..... Sports Editor.....

GEORGE PEERS..... Make-up Editor.....

JANE PLUMB..... Exchange Editor.....

ROBERT ELLIS..... Cartoonist.....

DAVID DENNIS..... Photographer.....

MR. HUBERT McNEILL..... Adviser.....

Second Semester

ED McLEOD

BARBARA JACOBS

MARION DIETRICH

BILL FRASER

CLIVE MANLEY

SYLVIA MORGENSTERN

ROBERT ELLIS

DAVID DENNIS

MR. HUBERT McNEILL

TUCKED in a small corner in the basement of the old building, is the *Observer* room, one of the busiest rooms in the school.

This year Mr. Hubert McNeil acted as adviser. The chief change that he introduced was that the positions on the staff were not so definite as in previous years. Each person was given the opportunity to learn the entire routine of newspaper work.

Every day during eighth period, ten members of the staff met in the *Observer* room to study journalism. This was the forerunner of a journalism course to be offered to the students as an additional choice in English.

At the Ohio State Journalism meeting in Columbus, Helene Hunter was awarded first place in the editorial contest. Her editorial was, "The War and Shaw".

THE Observer Business Staff has charge of the advertising, the circulation, and other financial affairs connected with the paper. To facilitate its difficult task the staff is divided into two sections, but there is very close co-operation between them.

The circulation department, managed by Winifred Hunter and Katharine Lowry, supervised the sale and distribution of the paper to the home-rooms.

Ruth O'Malley and Dwight Evans were at the head of the Advertising Department which solicited the ads from local merchants and planned the lay-out and arrangement of ads in the paper.

James Jeromson, the Collection Manager, had the delicate job of collecting the money, meanwhile preserving pleasant business relations with the advertisers.

The staff very effectively accomplished its purpose of producing a financially successful paper for the Shaw student body.

OBSERVER BUSINESS STAFF

DWIGHT EVANSAdvertising Manager
 RUTH O'MALLEY.....Business Manager
 JIMMY JEROMSON.....Collection Manager
 MR. HOMER GIFFORD.....Adviser

OBSERVER CIRCULATION STAFF

WINIFRED HUNTER }Circulation Managers
 KATHARINE LOWRY }
 MR. HOMER GIFFORD.....Adviser

Back Row: D. Evans, R. Schaller, D. Deibel, H. Barletta, A. Drexel, A. Buzzelli, J. Jeromson, E. Sobul, T. Alleman, V. Schrock, Mr. Gifford. **Front Row:** D. Morris, D. Fox, E. Buckhalt, R. O'Malley, I. O'Reilly.

**observer
 business
 staff**



THE Junior Red Cross is the only organization at Shaw in which every student is a member. Any contribution, from a penny up, secures membership for the donor.

One boy and one girl were elected in each homeroom at the beginning of the year to act as Red Cross homeroom representatives. The social and program committees of the club planned a dance and assembly as projects for 1939-1940. Mrs. Frank Blasse, a volunteer Red Cross worker, attends all meetings as an adviser, and acts as a link between Shaw and the National Red Cross organization.

A National Red Cross Convention is held annually in Washington, D. C., to which Shaw sends a delegate. Shaw is proud to have as one of its members, Ruth Berry, who was elected vice president of the National Junior Red Cross for 1939.

BOB LOFTUS President
FRANK SCHAFFER Vice President
BARBARA REYNOLDS Secretary

Left to Right: R. Berry, R. Loftus, B. Reynolds.



**junior
red
CROSS**

student council



Back Row: W. Lowry, D. Bales, D. Palmer, F. Foster, J. Duff, B. Fraser, K. Geiger, G. Peers, B. Schroeder, B. MacDonald. **Second Row:** K. Hamilton, J. Loomis, L. Petrie, M. E. O'Brien, V. Esch, E. Anderson, R. Berry, J. Barrett, J. Williams, H. Teal. **Front Row:** Miss Olive Woodward, M. J. Todd, J. Walker, R. Siefert, H. Studer, J. Boltz.

First Semester	Second Semester
JOHN WALKER.....President.....	WILLIAM LOWRY
RUTH SIEFERD.....Vice President.....	RUTH BERRY
MARY JANE TODD.....Secretary.....	KAY HAMILTON
HAROLD STUDER.....Treasurer.....	BOB SCHROEDER
MISS OLIVE WOODWARD.....Adviser.....	MISS OLIVE WOODWARD

STUDENT participation in school government is a vital phase in a high school curriculum. Through the medium of the Student Council, Shaw pupils participate in the administration of the school.



FIRST SEMESTER EXECUTIVE COMMITTEE

- J. Walker, President
- H. Studer, Treasurer
- M. J. Todd, Secretary
- R. Siefert, Vice President

FIRST SEMESTER

Publicity Committee

D. Bales
J. Loomis
L. Petrie



Dance Committee

K. Geiger
V. Esch
W. Lowry
J. Boltz



Point Committee

B. Schroeder
G. Peers
H. Teal
J. Barrett

Show Committee

F. Foster
D. Palmer
R. Berry
E. Anderson



Lost & Found Committee

J. Duff
J. Williams
M. E. O'Brien
B. Fraser



Finance Committee

B. MacDonald
H. Studer
K. Hamilton



SECOND SEMESTER

Point Committee

P. Comegys
B. Keenan
M. Coburn



Finance Committee

M. E. O'Brien
C. Coolidge
G. Croft
B. Schroeder



Dance Committee

J. Williams
F. Foster
D. Brady
K. Geiger



Lost & Found Committee

B. Haker
P. Bussong
L. Petrie
B. Krause
J. Duff

Show Committee

B. MacDonald
L. McClelland
M. Dietrich
D. Bales
J. Loomis



Publicity Committee

M. J. Todd
H. Studer
P. Squier
B. Fraser





student council

Back Row: H. Studer, C. Driggs, D. Bales, M. Dietrich, Jr., F. Foster, K. Geiger, B. Krause, B. Keenan, B. Fraser, J. Duff, B. Haker. **Second Row:** B. MacDonald, J. Williams, L. Petrie, P. Squier, D. Brady, P. Comegys, P. Bussong, M. E. O'Brien, L. McClelland, G. Croft, C. Coolidge. **Front Row:** J. Loomis, B. Schroeder, R. Berry, W. Lowry, K. Hamilton, M. Coburn, M. Todd.

THIS past year the Student Council, under the guidance of Miss Olive Woodward, purchased six modern drinking fountains for the corridors and installed new mirrors in the washrooms. The council has charge of the monitor system and also operates the noon movie.

Representatives from nine Cleveland schools were invited to a Student Council meeting on November 21. They were conducted through the buildings, were entertained at lunch, and remained as Shaw guests throughout the day.

The dance committee sponsored dances after school and after basketball games. Other committees supervised the noon movie, point system, lost and found, finance, and publicity.

SECOND SEMESTER EXECUTIVE COMMITTEE

B. Schroeder, Treasurer
R. Berry, Vice President
K. Hamilton, Secretary
W. Lowry, President





Left to right, circle formation, starting with first bass on left: R. Hennie, L. Jarvis, D. Beeler, F. Steinbruegge, B. Patterson, E. Stinson, F. Dockstetter, F. Schaffer, P. Kruser, O. Haas, H. Martin, S. J. Brown, R. Cullen, C. Davis, R. Broadman, D. Gates, W. Blide, D. Hamilton, S. Harris, B. Kahn, D. Ryks, A. Brightman, G. Engstrom, K. Zorge, B. Story, E. Anderson, L. Davis, C. Showalter, G. Snook, J. Barch, G. Schenk, B. Mann, B. Rose, D. Gairing, V. Drago, B. J. Smith, D. McGiffin, P. Jones, B. Brown, M. Tholen, D. Caton, N. Wines, R. Kretzer, P. Whiteman, D. Paul, K. Rodin, A. Krieski, D. Pattie, J. Merriell, K. Treadwell, G. Newell, B. Badger, C. Thacker, J. Mace, D. Bales, B. Waterbury, R. Hollar, R. Dornback, B. Alden, W. Powell. **S. Formation, Top to bottom:** J. Norton, C. Chubbuck, J. Workman, B. Weske, G. Cameron, A. Carle, G. Jewett, B. Ruggles, V. Talcott, W. Walter, J. Kopp, F. Hemler, M. Foote, B. Hunscher, B. Powell, H. Allison, J. Oliver, J. Walker, J. Lewis, B. Matson, K. P. Thompson. **Drum Majorettes, Left to right:** D. Pike, B. Tabor, P. Ryan, M. Brown. **Drum Major:** P. Carver.

band

MR. MILTON NIERGARTH Director

THE lights were lowered between halves as the Shaw band blazed down the field in new and spectacular formations made visible only by the tiny lights on each member's cap. While formations were being executed the entire band sang "God Bless America." This, along with the playing of the "Black and Red" and the "Alma Mater," became the usual procedure at night football games, where the skill of the marching band was an important feature.

As usual the band united with the Glee Clubs and the Orchestra in the annual Spring Concert. It participated in the Spring Festival, and played at the Outhwaite School in March.

Early in the year former members of the band organized a Band Alumni Association to support and promote the interests of the Shaw Band in the community.

THOUGH it doesn't have a chance to parade in uniform and display spectacular formations, nevertheless the Shaw Orchestra is an important part of the musical activity of the school.

An increased enrollment, especially in the string section, came with the mid-year term. Many of the new members entered from Kirk Junior High School.

Among the various functions at which the orchestra performed were: graduation exercises, class night, the Mid-Year play, and the annual spring concert which was held in April.

Members of the orchestra were kept busy at various times with community and civic affairs at which they were asked to perform. These out-of-school activities are considered a part of the activities and duties of the school musical organizations.

MR. MILTON NIERGARTH Director

Back Row: F. Schaffer, R. Hennie, R. Matson. **Second Row:** P. Dabato, R. Spotts, R. Ruggles, W. Alden, F. Hemler, D. McGiffin, J. Oliver, R. Kahn, D. Ryks, C. Showalter. **Front Row:** S. Harris, M. Brown, E. Kennedy, E. Barton, L. Larsen, P. Jones, N. Wines, J. Jacobsen, V. Drago.



orchestra

a cappella choir



Back Row: J. Gross, A. Seid, F. Musto, E. Jacobson, R. Carlson, G. Brandt, R. Stiebeling, J. Hess, J. Lawrence, O. Swisher, A. Ficken, G. Spence, G. Baker, C. Prior, R. Birt, G. Conrad, B. Armstrong, R. Sprenger, B. Cook. **Third Row:** H. Todd, H. Hunter, P. Foljambe, R. Daws, F. Reiss, M. Meshenberg, S. Gordon, R. Oetting, R. Hayman, C. Ault, E. Binder, R. Wagner, C. Driggs, C. Studer, D. Twining. **Second Row:** J. Williams, M. Hodgson, M. Scattergood, J. Pesta, M. Lynch, G. Stockton, K. Lowry, M. Orr, J. Stahl, B. Lees, V. Wendt, B. Adamson, L. Sousa, M. Fox, V. Hiltabiddle, F. Kumhall, A. Hamilton, M. Davies, M. Parr. **Front Row:** L. Petrie, L. Morse, J. Squires, S. Hunter, F. Keiffer, R. Long, R. Lane, E. Sobul, J. Darner, S. Stickle, N. Jackson, B. Redfield, A. Yanson, B. Stephenson, F. Erickson, L. Langdon.

MISS FLORENCE SHAFFER Adviser

ONE hundred and ten voices blend in melodious harmony when the A Cappella Choir is heard on various occasions during the school year.

The customary programs of the choir throughout the year are: The Lake Erie League Festival, held this year on March 16, at Heights High School; the Spring Concert; graduation ceremonies; the Armistice day program, and the caroling in the halls at Christmas time.

Among their special performances this year were the carols sung at Halle Bros. just before Christmas, and a program given at the Methodist Church in February.

For rehearsal purposes Miss Florence Shaffer has divided this large organization into two groups which practice during school hours. Credit in music is given for the work done.



girls' glee club

Back Row: L. Pearce, J. Smith, B. Lees, H. Rekittke, E. Barker, J. Williams, P. Christy, J. Davies, N. Schaefer, A. Seid, L. Frizell, B. Krische, M. Greggor. **Second Row:** L. Pickens, S. Barakian, N. Wines, R. Lane, V. Wendt, S. Griffith, J. Darner, I. Hirschkopf, B. Adamson, S. Hunter, K. Merkle, F. Todd, M. Scattergood, V. Colville, S. Saltz. **Front Row:** G. Samartini, V. Coburn, I. Calori, M. Nixon, A. Owen, H. Hunter, P. Foljambe, M. Coburn, Lillian May, Lucille May, H. Zorn, M. Dickinson, J. Grygo, C. Hoye.

First Semester	Second Semester
MARY COBURN.....President.....	MARY COBURN
PEGGY FOLJAMBE.....Vice President.....	JEAN WILLIAMS
HELENE HUNTER.....Secretary.....	HELENE HUNTER
ALICE OWEN.....Treasurer.....	ALICE OWEN
ESTHER BARKER.....Librarian.....	ESTHER BARKER
MISS FLORENCE SHAFFER....Adviser....	MISS FLORENCE SHAFFER

WITH a membership of over half a hundred the Girls' Glee Club had a busy year both from the standpoint of musical activity and social good times.

The outstanding musical event was the spring concert given late in the year. Norine Wines entertained the girls after one meeting with a group of clarinet solos.

Among their miscellaneous activities the Glee Club filled a Thanksgiving basket, sponsored an ice cream sale, and had a potluck supper in December. At the supper the girls demonstrated that they enjoy eating as much as they do singing.

To Miss Florence Shaffer goes much credit for the smoothly blended voices of the girls in this well-known organization at Shaw.

Meetings are held bi-weekly in the music room, B-11.

ENLARGED in membership by the addition of two new chapters, Krypton and Delphi, Hi-Y saw one of its busiest years. Numerous innovations were made; among them, six-man football, the championship won by Krypton; a bowling tournament, top honors being carried away by Mazda; and closed dances held at the "Y" house on Saturday nights. Two annual affairs, the Hi-Y Show and the formal dance were successfully held.

Hi-Y has a more serious aspect also, that of upholding its purpose: "To create, maintain and extend throughout the school and community, high standards of Christian character." Character development, in keeping with the Hi-Y platform, was stressed in chapter discussions on current youth problems.

The point system, inaugurated last January, was revised so that the Meriam Trophy will henceforth be awarded on a basis of attendance only. In the first and second semesters of its adoption, the trophy was won by Copaine and Tala respectively.

First Semester	Second Semester
MARION DIETRICH, JR. President	BILL FRASER
BILL LOWRY Vice President	FRED FOSTER
DON BALES Secretary	HAROLD STUDER
J. ALLEN FICKEN Treasurer	KEITH WEIGLE
MR. F. E. WILLIAMS Adviser	MR. F. E. WILLIAMS
MR. ERIE CHAPMAN Y. M. C. A. Secretary	MR. ERIE CHAPMAN

Standing: H. Studer, D. Bales, A. Ficken, K. Weigle. **Seated:** F. Foster, B. Fraser, M. Dietrich, B. Lowry.



**hi-y
officers**



AMIGOS

Third Row: R. Leiby, C. Manley, R. Croft, W. Weske, R. Auer, W. Harter, D. Evans, C. Fix, M. Tholen, F. Tyler.
Second Row: W. Fields, R. Tuckerman, P. Bruggmann, Mr. Corl, S. Donner, W. Mattern, E. Francis, G. Weaver, C. Dick.
Front Row: B. Keefer, H. Studer.



ARGUS

Third Row: W. Boltz, B. Reed, J. Olsen, H. Allison, P. Carver, J. Graham, J. Vermillion, A. Wildern, C. Gardiner.
Second Row: J. Stewart, L. Qualman, J. Barch, G. Johnson, H. Rosen, R. Birt, J. Houle, T. Meyers, Mr. Louis.
Front Row: B. Schroeder, R. Evans.



COPAINE

Third Row: W. Gottron, L. Visci, R. Lowry, W. Keenan, R. Mulligan, D. Sinclair, A. Flor, W. Brown.
Second Row: Mr. Rees, W. Haker, J. Corl, G. Lanese, R. Palmer, W. Murray, H. Bredenberg, O. White, R. Lucas, W. Knapp.
Front Row: F. Foster, J. Walker.



DELPHI

Third Row: E. Binder, C. Wallach, B. Van Pelt, K. Thompson, R. Faye, R. Price, B. Eckert, Mr. Pallerin.
Second Row: B. Cowan, D. McGiffin, R. Grubb, R. Scott, J. Angel, R. Wagner, D. Berger, E. Conway.
Front Row: R. Verburg, D. Peterson.



ECAOWASIN

Third Row: J. Reynolds, R. Essell, R. Clark, W. Sutherland, W. Cotlin, H. Lang, V. Miller, W. MacDonald.
Second Row: Mr. Wright, P. Gerstenberger, J. Watt, C. Ault, D. Twining, J. Bryant, J. Duff, D. Hutton, G. Umstead, T. Alleman.
Front Row: W. Fraser, D. Rice.

chapters

HALCYON

Third Row: C. Wilson, R. Caton, W. Hoff, J. Roberts, A. Ficken, F. Cullen, H. Forbush, E. Hassell, W. Waterbury.

Second Row: L. Miller, R. Webster, C. Tayerle, T. Needels, R. Pew, R. Peterson, H. Fisch, R. Braund, F. Shannon.

Front Row: A. Doyle, R. Ellis.



KRYPTON

Third Row: E. McHugh, G. Pierman, J. Humphrey, D. Sparks, M. Uberstine, G. Harrell, J. Van Epp, E. Timbers.

Second Row: W. Thompson, D. Cerrezin, P. Clark, A. Rhoa, E. Sunday, R. Kilpatrick, E. Smith, D. Disbro, D. Hamilton.

Front Row: J. Phillips, R. Brooks.



MAZADA

Third Row: R. Gardner, W. Larkin, W. Sieford, W. Tetrault, D. Robbins, F. Reilly, E. Rosmussen, G. Conrad, R. McMillen.

Second Row: A. Taylor, G. Peers, E. Gutelius, A. Hansen, K. Geiger, O. Swisher, F. Langer, F. Dowdell, Mr. Arn.

Front Row: J. Squires, R. Sisson.



TALA

Third Row: R. Loftus, K. Reed, G. Smith, B. Badger, B. Custer, D. Gairing, F. Hemler, M. Taylor, M. Dietrich.

Second Row: Mr. Naragon, R. Story, D. Izant, J. Merriell, J. Bolmeyer, W. Lowry, C. Voll, R. Carson, A. Rosen, R. Ruggles.

Front Row: W. Alden, D. Bales.



LEADERS

Leaders

Standing: Mr. Shannon, Mr. Wright, Mr. Rees, Mr. Chapman, Mr. Pallerin, Mr. Corl, Mr. Arn.

Sitting: Mr. Lewis, Mr. Naragon.



RESPONSIBILITY for the varied programs of the Senior Friendship Club rests on an efficient cabinet. This executive body is composed of the four officers of the club and the heads of the various committees.

This year's program has included a Senior Friendship Club-Hi-Y banquet, which has become an annual affair, and a tea and style show for new girls at Shaw. At Christmas time, fifty dolls were dressed for the children at Rainbow Hospital, and a Christmas basket was given.

The two Friendship Club groups met together on St. Patrick's Day, for a dinner at Shaw. Another interesting program in March was given by Miss Holtz from the central YWCA who spoke on inter-racial problems. Her specific subject was the negro problem.

CABINET

First Semester		Second Semester
VIRGINIA ESCH.....	President.....	JEAN LOOMIS
JEAN LOOMIS.....	Vice President.....	MARY JANE TODD
BARBARA STEVENSON.....	Secretary.....	DOROTHY BRADY
MARY COBURN.....	Treasurer.....	MARY COBURN
MISS ALICE COFFIN.....	Adviser.....	MISS ALICE COFFIN

Back Row: R. Thomson, M. J. Todd, R. Berry, K. Hamilton, R. Siefert. **Second Row:** J. Williams, H. Hunter, C. Brown, K. Lowry, J. Squier. **Front Row:** B. Stephenson, J. Loomis, V. Esch, M. Coburn.



**senior
friendship
club**

**senior
friendship
club**



Back Row: V. Wendt, S. Spreitzer, M. Stute, E. Parker, E. Graham, D. Brady. **Third Row:** J. Snyder, J. Long, J. Conn, S. Griffith, J. Kennard, E. Corcoran. **Second Row:** L. Drenske, L. Mastrangelo, K. Sutter, R. Lane, R. Robinson. **Front Row:** M. Barch, J. Loomis, R. Gettings, E. Danielson.

HOMEROOM CAPTAINS

MISS ALICE COFFIN Adviser

FROM every junior and senior homeroom at Shaw a representative is chosen to a branch of Senior Friendship Club known as homeroom captains. The vice president of Senior Friendship Club, who is now Mary Jane Todd, presides over this group of some twenty girls.

The work of the homeroom captains is very important, for they act as a link between the cabinet and the girls themselves, making a stronger organization. Their work includes such duties as taking charge of membership drives at the beginning of the semester, collecting dues each semester, and creating a general interest in the Friendship Club's meetings and other activities. The position of homeroom captain is a voluntary one.



sophomore
friendship
club

Back Row: V. Mitchell, J. Beckman, J. Morgan, J. Polk. **Second Row:** R. Byrum, T. Luci, C. Monck. **Front Row:** M. O'Brien, L. McClelland, P. Bussong, R. Romaine.

CABINET

First Semester		Second Semester
PEGGY BUSSONG.....	President.....	LOIS MC CLELLAND
LOIS MC CLELLAND.....	Vice President.....	WINIFRED SUTTER
RUTH ROMAINE.....	Secretary.....	EVELYN GILES
MARY ELLEN O'BRIEN.....	Treasurer.....	JOAN CHRISTIAN
MISS HARRIET CARPENTER..	Adviser..	MISS HARRIET CARPENTER

BY its large enrollment the Sophomore Friendship Club proves that it is on the list of activities for the average sophomore girl.

The club meets every other Wednesday with its programs including a variety of entertainment. Speakers, such as Miss Janet DeLuna from the Higbee Beauty Salon and Mr. F. M. Baker, head of the Goodwill Missions in Cleveland, were presented this year. Parties, a treasure hunt, charades, and an amateur show provided pleasant occasions for the members.

As in all large groups where it is necessary to have an executive body, the Sophomore Friendship Club organization is no exception. The cabinet consists of officers of the club, faculty adviser, and chairmen of the various committees.

EVERY Monday afternoon the girls of the Modern Dance group are instructed in dances designed to produce grace and poise. The class is directed by Miss Alice Juringus, who is studying modern dancing at the YWCA. This is a modernized version of ballet dancing and in its advanced form is an artistic means of self-expression.

Although this was the first year of its organization, the group developed considerable skill. At its first public appearance, the Friendship Club assembly, two dances were presented; War Dance and Distortion. In February the girls presented a program of seven dances for the East Cleveland Kiwanis Club. Shortly afterward they repeated this program at a tea given for their mothers.

JEAN FOX Athletic Council Member in Charge
 MISS ALICE JURINGUS Adviser

Back Row: N. Bailey, E. O'Riley, M. E. O'Brien, G. Croft, R. Romaine, P. Bussong, J. Christian, P. Young, B. Cooper, P. Reimholz. **Fourth Row:** E. Dreger, R. Thompson, V. Schrock, S. Clark, P. Van Horn, J. Armstrong, J. Barr, J. Burns. **Third Row:** R. Byrum, W. Murray, B. Magee, R. A. Erbor, V. Kavanaugh. **Second Row:** B. A. Gifford, M. Davies, E. Leiby. **Front Row:** C. Irwin, B. J. Corbeau, J. Palmer, A. Burns, B. Bushey, M. Akers, K. Lowry, J. Fox, B. Hamilton. **Drummer:** P. Squier.



**modern
 dancing**

STATE champions twice and runners-up once is the enviable record of Shaw High's debate teams in four years of interscholastic competition.

The speakers have debated on subjects ranging from European affairs to the present question, Resolved: "That the Federal Government Should Own and Operate the Railroads."

Shaw has been a member of the National Forensic League, a national speech organization, for five years. There are 15 members. This year the Cardinals also joined the State Debate League sponsored by Ohio State University.

Probably the outstanding accomplishment of the N. F. L. group was the interscholastic debate tourney held at Shaw on February 10. Thirty-two teams from northeastern Ohio entered the contest, the first of its kind ever to be held at Shaw.

The debate team was composed of Charles Driggs and Carl Morgenstern debating the affirmative side of the question, while Wayne Houston and Marion Dietrich upheld the negative position. Morgenstern and Dietrich conclude three years of interscholastic competition this June.

MISS LOIS CRANK Coach

Left to right: C. Driggs, C. Morgenstern, Miss Crank, M. Dietrich, W. Houston.



**debate
team**

rifle club



Back Row: B. Seitz, B. Allan, C. Wilson, R. Chenault, B. Dunbar, A. Landon, C. Imboden, J. Miller. **Third Row:** E. Meade, B. Manz, B. Roden, D. Evans, D. Irwin, H. Hoffman, J. Conroy, B. Oswald. **Second Row:** C. Tayerle, F. Larned, D. Deibel, P. Bogue, R. Carlson, D. Knaebel, W. Schaeffer. **Front Row:** H. Wendt, J. McArthur, E. Kimball, F. Kappan, J. Phillips, J. Babcock.

DON KNAEBEL Acting President
 EUGENE MEADE Secretary
 JOHN MCARTHUR Treasurer
 MR. JERRY BOGGS Adviser

COMPETITION is the keynote of the Shaw Rifle Club activities. The members are constantly vying with each other for places on the rifle team. Each Thursday night, in the W. H. Kirk Junior High School basement, practice is held, and the ten best targets put their owners on the team. In a meet, while ten boys shoot, only the five best scores count.

Last year the club was granted membership in the National Rifle Association.

The team beat East, Youngstown Rayen, and Lincoln, and lost to Akron Garfield. Highest scorer on the team was Eugene Meade, who held the club record, shooting 99 out of a possible 100.

A Father-Son meet was the innovation of the year.



"What A Life"

Double duty



Modernistic, eh boys?

Sprechen Sie Deutsch?



Dennis, take my picture!



Coming up fast

ALL Shaw students receive library instruction from Miss Mary Morrison.

Since much of the curricular work depends upon the library for reference materials, classroom sets are loaned, and overnight reserve books are available in English, history, physiology, biology, debate, the theater, and other subjects.



▲▲▲ Intra-School Activities ▲▲▲

dramatic club



Left to Right: J. Ayers, J. Christian, B. Corbeau, B. Schroeder, E. Parker, H. Studer, J. Hahn, B. Sutherland, C. Ault, K. Lowry.

ELEANOR PARKER	President
HAROLD STUDER	Vice President
JANET HAHN	Secretary
BOB SCHROEDER	Treasurer
MISS LOIS DEAN	Adviser

DURING the first semester the Dramatic Club was used as an experimental workshop for the members of the advanced expression class.

Every member of the Dramatic Club was offered an opportunity to participate in plays, skits, and monologues. One of these experiments was the play, "Madness in Triple Time," produced by Harold Studer.

The second semester was devoted to the annual mid-year play under the direction of Miss Lois Dean. This year "What a Life," by Clifford Goldsmith, was presented on March 21.

Since the mid-year play is always the outstanding dramatic production of the year, competition for parts is always keen and the best talent of the entire school is represented in the production.

RECOGNIZING one of the modern requirements for success, good speech, the Debate Club has attempted to interest large numbers of pupils in various types of speech work.

The annual intramural debates, as well as several interscholastic debates, were begun in November under the sponsorship of this group. After four weeks of debating, in which 16 teams participated, two affirmative teams emerged undefeated. Former Shaw debaters volunteered to act as judges, and student chairmen conducted the discussions.

A propaganda program was presented on February 29. Speeches on the various forms of propaganda and its results, were given by ten of the members.

The Debate Club has been in existence for approximately thirty years

First Semester	Second Semester
CARL MORGENSTERN President	FRANK REILLY
BILLIE BERNHARDT Vice President	HARLEY THAYER
BILL GREEN Secretary	SYLVIA MORGENSTERN
FRANK REILLY Treasurer	JOHN OLSEN
MISS LOIS CRANK Adviser	MISS LOIS CRANK

Back Row: M. Meshenberg, C. Gardiner, H. Thayer, J. Olsen, T. McNamee, E. Smith, M. Dietrich, F. Tyler, C. Coolidge, R. Hayman, B. Austin. **Second Row:** J. Barnard, E. Mallers, M. Engle, J. Wolfram, J. Englehorn, A. Andrews, S. Gordon, P. Wikle, E. Kerrigan, L. Rigel. **Front Row:** F. Reilly, B. Green, C. Morgenstern, B. Bernhardt, R. O'Malley, S. Morgenstern.



debate
club

ANY Shaw student who is interested in history or current events is eligible to become a member of the History Club. To promote a wider and more profound interest in history is the club's purpose.

The business meetings, held every two weeks, are followed by programs which are usually instructive in nature. For one of these programs Jim Bryant gave a report on his trip to Europe last summer. In February Mr. Walter Lackrone, of the *Cleveland Press*, talked on the international situation.

Another activity of the organization has been to visit historical spots near Cleveland. Very interesting trips were taken to the Natural History Museum and to the Mormon Temple at Kirtland.

First Semester	Second Semester
RUTH BERRY.....President.....	LA VONNE DRENSKE
BILL MURRAY.....Vice President.....	RUTH BERRY
CLARA PEAK.....Secretary.....	JOHN PHILLIPS
BILL SUTHERLAND.....Treasurer.....	MILDRED DRIVER
MISS HELEN NOTT.....Adviser.....	MISS HELEN NOTT

Back Row: M. Taylor, P. Young, N. Bendrick, M. Reddy, K. Mooney, M. Snyder, L. Drenske, J. Ayers, E. Stratton, J. Dragoo, A. Eggleston, R. Cohn. **Front Row:** P. Brick, E. Kerrigan, B. Herman, R. Romaine, M. O'Brien, M. Akers, N. Arbaugh, P. Walsh, B. Cooper, L. McCullough, P. Bremner.



**history
club**



sociology club

Back Row: D. Mooney, J. Wolfram, P. Kruser, L. Pickens, V. Pickens. **Second Row:** M. Barch, P. Leland, N. Whitmarsh, A. Owen, F. Todd, K. Sutter, P. Bremner, N. Bailey. **Front Row:** L. Chesnick, S. Lenker, H. Teal, M. Hodgson, M. Fuller, R. Gettings.

First Semester

HELEN TEAL.....President..
 MAE HODGSON.....Vice President
 MARY ELLEN FULLER.....Secretary
 SHIRLEY LENKER.....Treasurer
 MR. W. H. MORRISAdviser

Second Semester

ALICE OWEN
 PHYLLIS KRUSER
 DOROTHY MOONEY
 LAUVON PICKENS
 MR. W. H. MORRIS

THOSE students interested in the social problems of the day make up the membership of the Sociology Club.

Some of the meetings consist of reports on local welfare agencies. Two of special interest were "Rainbow Hospital" and "Goodwill Industries". These reports were given by Norma Whitmarsh and Phyllis Kruser.

A trip to the County Court House on February 17 proved to be very interesting to the group. Members were privileged to watch a trial which was in progress. Their observations were discussed at the next meeting.

At Christmas time the club presented a basket of groceries to a needy family. During the second semester they held a doughnut sale to raise funds for their treasury.

**philoma-
theian
club**



Back Row: J. Butler, J. Davies, D. Mooney, M. Davies, V. Preston, J. Mills, T. Motto.
Second Row: D. Steinbach, M. Steinbach, J. Grygo, V. Massa, B. Smith, H. Bassett.
Front Row: M. J. De Frieze, F. Keiffer, B. Persing, E. Evans, H. Bradley, J. Snyder.

First Semester	Second Semester
ELIZABETH EVANS.....	President.....ELIZABETH EVANS
BETTIE PERSING.....	Vice President.....BETTIE PERSING
FRANCES KEIFFER.....	Secretary.....FRANCES KEIFFER
HELEN BRADLEY.....	Treasurer.....HELM A USSNER
MISS MARY MORRISON.....	Adviser.....MISS MARY MORRISON

PHILOMATHEIAN Club members are chosen from among those students who are very much interested in reading. The membership is divided into six committees: biography, drama, fiction, poetry, science and travel. Each member chooses the committee which interests him most and participates when his committee has charge of the meeting.

Among the discussions on this year's programs were those concerning the books, "Gone with the Wind" and "Rebecca". These were conducted by the drama and fiction committees, respectively. The biography and poetry groups reported on the lives and works of Edna Ferber and Rudyard Kipling. The science committee reviewed the book "R. F. D." and the travel committee discussed South America and Florida. "Goodbye, Mr. Chips" was discussed at another meeting.

Membership teas at the beginning of each semester, and a final spring party were given.

A play written by the club as a whole was the project undertaken by the Lotophagi Club this year. After the regular business meetings there were discussions of the plot, theme, characters, and lines. At the suggestion of Miss Madge Lindsay, adviser, the club decided to make the play a farce of high school life.

At Christmas time the Lotophagi Club gave a basket to a needy family. Contributions came from the treasury and from individual donations of food.

The club also continued the practice of reading, at each meeting, manuscripts submitted voluntarily by members. These manuscripts were then discussed and criticized by other members. The aim was to improve style, develop imagination, and to use more vivid words in writing.

First Semester

JESSAMAE CONN. President
 JAYNE JOHNSTON. Vice President
 ANNETTE DEIBEL. Secretary-Treasurer
 MISS MADGE LINDSAY. Adviser

Second Semester

JESSAMAE CONN
 CHARLES DRIGGS
 JEAN BARNARD
 MISS MADGE LINDSAY

Back Row: C. Driggs, J. Sterry, P. Wikle, J. Barnard, D. Grotenrath, D. McGiffin.
Second Row: E. Corcoran, M. Lerch, S. Heckelman, E. Skoog, M. Brow. **Front Row:**
 J. Johnston, J. Conn, A. Deibel, L. Morse.



lotophagi
club

LED by the ever-present delight in stories where animals assume human characteristics, the Latin Club gave several programs dealing with the fables of Aesop. Jupiter, Juno and Apollo with the wisdom they taught to fox, bear, frog and peacock took on a Latin dress as they were retold by members of the club. The history of the fables, the Latin iambic version of Phaedrus, the Bayeux Tapestry of the Normans, and the modern presentations of Walt Disney were discussed.

Mottoes adopted by the different states of the Union made a program of historic interest. The Oracle at Delphi, the ideas on the State found in the works of Plato and Aristotle, were discussed in later meetings.

A visit to the Cleveland Museum of Art in March revealed much of value to Latinists, particularly the 16th century tapestries depicting striking scenes in Virgil's Aeneid.

First Semester	Second Semester
MARGARET LYNCH.....	President.....
FLORENCE CHILAN.....	Vice President.....
WALTER HARTER.....	Secretary.....
RICHARD HAYMAN.....	Treasurer.....
MISS JENNIE GLEESON.....	Adviser.....

Back Row: K. Thompson, J. Lemm, D. Lennon, J. Kirby, S. Mitchell, K. Merkle, E. Corcoran, A. Truppo, J. Scott, M. Samartini, M. Meshenberg. **Second Row:** A. Smart, H. Noble, J. Cohen, E. Burris, A. Streator, B. Harmon, J. Pulford, N. Wines, H. Teal, M. Gardner, D. Herron. **Front Row:** M. Davies, W. Harter, F. Chilán, M. Lynch, R. Hayman, C. Davis.

latin club





whirlo club

Back Row: R. Faye, P. Curran, T. McNamee, J. Gross, M. Smith, R. Waterbury, R. Brunst, E. Morgan, R. Harold. **Second Row:** M. Kanally, P. Seitz, M. Rigot, B. Rigot, A. Langer, P. Leland, J. Holloran, J. Johnson. **Front Row:** J. Hoffacker, B. Blumquist, E. Knapp, D. Scott, E. Franz, N. Morgan.

First Semester		Second Semester
DON SCOTT.....	President.....	ROBERT BRUNST
ELAINE FRANZ.....	Vice President.....	DON SCOTT
ELEANOR KNAPP.....	Secretary.....	ELEANOR KNAPP
BETTY BLUMQUIST.....	Treasurer.....	BARBARA RIGOT
MISS RACHAEL A. WOLF.....	Adviser.....	MISS RACHAEL A. WOLF

TO expand interest in roller skating, and to become acquainted with those participating in this activity, is the purpose of the Shaw Whirlo Club.

This recently organized group of 35 students is a member of the National Whirlo Club.

A regular skating session is held on Friday afternoons at Skateland and a class for those interested in figure skating is conducted on Wednesdays.

Credits are given to those who learn special steps, and also for regular attendance. It is planned that when 250 points are earned, the skater is to be awarded an emblem by the club.

The group attended a banquet given for the Cleveland National Whirlo Club members at John Hay, February 10. There were also several skating parties during the year at Skateland.

stamp club



Back Row: J. Bayer, C. Siddaway, J. Davis, C. Klecka, R. Walling, W. Lewin. **Front Row:** R. Dows, R. Kouyoumjian, M. Meshenberg, R. Hayman.

First Semester	Second Semester
ROBERT KOUYOUMJIAN President	RICHARD HAYMAN
MARTIN MESHENBERG Vice President	WERNER LEWIN
RICHARD HAYMAN Secretary	RICHARD DOWS
RICHARD HAYMAN Treasurer	JOAN DAVIS
MISS ANNA M. DEVNEY Adviser	MISS ANNA M. DEVNEY

STAMP auctions, talks, stamp games, and display contests are the incentives which cause stamp enthusiasts to desire membership in the Shaw Stamp Club.

From an historical and geographical standpoint, stamp collecting is a most valuable educational hobby and extra-curricular activity.

Keeping an album owned by the club as a whole, and contributed to by individual members, is one of the major projects of the organization. Each stamp, or set of stamps, in the album is accompanied by a brief resume of its history, exemplifying the educational purpose of the club.

At the end of the year, awards were given to the most active members. These awards were given for participation in projects, and were based on a newly inaugurated point system.

TO a great extent, the success of Shaw dramatic performances depends on the technical skill of the Stage Crew. The six boys who comprise this group volunteer for the work and render a fine service, for which they receive little publicity.

The members must first serve an apprenticeship; then they join the stage crew class, for which they are awarded scholastic credits.

They have charge of the prop rooms and design and set up scenery besides handling the lighting during the plays. Taking all into consideration, their task is to ascertain that the technical end of plays is properly performed.

This year the crew visited several theaters to observe how modern equipment is used backstage.

ANDREW PAVLINA Stage Manager
FRANK MUSTO Ass't Manager
JOE HAAS Electrician
MISS LOIS DEAN Adviser

Back Row: T. Naylan, J. Haas, R. Kretzer. Front Row: R. Campbell, A. Pavlina, F. Musto.



stage
crew

SOME of the most diligent boys in Shaw are those of the Movie Crew. These boys have charge of the projector and films, and present the noon movie for the students' enjoyment.

This group has the task of successfully showing the films and rectifying any trouble very quickly so that "the show may go on". The operators run two shows of approximately two reels, each of the three lunch periods. Theirs is a service that is indispensable in the life of Shaw students.

The crew receives little glory for the difficult task which it executes exceptionally well. Lunches often have to be eaten in spare moments but the spirit of fun that prevails makes even this seem no great hardship.

FRED FOSTER Chief Operator
CHARLES PATTON Ass't Chief Operator
MISS OLIVE WOODWARD Adviser

Back Row: D. Gower, R. Wagner, D. Thomas, W. Walter, C. Patton, F. Foster.
Front Row: E. Loeber, F. Crane, D. Herron, B. Knorr, W. Wallace, R. Stiebeling.

**movie
crew**





photo- graphic club

Back Row: G. Peers, W. Hatch, D. Webster, J. Lawrence, D. Evan, C. Tayerle, B. Bacon.
Second Row: J. Bayer, W. Coveny, B. Allen, S. Nassau, K. Reed, C. Spencer, R. Persing.
Front Row: P. Wikle, L. Stern, G. Ober, D. Dennis, G. Webster, J. Humphries.

First Semester	Second Semester
DAVID DENNIS.....President.....	BILL ALLAN
GEORGE WEBSTER.....Vice President....	GRANT OBER
GRANT OBER.....Secretary-Treasurer.....	PAULEEN WIKLE
MR. O. N. CRAIG.....Adviser.....	MR. O. N. CRAIG

It is not unusual to see a student taking candid shots around Shaw. This is but one example of the activity of the Photographic Club. These young amateurs display their work at club meetings for discussion and criticism.

Among the activities of the year are the educational field trips taken to professional studios. One of these was conducted to the Parade Studios, Inc., where the members photographed a living model and observed a demonstration of photographic make-up.

Mr. Flannigan, of the Harris-C. Boyd-Potter Co., explained the development for fine-grained effects at one meeting.

Such past members as Edwin Perry, of Nela photographic laboratories and George Bechtel, of Briar Studios, illustrate the serious purpose and the success of the leading members of this group.

chess & checker club



Standing: H. Immke, R. Stanford, D. Virgien. **Sitting:** J. Pardee, E. Binder, P. Foljambe, R. Kouyoumjian, R. Brunst.

First Semester	Second Semester
ERNEST BINDER.....	President.....
BOB KOUYOUMJIAN.....	Vice President.....
PEGGY FOLJAMBE.....	Secretary.....
PEGGY FOLJAMBE.....	Treasurer.....
MR. JOHN L. SNAVELY.....	Adviser.....
	BOB BRUNST
	JACK PARDEE
	BOB KOUYOUMJIAN
	HARRY IMMKE
	MR. JOHN L. SNAVELY

FOR those students who are interested in chess or checkers, the Shaw Chess and Checker Club provides an opportunity for the development of skill in these games.

The activities of this club revolve around the purpose which is "the encouragement of chess and checkers and the bringing together of their players."

The regular business meetings are followed by informal periods of competition among the members. Also during these sessions the less skillful players are given a chance to improve in technique.

The club is a member of the Cleveland Scholastic Chess League and has a team entered in the League's tournaments. In these tournaments Shaw beat Collinwood 5-3, Heights 6-2, West Tech. 6-2, Shaker by a forfeit, and tied Heights 4-4.

TO BE happy one must be healthy. This no doubt accounts for the large enrollment of Shaw's Health Club. Here, the girls learn about matters concerning public and personal health.

At one meeting Mrs. Brady, from the American Red Cross, talked about public health service. Miss Berg, from Huron Road Hospital, gave an interesting discussion on personal health at another. Miss Nina McWebb, Shaw High's nurse and adviser of the club, explained some new developments in modern medicine at a recent meeting.

The Health Club has an executive body consisting of the officers of the club and the faculty adviser. A representative is chosen from each homeroom to take care of such matters as the collection of dues and memberships.

First Semester	Second Semester
BETTY ANN BAILEY.....President.....	PEGGY YOUNG
RUTH BERRY.....Vice President.....	MARJORIE SOLT
JOAN CHRISTIAN.....Secretary.....	TINA LUCI
JOAN AYERS.....Treasurer.....	MILDRED DRIVER
MISS NINA MC WEBB.....Adviser.....	MISS NINA MC WEBB

Back Row: E. Howell, G. Jones, M. Knuckels, C. Knudsen, M. Biggins, L. Drenske, M. Schneider, E. Evans, K. Sutter, M. Schwarer, J. Davies, J. Kennard, P. Windsor, E. Stratton, P. Brick. **Second Row:** R. Morris, R. Blauman, J. McHugh, N. Pickens, P. Bremner, N. Bailey, M. Kast, J. Morgan, M. Solt, R. Moore, M. Heinle, P. Bussong, R. Cisar. **Front Row:** B. Reynolds, L. McCullough, J. Christian, B. Bailey, R. Berry, J. Ayers, F. Averill, J. Grygo.



health club

In the spring of 1939 a handful of Shaw students eager to increase their appreciation of fine music, and encouraged by Mr. Milton Niergarth, organized the Clef Club.

This small group of earnest musicians meets each Wednesday to study orchestral and operatic productions.

The project for the year has been the training of members for the Music Memory and Appreciation Contest under the auspices of The Women's Committee of the Cleveland Orchestra, held April 19. It is necessary to send a team of ten members. A definite plan of study, provided by the Committee, includes the study of the lives and works of composers.

The club has purchased some of the required phonograph records and expects to acquire more as time goes on.

First Semester	Second Semester
STANLEY HARRIS.....President.....	FRANK HEMLER
VIRGINIA LAMBERT.....Vice President.....	BOB KAHN
JAYNE JOHNSTON.....Secretary.....	MARION DAVIES
BILL BADGER.....Treasurer.....	MARION DAVIES
MR. MILTON NIERGARTH....Adviser....	MR. MILTON NIERGARTH

Back Row: N. Wines, P. Jones, V. Talcott, P. Mumper, S. Griffith. **Second Row:** R. Kahn, R. Hennie, L. Jarvis, F. Schaeffer, C. Showalter, F. Hemler, J. Merriell. **Front Row:** M. Todd, B. Stephenson, J. Johnston, S. Harris, V. Lambert, A. Krieski, M. Lerch.



clef
club



art club

Back Row: R. Braunlich, E. Kelsey, G. Fisher, D. Calori, J. Nielsen, R. Hall.
Front Row: L. Steer, F. Kumhall, J. Smith, P. Roberts.

Back Row: R. Ellis, E. Sylvester, A. Stern, E. Schmidt, S. Jones, M. Craigie.
Front Row: J. Sterry, P. Squier, C. Brown, A. Nicolosi.

First Semester	Second Semester
CYNTHIA BROWN.....President.....	ROBERT ELLIS
JOY STERRY.....Vice President.....	PATTY SQUIER
ROBERT ELLIS.....Secretary-Treasurer.....	JOY STERRY
MISS MARION BRIGHT.Adviser.....	MISS MARION BRIGHT

ACCORDING to custom, Art Club members decided what their project for each semester was to be. They chose to make Christmas cards the first semester this year. While still in the festive spirit they enjoyed a Christmas party, where gifts were presented to all graduating members of the club.

As the second semester's project, the members made various articles of cork; such as pins, notebook covers, and coaster sets.

Late in February a group of members, escorted by Miss Bright, visited the Cleveland Museum of Art. There, after hearing a lecture, they saw the 68 masterpieces which had been on exhibit at the two world's fairs in 1939. Their own annual art exhibit was presented in early May.

Gee—nuthin' happened

Change, please!

Strike it up!

Perplexin'

Pretty!

Looks interestin'

α shuttle
snap page

▲▲▲ Advertising ▲▲▲



Standing: Evelyn Stratton, Jeanne Burns, Joan Ayers. **Sitting:** Lucille Rigel, Jewette Johnson.

The ADVERTISING STAFF would like the STUDENT BODY to remember:

A HOME HEATING CO.
BLUMEL IGNITION CO.
KARL BROWN

DEAN CLEANING CO.

DE SALVO SHOE REPAIR

DELMAR RESTAURANT

DODGE'S FUNERAL HOME

DAUGHERTY LUMBER CO.

EAST CLEVELAND COAL CO.

EAST CLEVELAND LUMBER CO.

EAST CLEVELAND SCHOOL OF BUSINESS

EHRIG PRINTERY

EVANS FLOWERS

FOSTER DANCE STUDIO

GORDON BICYCLE

HERRINGSHAW CO.

HOFFMAN-CARLSON

IVANHOE COAL CO.

JOHN SERVICE STATION

FRANK J. LAUER

TONY MAYO

MORSE-CRABLE COAL CO.

GEORGE N. NELSON

NICK'S BARBER SHOP

OLD FASHION BOARDING HOUSE

PATTERSON-SARGENT CO.

RADIO & ELECTRIC CO.

RIGEL BROS.

E. L. TINDALL HEATING CO.

WILCOX COLLEGE OF COMMERCE

WINDERMERE STORAGE CO.

WIND-A-MEER THEATRE

WHITE TOOL & SUPPLY CO.

SHAW HAYDEN THEATRE

STONEBRAKER DRUGS

SWEDISH HOME BAKERY

Those that gladly helped

We are grateful to you

If it is worth having, it will be here

A few of Shaw's Girls looking over some Graduation Gifts at Nelson's Jewelry Store. The store which has served Shaw Graduates for the past Twenty Years.



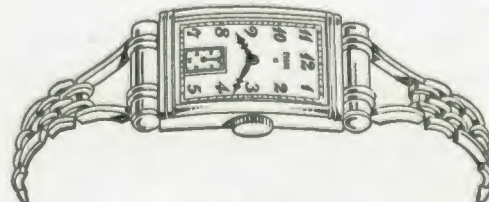
PUNCTUALITY

A WATCH

As Important as a Diploma
See Our Windows for Suggestions for the Graduate



ELGIN DE LUXE 17 JEWEL
Very New \$39.75
Other Models from \$21.50 Up



ELGIN 17 JEWEL
Gold Filled Case With
Metal Band \$45.00
Many Designs from \$21.50 Up



EDITH . . . Dainty, gracefully styled new **GRUEN.**
Yellow gold filled case, 15 jewels.....\$29.75

As Important as a Diploma
A Dependable Watch

GEORGE N. NELSON

GLenville
4694

Jeweler

East Cleveland's Jewelers Since 1920

1385
Hayden Ave.

Smooth Sailing...

There are no uncharted seas to sail in buying printing from us, because we believe in giving our customers full value for their money. In other words, we work *with* you, as well as *for* you. Steer clear of the sea of competition and you'll not run into squalls.

THE EHRIG PRINTERY

1784 Amherst Street

GLenville 9094

MONDAY, Sept. 11—Students return to classes; joyous students dismissed at twelve.

FRIDAY, Sept. 15—First football rally; salutes to the new bridegroom and new papa. Shaw tramples East 37-0 in sweltering heat.

WEDNESDAY, Sept. 20—Dick Palmer, Virginia Esch, Harry Brendenberg are elected senior class president, vice president, and secretary-treasurer respectively.

TUESDAY, Sept. 26—Old cafeteria system of full forty-five minutes reinstated—what a blessing!

TUESDAY, Oct. 10—Ruth Berry is elected Shaw's 1939 football queen.

SATURDAY, Oct. 21—Blue Saturday—Lakewood initiates a Shaw loss, 14-0.

Compliments of
IVANHOE COAL COMPANY
Fuel for every Furnace
KE 1446

BLUMEL IGNITION COMPANY
Auto, Electric, Radiator, Speedometer Service
14201 Euclid Ave. GLenville 5922

Invalid Car GLenville 4675
DODGE'S FUNERAL HOME
1331 HAYDEN AVENUE
Guy B. Dodge, Mgr.
"A Friend When You Need One"

Please give us a trial
NICK'S BARBER SHOP
Artistic Ladies' and Gent's Haircutting
First Class Service
Nick Calvitti 1645 Hayden Avenue

FRANK J. LAUER

FANCY and STAPLE GROCERIES

FRUITS and VEGETABLES

MUlberry 2264 14204 Euclid Avenue

THE HERRINGSHAW CO.

Complete Stock of Models

GOOD HARDWARE

2169 Noble Road GLEnville 5906

THURSDAY, Oct. 26—Straw hat bonfire, snake dance, 'n everything down at Shaw field in the p.m.

FRIDAY, Oct. 27—Vacation! N. E. O. T. A.

SATURDAY, Oct. 28—Shaw stages a comeback by tilting Elyria 7-0.

FRIDAY, Nov. 3—The never-to-be-forgotten Lorain football game. Everyone is wild—Shaw 27—Lorain 27.

WEDNESDAY, Nov. 8—Annual Armistice day Assembly—impressive as always.

FRIDAY, Nov. 10—Rally before Heights game—lasted till after ten—pounds of noise.

SATURDAY, Nov. 13—Shaw 13—Heights 13.

TUESDAY, Nov. 21—Yale-Harvard game—Harvard victorious.

CONGRATULATIONS SENIORS

A Booster for Shaw High School and for Better Fuel



THE EAST CLEVELAND COAL CO.

Dave Whale

Howard (Howie) Whale

For Your Parties

And Dinners—

go to

THE OLD FASHIONED BOARDING HOUSE

Across the Street From
SHAW HIGH

1910

"Thirty Years of Service"

1940

THE EAST CLEVELAND LUMBER CO.

SHAW AVENUE and NICKEL PLATE R. R.

Lumber for Every Purpose

Storm Sash Doors Insulation
Plywood Wallboard Roofing Shingles

GLEnville 5988 Financing Arranged

DANCE OR LEARN TO DANCE
at
FOSTER DANCE STUDIO
Open all summer
13929 Euclid Ave., East Cleveland

Always Open Real Service
DELMAR RESTAURANT
14306-08 EUCLID AVENUE
MULberry 9374 Cleveland, Ohio

10313 Shale Avenue CEdar 9592
Compliments of
TONY MAYO
PROFESSIONAL INSTRUCTOR
Cleveland Roller Figure - Dance Skating Clubs

Compliments of
SHAW HAYDEN THEATRE

Compliments of
SWEDISH HOME BAKERY
Mrs. Edith Holmes, Prop.
GLEnville 6123 14468 Euclid Avenue

“WHEN”

Moving (local or long distance) call us for quotation. Makes no difference how large or small. We are equipped to take care of same with modern equipment, including storage, crating, packing and shipping facilities.

•

**THE
WINDERMERE STORAGE
COMPANY**

14441 Euclid Ave., 1451 Hayden Ave.
EAST CLEVELAND
MULberry 6360

**THE
WHITE
TOOL & SUPPLY CO.**

SUPPLIES . .
TOOLS and
MACHINERY

•

1313-1317 West Sixth Street
Cleveland, Ohio

« « senior directory » »

- ABAZIO, Emilio Joe
 1694 Lockwood Ave.
- ALDEN, William A.
 1203 Bender Ave.
- BABCOCK, John Sawyer
 15409 Brewster Road
- BADGER, John William
 883 Caldonia Avenue
- BAIN, Arline
 1039 Thornhill Drive
- BARAKIAN, Sarah E.
 1851 Brightwood Ave.
- BARCH, Marguerite I.
 1844 Knowles St.
- BARRY, Jack
 1335 Hampton Road
- BAXT, Morton H.
 1510 Eddington Rd.
- BAYER, Anne
 1846 Grasmere St.
- BELGAN, Elsie P.
 1243 Rozelle Ave.
- BENSON, Kathleen
 863 Greyton Road
- BERR, John J.
 2134 Westburn Road
- BINDER, Ernest C.
 923 Whitby Road
- BIRTLEY, Tom C.
 3418 Winsford Road
- BISHOP, James A.
 1352 E. 134th St.
- BLAUMAN, Kenneth W.
 13614 Fourth Avenue
- BLAUMAN, Roberta E.
 983 Greyton Road
- BLUMQUIST, Betty J.
 16015 Elderwood Ave.
- BOLTZ, Jeanne
 837 Helmsdale Road
- BOW, Bark Hall
 15929 Euclid Avenue
- BRADLEY, Helen
 1059 Selwyn Road
- BREDENBERG, Harry
 1240 E. 144th Street
- BROWN, Cynthia
 1407 E. 135th Street
- BROWN, William R.
 1861 Roxford Road
- BUDENZ, Frances
 916 Whitby Road
- BUNCE, William D.
 14216 Woodworth Ave.
- BURKHART, Harry L.
 900 Selwyn Road
- BURIAN, Charles C.
 15409 Euclid Ave.
- CABLE, Robert D.
 14009 Bardwell Ave.
- CALDWELL, Marie
 13411 Garden Road
- CARLSON, Keith A.
 1531 Pontiac Ave.
- CARLSON, Mildred
 1014 Greyton Road
- CHEEKS, Robert
 1645 Carlyon Road
- CHESNICK, Leona
 1534 Belmar Road
- CIOLFI, Quinty Peter
 13305 Second Ave
- COHN, Robert Jay
 1563 Eddington Road
- CONNORS, Elinor
 980 Nela View Ave.
- COOPER, Robert B.
 16284 Glynn Road
- COUGHLIN, Leonard E.
 14321 Elm Ave.
- CRAIGIE, Marian V.
 1050 Greyton Road
- CROSS, Lois E.
 1763 Noble Road
- CURRAN, Peter H.
 13233 Euclid Ave.
- DEIBEL, Annette
 3423 Henderson Rd.
- DEMMERLE, Harriett
 1228 Yellowstone Rd.
- DENNIS, Charles
 1541 Hayden Ave.
- DETHLOFF, J. Harold
 13604 Garden Road
- DIPPEL, Ruth J.
 1745 Chapman Ave.
- DIXON, William
 1862 Beersford Ave.
- DORAN, Kenneth
 1834 Vassar Ave.
- DREXEL, William A.
 13906 Orinoco Ave.
- DUNBAR, Ralph E.
 13405 Gainsboro Ave.
- ELLIS, Robert M.
 12708 Speedway Overlook Dr
- ENGLE, Maxine
 13710 Milan Ave.
- ERICKSON, Florence
 14302 Scioto Ave.
- ESCH, Virginia A.
 22160 Calverton Rd.
- EVANS, Robert C.
 892 Selwyn Road
- EWING, Lillian M.
 13826 Shaw Ave.
- FAERBER, George
 1890 Wadena Ave.
- FERGUSON, Betty
 1567 Doan Ave.
- FICKEN, Allen
 15956 Glynn Road
- FISKE, John
 3386 Lownesdale'e Road
- FOLJAMBE, Peggy
 1855 Starwood Ave.
- FOOTE, Arthur
 1523 Pontiac Street
- FREAS, Betty Jane
 1637 Holyoke Ave.
- FREDERICK, Eleanor
 1374 Shawview Ave.
- FULLER, Mary Ellen
 13605 Garden Road
- GALLESE, Harry
 15303 Nela View Ave.
- GANS, Melvin
 14404 Shaw Ave.
- GETTINGS, Ruby
 1238 E. 144th St.
- GOWER, Wilbert N.
 1645 Elberon Ave.
- GRAY, William
 1769 Hower Ave.
- GREEN, Jane
 889 Helmsdale Road
- GREEN, William D.
 14100 Woodworth Road
- GREIG, Esther
 928 Greyton Road
- GROB, Homer
 1534 E. 133rd St.
- HAAG, Jane
 14104 Strathmore Ave.
- HAAS, Oliver
 1747 Amherst St.
- HARRIS, Stanley
 12612 Superior Ave
- HODGSON, Margaret M.
 14017 Northfield Ave.
- HOFFACKER, Marguerite
 3430 Lownesdale Road
- HUBBELL, Marie
 14074 Superior Road
- JENKINS, Joseph
 1743 Amherst St.
- JOHNSTON, James
 1710 North Taylor Road
- JOHNSTON, Jayne
 14149 Euclid Ave.
- JONES, Gwen E.
 11903 Lake Shore Blvd.
- JONES, Marilyn
 1196 Bender Ave.
- JONES, Richard F.
 1008 Helmsdale Road
- KAGY, Robert S.
 1837 Vassar Ave.
- KAPPEN, Frank
 15633 Brewster Road
- KEEFER, Jane
 14809 Ardenall Ave.
- KENWORTHY, Robert W.
 13633 Euclid Ave.
- KEPTNER, Laverne
 1725 Wymore Ave
- LARNED, Frank
 1729 Eastham Ave.
- LAVIGNA, Mabel
 1871 Woodlawn Ave.
- LAYMAN, Dorothy
 14015 Baldwin Ave.
- LELAND, Phyllis
 1830 Stanwood Ave.
- LENKER, Shirley
 1053 Carlyon Road
- LEWIS, Bertha
 1316 Shawview Ave.
- LEWIS, Janet
 1445 E. 133rd St.
- LYNCH, Margaret
 12570 Euclid Ave.
- McHUGH, Jean
 891 Selwyn Road
- MILLER, Vernon
 1823 Allendale Ave.
- MORRIS, Dorothy
 1000 Helmsdale Ave.
- NEEDELS, Ted
 945 Brunswick Road
- PALMER, Richard
 1725 Strathmore Ave.
- PATTERSON, Bruce
 1354 Shawview Ave.
- PEERS, George
 1862 Idlewood Road
- PETSCHL, Violet
 1191 Rozelle Ave.
- PEW, Richard
 1376 Hampton Road
- PIKE, Doris
 14416 Elm Ave.
- POPE, George
 1454 Hayden Ave.
- PORTER, Virginia
 1762 Wymore Ave.
- PRICE, Robert C.
 1711 Bryn Mawr
- RADTKE, Doris
 14780 Elderwood Ave.
- REICHARD, Betty
 1521 Holyoke Ave.
- REMINGER, Eugene
 16000 Neladale Road
- ROGAZIONE, Joe M.
 1865 Pen'ose Ave
- ROSEN, Allard J.
 14765 Elderwood Ave.
- RUGGIERO, Mary
 1602 Lakefront Ave.
- SANBORN, Jane
 1081 Greyton Road
- SCHILLER, Clara
 14304 Scioto Ave.
- SCHMIDT, Esther
 1751 Page Ave.
- SCHNEIDER, Marjorie
 13404 Fifth Ave.
- SCHWARTZ, Doris
 14126 Shaw Ave.
- SCOTT, Harriett
 14700 Strathmore Ave.
- SIEFORD, Ruth
 1544 Eddington Road
- SIGWORTH, Wallace
 14013 Bardwell Ave.
- SIMONELLI, Evelyn
 1832 Woodlawn Ave.
- SOBUL, Evelyn
 14120 Superior Road
- SOUSA, Lillian
 1627 Eddy Road
- SPARE, Betty
 1725 Wymore Ave.
- SPRENGER, Richard
 1879 Knowles Ave.
- STANCOMBE, Douglas
 1815 Roxford Road
- STANDFIELD, Jack
 14115 Scioto Ave.
- STEPHENSON, Barbara
 1378 Shawview Ave.
- STERN, Roger
 1270 E. 141st St.
- STORY, Dorothy
 1561 Elsinore Ave.
- SULLIVAN, Don
 14121 Bardwell Ave.
- SUNDMAN, Carl
 1528 Belmar Road
- SWITZER, Myron
 924 Dresden Road
- TARTAGLIA, Nicholas
 1837 Woodlawn Ave.
- TEAL, Helen
 12625 Phillips Ave.
- TINDALL, Robert
 15643 Euclid Ave
- WALKER, John
 15717 Oakhill Road
- WALKER, Robert
 16005 Hazel Road
- WEBSTER, George
 13724 Fernwood Road
- WHITMARSH, Norma
 1728 Rosedale Ave.
- WINTERS, Jack
 14304 Euclid Ave.
- WOLFRAM, Joan
 1830 Roxford Road
- WOODRICH, Phyllis
 14213 Northfield Ave.
- WURZMAN, Allen
 1343 E. 143rd St.



DOUGHERTY LUMBER CO.

Cleveland's Largest

4300 East 68th Street
1053 East 152nd Street
12100 Euclid Avenue
Telephone DIamond 1200



THE MORSE-CRABLE COAL CO.

Retail Coal Dealers

•
Main Office and Yard
1653 DOAN AVENUE
EAST CLEVELAND
MULberry 4574

•
Branch Yards
Green Road at 1335 W. 116th St.
South Euclid Lakewood 7200

THURSDAY, Nov. 23—No school: Mr. Roosevelt's Thanksgiving Day.

MONDAY, Nov. 27—"Shuttle" drive begins.

FRIDAY, Dec. 1—Basketball season starts with a bang. Shaw 72—John Adams 29.

FRIDAY, Dec. 15—Basketball team avenges football loss. Shaw 70—Lakewood 36. Ollie White scores all time record of 24 points.

FRIDAY, Dec. 22 to TUESDAY, Jan. 2—Out on parole—Christmas Holidays.

WEDNESDAY, Jan. 10—Charlotte Monck wins a box of candy for her rendition of Indian Summer at Sophomore Friendship amateur show.

A HOME HEATING CO.

Tinners—Furnace—Roofing
Air Conditioning

•
Don Fisher
13513 Euclid

Wm. Powell
Liberty 1350

Hillside Dairy Products

RIGEL BROS. QUALITY GROCERIES

•
2207-2209 Taylor Rd. GL. 6745-6746
15821 Euclid Ave. LI. 5800-5801

Birds Eye Frozen Foods

All Garments "SANITONED"
Note the Difference

Garments Fully Insured
All Work by State Licensed Plant Operators

GLenville 5840 **Dean** Euclid at Coit
CLEANERS • TAILORS • FURRIERS

Free Pick-Up and Delivery

Compliments of

**WIND-A-MEER
THEATER**

THURSDAY, Jan. 11—Thirty-three members are inducted into the Honor Society. Dr. Korb is introduced.

FRIDAY, Jan. 12—Student Council Elections. Don Bales, Jean Loomis, and Bill Haker elected president, vice president, and secretary-treasurer, respectively, of the June graduating class.

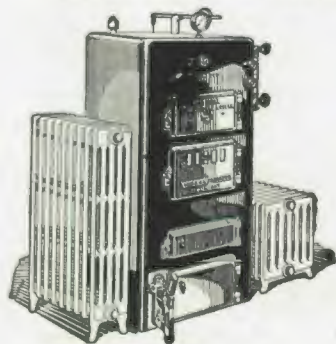
TUESDAY, Jan. 16—Senior Friendship Club Assembly—first peep at new modern dance group. Nice!

THURSDAY, Jan. 18—Kid day—Evelyn Sobul and Johnny Walker are mighty cute kids. Girls inter-class swimming meet—seniors on top. Chuck Ault takes a plunge—clothes and all.

E. L. TINDALL HEATING CO.

14313 POTOMAC AVENUE

●
*Authorized
American Radiator Sales and Service*



Hot Water-Steam-Vapor Heating Systems

STOKERS
OIL BURNERS
GAS BURNERS
UNIT HEATERS
GAS HEATERS
CONDENSATION PUMPS
THERMOSTAT CONTROLS
WARM AIR FURNACES & BLOWERS

*Let Our Practical Heating Engineers
Check Your Heating Troubles*

ALL WORK GUARANTEED

Call Day or Nite

GLenville 9058

YEA, Margaret
 13408 Hartford Road
 YUENGERT, Paul
 1821 Noble Road
 AINGWORTH, Thomas
 13613 Beaumont Ave.
 AKERS, Martha
 1841 Hastings Ave.
 ALLAN, William
 16265 Glynn Road
 ANDERSON, Eloise
 13417 Fifth Ave.
 ANDREWS, Sarah
 10221 Foster Ave.
 ARBAUGH, Nellie
 1857 Rosemont Road
 ARMSTRONG, Jane
 14114 Orinoco Ave.
 AULENBACHER, Margaret
 1251 Rozelle Ave.
 AYERS, Joan
 3329 Sylvanhurst Road
 BAILEY, Betty
 15623 Euclid Ave.
 BAILEY, Norine
 16018 Elderwood Ave.
 BALDWIN, Virginia
 1821 Noble Road
 BALES, Don
 3407 Hartwood Road
 BALOGH, Virginia
 2129 Noble Road
 BALUCKIAN, Edward
 14522 Dover Ave.
 BARCLAY, Janet
 18318 Plymouth Place
 BARNARD, Jean
 14700 Shaw Ave.
 BARNES, Albert
 1262 E. 142nd St.
 BARTON, Evelyn
 13517 Beaumont Ave.
 BASSETT, Harriett
 15777 Euclid Ave.
 BATT, Audrey
 1756 Page Ave.
 BECHTEL, Sara Jane
 1861 Belmont Road
 BERKEY, Ruth
 907 Nela View Road
 BERNHARDT, Billie
 1743 Bryn Mawr Ave.
 BERRY, Ruth
 14413 Orinoco Ave.
 BIDGOOD, Helen
 13301 Sixth Ave.
 BIRT, Roy
 14517 Alder Ave.
 BISSON, William
 1259 E. 146th St.
 BOLMEYER, James
 13420 Beaumont Ave.
 BOSWORTH, Franz
 1738 Holyoke Ave.
 BRADY, Dorothy
 1268 E. 135th St.
 BREMNER, Margaret
 14303 Scioto Ave.
 BRICK, Patricia
 1703 Holyoke Ave.
 BRIGHTMAN, Alvin
 1876 Stanwood Road
 BROW, Marie
 1915 Rosemont Road
 BROWN, Constance
 3349 Sylvanhurst Road
 BROWN, Lorraine
 12824 Superior Ave.
 BRUGMANN, Jack
 1779 Amherst Ave.
 BRYANT, James
 1829 Wymore Ave.
 BUCKHALT, Edith
 1374 E. 134th St.
 BURGER, Shir'ey
 1548 Glenmont Road
 BURNS, Jeanne
 1577 Doan Ave.
 BURTON, Dewey
 14011 Orinoco Ave.
 BUSHEY, Betty
 14402 Orinoco Ave.
 CALORI, Ida
 1856 Woodlawn Ave.
 CARLSON, Virginia
 1758 Auburndale Ave.
 CATLIN, Robert
 953 Brunswick Road
 CATON, Richard
 1890 Sheldon Ave.
 CHILAN, Florence
 15617 Hazel Road
 CHUBBUCK, Charles
 13222 Forest Hill Ave.
 CLARK, Margaret
 14110 Superior Road
 CLARKE, Jack
 1346 Elwood Road
 COATES, Marion
 14317 Terrace Rd.
 COBURN, Mary
 1742 Elsinore Ave.
 COHN, Louis
 1071 Thornhill Drive
 CONDELL, Joseph
 1843 Beersford Road
 CONN, Jessamae
 1309 E. 142nd St.
 CONROY, Robert
 1377 E. 139th St.
 CONWAY, Edward
 2036 Hayden Ave.
 COOK, Berto
 1726 Bryn Mawr Road
 COOK, Betty
 1416 Hayden Ave.
 COOMBES, William
 14613 Strathmore Ave.
 CORL, James
 1931 Rosemont Ave.
 CROOKHAM, George
 14406 Woodworth Ave.
 CULLEN, William
 1079 Carlyon Road
 CUSTER, Robert
 1334 E. 142nd St.
 D'ABATO, Peter
 1863 Wadena Ave.
 DARNER, Jean
 14140 Superior Road
 DEIKE, Shirley
 1305 E. 152nd St.
 DEMING, Robert
 14304 Euclid Ave.
 DENNIS, Marjorie
 895 Helmsdale Road
 DERRY, Philip
 14019 Orinoco Ave.
 DIAMOND, Ruth
 1120 Carlyon Road
 DI BIANCA, Jennie
 14401 Mayfair Ave.
 DIETRICH, Marion C., Jr.
 834 Caledonia Ave.
 DILLEY, George
 1889 Windermere Ave.
 DIPPEL, Marilyn
 14406 Northfield Ave.
 DISBRO, Dorothy
 1254 E. 134th St.
 DOMBROSKI, Dorothy
 14519 Elm Ave.
 DOYLE, Arthur
 14605 Strathmore Ave.
 DRAGO, Virginia
 1865 Roxford Road
 DRAGOO, Jeanne
 14600 Euclid Ave.
 DUNCAN, Grace
 1090 Greyton Road
 ECKERT, Bradley
 15632 Euclid Ave.
 EICHER, Ruth Elaine
 15801 Hazel Road
 ELLIS, Dorothy
 13310 Graham Road
 ENGEL, Bob
 14100 Mayfair Ave.
 ENGLEHORN, John
 1641 Carlyon Road
 EVANS, Elizabeth
 859 Caledonia Ave.
 EVERSON, Paul
 1728 Collamer Ave.
 FELDMAN, Herbert
 1075 E. 125th St.
 FELDNER, Marian
 1643 Elsinore Ave.
 FLOR, Al
 936 Whitby Road
 FOLJAMBE, Thomas
 1855 Stanwood Ave.
 FORGERSON, Lois
 1619 Lakefront Ave.
 FORGERSON, Marion
 1519 Lakefront Ave.
 FOSTER, Elizabeth
 15900 Terrace Road
 FOX, Doris
 13823 Fernwood Ave.
 FOX, Jeanne
 13511 Graham Road
 FOX, Myrtle
 908 Nela View Road
 FRANZ, Elaine
 14115 Orinoco Ave.
 FRATIANNE, Letitia
 1184 N. Lockwood Ave.
 FRIEDMAN, Rita
 1233 E. 125th St.
 GARDINER, Charles
 963 Brunswick Road
 GEIGER, H. Kent
 1729 Allendale Ave.
 GIFFORD, Beth
 13516 Graham Road
 GLEASON, Richard
 934 Ravine Drive
 GOODWYN, Jack
 14409 Elm Ave.
 GOSKE, Betty
 13421 Emily Ave.
 GOTTRON, Warren
 15302 Terrace Road
 GRAHAM, Elizabeth
 13412 Garden Road
 GROTENRATH, Dolores
 1992 Hayden Ave.
 GUSTAFSON, Harriett
 16019 Caledonia Ave.
 HABERER, Bette
 1000 Greyton Road
 HAGAN, Robert
 1714 Elsinore Ave.
 HAKER, William
 14215 Northfield Ave.
 HALL, Russell
 1703 Elsinore Ave.
 HANLON, Marybelle
 13912 Ardenall Ave.
 HAROLD, Ralph
 916 Greyton Road
 HAY, Dorothy
 14512 Orinoco Ave.
 HAYMAN, Richard
 14078 Superior Road
 HECKMAN, Dorothy
 1775 Fay Ave.
 HECKMAN, George
 1748 Hartshorn Road
 HEMLER, Frank
 1841 Page Ave.
 HENDERSON, Milton
 1325 Hayden Ave.
 HENNIE, Ralph
 14628 Savannah Ave.
 HODGES, Harold
 14208 Potomac Ave.
 HOFF, William
 12705 Phillips Ave.
 HORNUNG, Edwin
 1203 Carlyon Road
 HOWARD, Jessie Mae
 1722 Doan Ave.
 HUGO, Ray
 14802 Dover Ave.
 HUNTER, Helene
 14620 Orinoco Ave.
 HUNTER, Winifred
 882 Caledonia Ave.
 HUNTOON, Joyce
 1462 E. 134th St.
 IMMKE, Harry
 1212 Melbourne Road
 IVES, Alvah
 13849 Euclid Ave.
 JACOBS, Barbara
 991 Brunswick Road
 JARVIS, Leonard
 13409 Shaw Ave.
 KAUFMAN, Dianne
 1570 Belmar Road
 KEEFER, Bill
 14809 Ardenall Ave.
 KEIFFER, Frances
 929 Selwyn Road
 KEITH, Margaret
 1817 Noble Road
 KENNARD, Jeanne
 15324 Plymouth Place
 KENNEDY, Robert G.
 930 Helmsdale Road
 KING, Marilyn
 1696 E. 133rd St.
 KINKELAAR, Bob
 1265 E. 141st St.
 KLEIN, Aurelia
 1776 Carlyon Road
 KLEINSMITH, Mildred
 13820 Elm Ave.
 KNAEBEL, Doris
 1046 Greyton Road
 KNAPP, Eleanor
 14220 Ardenall Ave.
 KRALIK, Daniel
 15985 Nelamere Ave.
 KRUSER, Phyllis
 13406 Milan Ave.
 KUMHALL, Florence
 14202 Shaw Ave.
 LaFRANCE, Betty
 15632 Euclid Ave.
 LAMBERT, Virginia
 13136 Euclid Ave.
 LANGER, Frank
 1630 Elsinore Ave.
 LAWRENCE, Jack
 1065 Greyton Road
 LEAR, Rita
 15987 Nelamere

FLOWERS

Enchantingly Lovely Arrangements
Expressive of Your Personal
Thoughts



THE FINEST IN CUT FLOWERS
SMART IMPORTED POTTERY
STYLED TO THE MINUTE
CORSAGES
ORCHIDS . . GARDENIAS . . ROSES



EVANS FLOWERS
INC.

14136 Euclid Ave. LI. 8983-84-85

WILCOX

The School of TOMORROW

Wilcox College has the experience of yesterday . . . knows the needs of the business executive of today . . . and prepares you for the requirements of tomorrow.

Wilcox College trains their students with the latest types of modern equipment in each department, in order to help them gain their highest efficiency in the business world.

ENROLL NOW

- *Business Administration
- *Accounting
- *Bookkeeping
- *Secretarial
- *Comptometer
- *Shorthand
- *Typing
- *Office Training

Day and Evening Classes

FREE EMPLOYMENT

WILCOX

COLLEGE OF COMMERCE

R. N. Wilcox, President

Public Square Building MAIn 2425

FRIDAY, Jan. 19—Honor Day Assembly.

SATURDAY, Jan. 20—Senior Prom—Hal Lynn—
much Sadie Hawkinsing.

TUESDAY, Jan. 23—Class night.

FRIDAY, Jan. 26—Temporary relief from school—
end of semester.

SATURDAY, Feb. 3—Hockey team WINS!!!

FRIDAY, Feb. 16—Band concert.

WEDNESDAY, Feb. 21—Basketball team assures
Shaw of a tie at least for L. E. L. title by beat-
ing Heights 36-32.

Gordon Bicycle - Sales & Service

A Complete Line of Bicycles, Parts & Accessories

KEYS MADE LOCKS REPAIRED

Work Called For and Delivered

762 E. 105th St.

GLenville 5576

MUlberry 9573

"Road Service"

JOHNS SUPER SERVICE STATION

SOHIO GAS, OIL & LUBRICANTS

Battery Recharging, Tire Repairing

New Batteries and Tires

2139 Noble Road

KARL BROWN

PERSONAL SERVICE—COMPLETE FOOD STORE

Free Delivery
GLenville 5800

15520-15522 Euclid Ave. at Taylor Rd.

Free Delivery
GLenville 5800

LEES, Beverly
3394 Hartwood Ave.

LEIBY, Robert
920 Greyton Road

LEWAND, Adele
13507 Sixth Ave.

LOFTUS, Robert
1835 Stanwood Ave.

LONG, Ruby
935 Nela View Road

LOOMIS, Jean
14508 Terrace Road

LOWRY, Ka'harine
14026 Terrace Road

LOWRY, William
14026 Terrace Road

LUCAS, Robert
1025 Helmsdale Road

LYNCH, John
1829 Belmont Road

LYTTLE, Jack
14310 Bardwell Ave.

Mac DONALD, Charles
3378 Hartwood Road

McNAMEE, John
13517 Claibourne Road

MANN, Jack
1842 Marloes Ave.

MANNING, Nancy
Chesterland, Ohio

MARKELL, William
1862 Taylor Road

MARSHALL, Floyd J.
1717 Hartshorn Ave.

MARTIN, Vivian
1808 Stanwood Ave.

MARZI, Virginia
1873 Brightwood Road

MATTERN, Wesley
16318 Greyton Road

MAULORICO, Ann
1855 Woodlawn Ave.

MAYFIELD, James
15776 Euclid Ave.

McANDREWS, Marian
1119 Eddy Road

McCULLOUGH, Lois
883 Eloise Drive

McLEOD, Edward
15691 Brewster Road

McMILLEN, Dick
1735 Collamer Ave.

McMORROW, Vivian
13710 Milan Ave.

MEADE, Eugene
1777 Rosedale Ave.

MERRIAM, Elaine
1833 Roxford Road

MERRIELL, John
1854 Wymore Ave.

MESHENBERG, Martin
1792 Elberon Ave.

MEYER, Ted
14700 Dover Ave.

MIGGANTZ, Herbert
1746 Northfield Ave.

MILLER, Luther
1170 Carlyon Road

MILLS, June
1252 Melbourne Road

MOONEY, Dorothy
1722 Taylor Road

MORGAN, Robert
1173 Rozelle Ave.

MORGENSTERN, Carl
1037 Thornhill Drive

MORITZ, Faye
1093 Carlyon Road

MORTUS, Norma
3403 Hartwood Road

MOUGHTIN, Mona
855 Greyton Road

MURRAY, Bill
1860 Nela Ave.

NAROVEC, Jean
14612 Strathmore Ave.

NEWMAN, Eleanore
1299 Bender Ave.

NICOLOSI, Angela
1766 Lockwood Ave.

NORMILE, Jeanne
14104 Ardenall Ave.

NOSSE, Albert
9717 Lake Shore Blvd.

OLIVER, James
1733 Shaw Ave.

O'MALLEY, Ruth
13323 Emily Ave.

ONIONS, George
15526 Elderwood Ave.

O'RILEY, Eileen
1286 E. 141st St.

ORR, Mary
3000 Hadden Road

OSMON, Audrey
1732 Noble Road

OTTE, Donnel
949 Dresden Road

OWEN, Alice
1867 Noble Road

OZAN, Naomi
2820 Mayfield Road

PALMER, Jeanne
14513 Ardenall Ave.

PARK, Wendell
1750 Holyoke Ave.

PARKER, Eleanor
870 Nela View Road

PATERSON, Catherine
1770 Noble Road

PATON, Charles
10410 Brighton Road

PEEK, Marion
2160 Taylor Road

PERSING, Betty
3386 Winsford Road

PETERSON, Robert
14411 Potomac Ave.

PHILLIPS, John
15815 Hazel Road

PICKENS, Nancy
14616 Woodworth Road

PILMER, Irma
1842 Beersford Road

PLAISTED, Jack
3060 Monticello Blvd.

POTTER, Nelson
13401 Emily Ave.

PRETZLAV, Eisie
12814 Phillips Ave.

PRICE, Jeanne
1376 Hayden Ave.

PRIORESCHI, Romeo
1724 Doan Ave.

PROBECK, LaVerne
13621 Milan Ave.

RANDALL, Robert
1830 Hayden Ave.

REDDY, Mary
1854 Taylor Road

REDFIELD, Betty
14741 Euclid Ave.

REED, Geraldine
14613 Orinoco Ave.

REILLY, Francis
1783 Coit Road

RESS, Frances
1870 Beersford Road

REYNOLDS, Jack
1736 Hartshorn Road

RHODES, Ralph
1894 Wadena Ave.

RICE, Dick
13317 Garden Road

RIGGS, Helen
14009 Northfield Road

RIGOT, Jane
1881 Rosalind Ave.

ROBBINS, Doyle
13323 Emily Ave.

ROBERTSON, Archibald
14117 Strathmore Ave.

ROCHFORD, John
3369 Lowndale Road

RYKS, Don
1739 Page Ave.

SAMARTINI, Gloria
1752 Holyoke Ave.

SCAMINACE, Bill
1770 Lockwood Ave.

SCHLEIMMER, Joe
1779 E. 141st St.

SCHWAB, Edward
1651 Lockwood Ave.

SCHWALLER, Fred
13710 Mann Ave.

SCOTT, Donald
13425 Second Ave.

SEID, Adele
14090 Superior Road

SHOWALTER, Charles
3407 Henderson Road

SINGER, Edward
1466 Hayden Ave.

SISSON, Robert
831 Helmsdale Road

SMITH, Barbara
1708 Lakefront Ave.

SMITH, Gerald
1261 E. 145th St.

SMITH, Irving
866 Caledonia Ave.

SMITH, Jean Emily
1034 Nela View Drive

SNYDER, Jeannette
15208 Eiderwood Ave.

SOLT, Leonard
1207 Bender Ave.

SONDAY, Elmer
13512 Hartford Ave.

SPATIG, Ethel
14808 Elm Ave.

SQUIER, Joan
1826 Wellesley Ave.

STANDISH, Patricia
1725 Wymore Ave.

STEFARROY, Anne
1775 Eddy Road

STEINBACH, Doris
15924 Euclid Ave.

STERN, J. Eldon
1270 E. 141st St.

STOCKTON, Genevieve
10300 Burton Ave.

STOKES, Betty
1058 Greyton Road

STUTE, Mary
916 Nela View Road

SULLIVAN, Terrence
14121 Bardwell Ave.

SUTHERLAND, William
16302 Nela View Road

SUTTER, Katherine
13707 Sixth Ave.

SWANSON, Carol
1876 Windermere Ave.

SWANSON, Evelyn
14120 Northfield Ave.

SWISHER, Otis
1718 Lakefront Ave.

TABER, Bette
Wickliffe, Ohio

TANSLEY, Kaye
2129 N. Taylor Road

TAYLOR, Malcolm
1721 Eastham Ave.

THOMAS, Dave
14724 Strathmore Ave.

THOMAS, Eulala
1533 Bryn Mawr Ave.

THOMPSON, Ruth
1780 De'mont Road

TILLIE, Charles
1676 Hower Ave.

TINGE, Virginia
1885 Grasmere Ave.

TITMEYER, Mary
1851 Hastings Ave.

TODD, Frances
1747 Page Ave.

TREAT, Helen
12522 Lake Shore Blvd.

TRIVISONNO, Mike
1827 Penrose Ave.

UBERSTINE, Milford
1604 Eddington Road

USSNER, Helma
1382 Shawview Ave.

VERMILLION, Joe
969 Brunswick Road

VOLL, Clyde
1370 Elwood Road

WARD, Robert
1277 E. 142nd St.

WARMUTH, William
14002 Strathmore Ave.

WEAVER, George
1326 E. 142nd St.

WEBSTER, William
1083 Selwyn Road

WEIGLE, Keith
1873 Grasmere Ave.

WENDT, Virginia
1001 Selwyn Road

WESKE, William
1084 Greyton Road

WHITE, Mildred
14408 Elm Ave.

WHITE, Oliver
14159 Euclid Ave.

WILCOX, Russell
2030 Hayden Ave.

WILKA, Russell
13818 Woodworth Road

WILLIAMS, Eloise
1891 Roxbury Road

WILLIAMS, Harold
14304 Euclid Ave.

WILLIAMS, Ted
909 Selwyn Rd.

WINES, Norine
1855 Roxbury Road

WINGER, Louise
13308 Woodworth Road

WORKMAN, James
14406 Woodworth Road

YOUNG, Robert
1000 Nela View Road

YOUNG, William C.
1751 Page Ave.

ZINCK, Elva
14066 Dover Ave.

Our Cement Soles Have Proven To Be A Success
Try Them—Thank You

DE SALVO SHOE REPAIR

Hat Cleaning 15528 Euclid Avenue Shoe Repairing

For Better Home Appliances See

RADIO & ELECTRIC CO.

16375 EUCLID AVE., at IVANHOE RD.
GLenville 6856-7 J. T. Bernier, Prop.

GLenville 7410-7411

We Deliver

STONEBRAKER'S DRUG STORE

C. S. Stonebraker R. McBurney P. J. Mackey
Pharmacist Ice Cream Pharmacist

Compliments of

PATTERSON-SARGENT CO.

B. P. S. PAINTS

FRIDAY, Feb. 23—Shaw Basketball team wins Lake Erie League Title and permanent possession of the cup.

SATURDAY, March 9—Basketball team is defeated at Kent by Canton-Lehman. No Columbus—tough.

SATURDAY, March 16—Lake Erie League Music Festival—Hi-Y Dance.

TUESDAY, March 18—Army-Navy game—Middies win 33-30.

THURSDAY, March 21—"What A Life"

FRIDAY, March 22 to SUNDAY, March 31—
Vacation—Spring Fever.

Bye now—have to go to press.

We Train

Our Pupils for the Best Office Positions

All

Business Branches
Individual Instruction

**EAST CLEVELAND
SCHOOL of BUSINESS**

14065 EUCLID AVENUE
GLenville 8893

Mr. and Mrs. Thos. P. Scully

Day and Night Sessions All Year

- Stationery
- Engraving
- Office Supplies

**HOFFMAN-
CARLSON**

Printers

GLenville 0264

14066 Euclid Ave., East Cleveland, O.

Acknowledgment



The Editor wishes to thank all who helped
make this book a success.

Among these were:

THE JUDSON COMPANY - PRINTERS

THE NORTHERN ENGRAVING COMPANY

MUELLER ART COVER & BINDING CO.

Bill Lowry, Editor

